



# How to Fix Broken Porch Entry Stairs

How to fix broken porch entry stairs by replacing old or rotten treads and risers with new weather treated wood.

Written By: Kayla Unsworth



## INTRODUCTION

This guide will walk you through removing old or deteriorated treads and risers from a set of stairs. It will also teach you how to bring your stairs back to life by replacing them with new weather treated wood pieces. There are only 11 required steps to this guide which makes it not only cost effective but also time efficient. This fix will allow you to be a part of a community that fixes things instead of contributing to our throwaway economy and causing havoc on our environment. It is important to focus on safety throughout this fix because there will be power tools and manual labor involved.

---

### TOOLS:

- [Pry Bar](#) (1)
  - [Hammer](#) (1)
  - [Measuring Tape](#) (1)
  - [Circular Saw](#) (1)
  - [Ruler](#) (1)
  - [Pencil](#) (1)
  - [Level](#) (1)
  - [Cordless Drill](#) (1)
-

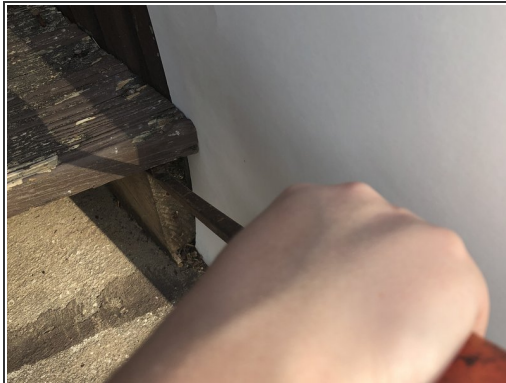
## Step 1 — Stair treads and risers



- Use a pry bar to remove the pre-existing damaged wood pieces.
- Start with the riser first.

⚠ Be mindful of possible rusted screws/nails.

## Step 2



- Use a pry bar to remove the pre-existing damaged wood pieces.
- Remove the treads on the stairs.

⚠ Be mindful of possible rusted screws/nails.

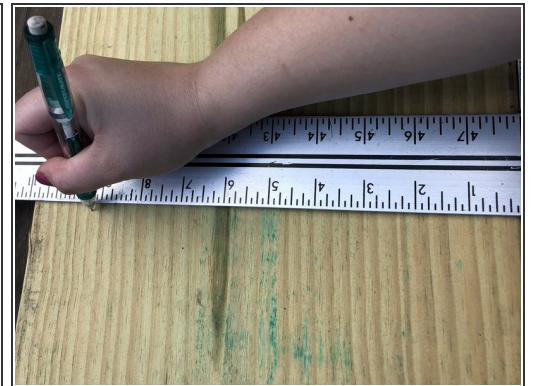
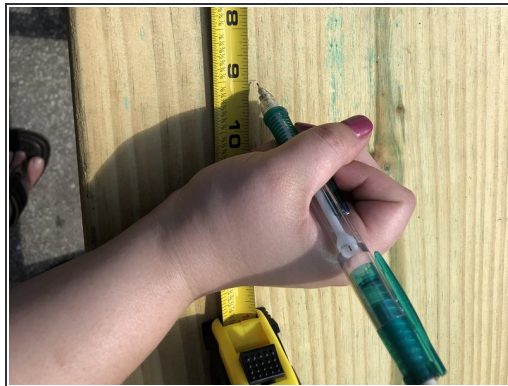


### Step 3



- Use a measuring tape to measure the foundation where the new steps will be placed.
- ⓘ To ensure accurate measurements, make sure to repeat this step twice.

### Step 4



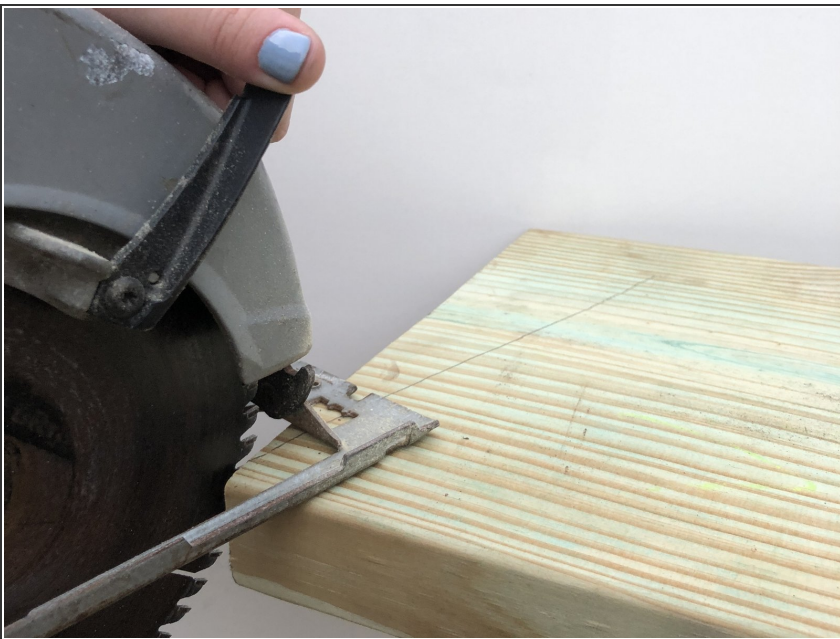
- Mark your measurements on both ends of your new weather treated wood using a measuring tape and a pencil.
- ⓘ For the best results, use a ruler to connect your marks into a straight line.

## Step 5



- Place the new piece of wood onto the end of a sturdy table.
- ⓘ Make sure the marked end is hanging off the edge by at least a foot.

## Step 6



- Use a circular saw to cut across the straight line marked on the new piece of wood.
  - ⓘ Make sure the wood is secure by holding the end resting on the table the entire time.
- ⚠ Safety glasses should be worn during this step.

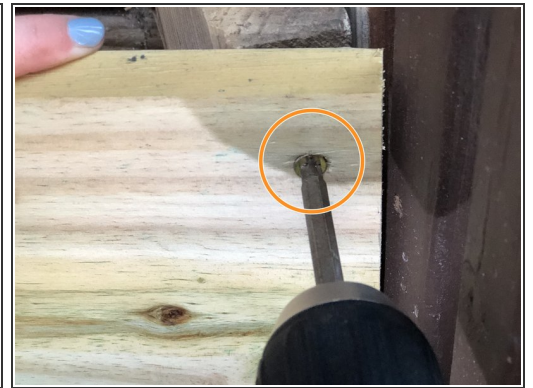
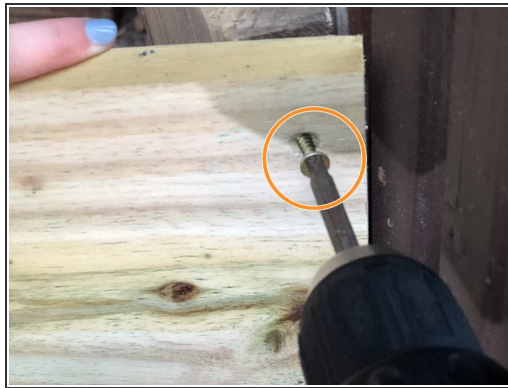


## Step 7



- Place the new piece of wood (riser) on the steps to ensure that it fits.
- Use a leveler to make sure that it is level.

## Step 8



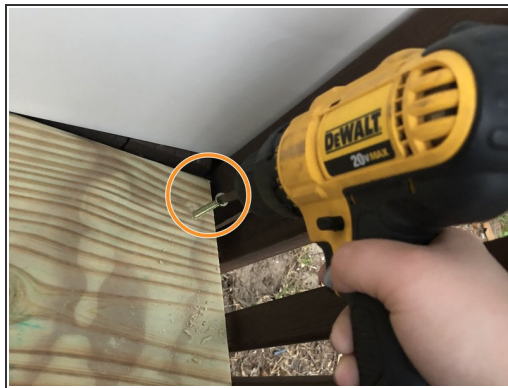
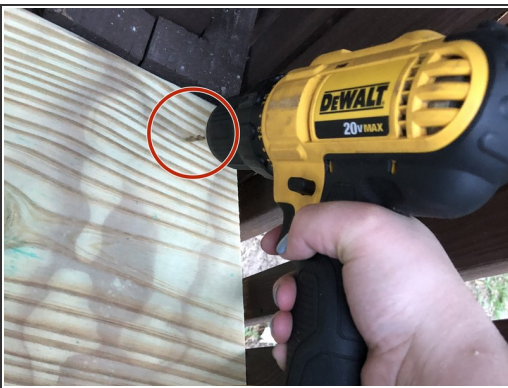
- Secure your wood piece (riser) into place using a drill and galvanized screws.
- Create two pilot holes with the correct drill bit.
- Secure the wood (riser) into place by drilling 2" galvanized Phillips head screws into the pilot holes.

## Step 9



- Make sure your wood piece (tread) fits into place and is level.
- ❗ For the most accurate results, it is important to use a large level.

## Step 10



- Secure your wood piece (tread) into place using a drill and galvanized screws.
- Create three pilot holes with the correct drill bit.
- Secure the wood (tread) into place by drilling 2" galvanized Phillips head screws into the pilot holes.



## Step 11



- Repeat steps 8-10 for the remaining stairs.
- ⓘ For the best results, follow this guide thoroughly for each stair.

To reassemble your old stairs, follow these instructions in reverse order.