



# Logitech G602 Side Motherboard Replacement

Open mouse and work with its top half. Use iFixit toolkits to remove the side motherboard of your Logitech G602 gaming mouse.

Written By: Matthew Ross



---

## INTRODUCTION

This guide will walk you through taking apart your Logitech G602 and replacing the side motherboard. You'll need a Phillips #00 screwdriver and a couple plastic opening tools to complete this guide.



### TOOLS:

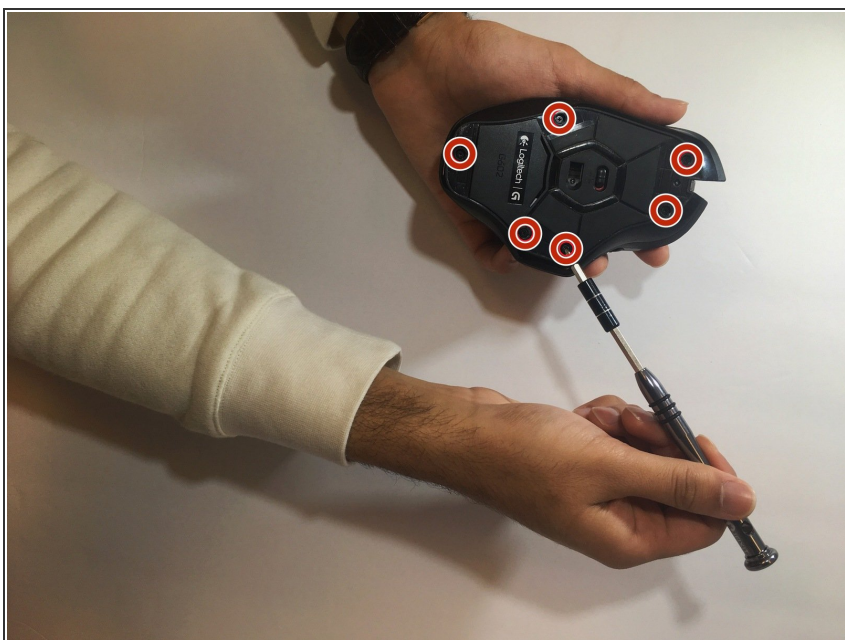
- [Spudger](#) (1)
  - [Phillips #00 Screwdriver](#) (1)
  - [iFixit Opening Tools](#) (1)
-

## Step 1 — Side Motherboard



- Use a blue spudger to pry all 4 mice feet from the bottom of the mouse.

## Step 2



- Use a Phillips #00 screwdriver to unscrew all 6 screws (3x5mm) from underneath the mice feet.



### Step 3



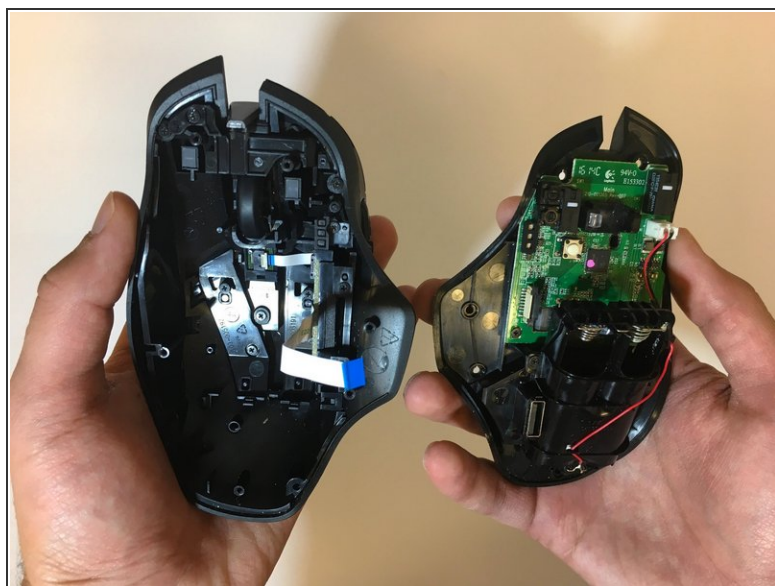
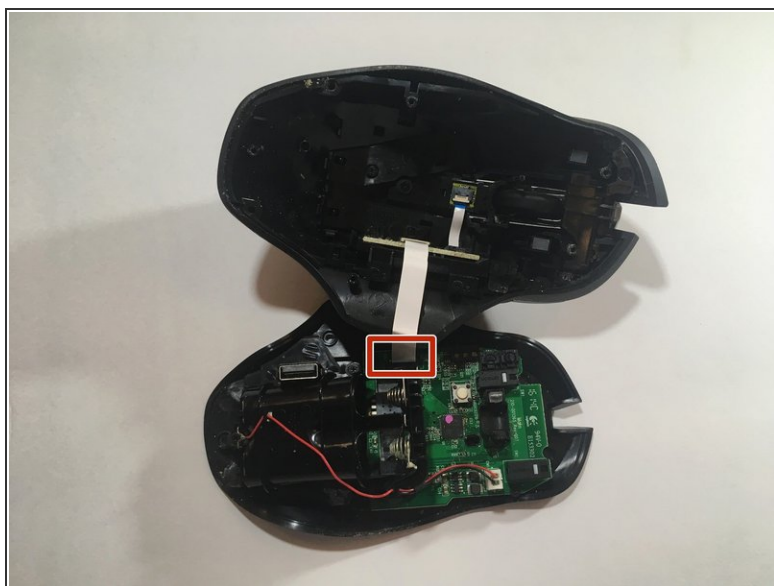
- Use the blue spudger to prop open the bottom battery port.
- Remove the AA batteries.

### Step 4



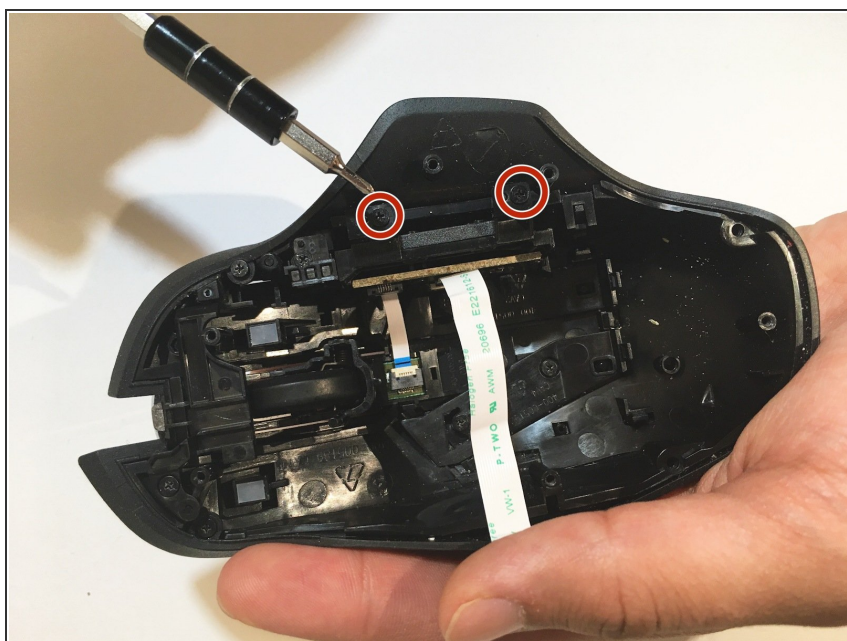
- Lift the top of the mouse from the base of the mouse (separate the mouse in half) to expose the internal hardware.

## Step 5



- Use tweezers to grip and pull the white ribbon cable from the motherboard.

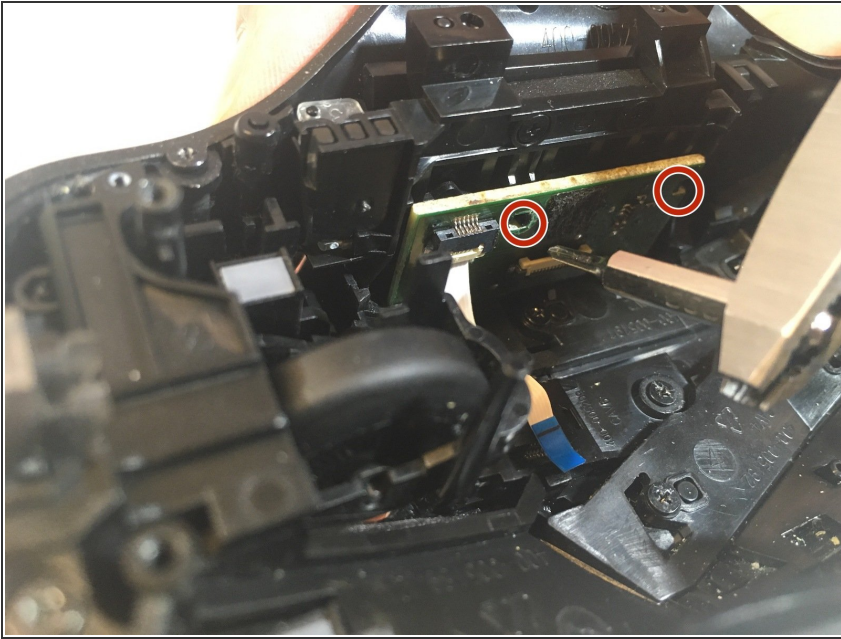
## Step 6



- Use a Phillips #00 screwdriver to remove both screws (3x5mm ) from above the side motherboard.

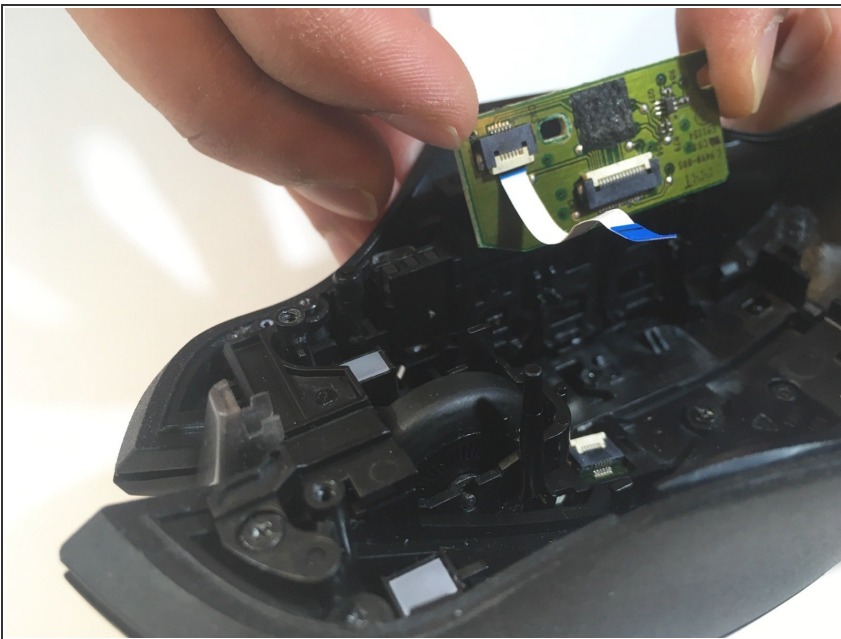


## Step 7



- Use a Phillips #00 screwdriver and unscrew both screws from the side motherboard.
- ⓘ We used a set of pliers and a Phillips #00 screw bit because the screwdriver couldn't fit into the side of the device.

## Step 8



- Use a black spudger and your fingers to loosen and remove the side motherboard.

To reassemble your device, follow these instructions in reverse order.