



Lenovo Thinkpad E540 WiFi Card Replacement

A guide on how to replace the wifi card on a Lenovo ThinkPad E540 laptop.

Written By: Timothy Sumner



INTRODUCTION

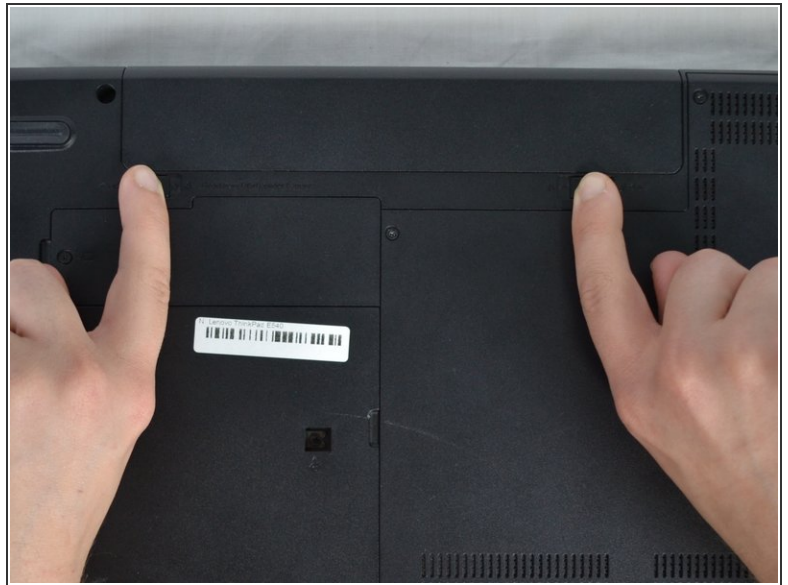
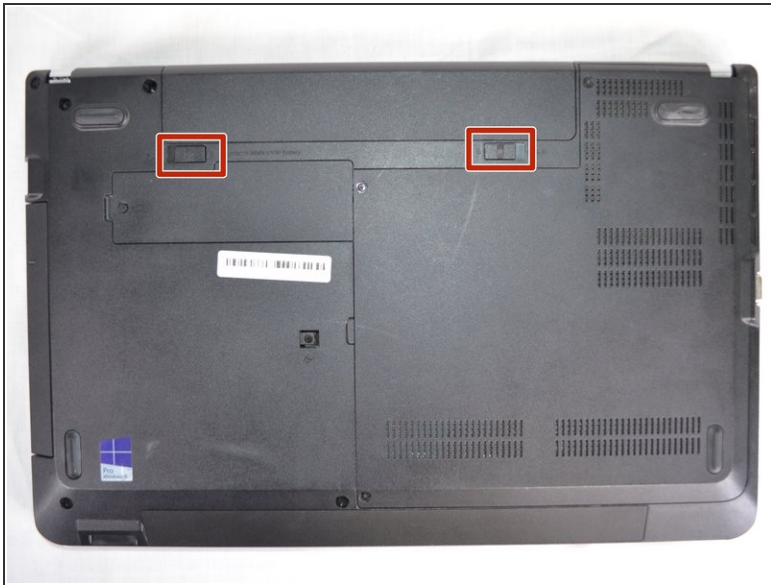
Are you experiencing difficulty connecting to the internet? Try replacing your WiFi card. This guide can help.



TOOLS:

- [Phillips #00 Screwdriver](#) (1)
 - [iFixit Opening Tools](#) (1)
-

Step 1 — Battery



- Push the battery release switches away from each other.

Step 2



- Remove the battery.

Step 3 — WiFi Card



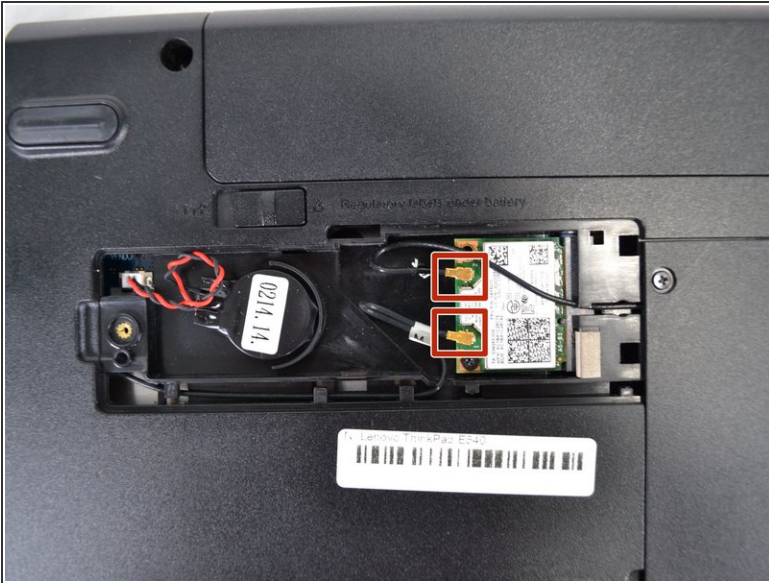
- Remove the single 1mm Phillips #0 screw holding the small plastic panel in place.

Step 4



- Use a plastic opening tool to remove panel.

Step 5



- Disconnect the two antenna cables from the wifi card.
- Remove the single 1mm Phillips #0 screw from the wifi card.

Step 6



- Remove the wifi card by sliding it out.

To reassemble your device, follow these instructions in reverse order.