



HP Spectre 13 4003dx x360 Battery Replacement

This guide will show you how to effectively and safely remove and replace your old and non-functional battery with a new one.

Written By: Alie Antar



INTRODUCTION

This guide will give you step-by-step instructions on how to remove your battery. Make sure you have a clean, dry, uncluttered, and roomy work space that has good lighting before you start. Also, make sure that your battery actually needs to be replaced by consulting our [troubleshooting guide](#).



TOOLS:

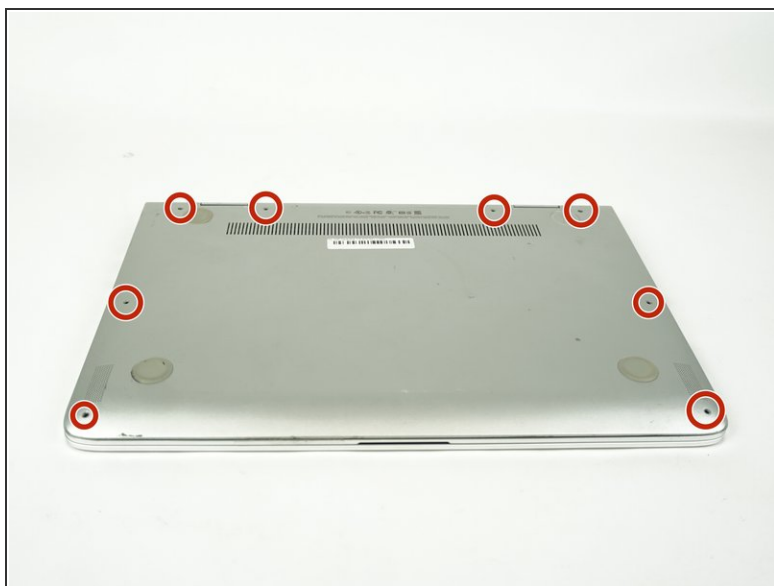
- [Anti-Static Wrist Strap](#) (1)
- [Phillips #00 Screwdriver](#) (1)
- [Magnetic Project Mat](#) (1)
- [T5 Torx Screwdriver](#) (1)



PARTS:

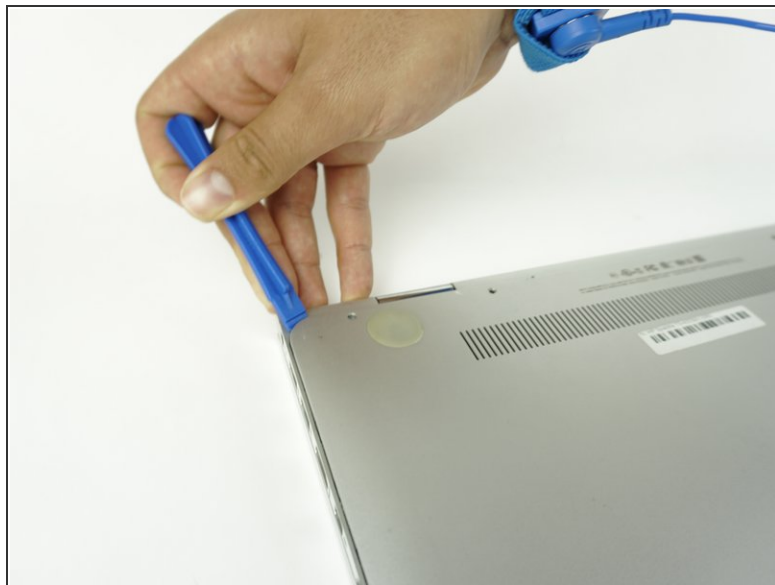
- [HP Spectre x360 13 Replacement Battery](#) (1)

Step 1 — Battery



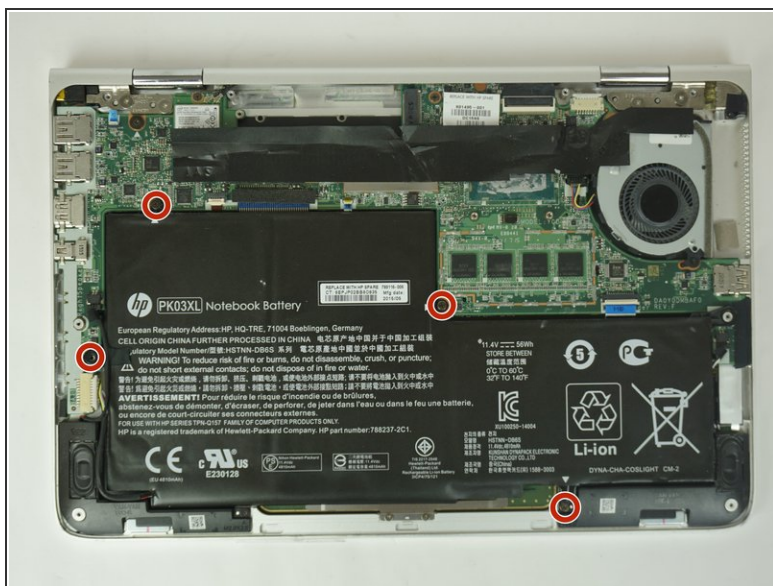
- i Before you begin, be sure to turn off your laptop and discharge the battery down to 25%.
- Turn the computer upside down.
- Use the T5 Torx Screwdriver to remove the eight 3.3 mm screws.
- i Make sure to use the [magnetic project mat](#) to help you keep track of the small screws.

Step 2



- Use an opening tool to pry up and loosen the back case from the laptop.
 - ⚠ If the back case doesn't loosen easily, there may be screws hidden underneath the rubber feet. Carefully pry a foot up and remove any hidden screws.
- Remove the back case.

Step 3



- Remove the four 2mm Phillips #00 screws securing the battery.
- ⓘ The screw locations are marked by small white arrows on the battery.

Step 4



- Peel off the adhesive on the left side of the battery holding the speaker wire down.
- Move the battery slightly to gain access to the battery plug, located on the left edge of the battery.
- Carefully unplug the battery by pulling the connector towards the battery.
⚠ Pull parallel to the battery, not straight up.
- Remove the battery.
i It is normal for your battery to flex and bend a bit where the wider section meets the narrower section.

To reassemble your device, follow these instructions in reverse order.

For optimal performance, after completing this guide, [calibrate](#) your newly installed battery.

Take your e-waste to an [R2 or e-Stewards certified recycler](#).

Repair didn't go as planned? Try some [basic troubleshooting](#), or ask our [Answers community](#) for help.