



# Home Essentials Sandwich Press Teardown

Break down the Home Essentials Sandwich Press into its components.

Written By: Anna Stapor



## INTRODUCTION

This product teardown will require pliers, a Phillips head screwdriver, a Y-head screwdriver, and a flathead screwdriver. Certain components will require some prying, so be prepared. You will also need some grip paste available, as some screws are placed very tightly in their spots.




### TOOLS:

- [Phillips #1 Screwdriver](#) (1)
  - [Tri-point Y0 Screwdriver](#) (1)
  - [Slip Joint Pliers](#) (1)
-

## Step 1 — Home Essentials Sandwich Press Teardown



- Unscrew the 10mm screws securing the plastic handle cover using a size PH1 screwdriver.

 These screws are very loose and easy to remove.

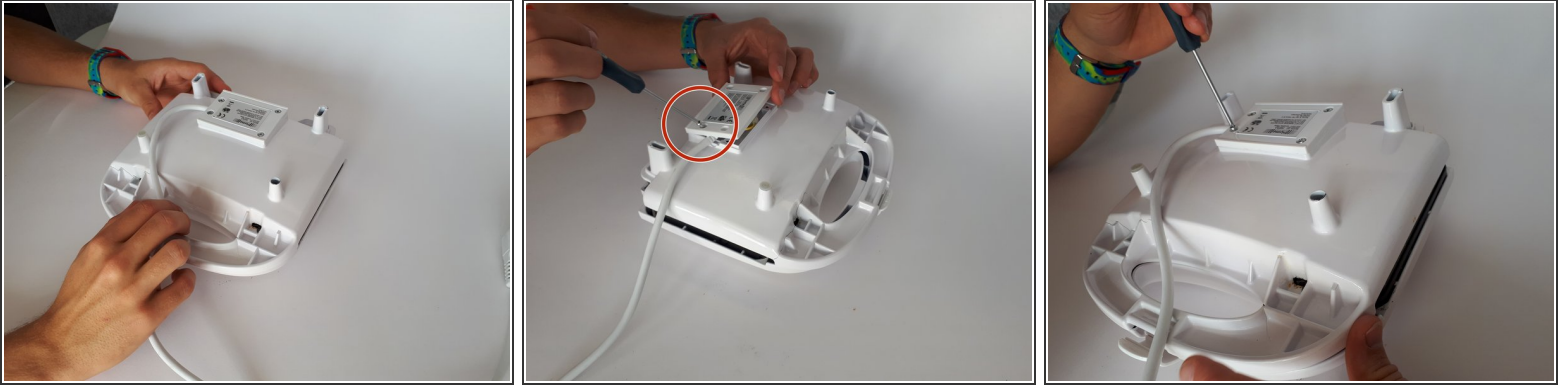
## Step 2



- Unscrew the metal hot plates from the plastic covering using a size PH1 screwdriver.
- The screws are 12 mm long.

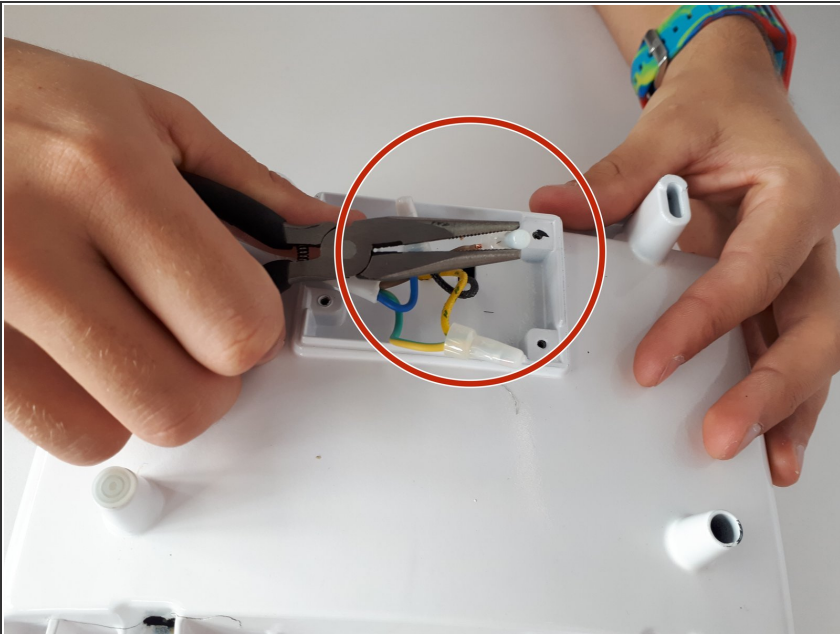


### Step 3



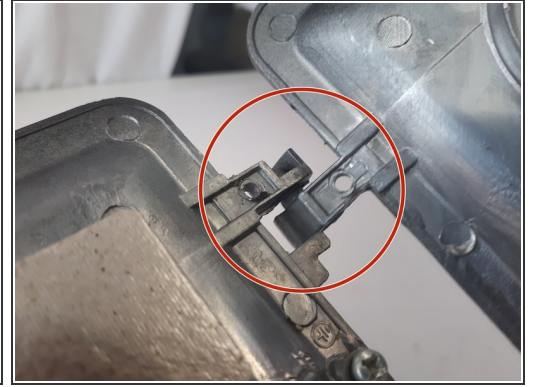
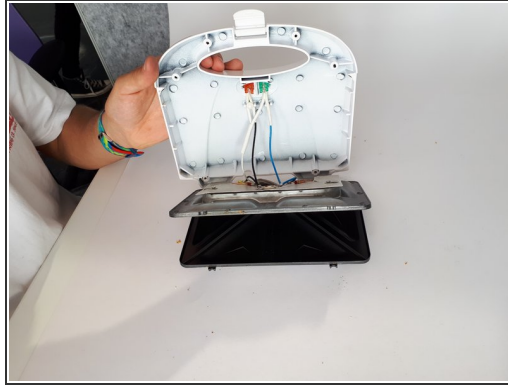
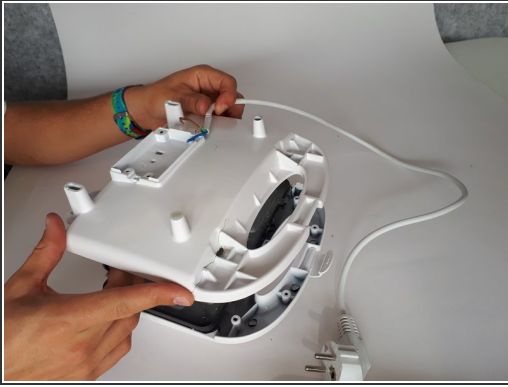
- Unscrew the plastic handle cover using a Special Key Tri-wing.
- ⓘ One screw was very hard to unscrew, so grip paste had to be used.
- The screws are 9 mm long.

### Step 4



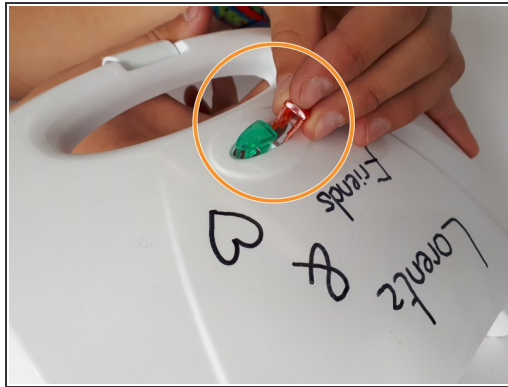
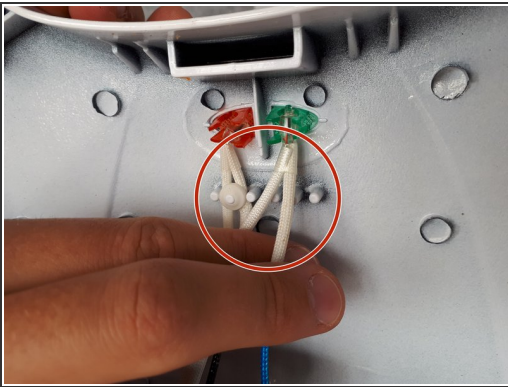
- Remove the plug-in cord caps using a pair of pliers.
- ⓘ The metal caps have to be bent a bit to remove the plug-in cord caps, which means the metal caps will not work anymore.

## Step 5



- Now the metal plates are loose from the plastic cover. The plates need to be moved until the end of their hinge slots to slide them apart.
- The hinges are very easy to take apart, once it is loose from the plastic cover.

## Step 6



- Separate the snap fit and remove the light covers.
- Remove the cords of the lights by pulling them out of their snap fit.
- Remove the light covers by pushing them out of the plastic cover.
- The lights are being taken out very easily with not much pressure.

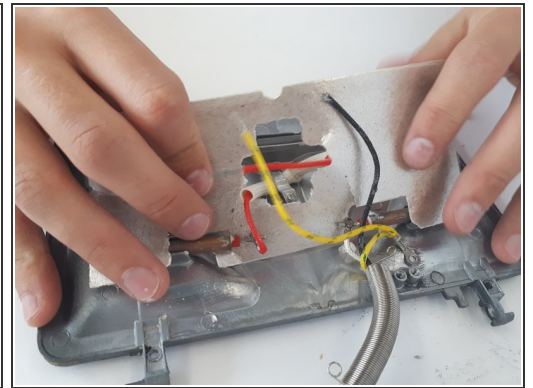
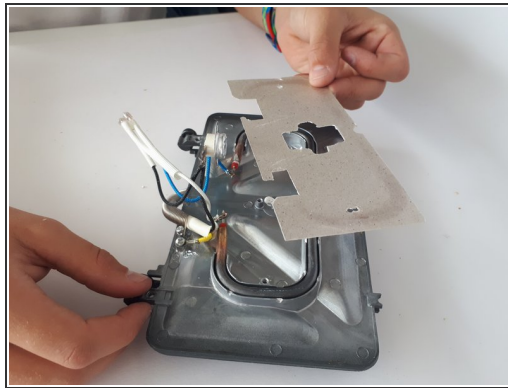
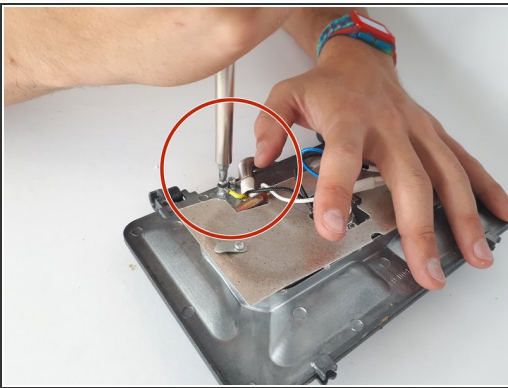
## Step 7



- Remove the press latch by using a screwdriver; add some pressure to it to get the latch loose.

**i** Removing the press latch is hard and requires extra effort.

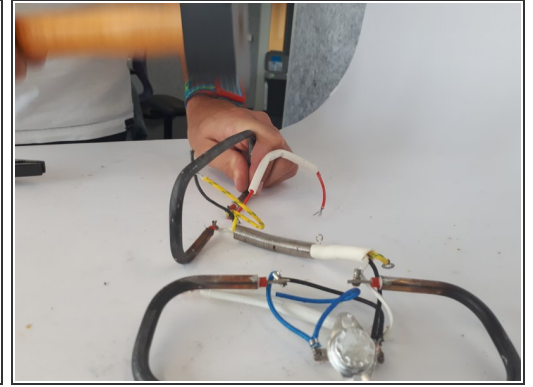
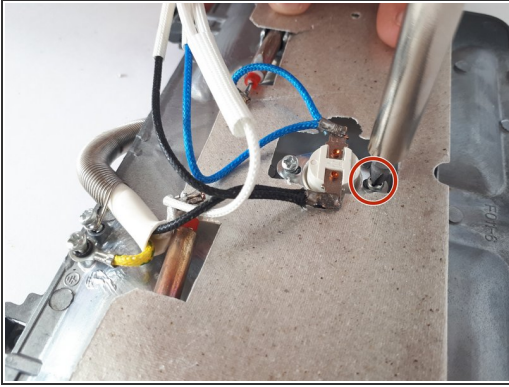
## Step 8



- Unscrew the heating element covers using a size PH1 screwdriver.
- Remove the heating element covers from the plates.
- i** These screws are very loose and easy to remove
- The screws are 5 mm long.



## Step 9



- Unscrew the heating element wires from the hot plates using a PH1 screwdriver. The screws are 5 mm long.
- Remove the heating elements using a Phillips head screwdriver, and put this screwdriver under the heating elements.
- ⓘ Removing the heating elements requires some more pressure because they are put in with a tight snap fit. The heating element will also deform when removed.