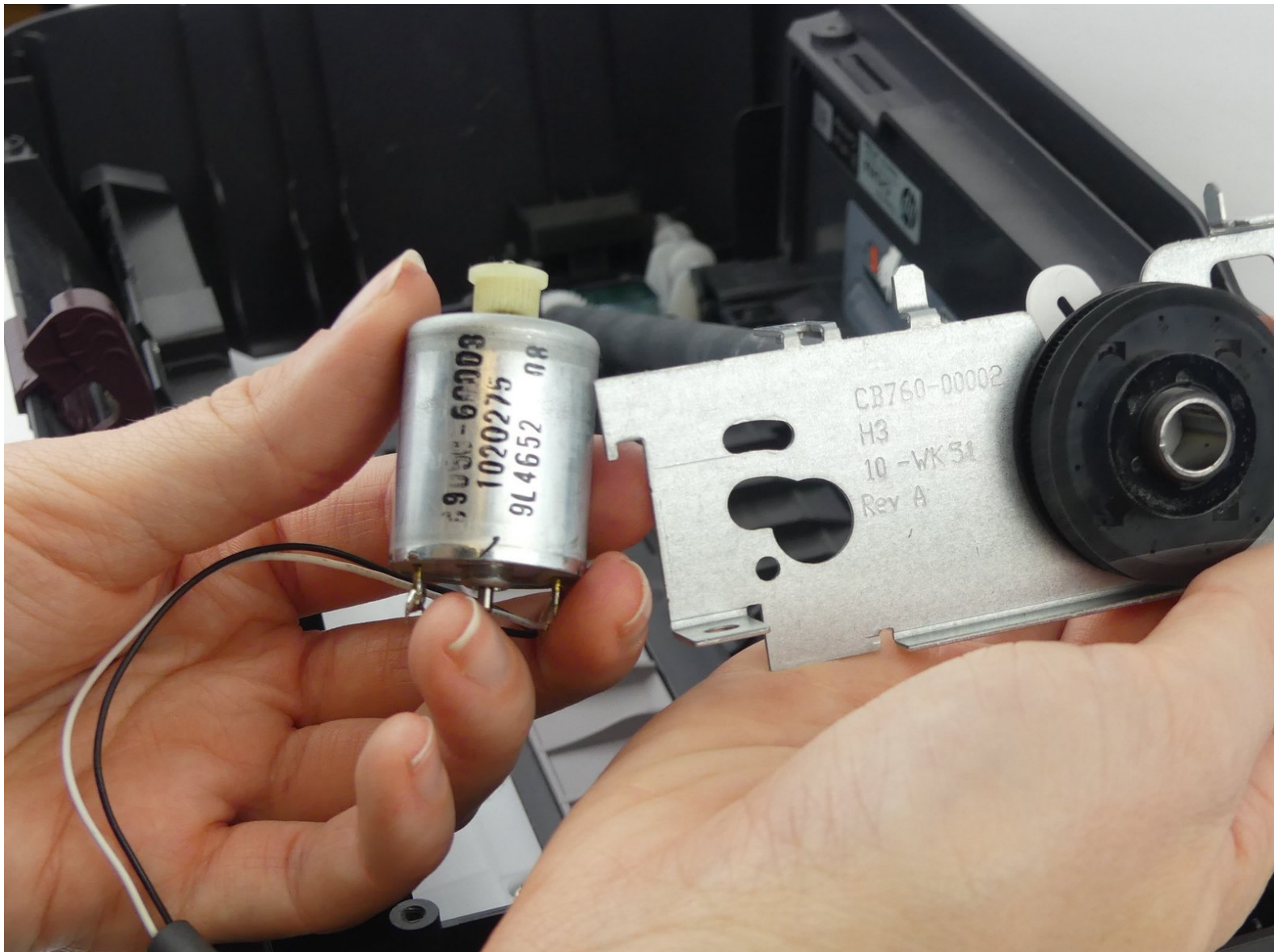




HP Deskjet 1000 J110a Paper Roller Motor Replacement

How to replace the Paper Roller Motor on an HP Deskjet 1000 printer.

Written By: Colin Tourjee



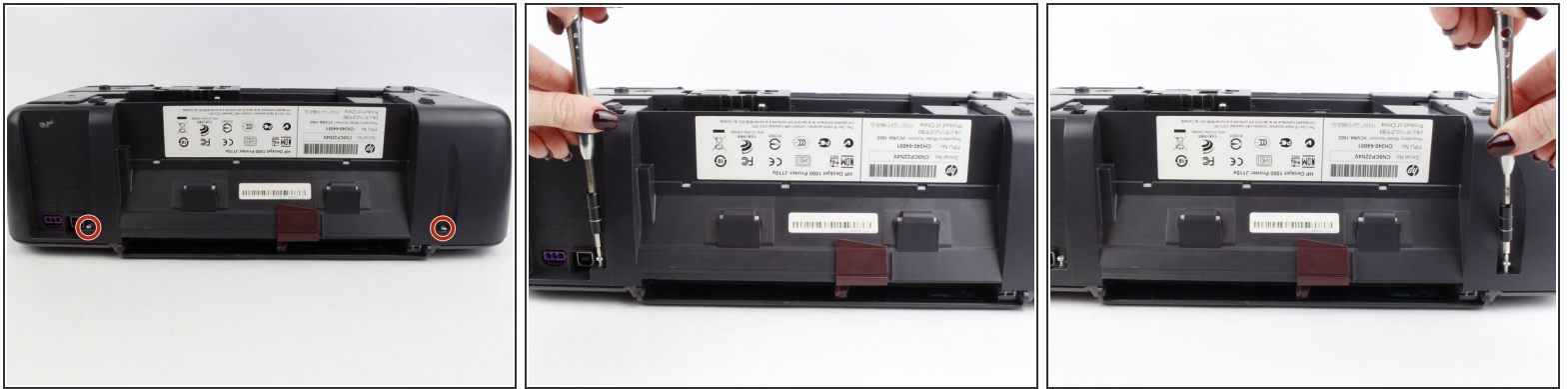
INTRODUCTION

When no paper is being dispensed from your printer, it is enough to drive you mad. If this is driving you mad, the Paper Roller Motor may not be driving anything at all. Save the stress and follow this guide to replace the Paper Roller Motor.

TOOLS:

- [T10 Torx Screwdriver](#) (1)
 - [Tweezers](#) (1)
-

Step 1 — Cover Removal



- Remove the two 13 mm screws located on the back of the printer using a screwdriver with the T10 torx bit (star-shaped).

Step 2



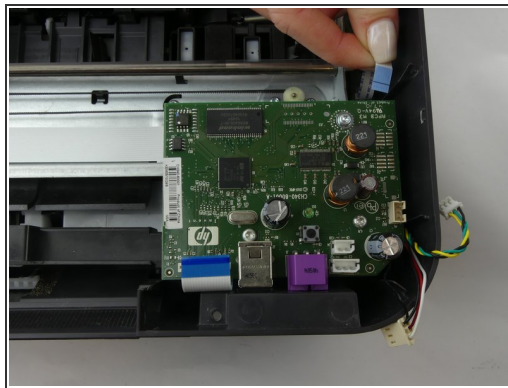
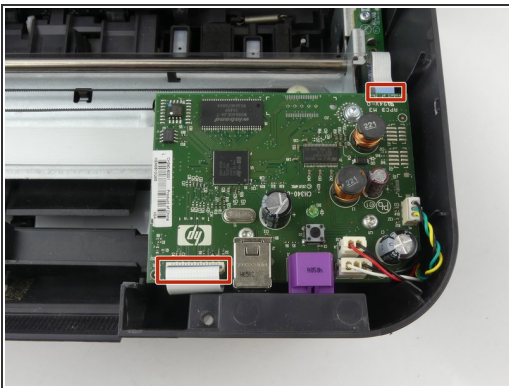
- In the front of the printer, open the tray where the paper comes out and remove the two 13 mm screws located under the top of the printer.

Step 3



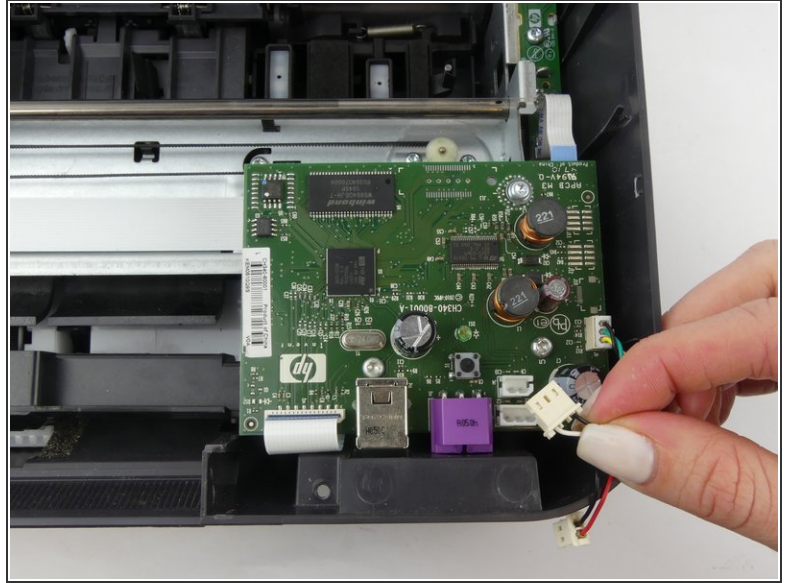
- With the front of the printer facing you, lift and raise the left side of the panel (like opening a book in reverse) until it disconnects from the clip on the right side of the panel.

Step 4 — Plug Ports



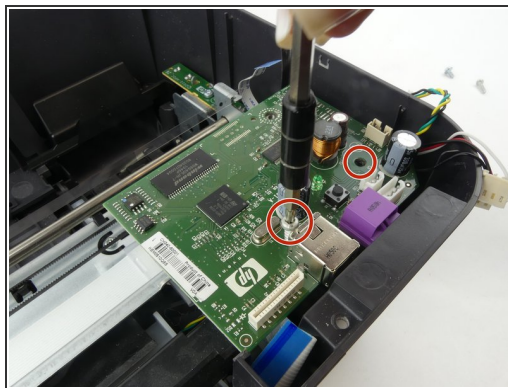
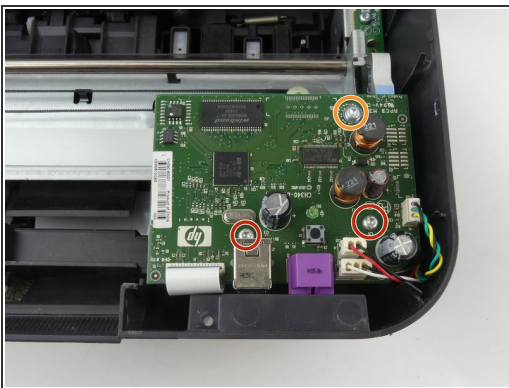
- Locate and remove the two flat ribbon connectors which connect the circuit board to the other printer components.
- ❗ Remove each connector using tweezers if it is too difficult to remove them by hand.

Step 5



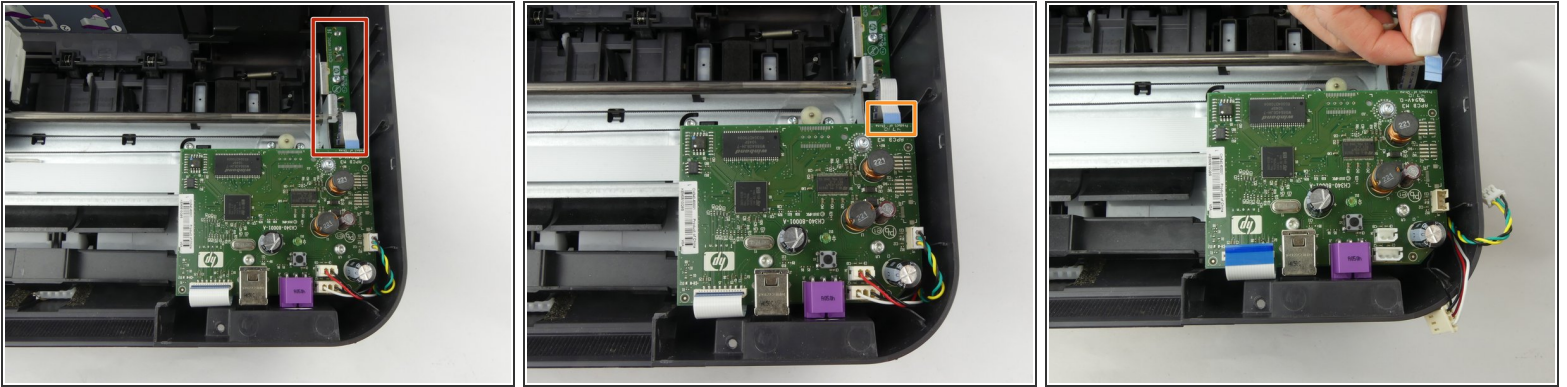
- Locate and remove the three multicolored wire connectors which connect the circuit board to the other printer components.
- ⓘ Remove each connector by hand, as shown. You can use tweezers if it is too difficult to remove them by hand.

Step 6



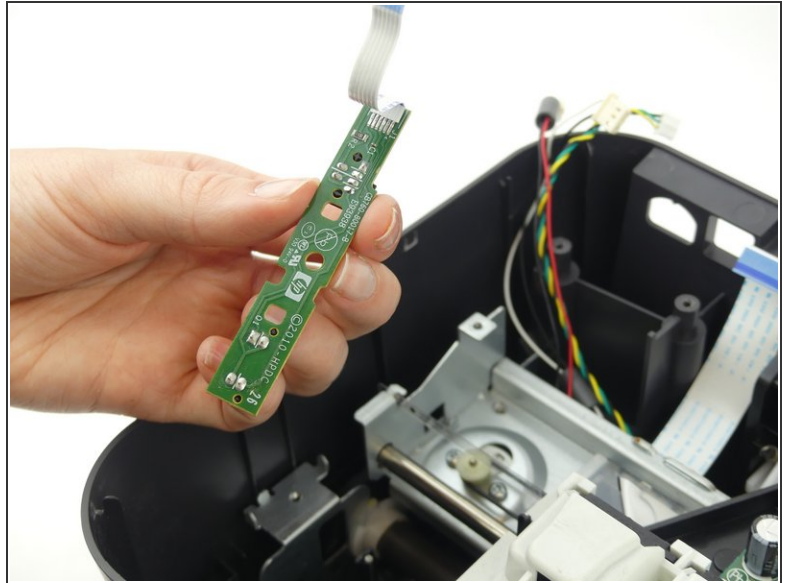
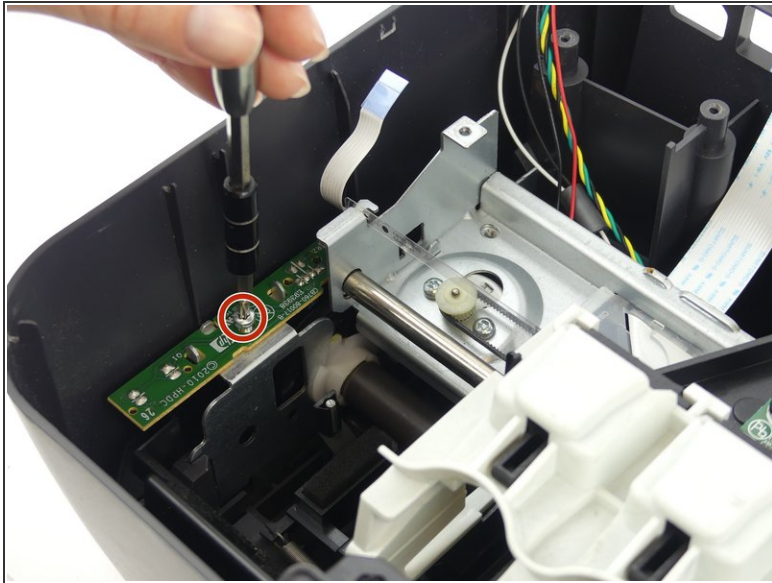
- Remove the top two 13mm screws using a screwdriver with the T10 torx bit.
- Remove the bottom 9mm screw using a screwdriver with the T10 torx bit, and remove the plug port circuit board.

Step 7 — Paper Control Sensor



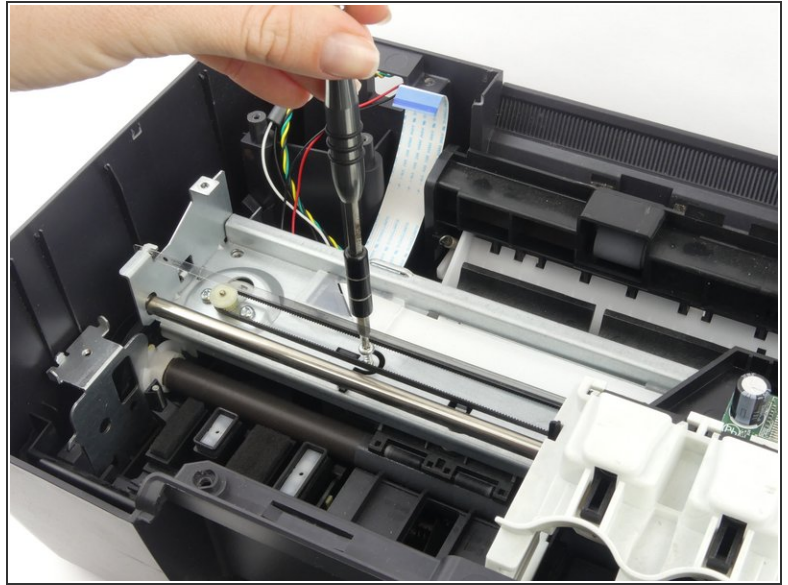
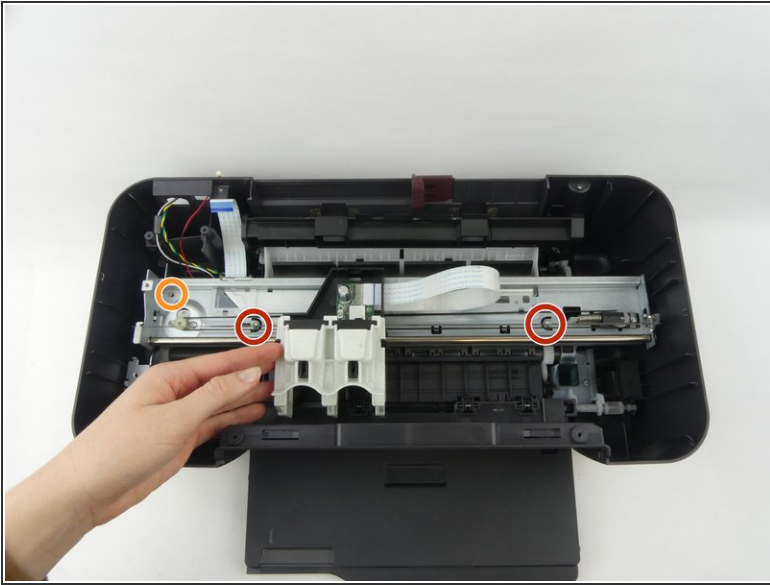
- Locate the paper control sensor.
 - ❗ You can find the sensor, with the back of the printer facing you, on the right, and in front of the main circuit board. The paper control sensor will also be attached to a small circuit board. You will be replacing this circuit board.
- Locate and unplug the connector which connects the sensor board to the main circuit board.
 - ❗ Use tweezers if unplugging by hand is too difficult.

Step 8



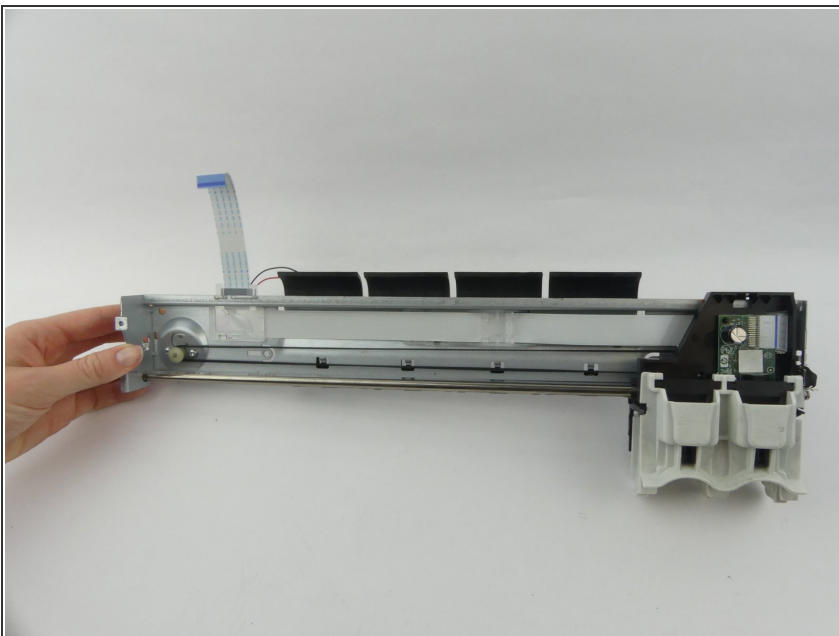
- Locate and remove the 8mm screw with a screwdriver and the T10 torx bit, then remove the paper control sensor board.
- ⓘ In this picture, the main circuit board is removed. It is not necessary to remove the main circuit board unless the paper control sensor is not the only part being replaced.

Step 9 — Ink Carriage Motor



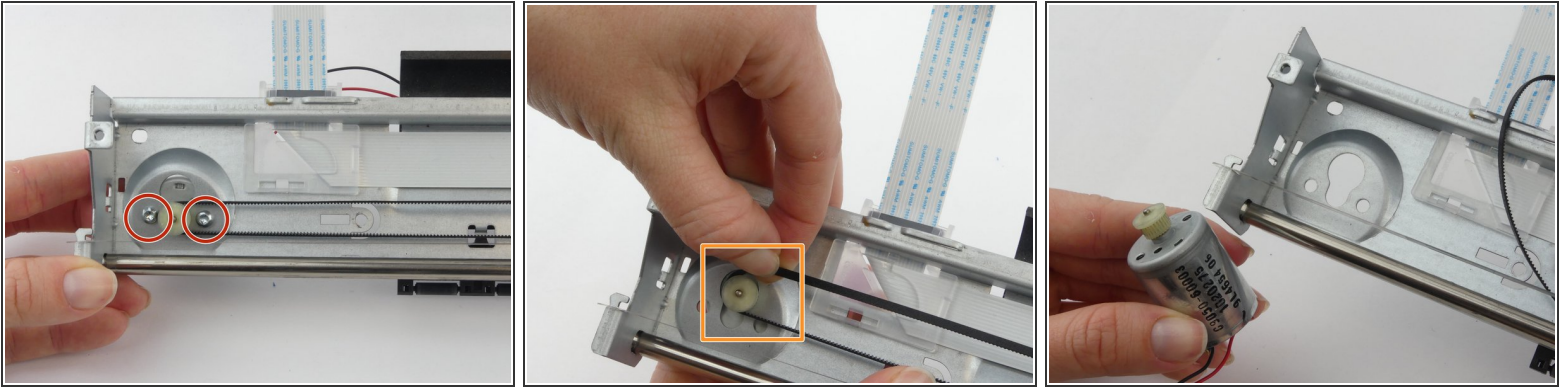
- Remove the two 13mm screws with the screwdriver and a T10 torx bit.
- ⓘ Slide the ink dispenser to the center in order to reach the screws.
- Remove the one 9mm screw with the screwdriver and a T10 torx bit.

Step 10



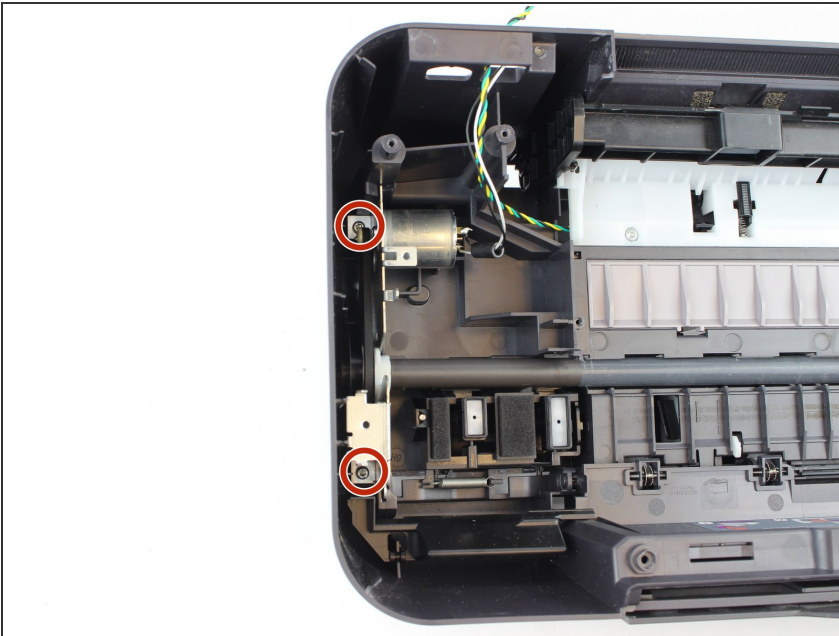
- Lift the entire ink dispenser assembly out of the printer.
- ⓘ Ignore the following step if you are replacing the paper roller motor instead of the ink carriage motor.

Step 11



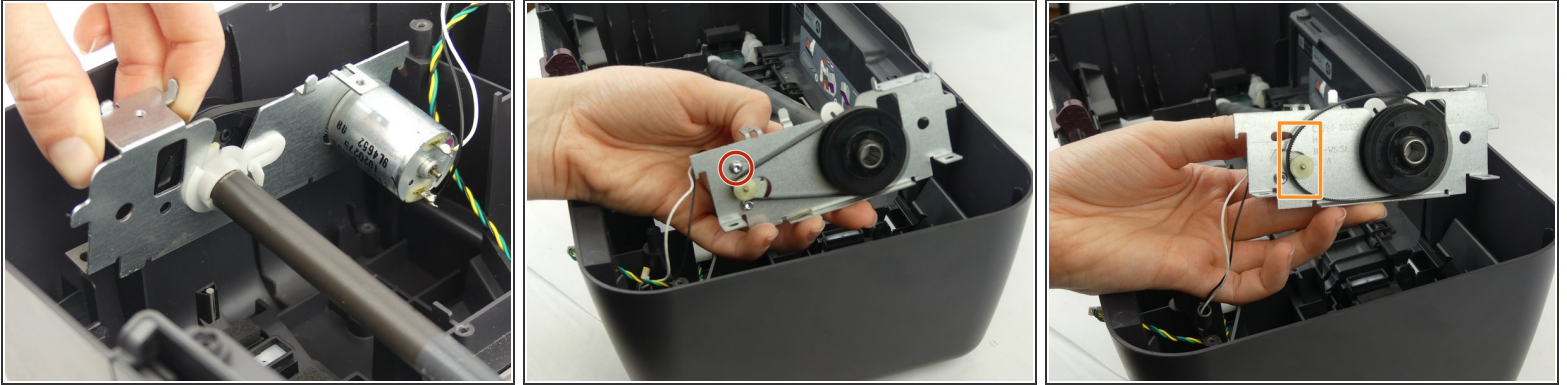
- Remove the two 5mm screws which hold motor in place.
- Remove the belt from the round motor gear, then remove the ink carriage motor.
- ⚠ Be careful not to allow pulley on right side of belt to fall out and become lost. It will remain in place if the assembly is handled gently.
- ⓘ Ignore these instructions if you are replacing the paper roller motor instead of the ink carriage motor.

Step 12 — Paper Roller Motor



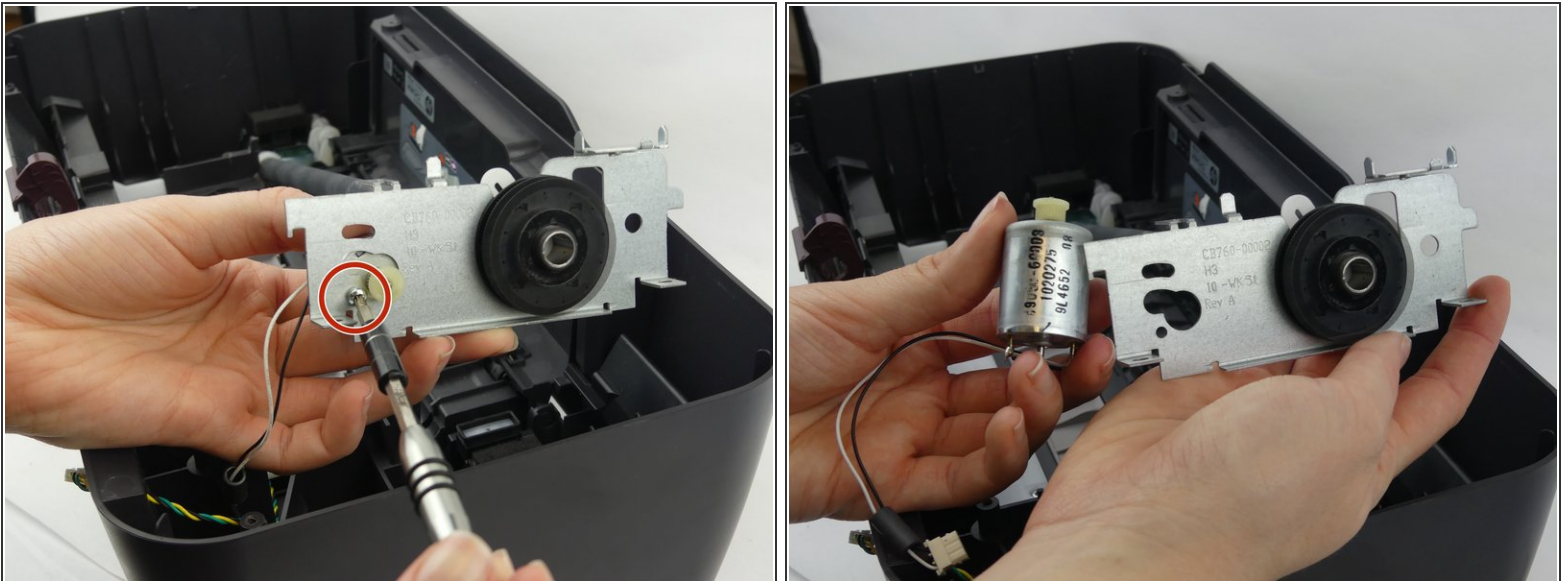
- Remove the two 13mm screws which hold the paper roller motor frame in place.

Step 13



- Lift the roller arm and motor frame out enough to reach the belt and motor screws.
- Unscrew the upper 4 mm screw which holds the motor in the metal frame. This allows the motor to slide enough to loosen the belt.
- Remove the belt from the motor gear.

Step 14



- Remove the remaining 4mm screw from the motor, then take the motor out.

To reassemble your device, follow these instructions in reverse order.