



Protocol Kaptur GPS Battery Replacement

How to replace the battery of the Protocol Kaptur GPS drone.

Written By: Connor Woitte



INTRODUCTION

This guide will show where to find the battery and how to replace it. If the drone does not have power or the battery is damaged, use this guide to help you.



TOOLS:

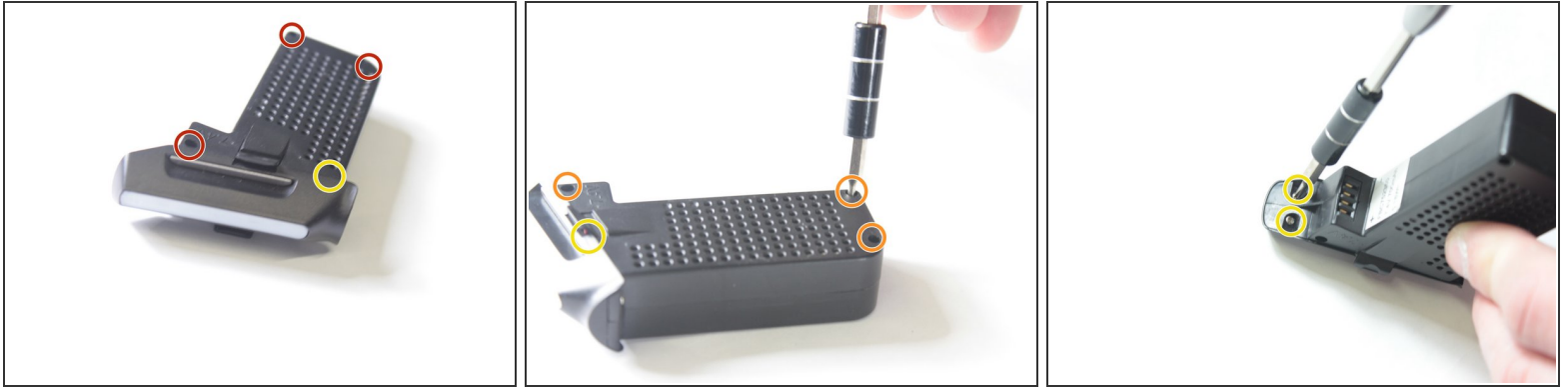
- [iFixit Opening Tools](#) (1)
 - [Phillips #000 Screwdriver](#) (1)
-

Step 1 — Battery



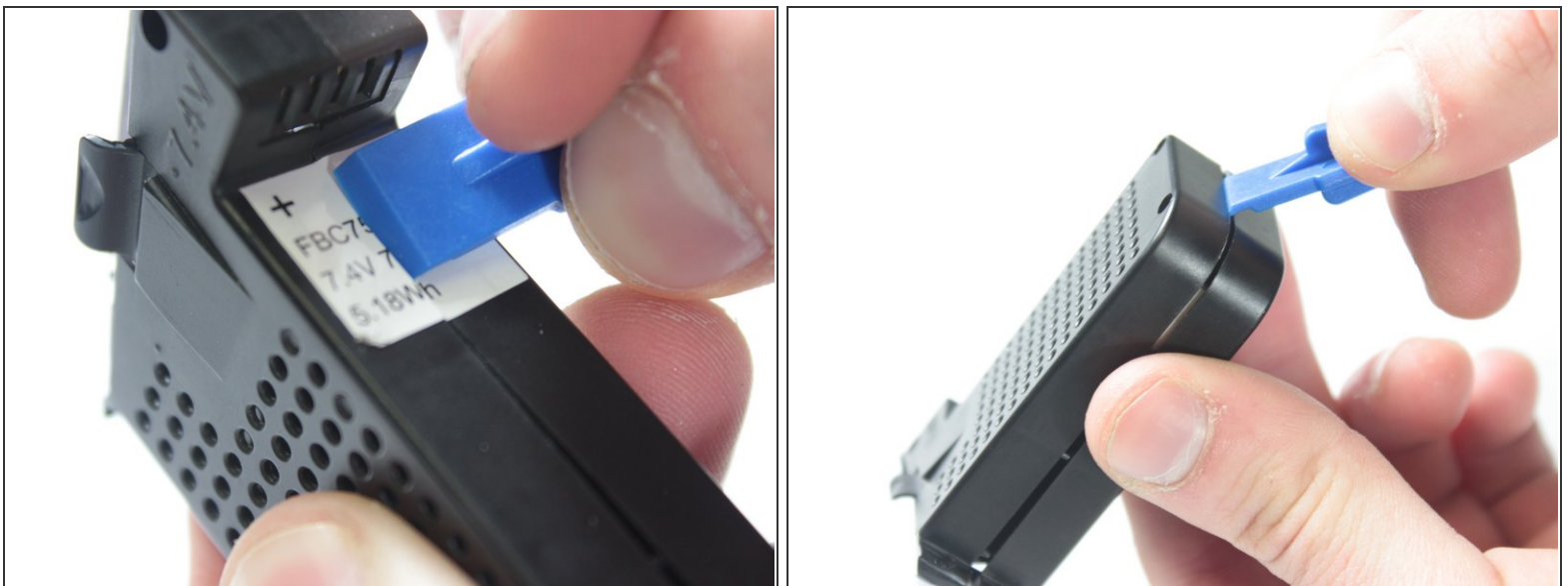
- The battery is accessible through the back of the drone.
- Press the tabs on both sides of the white stripe to pull the battery out.

Step 2



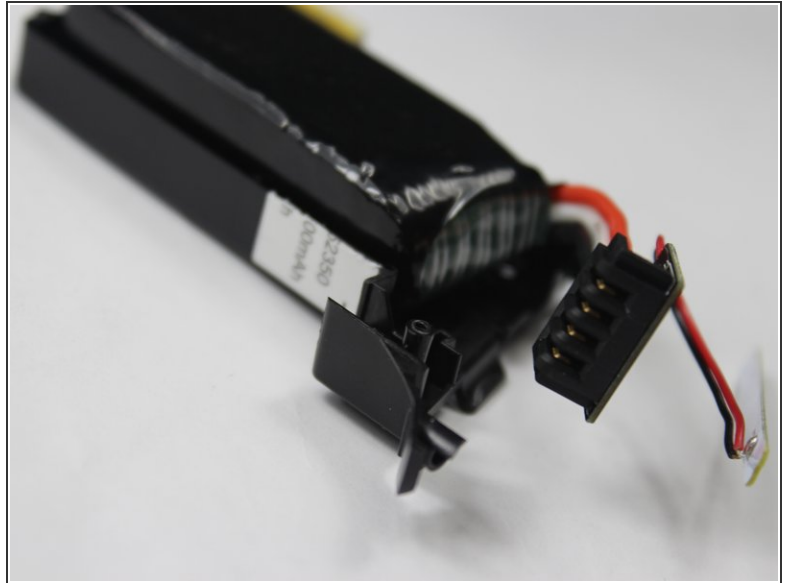
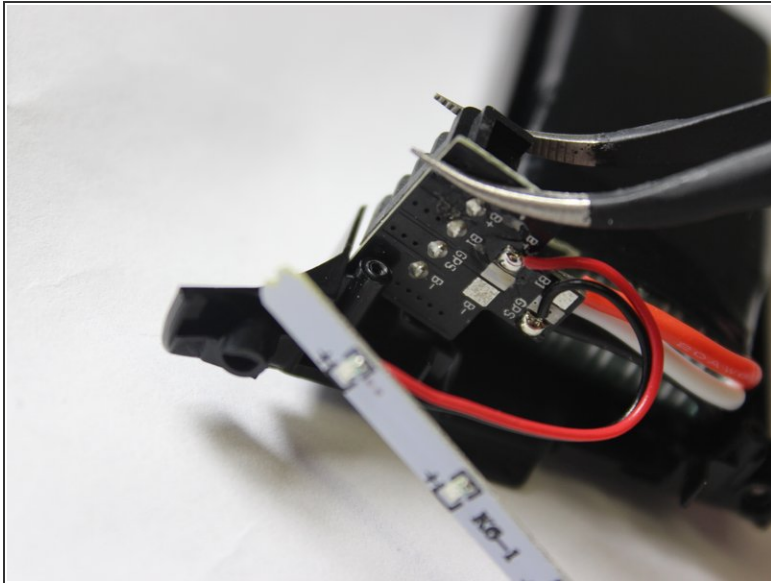
- Remove the screws starting with the three smaller ones on the top part of the battery.
 - Remove the three screws on the other side.
 - There are two screws tucked under where the yellow circle is located. You will need to remove the other screws first before you get to these two.
- i** There should be one 7 mm Phillips head screw, three 6 mm Phillips head screws, and four 5 mm Phillips head screws.

Step 3



- Remove the top piece, and gently pry the two halves apart. Divide the sticker if necessary.

Step 4



- The battery is now removable from its container.
- ☑ During reassembly, make sure the outlet is returned to its holder and faces the correct direction.

To reassemble your device, follow these instructions in reverse order.