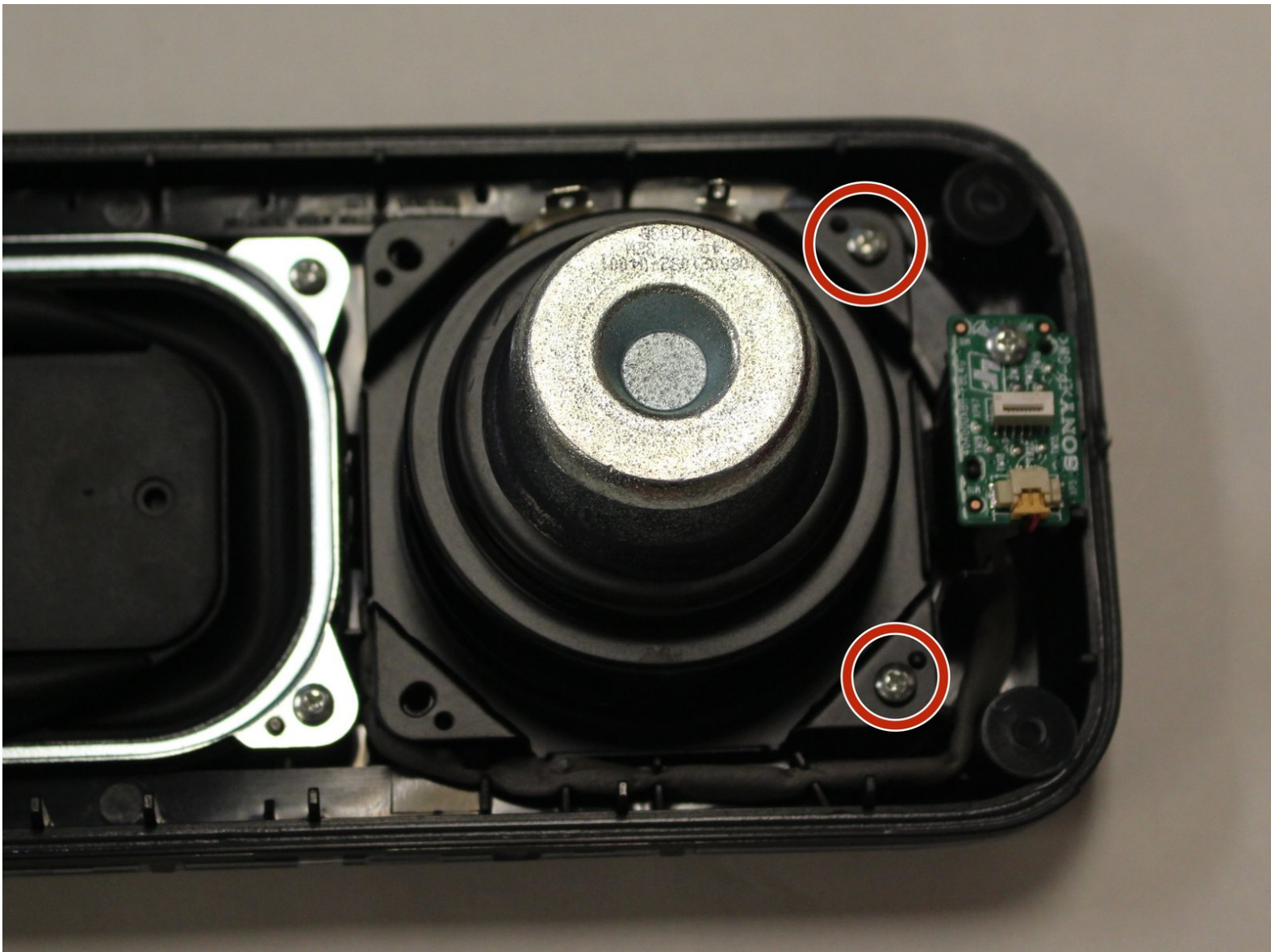




Sony SRS-XB40 Speaker Replacement

Removing and replacing a bad or broken speaker from the speaker housing.

Written By: Zack Coker



INTRODUCTION

In this guide, you will learn how to disassemble the speaker housing first, and then how to replace the actual speaker itself. This is a quick and easy replacement guide.



TOOLS:

- [T8 Torx Screwdriver](#) (1)
- [Metal Spudger](#) (1)
- [64 Bit Driver Kit](#) (1)
- [Phillips #1 Screwdriver](#) (1)



PARTS:

- [Sony SRS-XB40 speaker](#) (1)

Step 1 — Speaker Assembly Replacement



- Remove the speaker case from the outer casing by prying it from the base of the speaker using a metal spudger.

Step 2



- Remove the four T-8 screws (15 mm long) from the black speaker face.

Step 3



- Pry the two rubber end pieces loose enough to pry off two pieces of the long plastic casing from the speaker body using a metal spudger.

Step 4



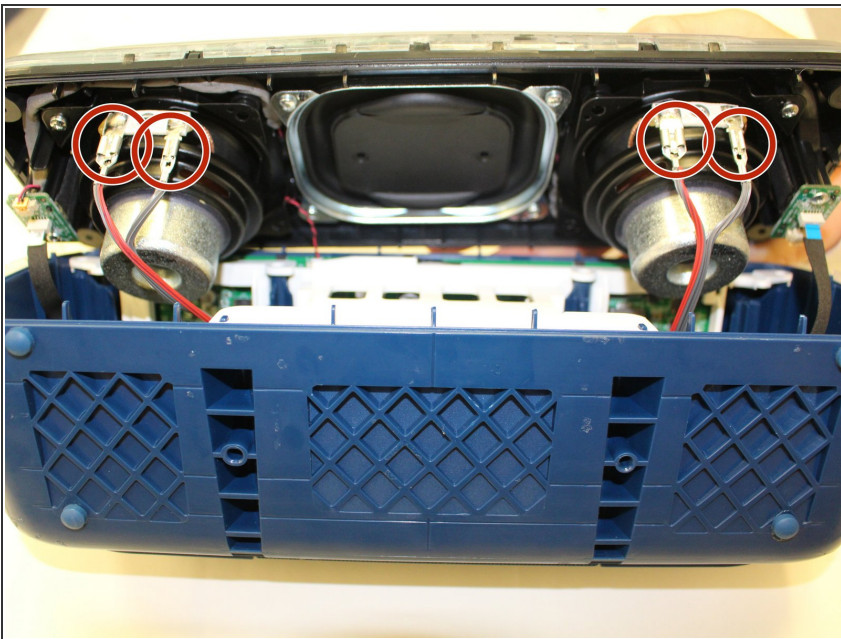
- Pry the two remaining rubber pieces of the casing completely away from the body of the speaker with the same metal pry tool.

Step 5



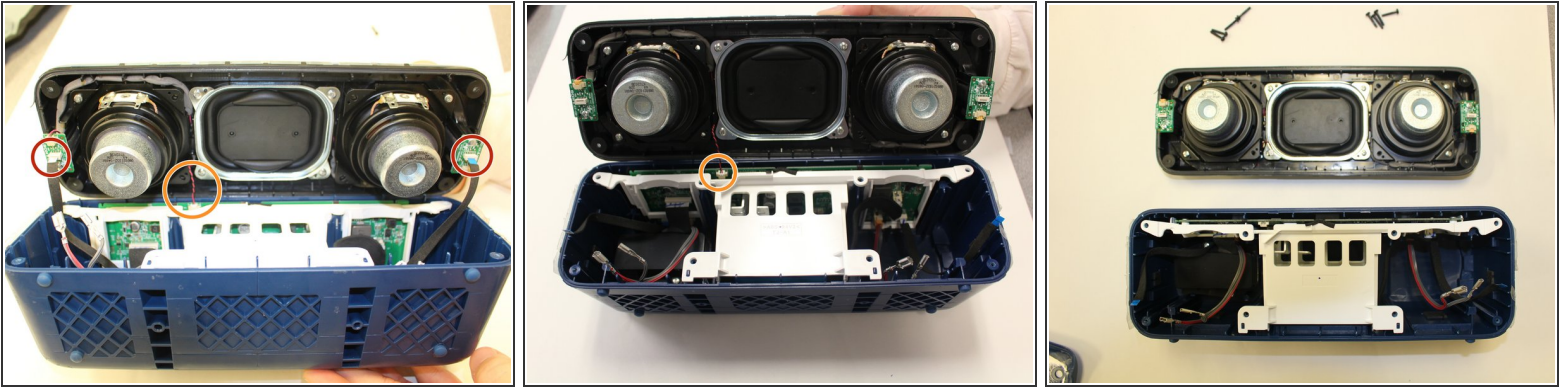
- Once you have removed the outer blue casing, four T-8 screws (15 mm long) will be revealed on each corner. After removing these screws, simply pull the top part of the speaker way from the body to get the the inner part of the speaker.

Step 6



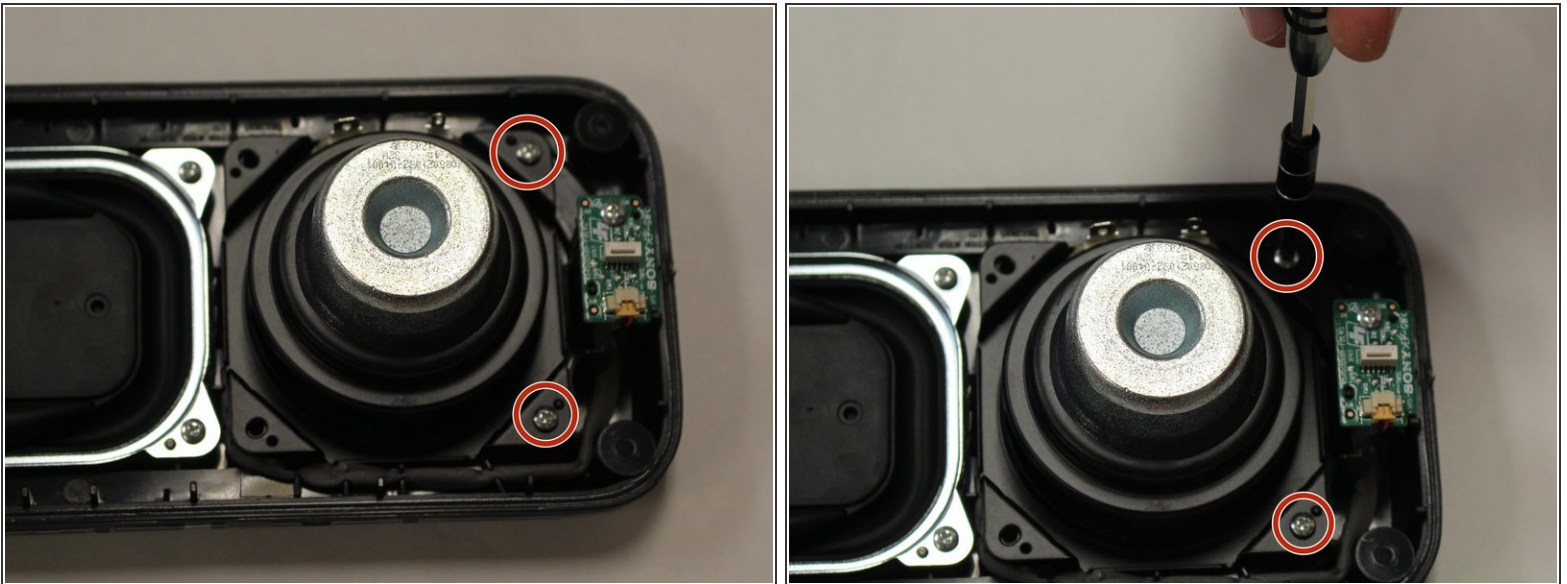
- Once you have gotten to the internal parts of the speaker, there are seven wires connecting the speaker plate to the body of the speaker. Pinch the release tabs at the top of each of the four main wires to remove them.

Step 7



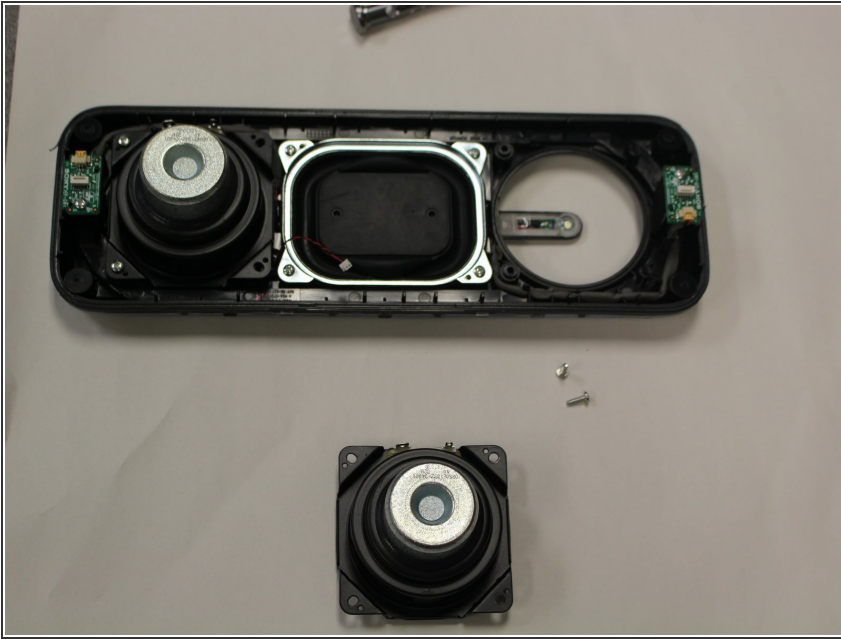
- Simply pull the thin wires on each side to remove them from their attachment points.
- Remove the final red and black wire by gently pulling it apart.
- This will ultimately detach the speaker plate from the base.

Step 8 — Speaker



- After you have gotten the speaker plate off of the main body of the speaker, there will be two PH1 10mm screws that hold on the speaker.
- Using the screwdriver and PH1 head from your toolkit, unscrew the 2 screws and place them to the side.

Step 9



- Now your speaker is free from the speaker plate and you can replace the broken or faulty one with a new one.
- Your speaker replacement is now done.

To reassemble your device, follow these instructions in reverse order.