



# Dell Alienware 14 Tron Lights Replacement

Follow this guide to remove and replace the TRON lights for the Dell Alienware 14.

Written By: Terrence15



---

## INTRODUCTION

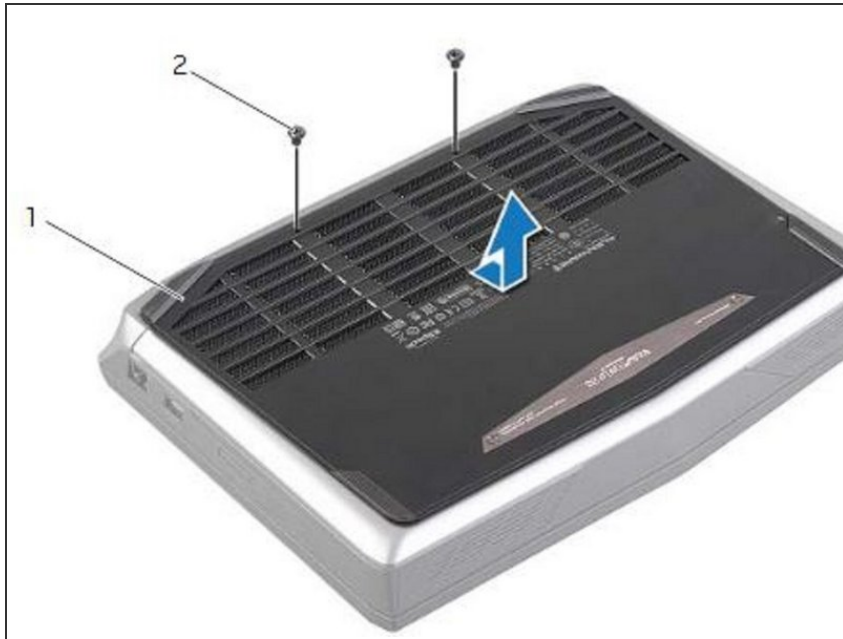
In this guide, we will show you how to remove and replace the Tron Lights.



### TOOLS:

- [Pro Tech Toolkit](#) (1)
-

## Step 1 — Close the Display



**⚠ WARNING:** Before working inside your computer, read the safety information that shipped with your computer and follow the steps in [Before You Begin](#). After working inside your computer, follow the instructions in [After Working Inside Your Computer](#).

- Close the display, and turn the computer over.

## Step 2 — Remove the Screws



- Remove the screws that secure the base cover to the computer base.

### Step 3 — Slide and Lift the Base Cover



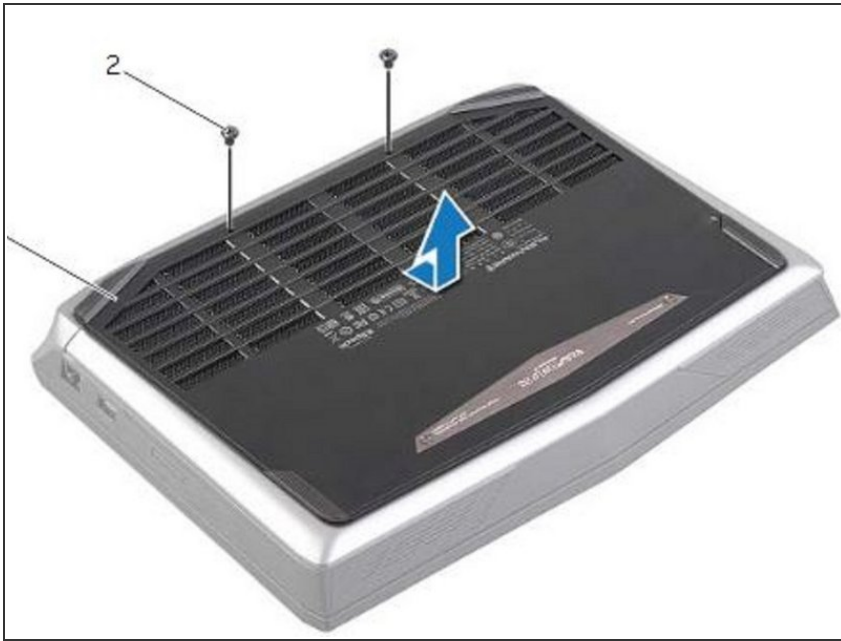
- Slide and lift the base cover off the computer base.

### Step 4 — Align the Tabs



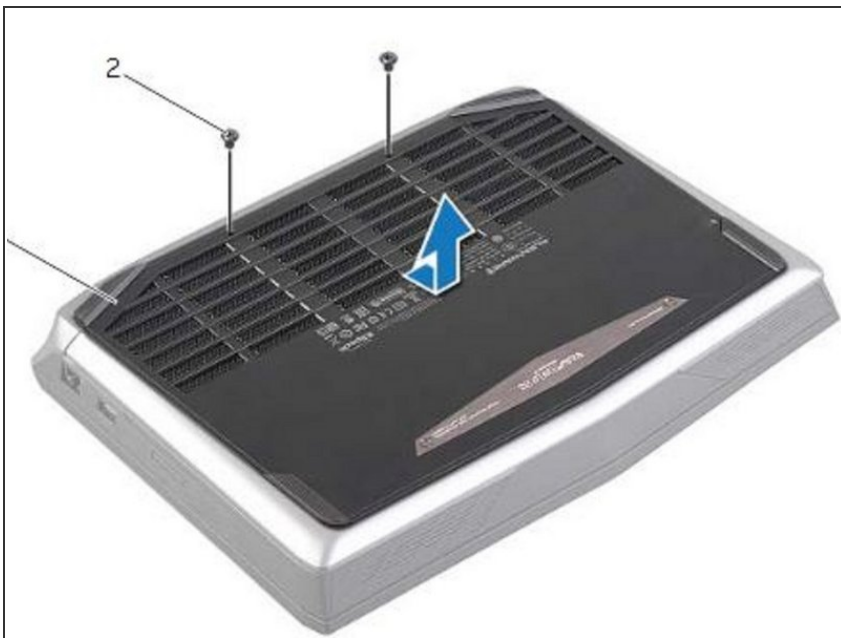
- Align the tabs on the **NEW** base cover with the slots on the computer base and slide the base cover into place.

## Step 5 — Replace the Screws



- Replace the screws that secure the base cover to the computer base.

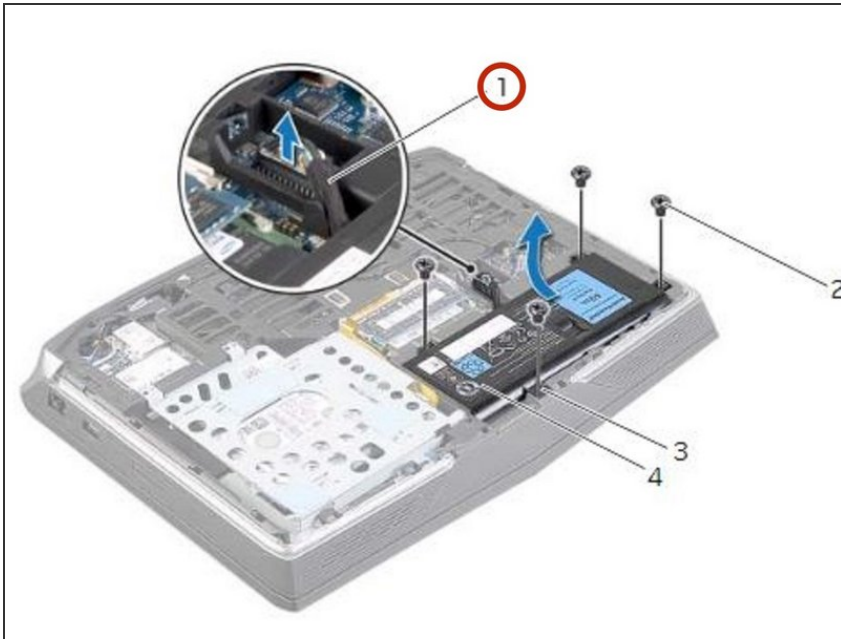
## Step 6 — Turn the Computer Over



- Turn the computer over and open the display.



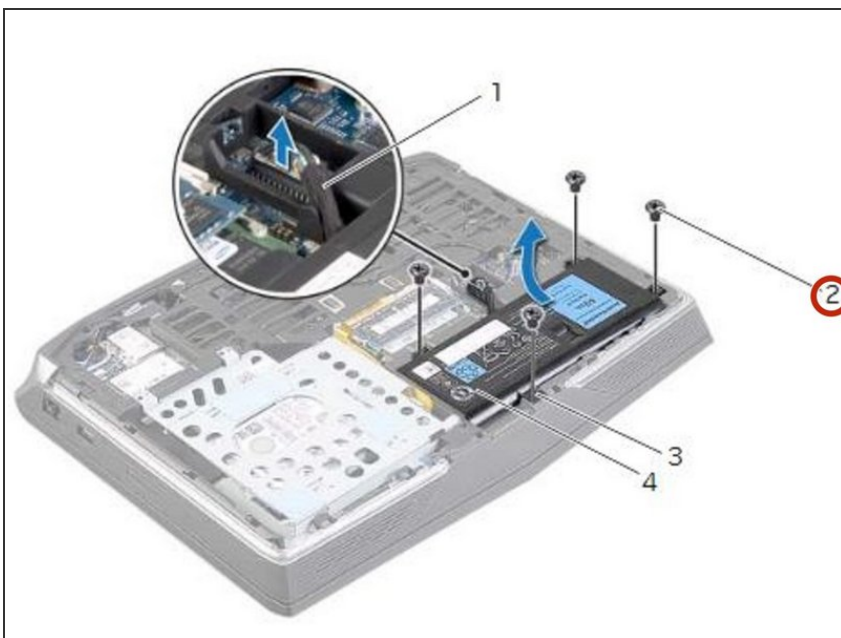
## Step 7 — Disconnecting the Battery Cable



**⚠ WARNING:** Before working inside your computer, read the safety information that shipped with your computer and follow the steps in [Before Working Inside Your Computer](#). After working inside your computer, follow the instructions in [After Working Inside Your Computer](#).

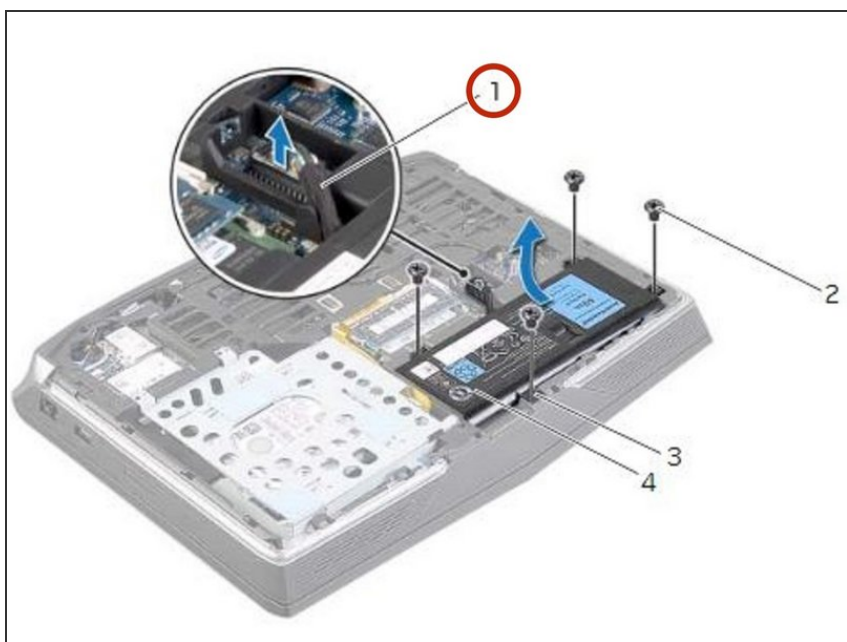
- Disconnect the battery cable from the system-board connector.

## Step 8 — Remove the Screws



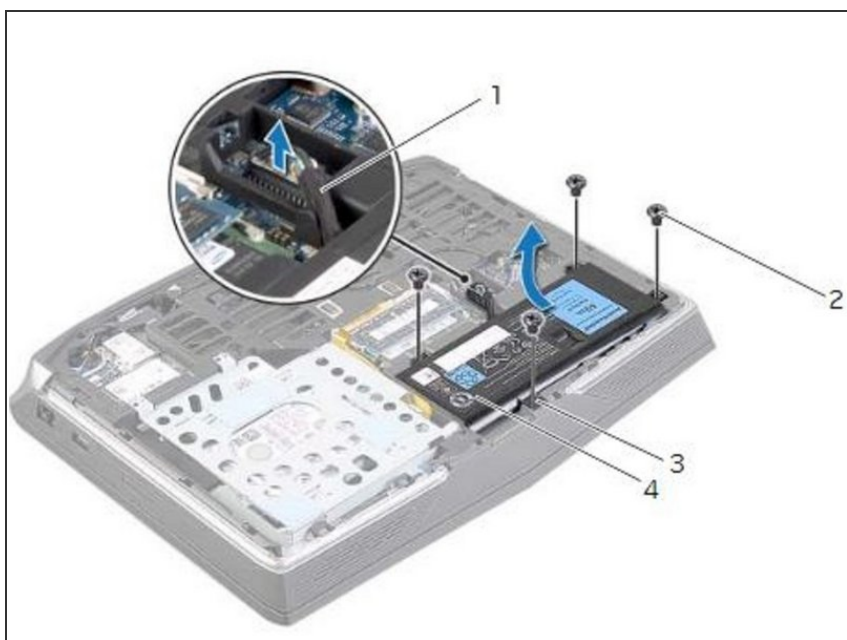
- Remove the screws that secure the battery to the computer base.

## Step 9 — Using the Battery Cable



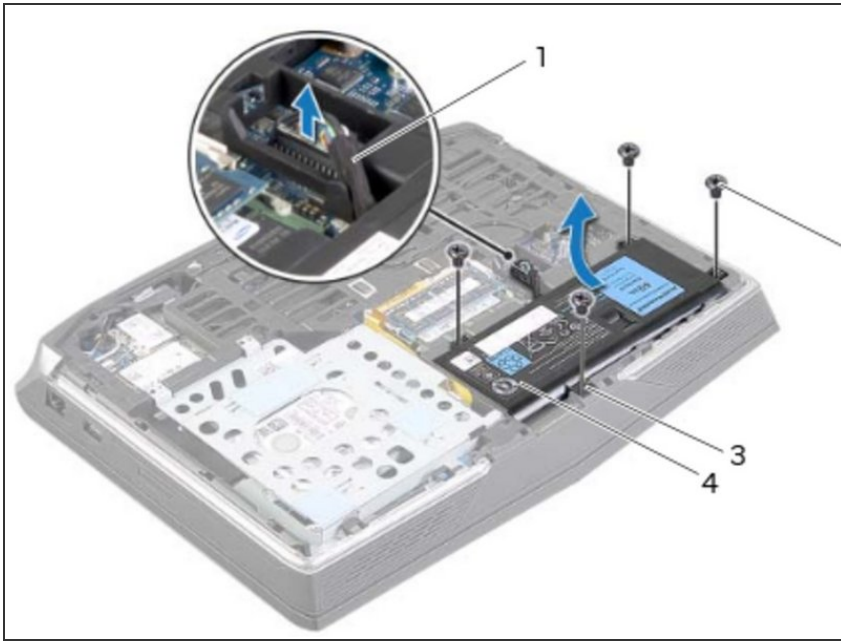
- Using the battery cable, lift the battery and release it from the tabs on the computer base.

## Step 10 — Turn the Computer Over



- Turn the computer over and open the display as far as possible.

## Step 11 — The Power Button



- Press and hold the power button for five seconds to ground the system board.

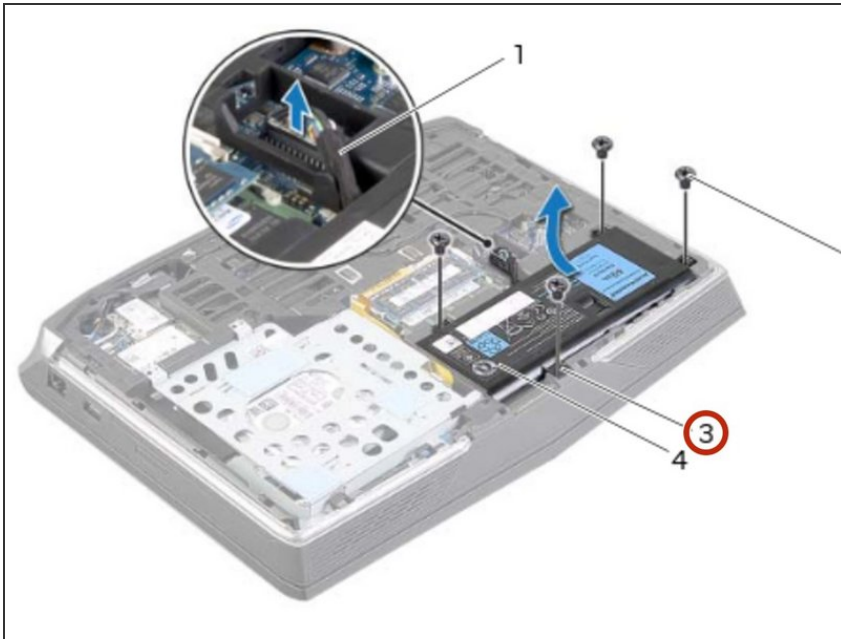
## Step 12 — Close the Display



- Close the display and turn the computer over.

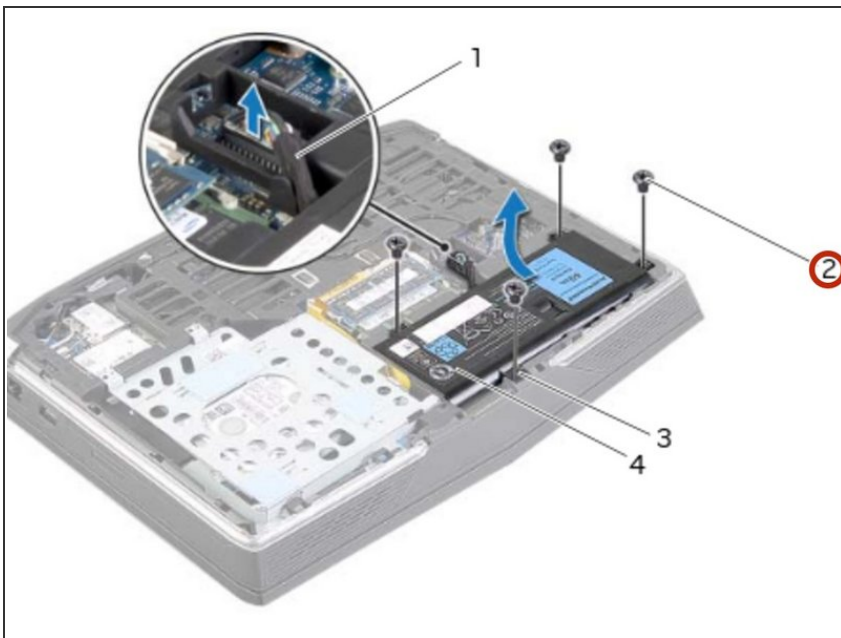


## Step 13 — Align the Tabs



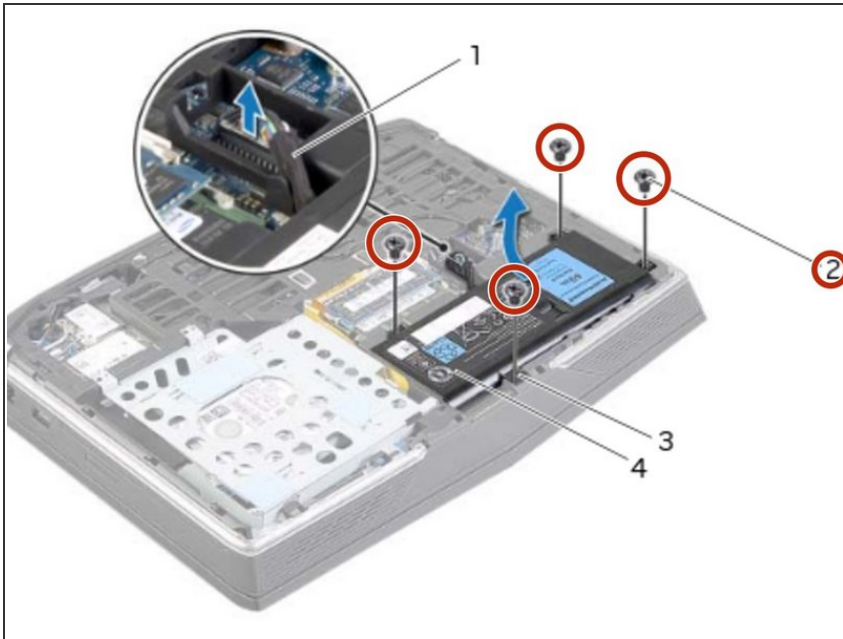
- Align the tabs on the **NEW** battery with the slots on the computer base.

## Step 14 — Align the Screw Holes



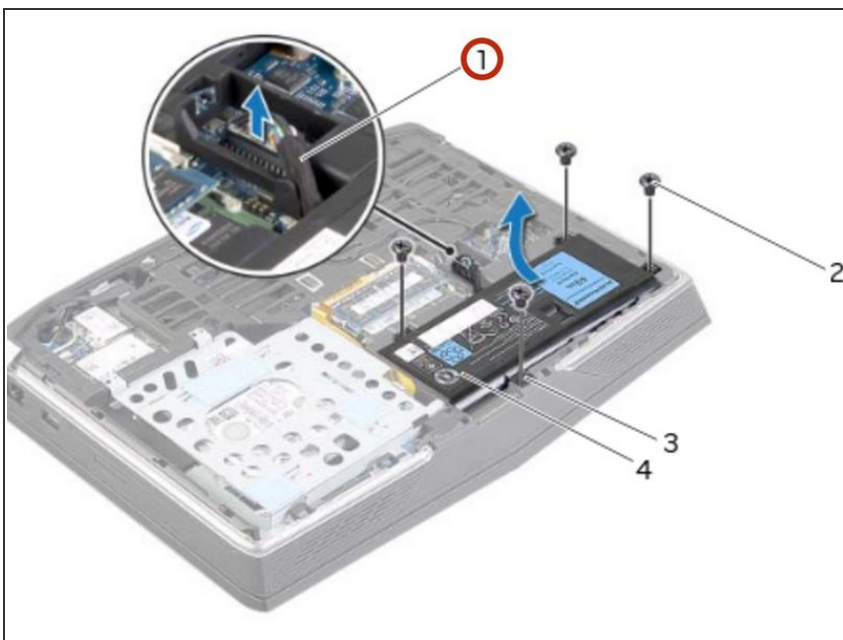
- Align the screw holes on the battery with the screw holes on the computer base.

## Step 15 — Replace the Screws



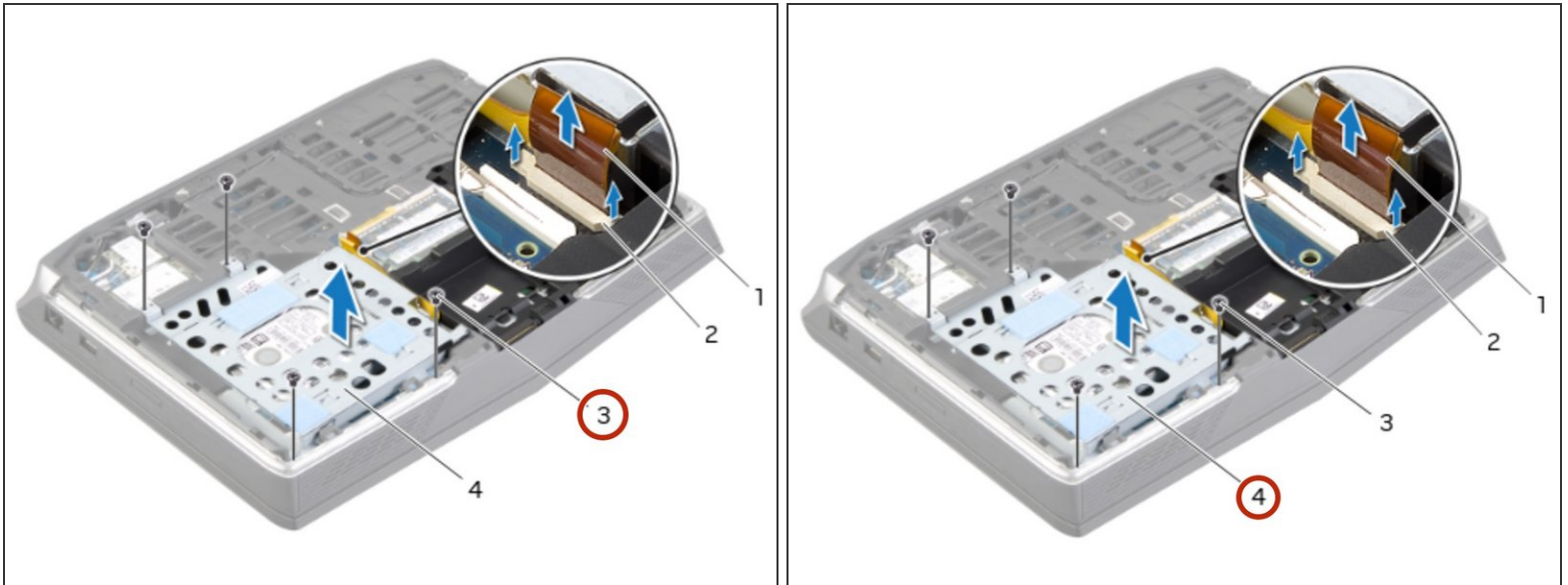
- Replace the screws that secure the battery to the computer base.

## Step 16 — Connect the Battery Cable



- Connect the battery cable to the system-board connector.

## Step 17 — Remove the Screws



**⚠ WARNING:** Before working inside your computer, read the safety information that shipped with your computer and follow the steps in [Before Working Inside Your Computer](#). After working inside your computer, follow the instructions in [After Working Inside Your Computer](#).

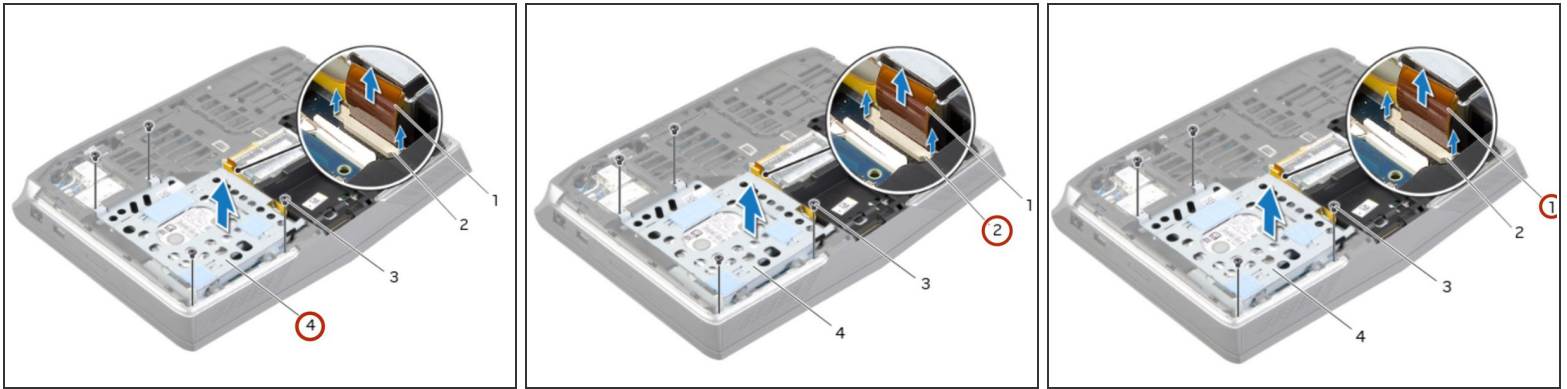
**⚠ CAUTION:** To avoid data loss, do not remove the hard drive while the computer is On or in Sleep state.

**⚠ CAUTION:** Hard drives are extremely fragile. Exercise care when handling the hard drive.

**i NOTE:** The secondary hard-drive or solid-state drive is optional and can be installed in the optical drive bay.

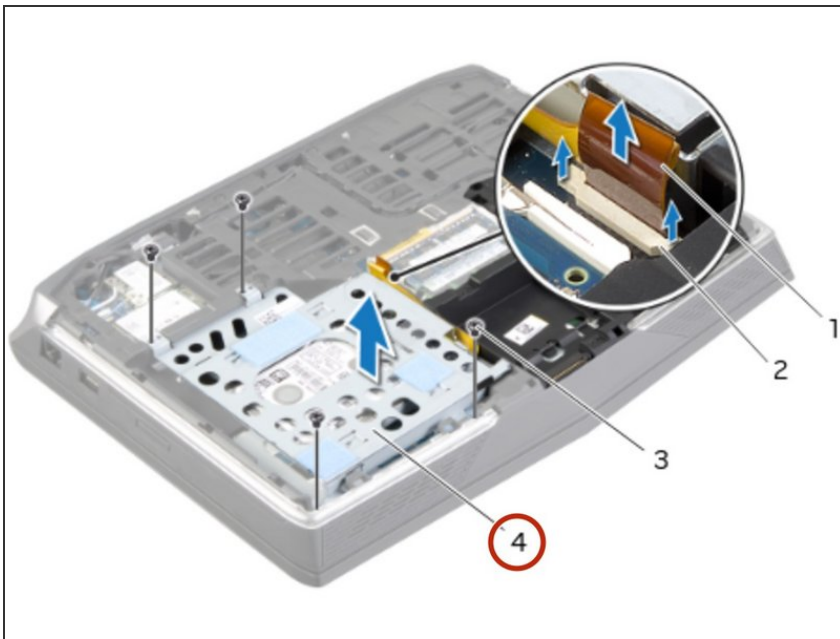
- Remove the screws that secure the secondary hard-drive assembly to the computer base.

## Step 18 — Lifting the Secondary Hard-Drive



- Carefully lift the secondary hard-drive assembly and then lift the latches to release the secondary hard-drive cable from the system-board connector.

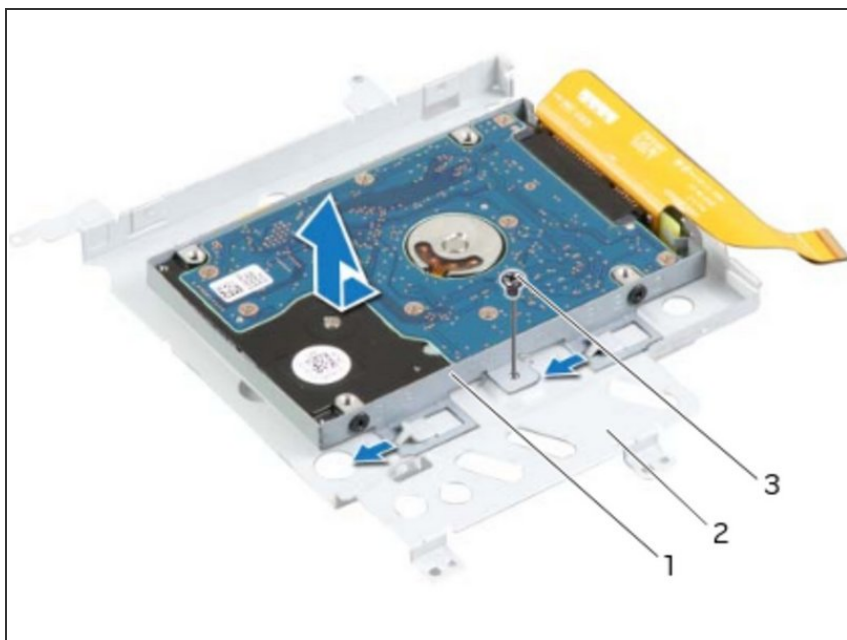
## Step 19 — Lifting the Hard Drive



- Lift the secondary hard-drive assembly off the computer base.

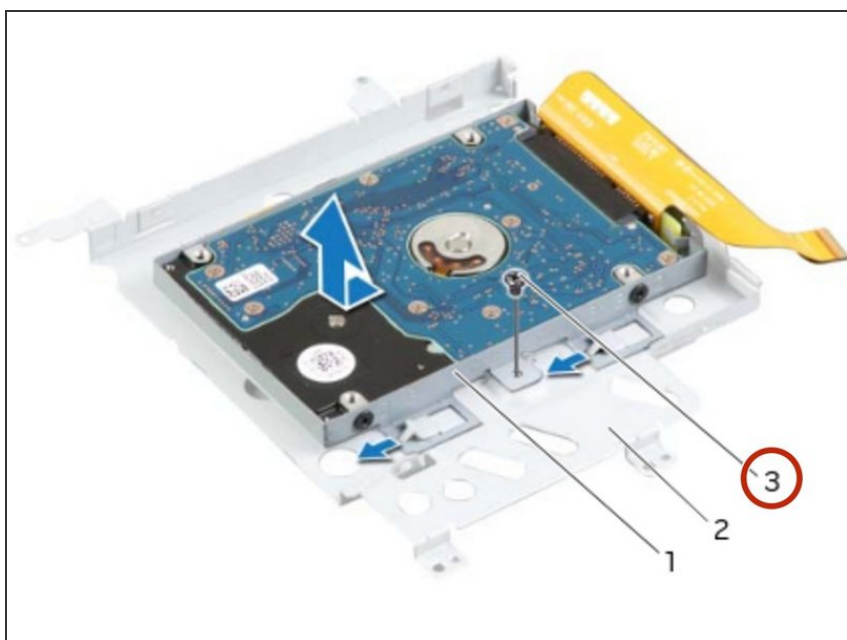


## Step 20 — Turn the Assembly Over



- Turn the secondary hard-drive assembly over.

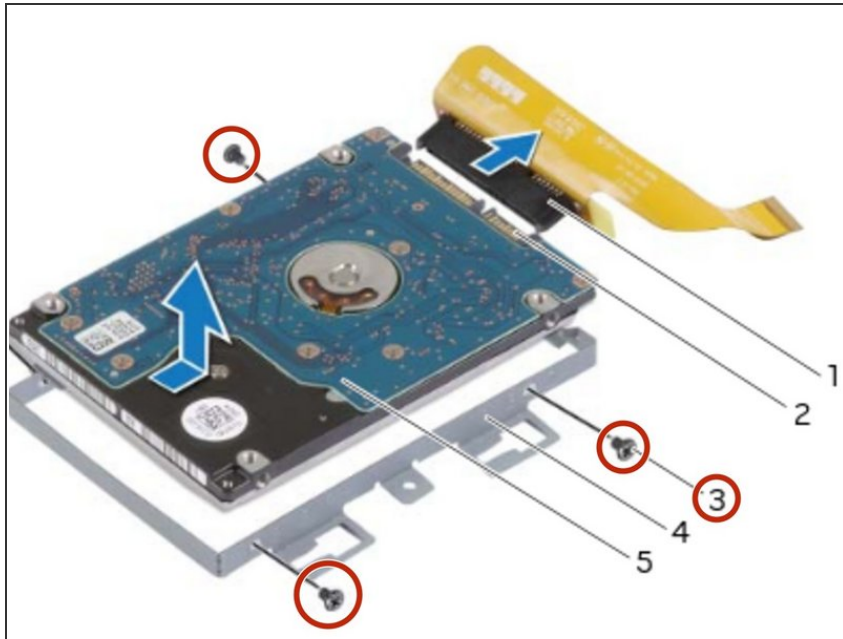
## Step 21 — Remove the Screw



- Remove the screw that secures the secondary hard-drive assembly to the main bracket.

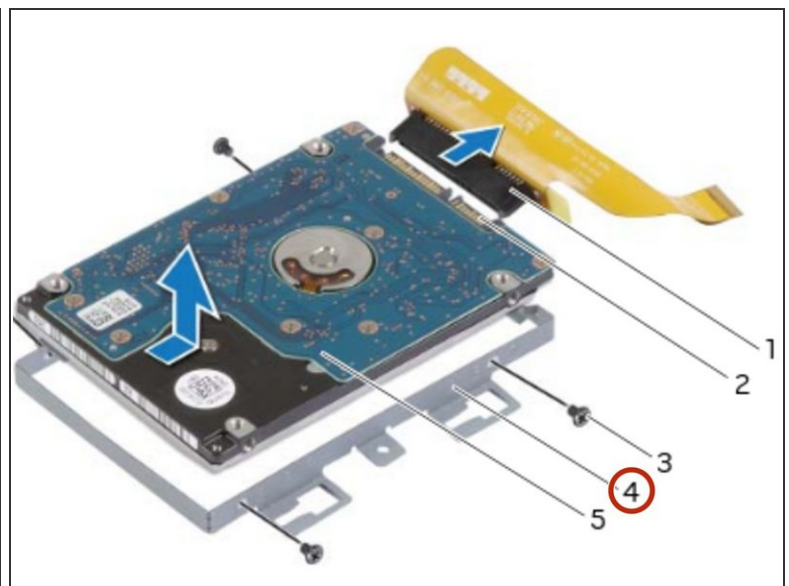
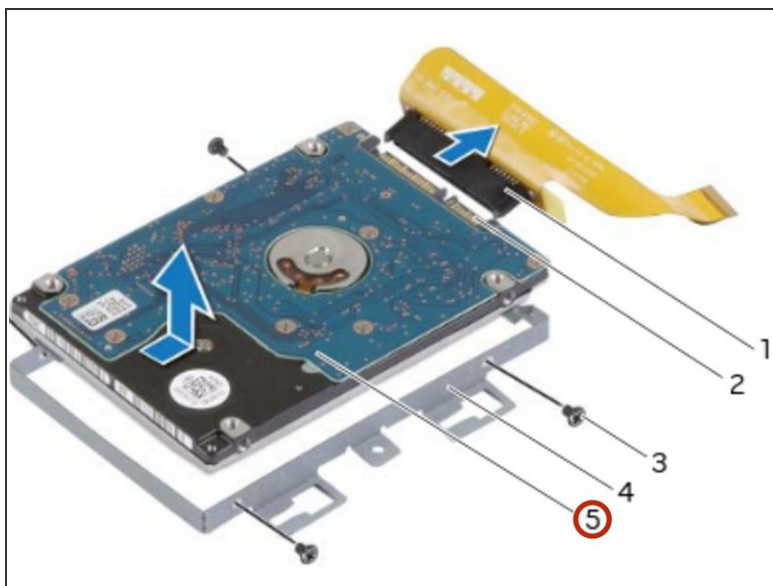


## Step 22 — Remove the Screws



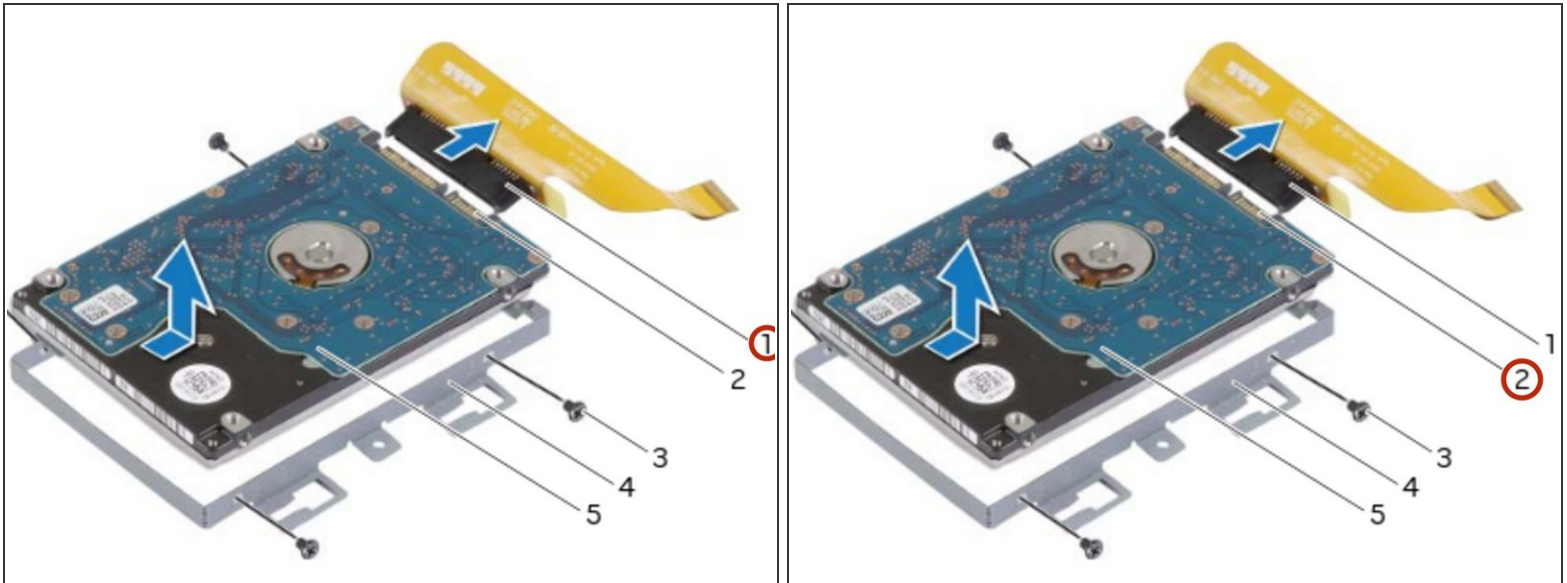
- Remove the screws that secure the secondary hard-drive to the secondary hard-drive bracket.

## Step 23 — Slide and Lift the Hard-Drive



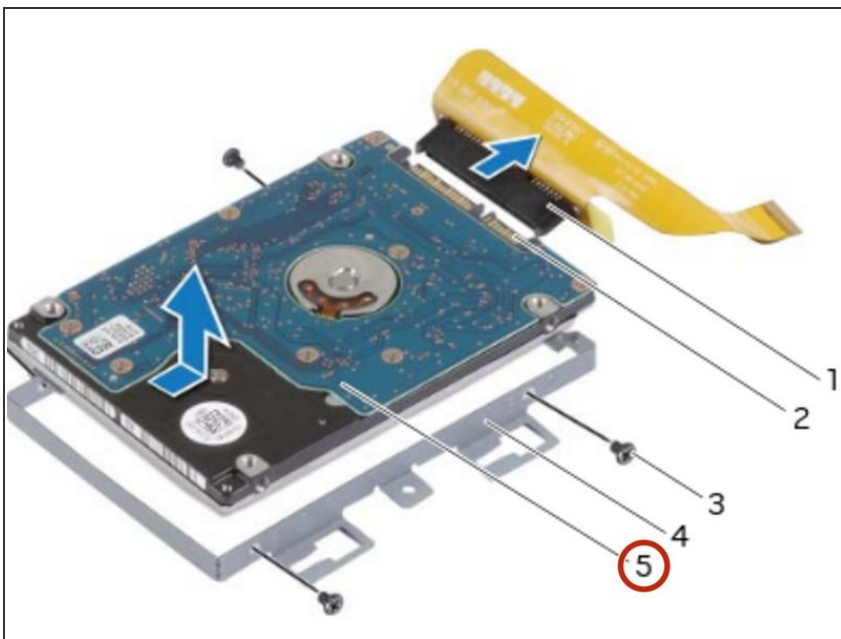
- Slide and lift the secondary hard-drive off the secondary hard-drive bracket.

## Step 24 — Disconnect the Interposer



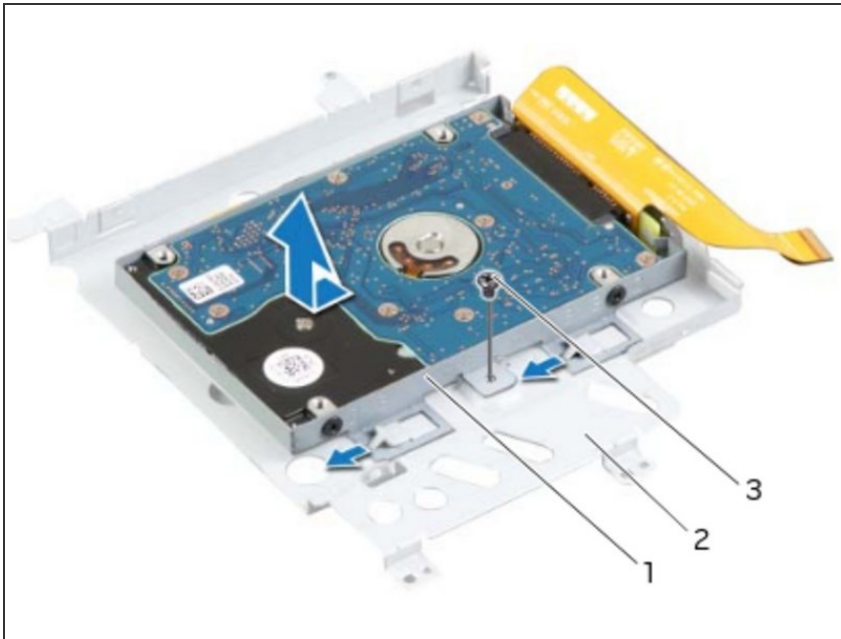
- Disconnect the interposer from the secondary hard-drive connector.

## Step 25 — Connect the Interposer



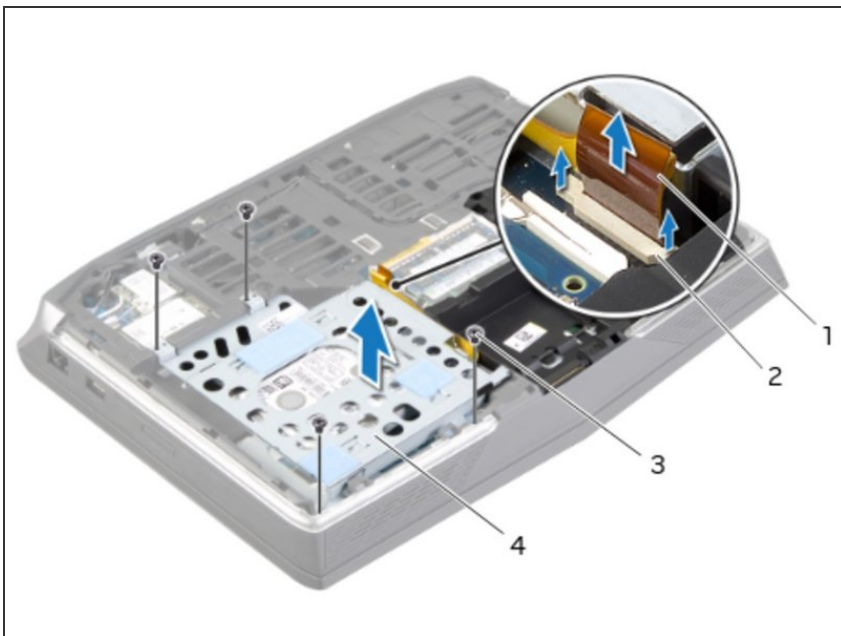
- Connect the interposer to the secondary hard-drive connector.

## Step 26 — Placing the Secondary Hard-Drive



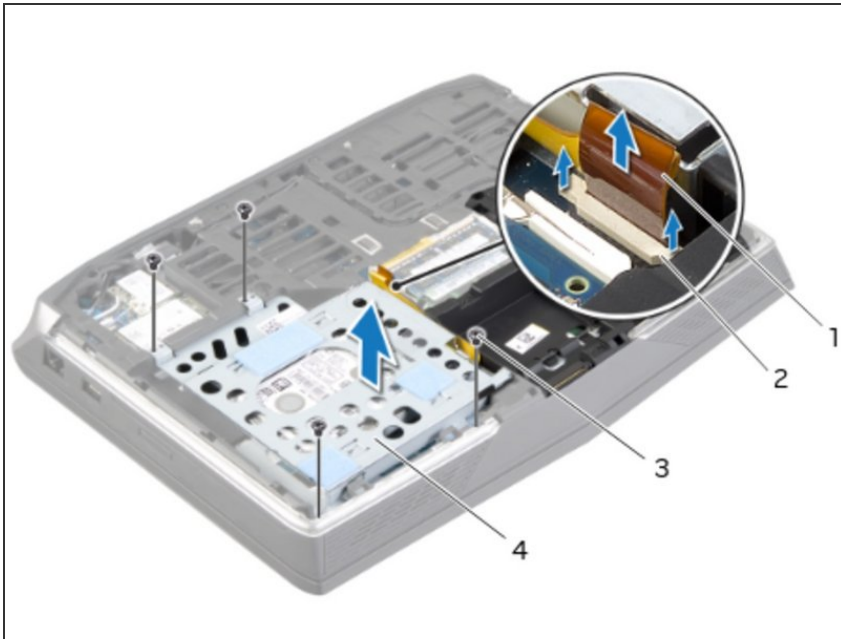
- Place the **NEW** secondary hard-drive in the secondary hard-drive bracket.

## Step 27 — Align the Screw Holes



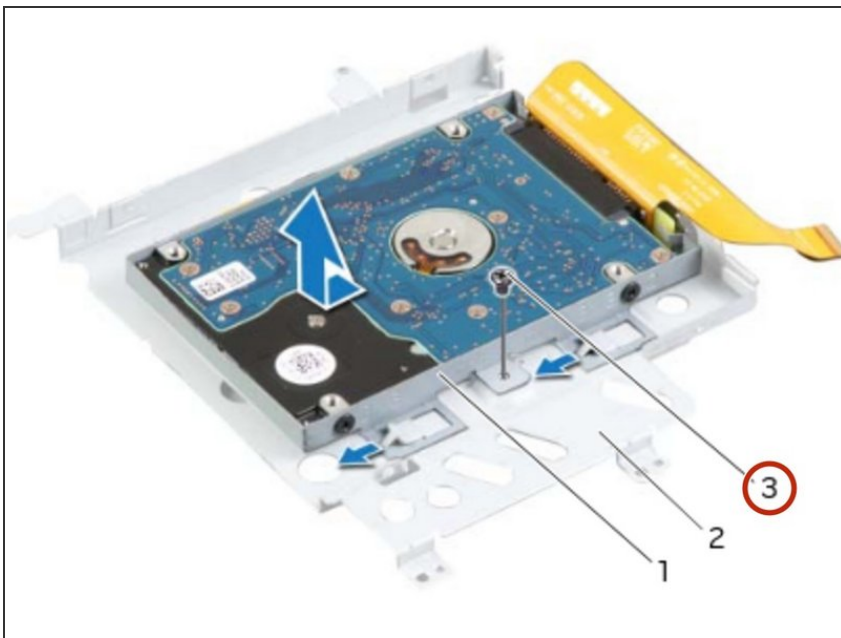
- Align the screw holes on the secondary hard-drive with the screw holes on the secondary hard-drive bracket.

## Step 28 — Replace the Screws



- Replace the screws that secure the secondary hard-drive to the secondary hard-drive bracket.

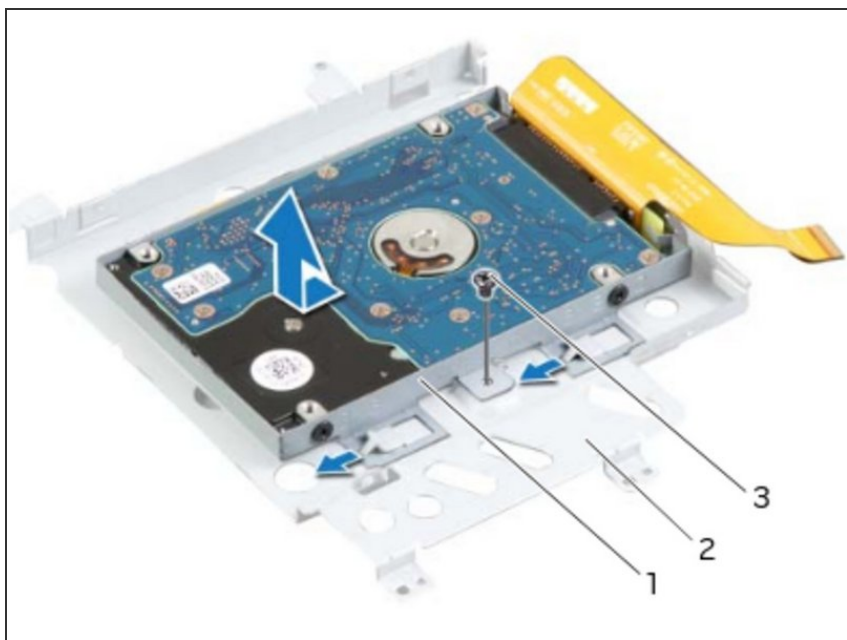
## Step 29 — Align the Screw Hole



- Align the screw hole on the secondary hard-drive assembly with the screw hole on the main bracket.

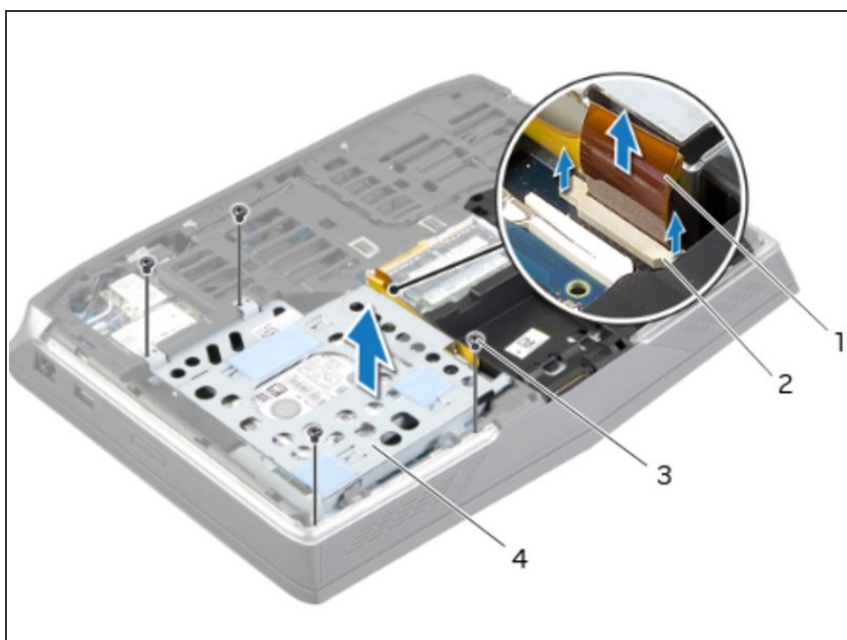


## Step 30 — Replace the Screw



- Replace the screw that secures the secondary hard-drive assembly to the main bracket.

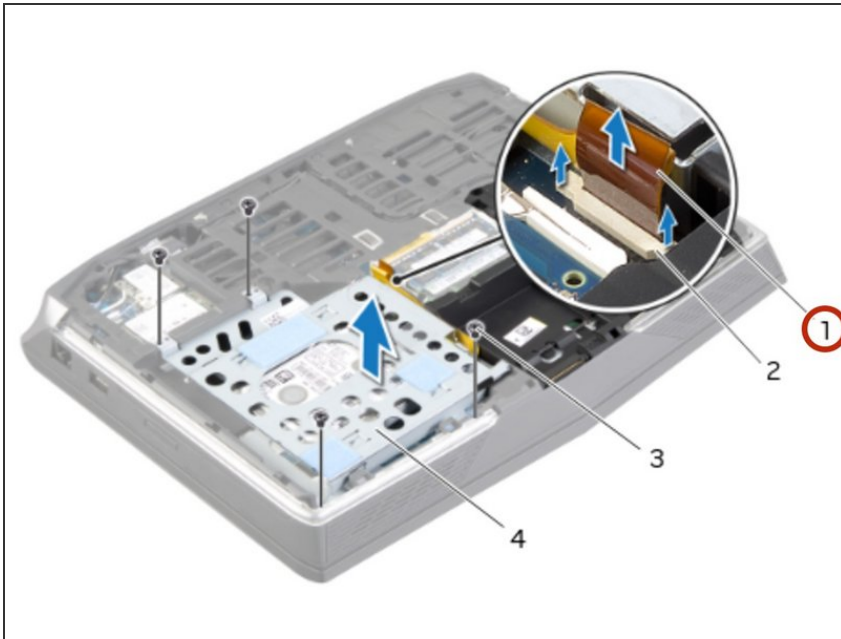
## Step 31 — Turn the Hard-Drive Assembly Over



- Turn the secondary hard-drive assembly over.

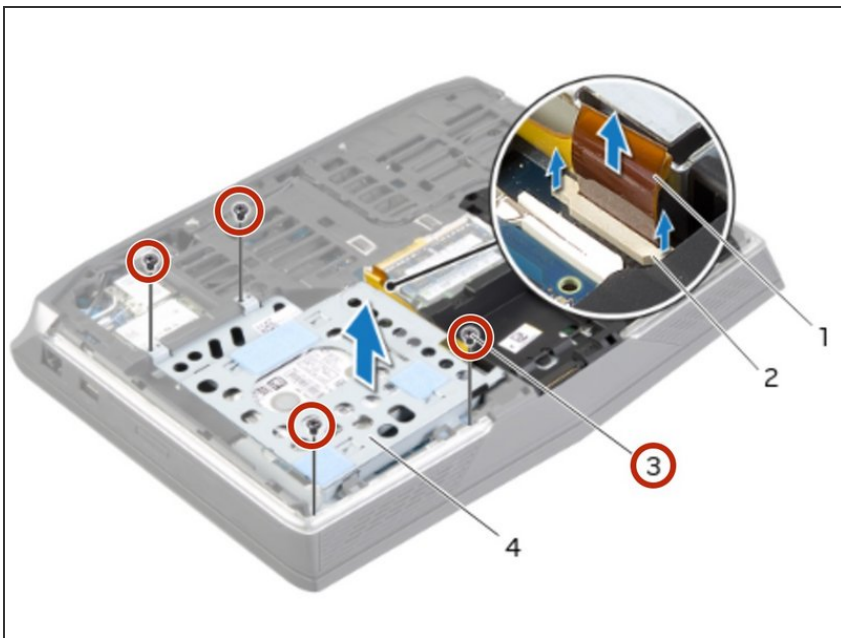


## Step 32 — Slide the Hard-Drive Cable



- Slide the secondary hard-drive cable into the system-board connector and press down on the connector latches to secure the cable.

## Step 33 — Align the Screw Holes



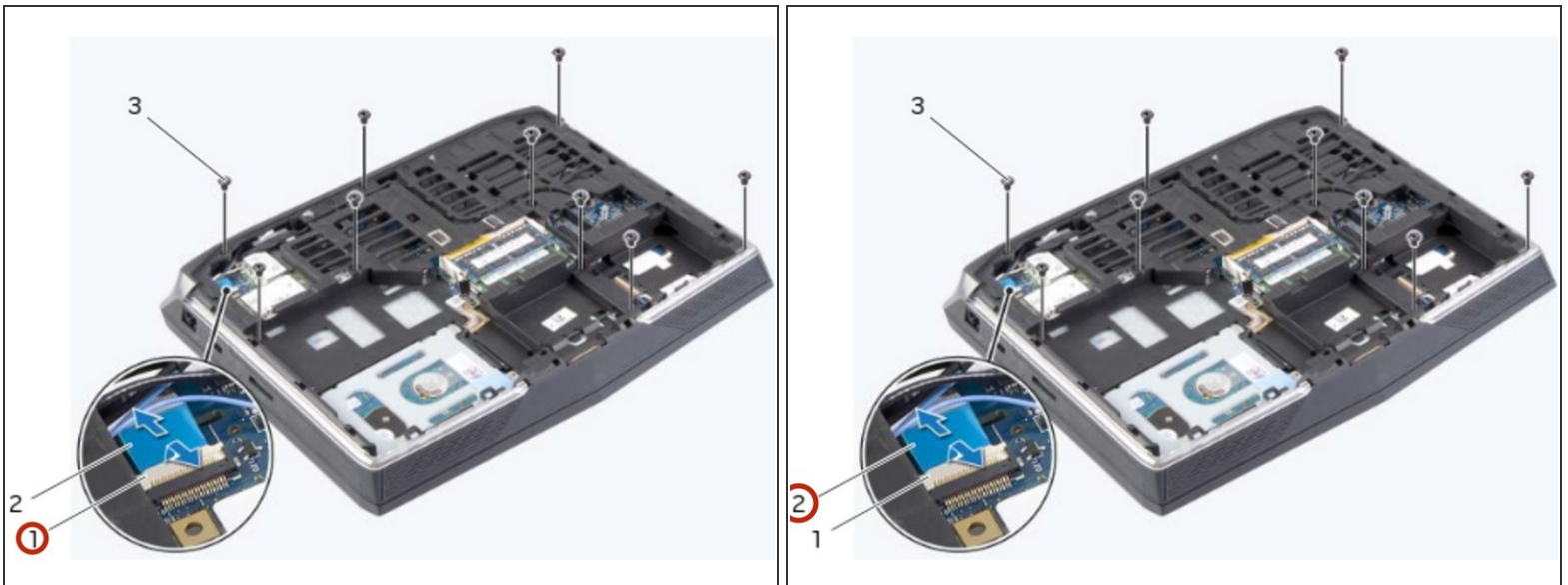
- Align the screw holes on the secondary hard-drive assembly with the screw holes on the computer base.

## Step 34 — Replace the Screws



- Replace the screws that secure the secondary hard-drive assembly to the computer base.

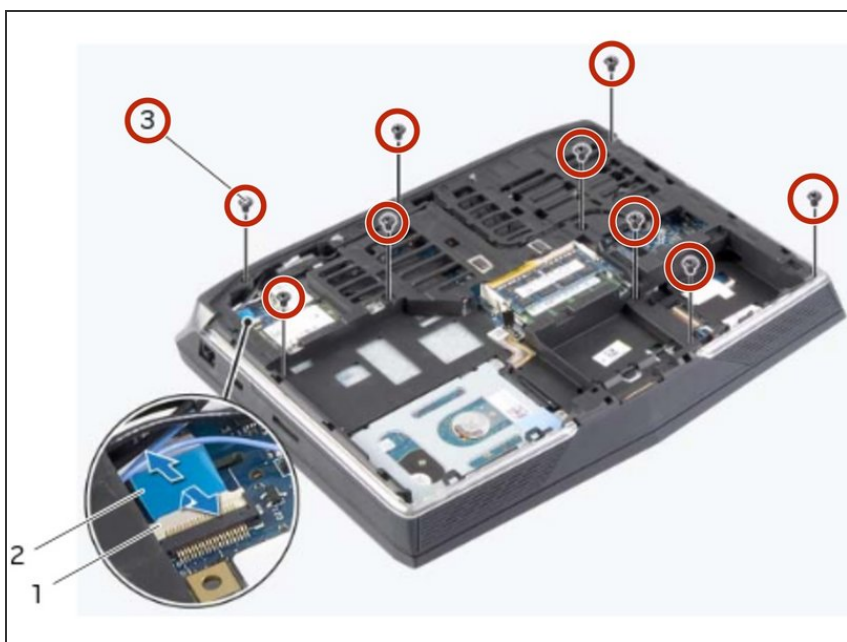
## Step 35 — Disconnecting the Status-Light Board Cable



**⚠ WARNING:** Before working inside your computer, read the safety information that shipped with your computer and follow the steps in [Before Working Inside Your Computer](#). After working inside your computer, follow the instructions in [After Working Inside Your Computer](#).

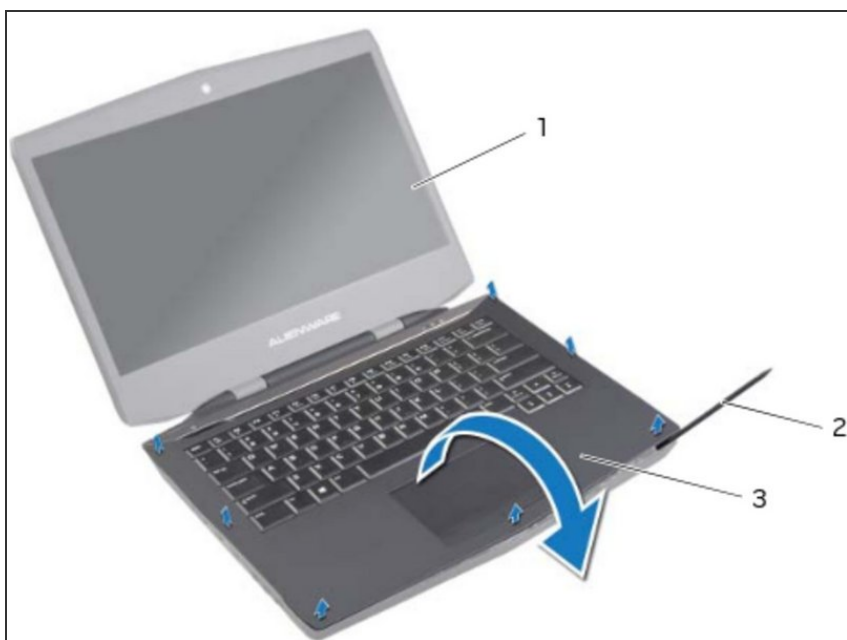
- Lift the connector latch and pull the pull-tab to disconnect the status-light board cable from the system-board connector and slide the cable into the slot on the computer base.

## Step 36 — Remove the Screws



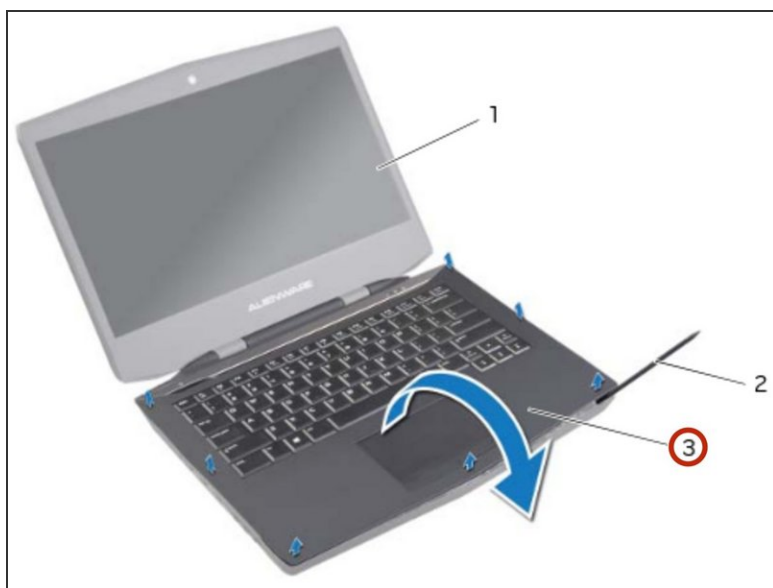
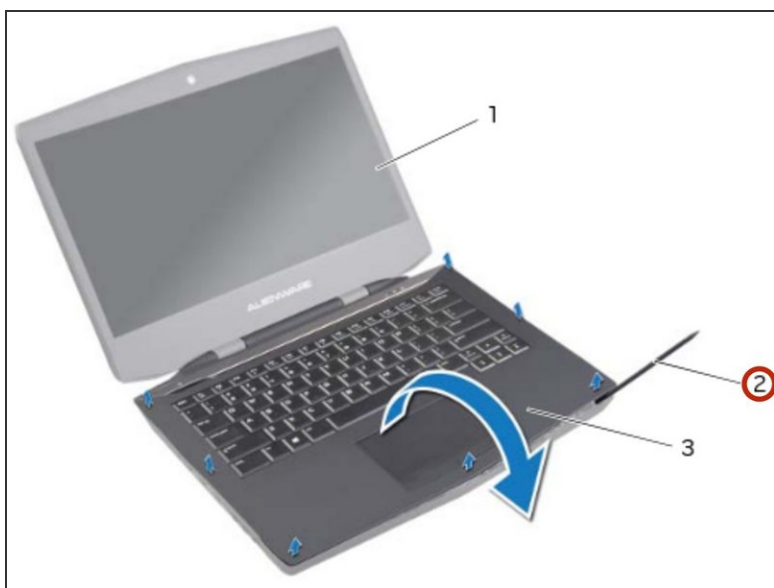
- Remove the screws that secure the palm -rest assembly to the computer base.

## Step 37 — Turn the Computer Over



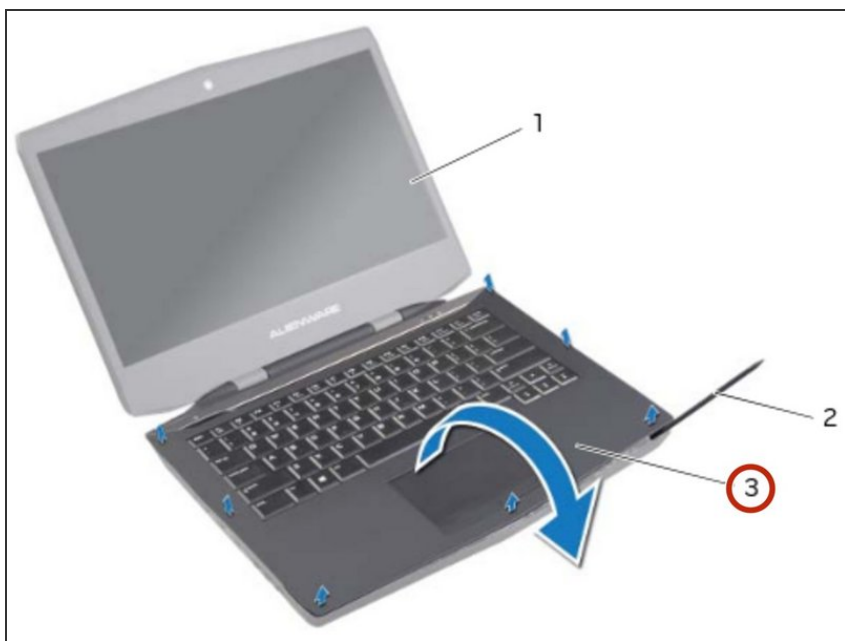
- Turn the computer over and open the display as far as possible.

## Step 38 — Pry the Palm-Rest Assembly



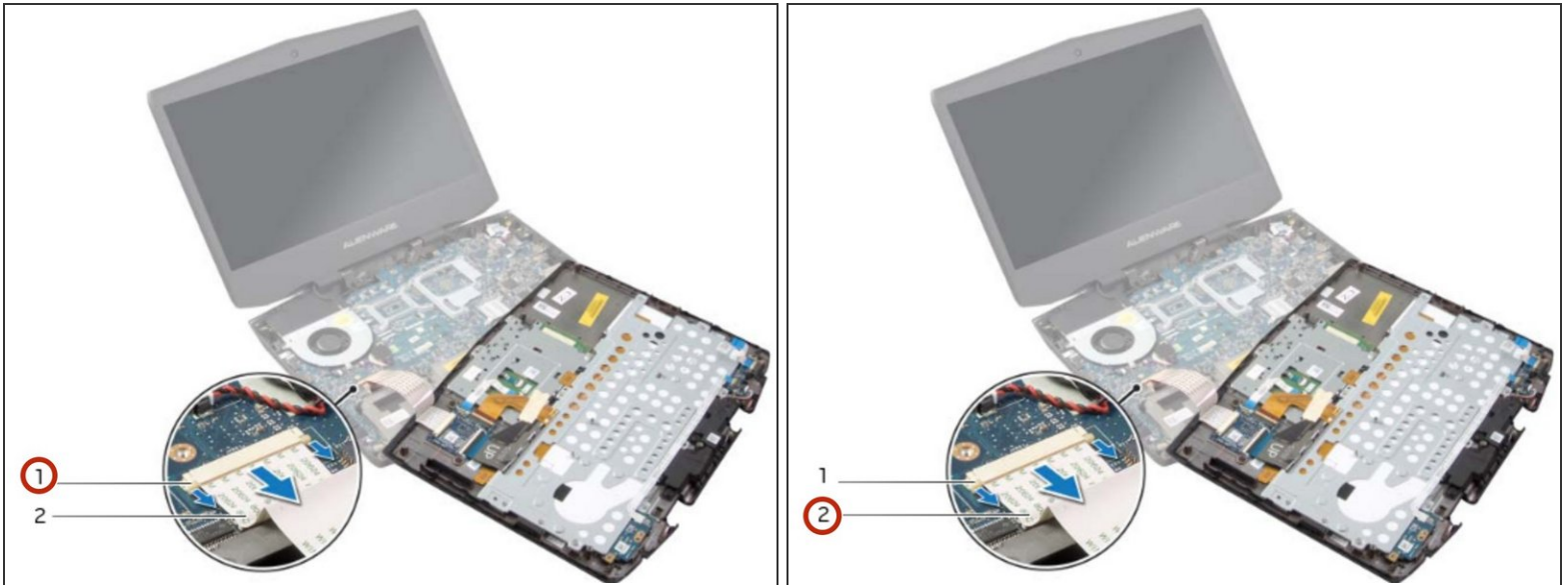
- Using a plastic scribe, pry the palm-rest assembly from the computer base.

## Step 39 — Lift the Palm-Rest Assembly



- Carefully lift the palm-rest assembly and turn it over.

## Step 40 — Release the Connector Latches



- Release the connector latches to disconnect the flexi-cable from the system board.

## Step 41 — Follow the Instructions



- Follow the instructions from step 1 to step 9 in [Removing the Keyboard](#).
- Follow the instructions from step 1 to step 4 in [Removing the Status-Light Board](#).
- Follow the instructions from step 1 to step 4 in [Removing the Speakers](#).
- Follow the instructions from step 1 to step 4 in [Removing the Power-Button Board](#).



## Step 42 — Follow Instructions



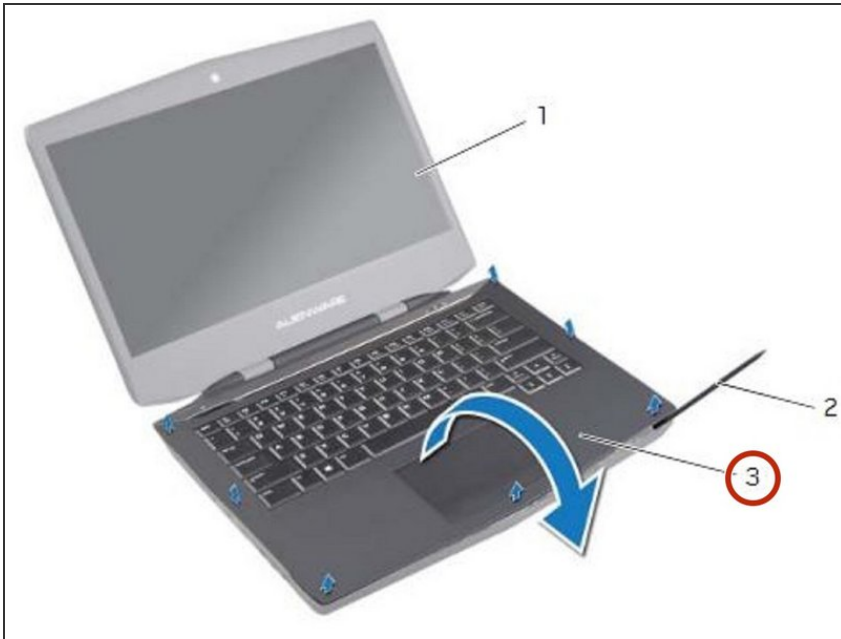
- Follow the instructions from step 1 to step 4 in [Replacing the Power-Button Board](#).
- Follow the instructions from step 1 to step 3 in [Replacing the Speakers](#).
- Follow the instructions from step 1 to step 4 in [Removing the Status-Light Board](#).
- Follow the instructions from step 1 to step 8 in [Replacing the Keyboard](#).

## Step 43 — Connect the Flexi-Cable



- Connect the flexi-cable to the connector on the system board.

## Step 44 — Turn the Palm-Rest Assembly



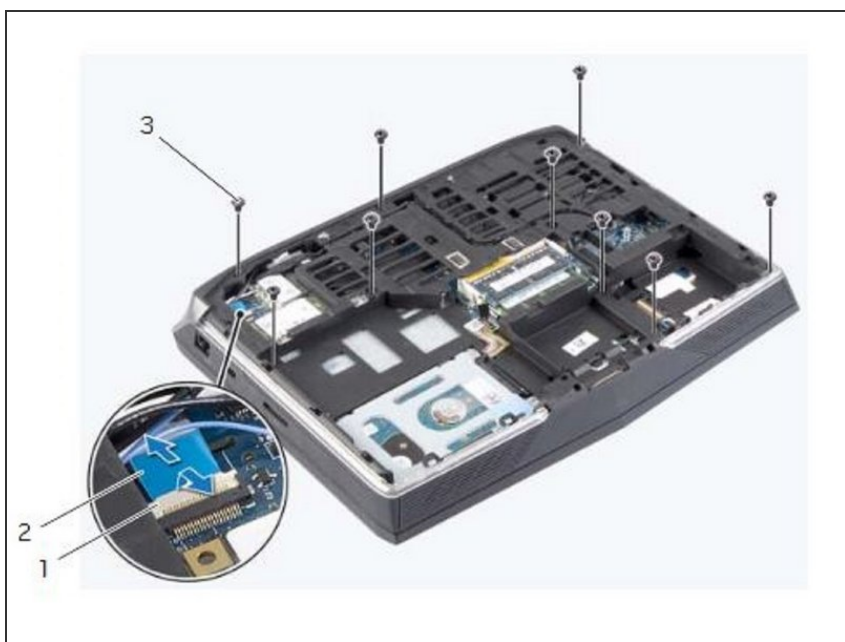
- Turn the **NEW** palm-rest assembly over and slide the status-light board cable through the slot on the computer base.

## Step 45 — Align the Palm-Rest Assembly



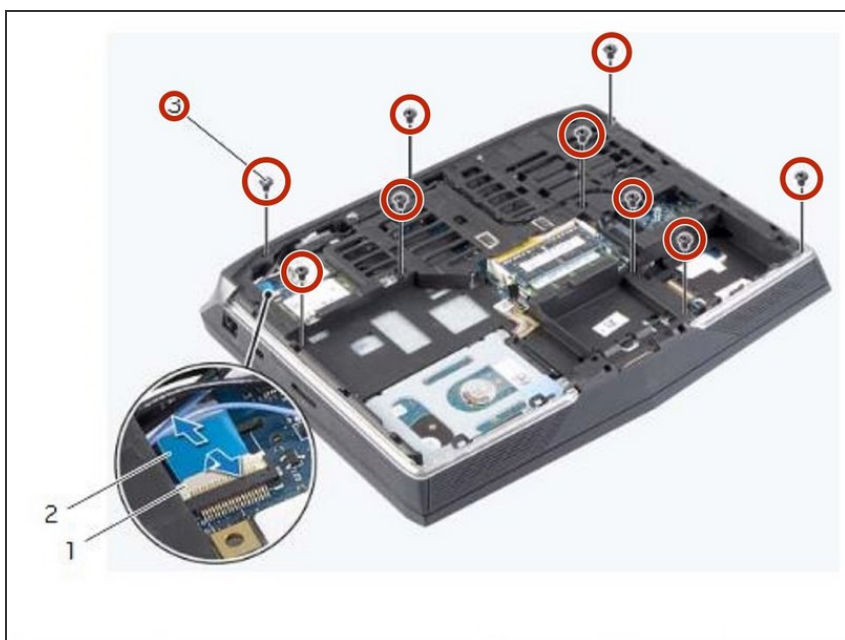
- Align the palm-rest assembly over the computer base and snap the palm-rest assembly into place.

## Step 46 — Close the Display



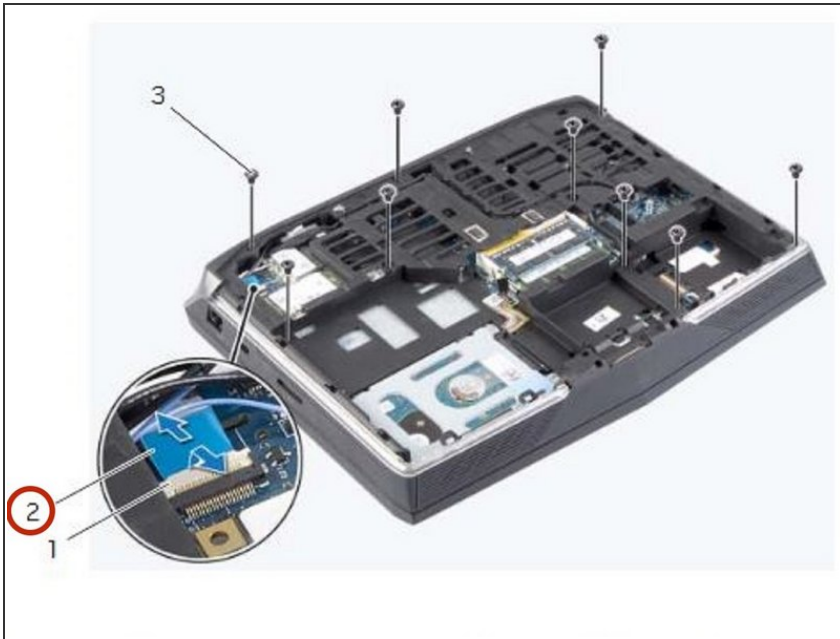
- Close the display and turn the computer over.

## Step 47 — Replace the Screws



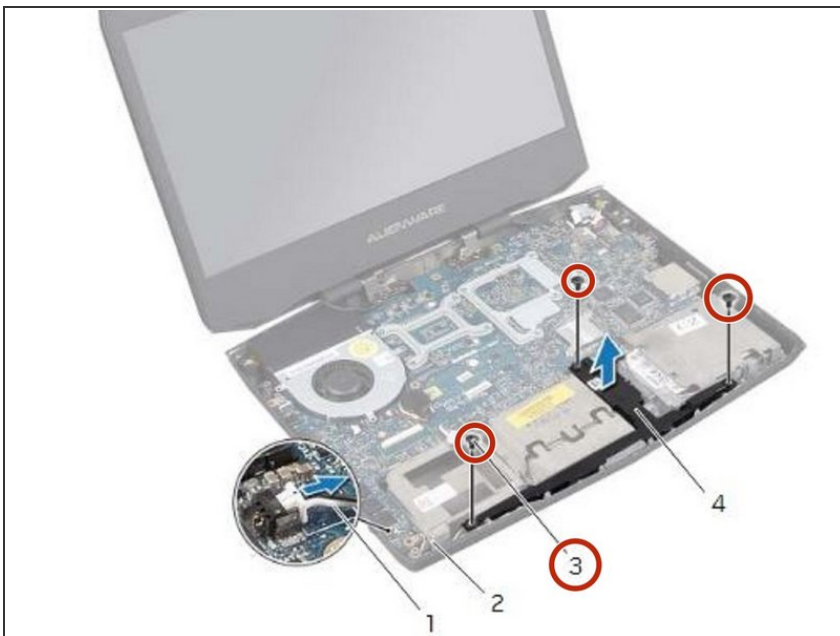
- Replace the screws that secure the palm-rest assembly to the computer base.

## Step 48 — Slide the Status-Light Board Cable



- Slide the status-light board cable into the system-board connector and press on the connector latch to secure the cable.

## Step 49 — Remove the Screws



**⚠ WARNING:** Before working inside your computer, read the safety information that shipped with your computer and follow the steps in [Before Working Inside Your Computer](#). After working inside your computer, follow the instructions in [After Working Inside Your Computer](#).

- Remove the screws that secure the subwoofer to the computer base.

## Step 50 — Disconnecting the Subwoofer Cable



- Disconnect the subwoofer cable from the system-board connector.

## Step 51 — Remove the Subwoofer Cable



- Note the subwoofer cable routing and remove it from the routing guide.

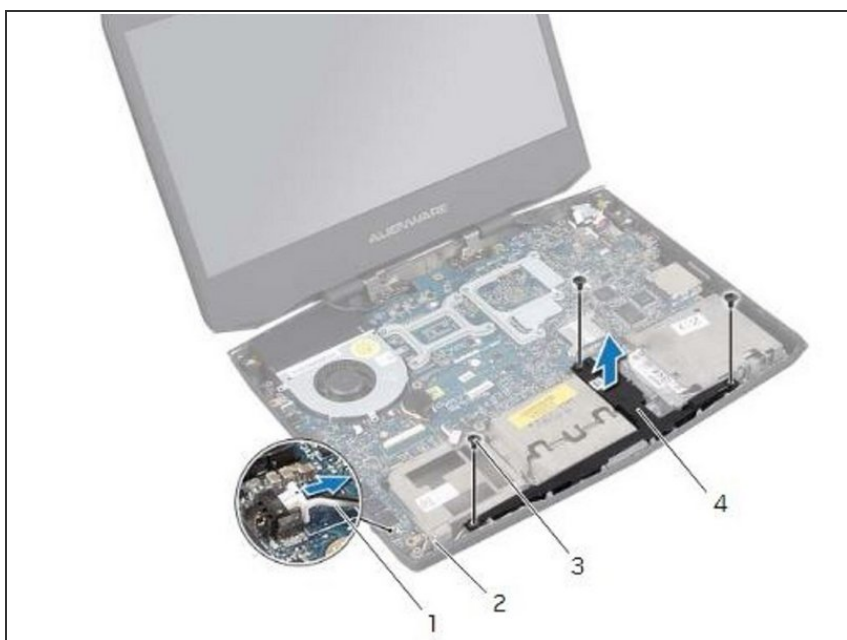


## Step 52 — Lifting the Subwoofer



- Lift the subwoofer along with its cable away from the computer base.

## Step 53 — Using the Alignment Posts



- Use the alignment posts on the computer base to keep the **NEW** subwoofer in place.

## Step 54 — Replace the Screws



- Replace the screws that secure the subwoofer to the computer base.

## Step 55 — Route the Subwoofer Cable



- Route the subwoofer cable through the routing guide and connect the cable to the system-board connector.

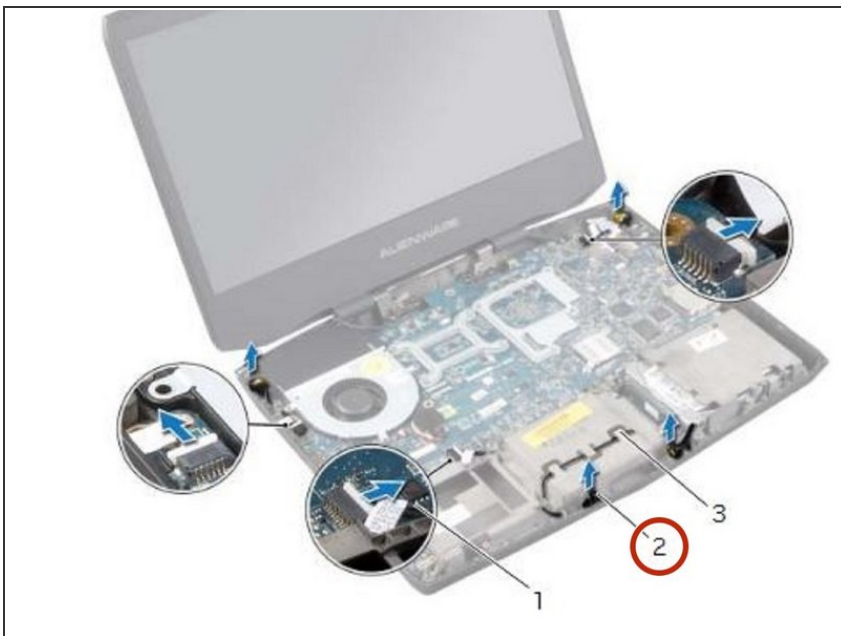
## Step 56 — Disconnect the Tron-Light Cables



**⚠ WARNING:** Before working inside your computer, read the safety information that shipped with your computer and follow the steps in [Before Working Inside Your Computer](#). After working inside your computer, follow the instructions in [After Working Inside Your Computer](#).

- Disconnect the tron-light cables from the system-board connectors.

## Step 57 — Disconnect the Tron Lights



- Disconnect the tron lights from the optical fibers.

## Step 58 — Lifting the Tron Lights



- Lift the tron lights along with their cables off the computer base.

## Step 59 — Connecting the Tron Lights



- Connect the **NEW** tron lights to the optical fibres.



## Step 60 — Routing the Tron-Light Cables



- Route the tron-light cables through the routing guides on the computer base.

## Step 61 — Connecting the Tron-Light Cables



- Connect the tron-light cables to their respective connectors on the system-board.

To reassemble your device, follow these instructions in reverse order.