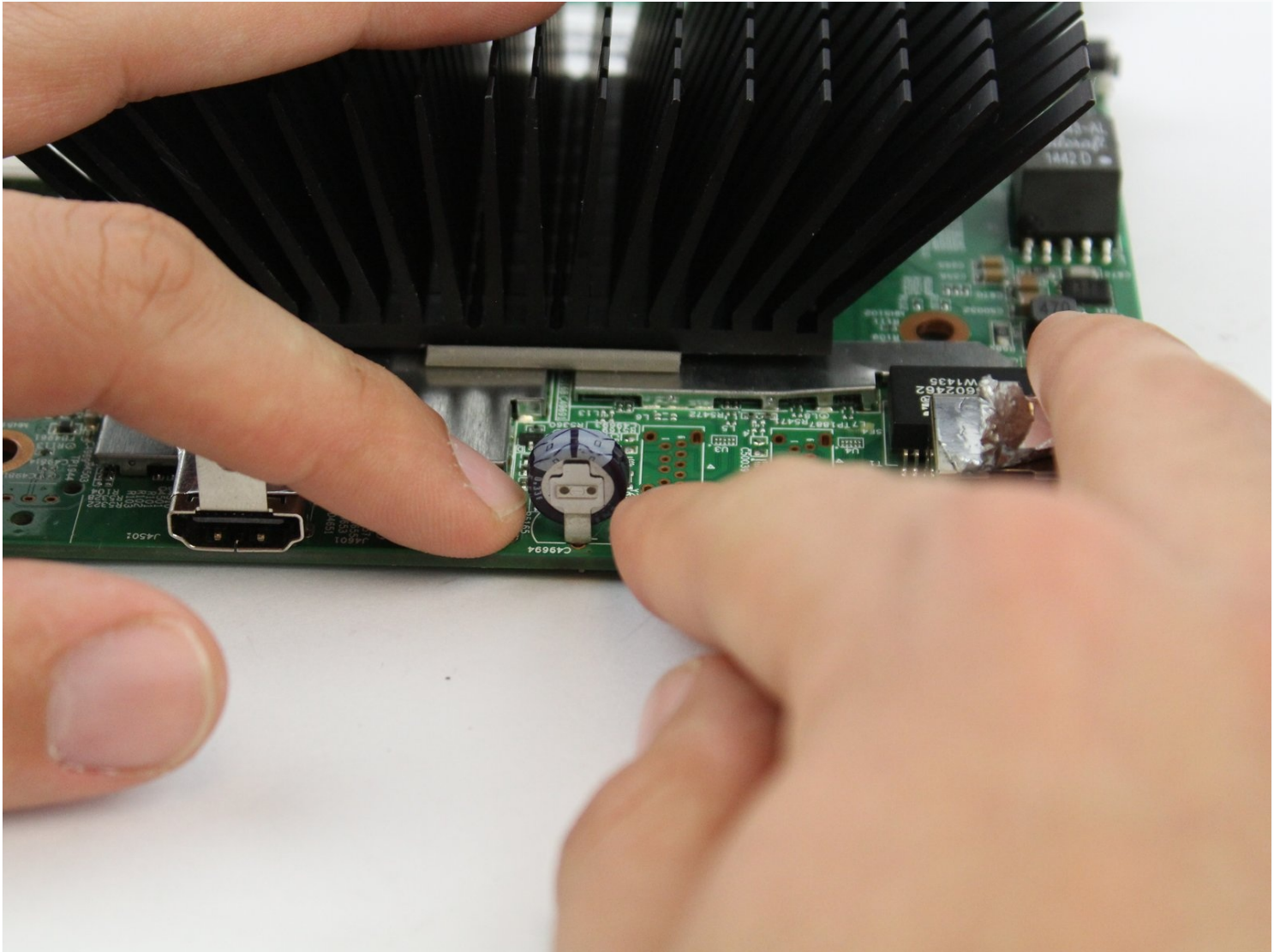




# Brightsign 4k Battery Replacement

The battery is essential and can wear out or...

Written By: Tuong Ngo



# INTRODUCTION

The battery is essential and can wear out or stop working over time. This guide will show you how to properly remove it.

**Tech Tip:** this Replacement guide will require the use of a soldering iron to remove solders, so check out the [soldering guide](#) if you're unfamiliar with the process.

---

## TOOLS:

[JIS #0 Screwdriver](#) (1)

[54 Bit Driver Kit](#) (1)

[Soldering Iron 60w Hakko 503F](#) (1)

[Desoldering Pump](#) (1)

---

## Step 1 — Outer Shell



- Remove three 8mm screws from the left side of the device.
- Remove four 8mm screws from the right side of the device.

## Step 2



- Apply pressure on the SD card to pop it out of the port.
- Remove the card by pulling it out.

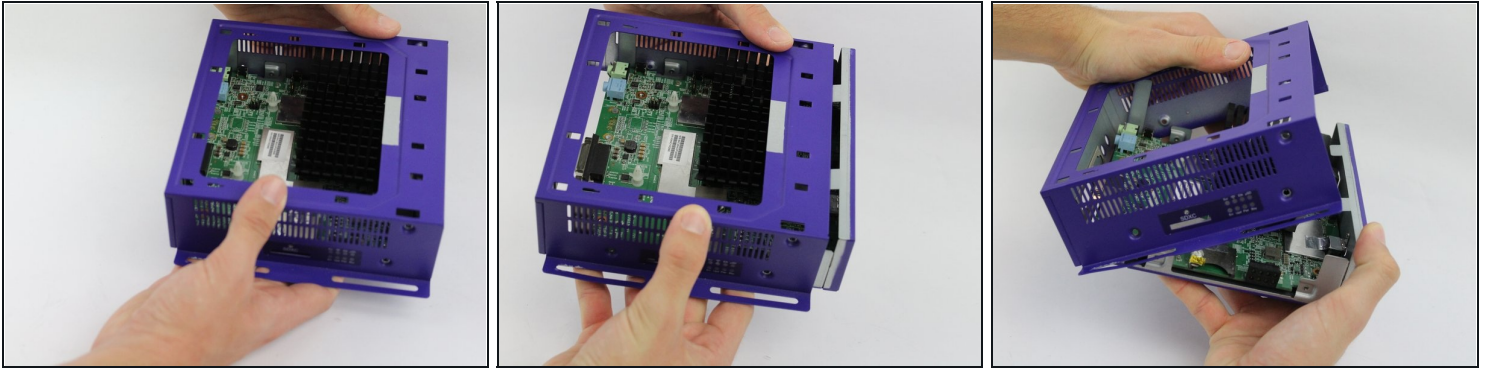
## Step 3



- Press down on the top cover of the device and slid it towards you until you see a slight gap created.
- Lift the top cover off.

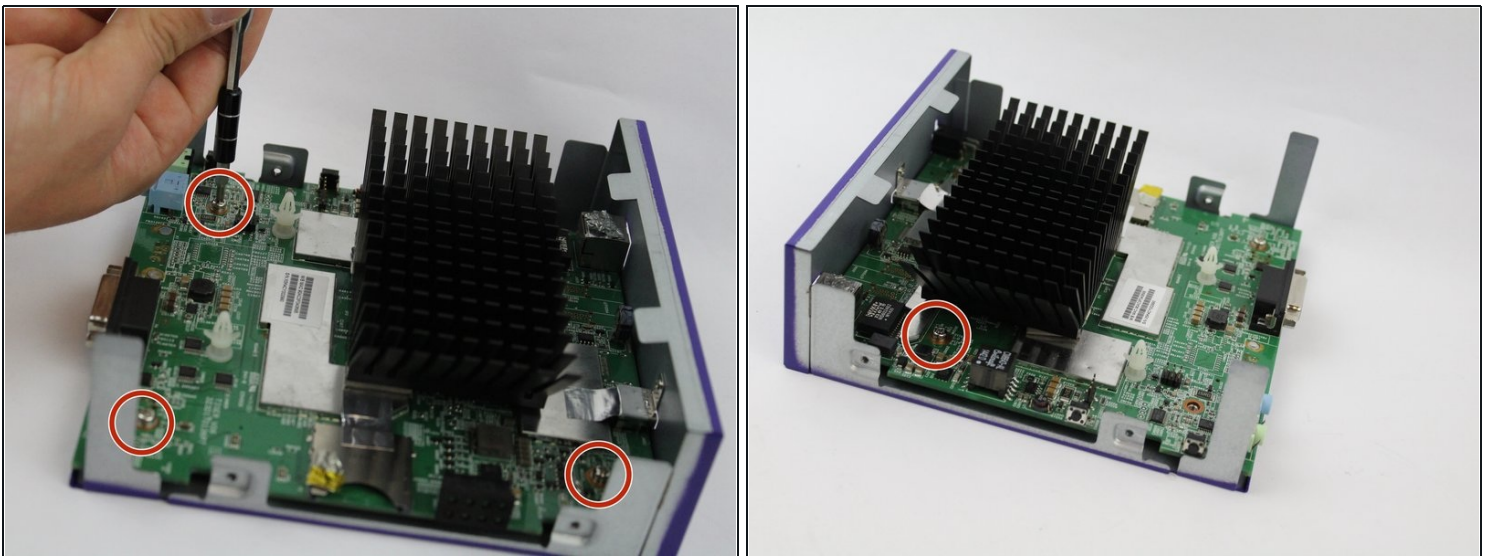


## Step 4



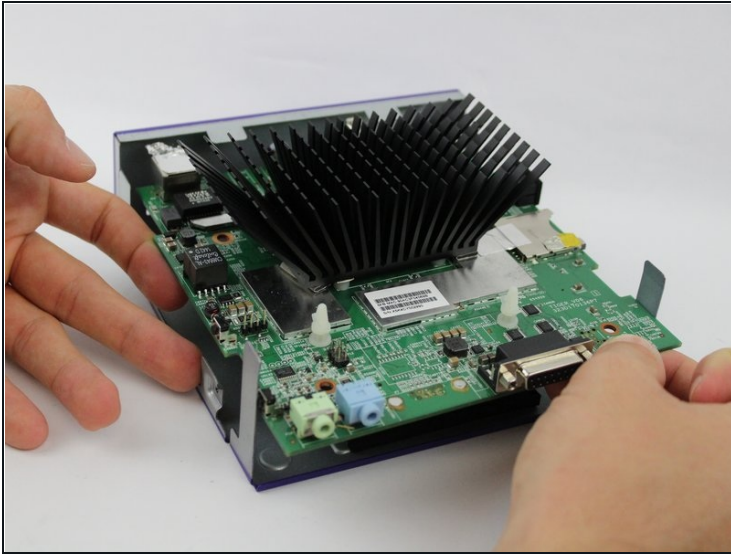
- Slide the body case back away from the bottom.
- Pull up the body case to remove it from the bottom.

## Step 5 — Motherboard Removal



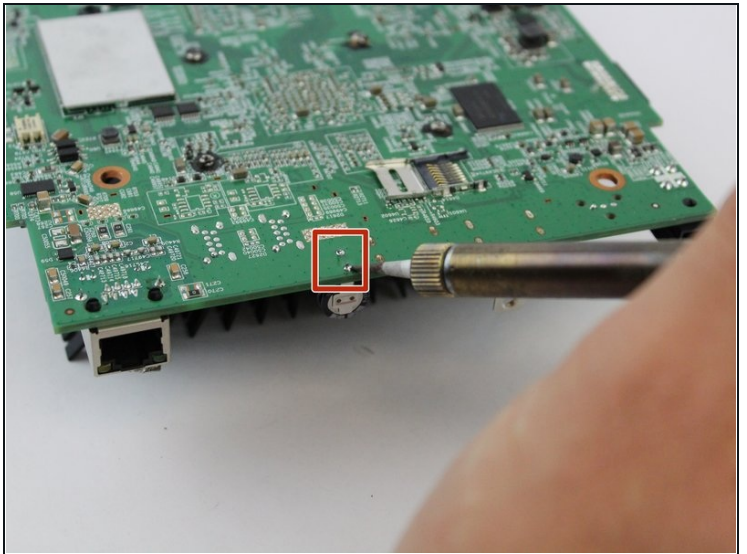
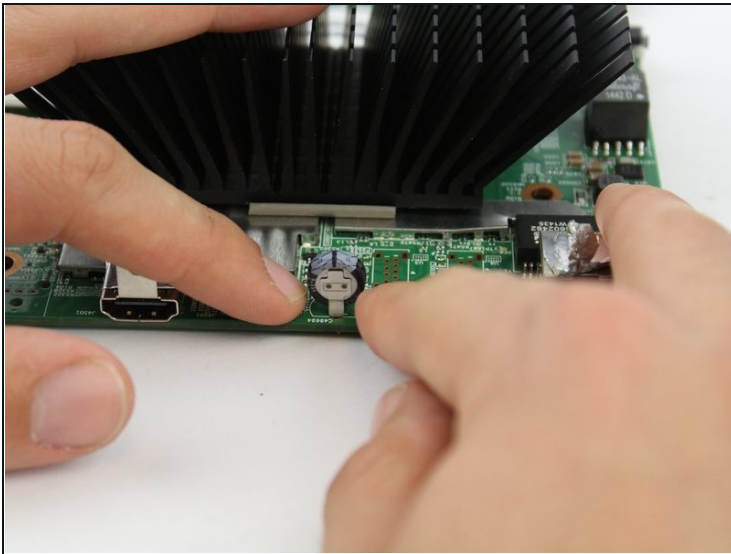
- Remove the four 8mm screws at each corner of the motherboard with a JIS #0 screwdriver.

## Step 6



- Lift the motherboard out of the casing.

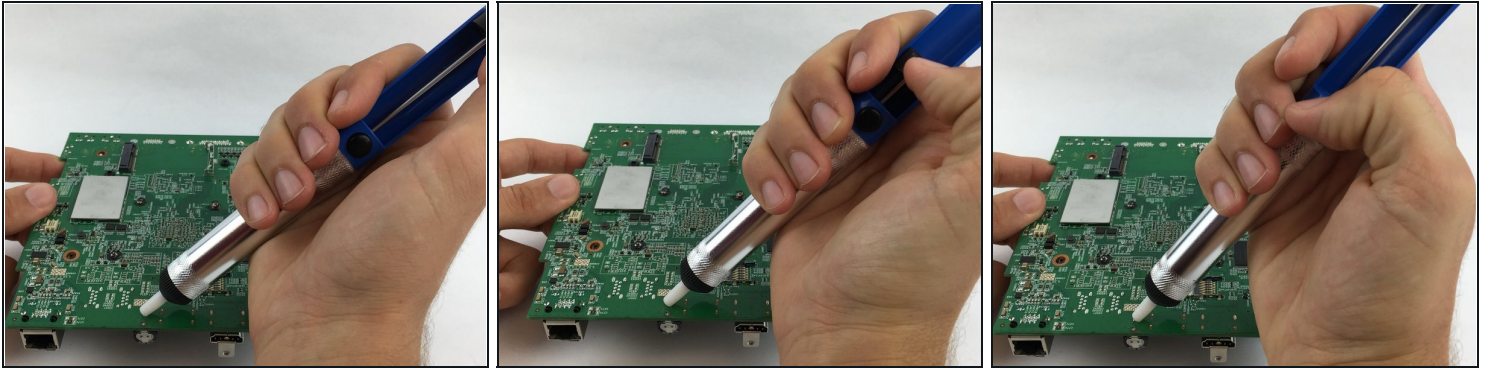
## Step 7 — Battery



- Flip the motherboard over.
- Desolder the two solder joints and remove the melted solder.

⚠ Beware of over heating the soldering kit will damage the logic board.

## Step 8



- Apply the [desoldering pump](#) to remove the melted part from the motherboard (press the button to release it).
- Pull the battery from the motherboard.

---

To reassemble your device, follow these instructions in reverse order.