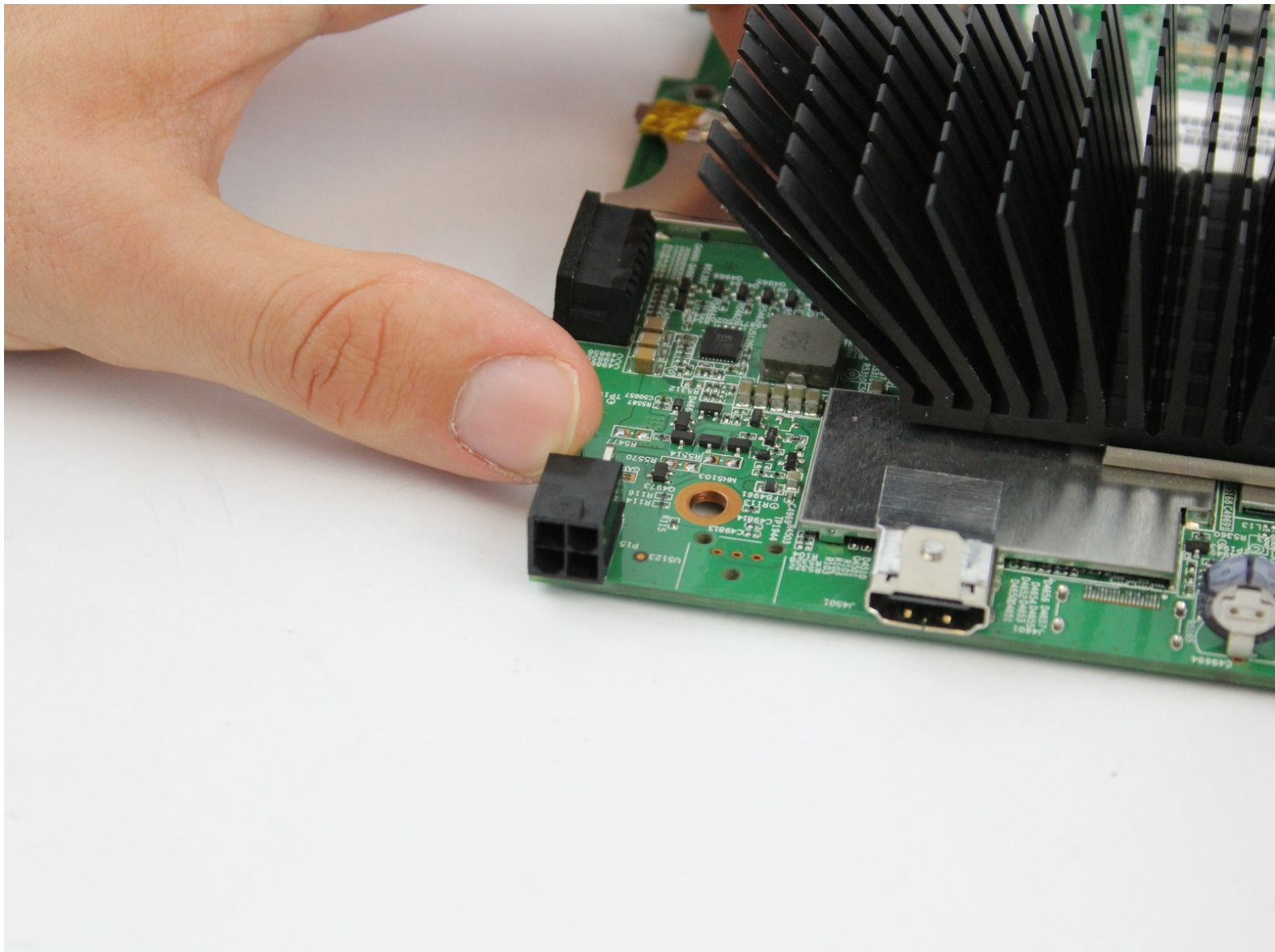




# BrightSign 4K Battery Charging Port Replacement

BrightSign 4k battery not charging.

Written By: Nhi Pham



## INTRODUCTION

If the BrightSign player isn't working, it could be a power issue. This replacement guide will walk you through the process needed to replace the 12V 5A battery charging port on the device.

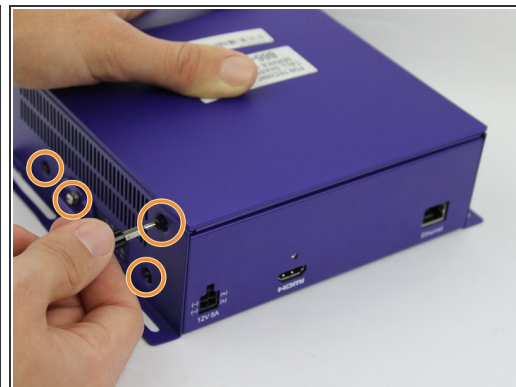
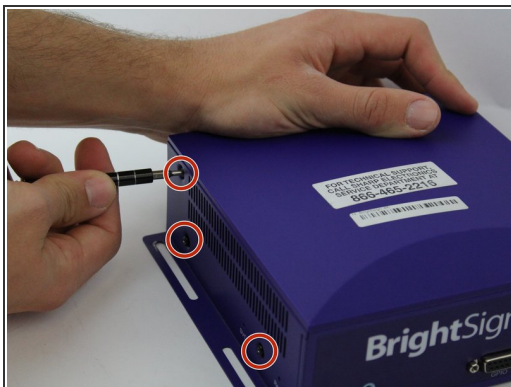
**Tech Tip:** this Replacement guide will require the use of a soldering iron to remove solders, so check out the [soldering guide](#) if you're unfamiliar with the process.



### TOOLS:

- [JIS #0 Screwdriver](#) (1)
  - [Soldering Iron](#) (1)
  - [Desoldering Pump](#) (1)
  - [54 Bit Driver Kit](#) (1)
-

## Step 1 — Outer Shell



- Remove three 8mm screws from the left side of the device.
- Remove four 8mm screws from the right side of the device.

## Step 2



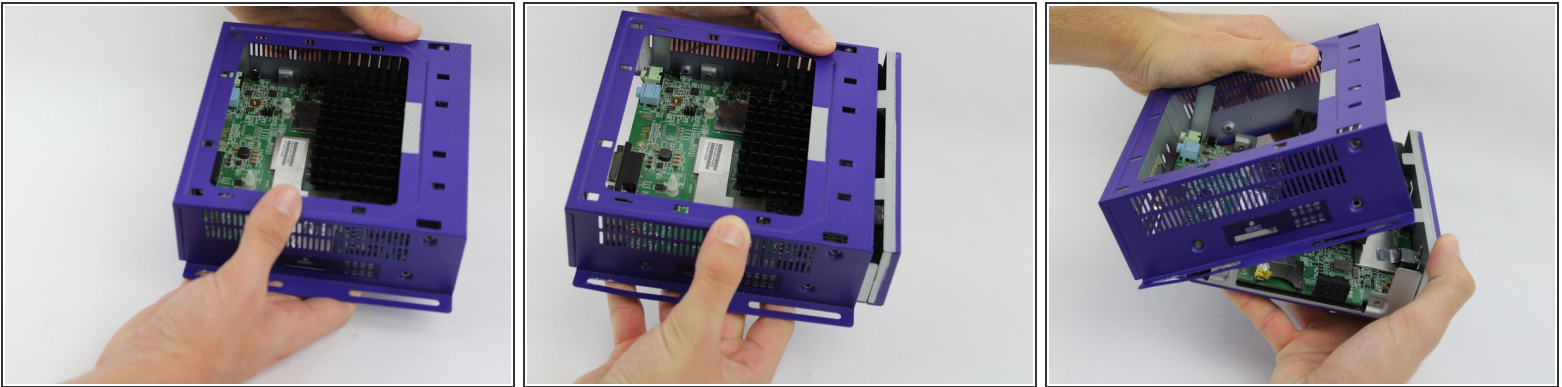
- Apply pressure on the SD card to pop it out of the port.
- Remove the card by pulling it out.

## Step 3



- Press down on the top cover of the device and slid it towards you until you see a slight gap created.
- Lift the top cover off.

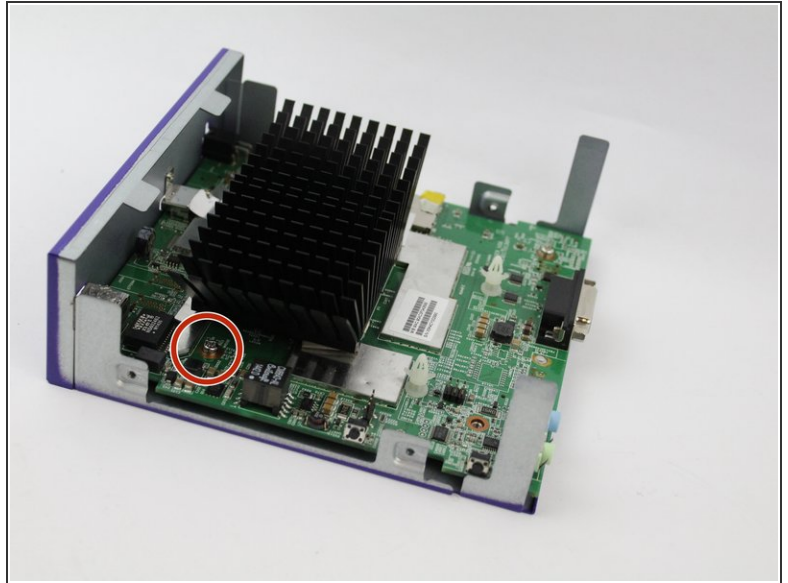
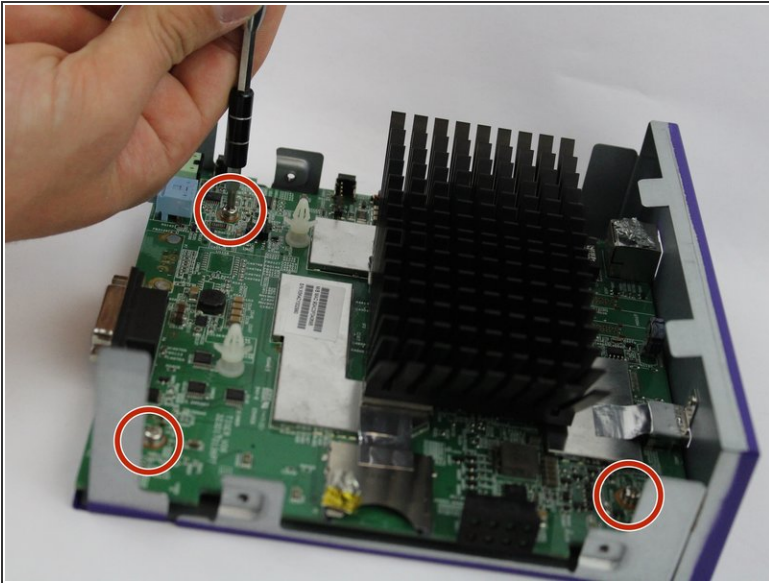
## Step 4



- Slide the body case back away from the bottom.
- Pull up the body case to remove it from the bottom.

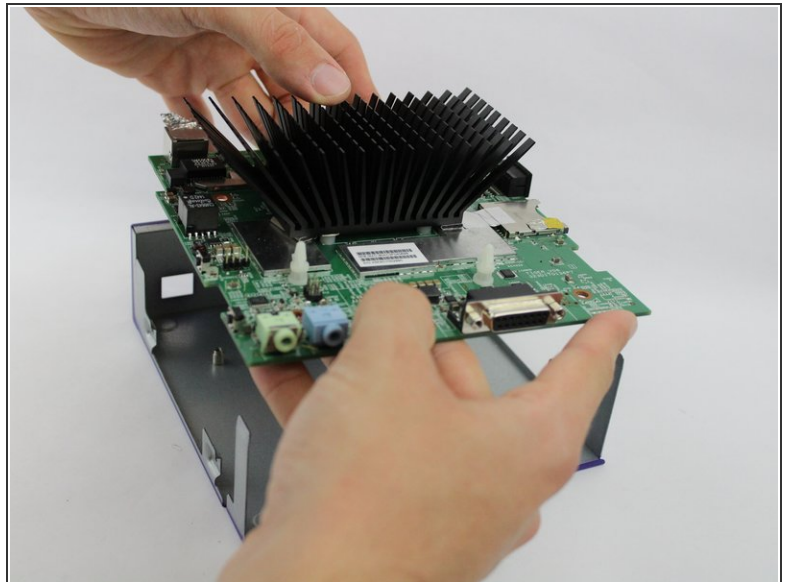
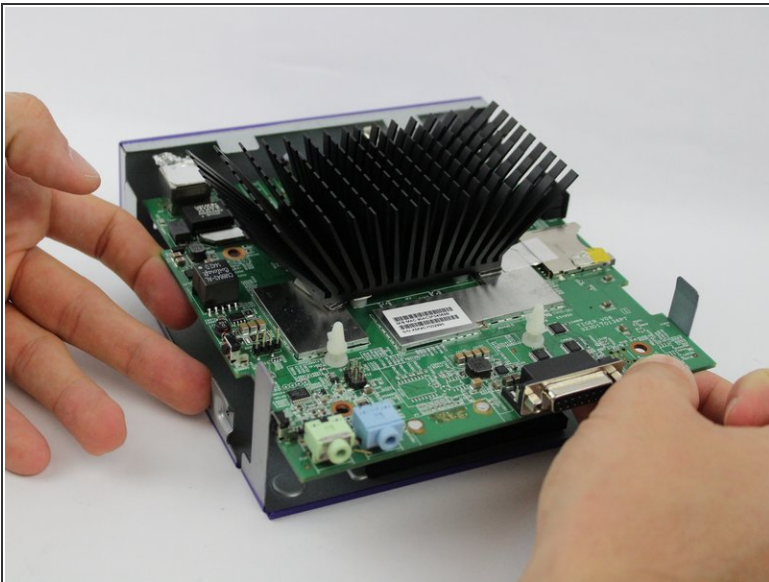


## Step 5 — Motherboard Removal



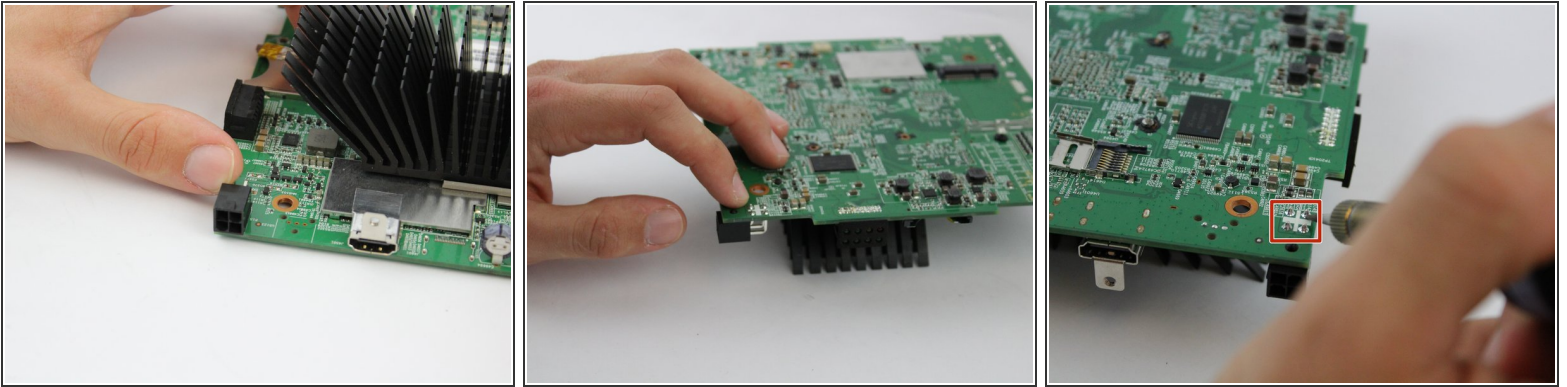
- Remove the four 8mm screws at each corner of the motherboard with a JIS #0 screwdriver.

## Step 6



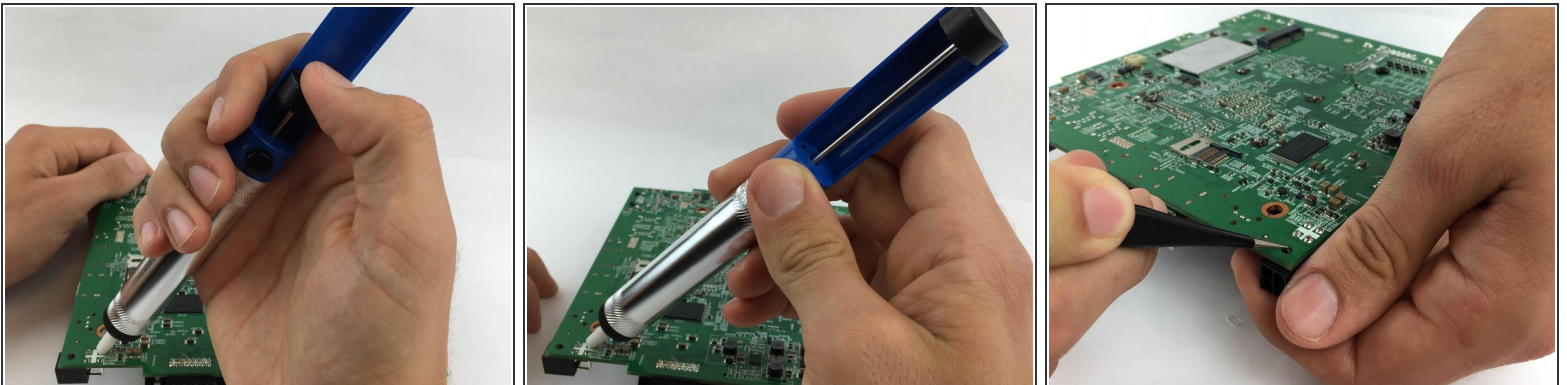
- Lift the motherboard out of the casing.

## Step 7 — Battery Charging Port



- Flip the motherboard over so the heatsink is facing down.
- Desolder the four solder joints and remove the melted solder with the pump.

## Step 8



- Apply the desoldering pump to remove the melted part from the motherboard (press the button to release it).
- Using the tweezers apply pressure to the spade head clip shown.
- Remove the charging port by pulling the piece off.

To reassemble your device, follow these instructions in reverse order.