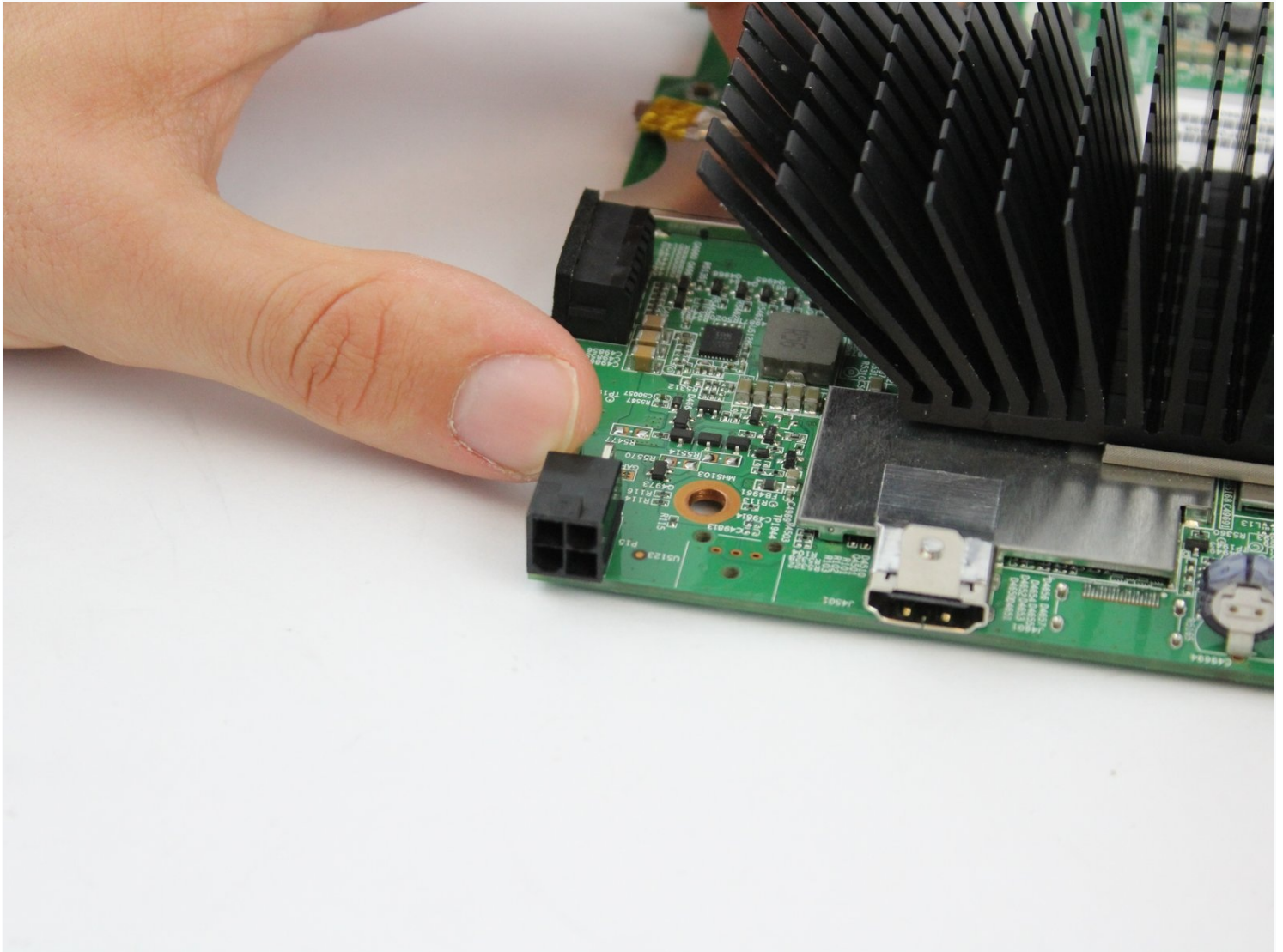




# BrightSign 4K Battery Charging Port Replacement

If the BrightSign player isn't working, it...

Written By: Nhi Pham



# INTRODUCTION

If the BrightSign player isn't working, it could be a power issue. This replacement guide will walk you through the process needed to replace the 12V 5A battery charging port on the device.

**Tech Tip:** this Replacement guide will require the use of a soldering iron to remove solders, so check out the [soldering guide](#) if you're unfamiliar with the process.

---

## TOOLS:

JIS #0 Screwdriver (1)

Soldering Iron (1)

Desoldering Pump (1)

54 Bit Driver Kit (1)

---

## Step 1 — Outer Shell



- Remove three 8mm screws from the left side of the device.
- Remove four 8mm screws from the right side of the device.

## Step 2



- Apply pressure on the SD card to pop it out of the port.
- Remove the card by pulling it out.

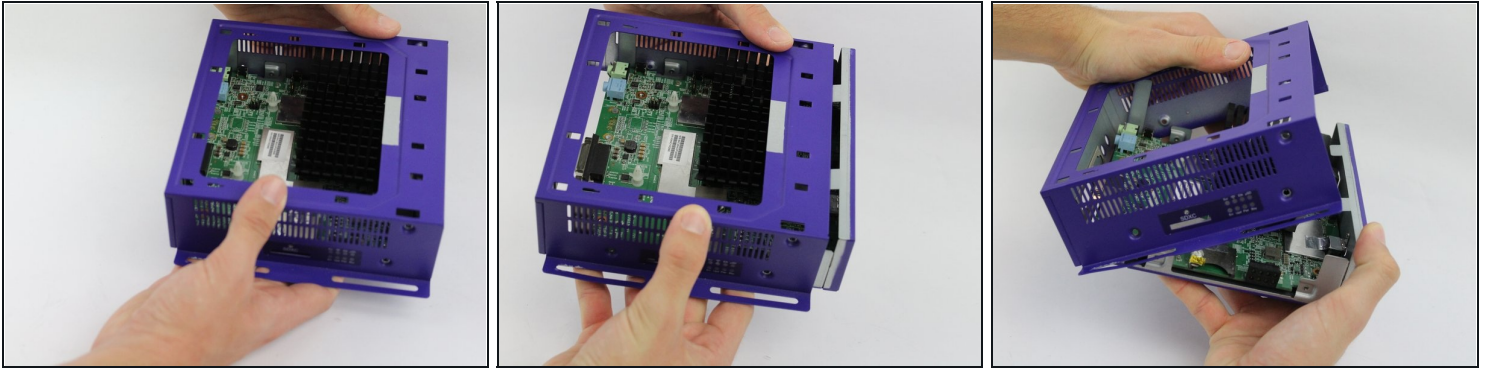
## Step 3



- Press down on the top cover of the device and slid it towards you until you see a slight gap created.
- Lift the top cover off.

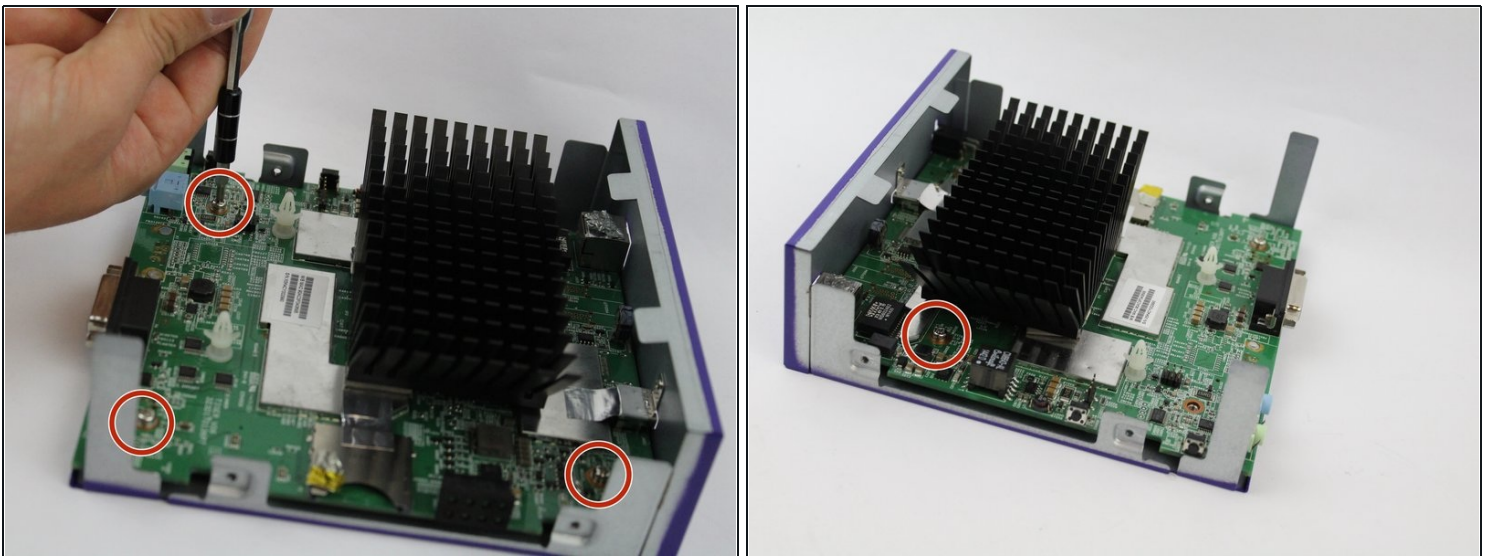


## Step 4



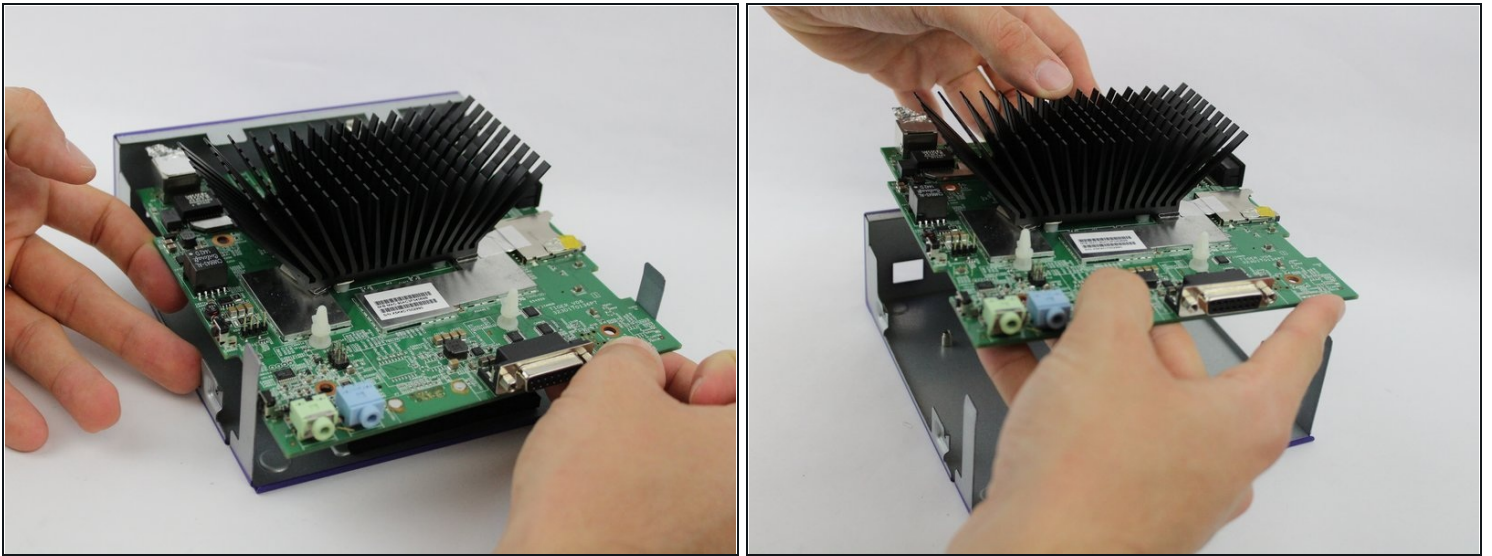
- Slide the body case back away from the bottom.
- Pull up the body case to remove it from the bottom.

## Step 5 — Motherboard Removal



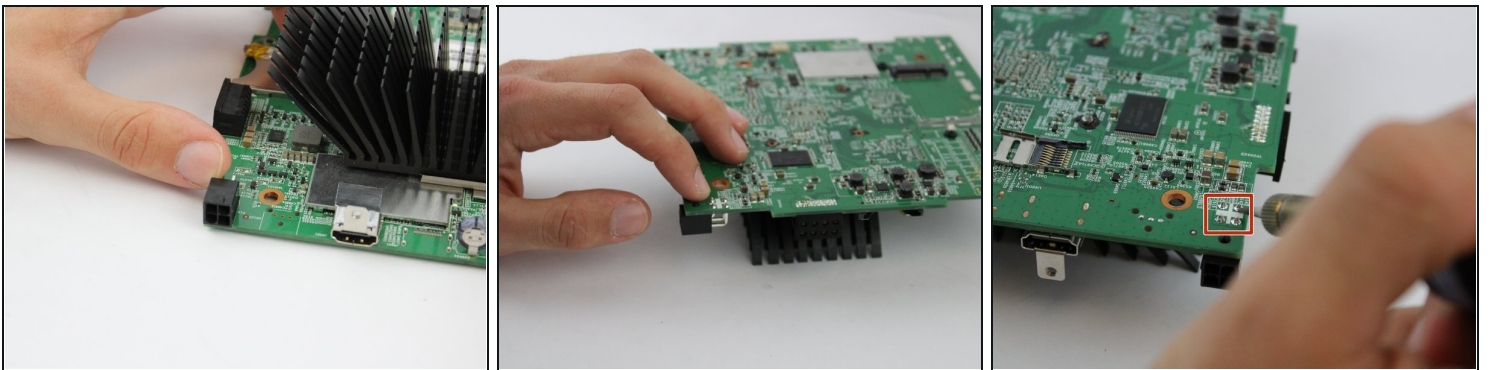
- Remove the four 8mm screws at each corner of the motherboard with a JIS #0 screwdriver.

## Step 6



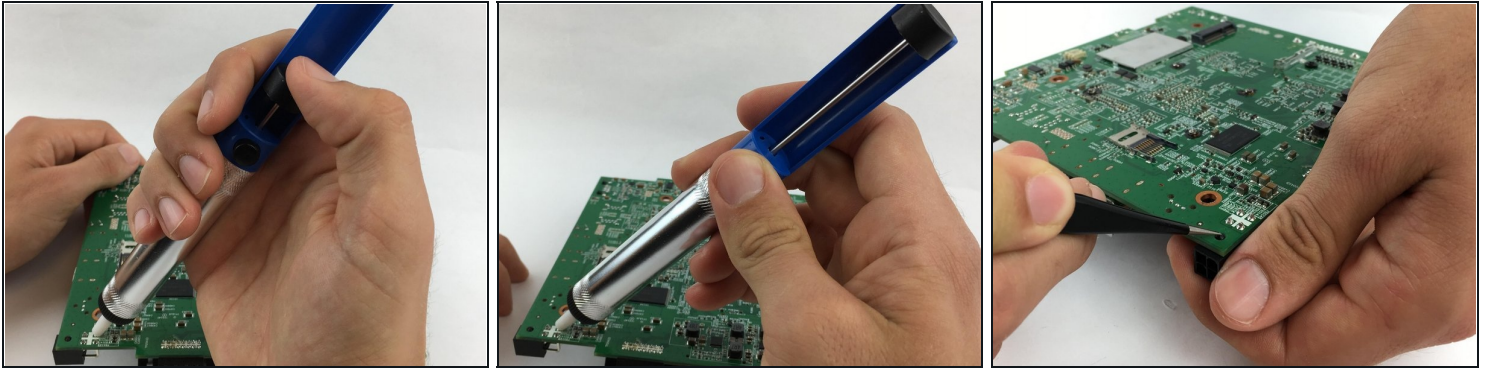
- Lift the motherboard out of the casing.

## Step 7 — Battery Charging Port



- Flip the motherboard over so the heatsink is facing down.
- Desolder the four solder joints and remove the melted solder with the pump.

## Step 8



- Apply the [desoldering pump](#) to remove the melted part from the motherboard (press the button to release it).
- Using the tweezers apply pressure to the spade head clip shown.
- Remove the charging port by pulling the piece off.

---

To reassemble your device, follow these instructions in reverse order.