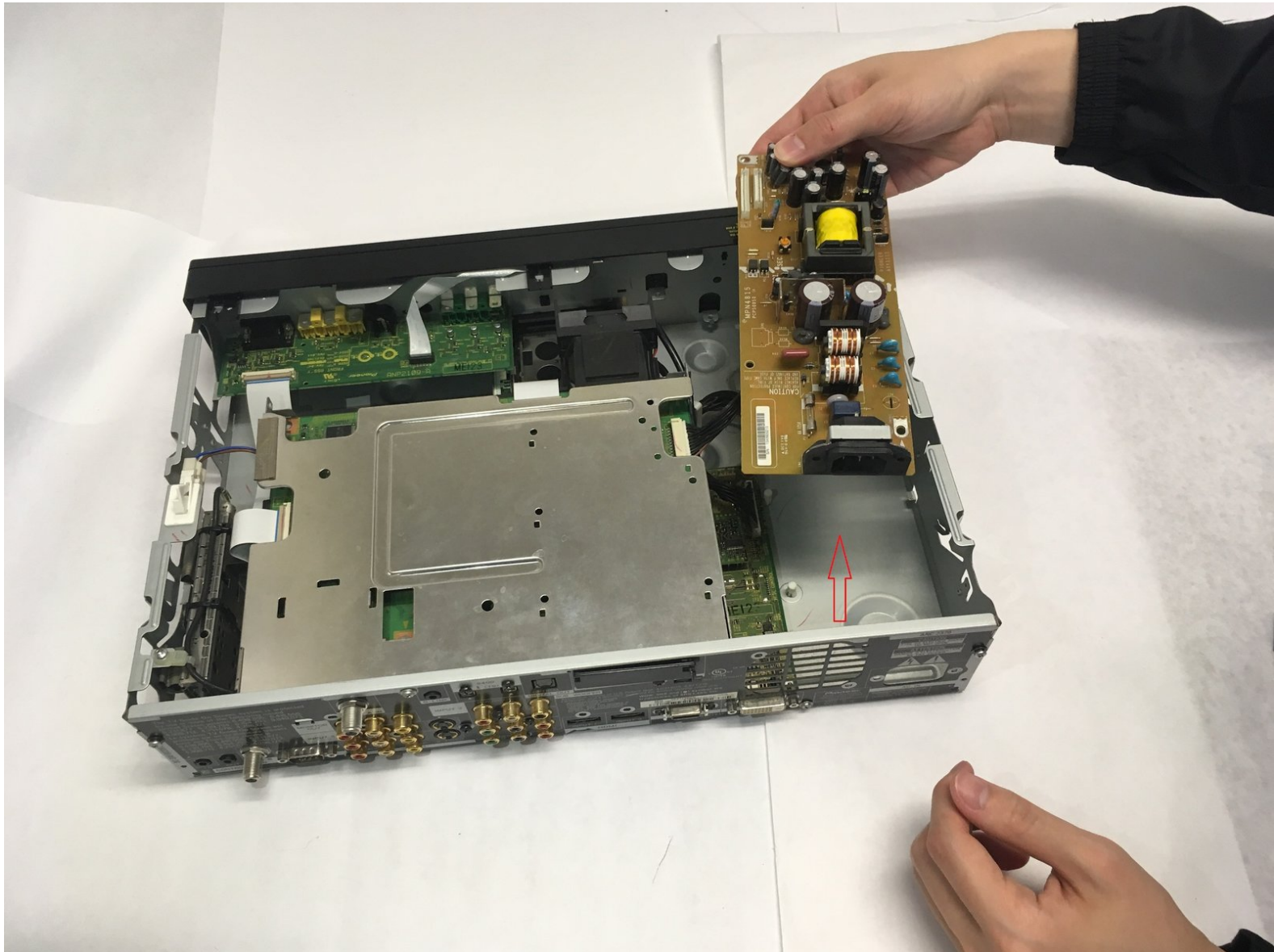




Pioneer Elite PRO-RO6U Power Supply Board Replacement

Replacing the power supply circuit board may be necessary if the media receiver fails to power on.

Written By: Cody Carter



INTRODUCTION

Water damage or a faulty electrical opponent may make the Pioneer Elite Pro-R06U shut off intermittently or fail to power on. Removing the faulty board and installing a new one should get the receiver back up and running.

TOOLS:

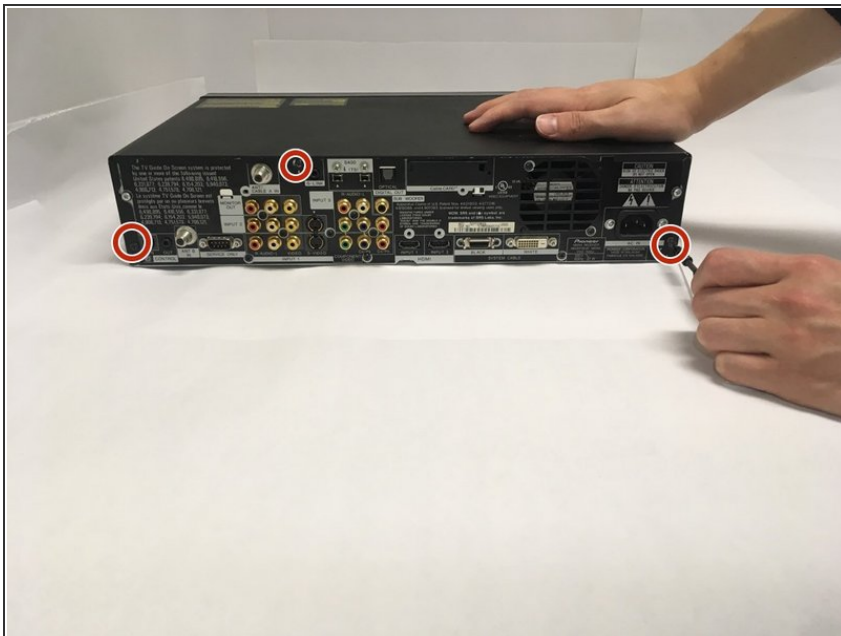
- [Phillips #1 Screwdriver](#) (1)
-

Step 1 — Power Supply Board



- Remove the two 6.4 mm Phillips screws on each side of the device's casing.

Step 2



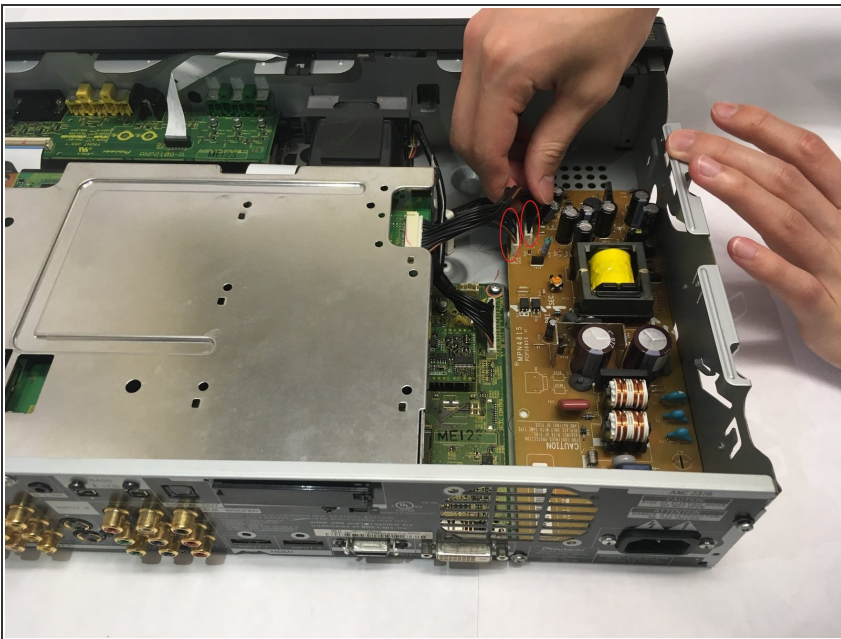
- Remove the three 6.5 mm Phillips screws on the back of the device casing.

Step 3



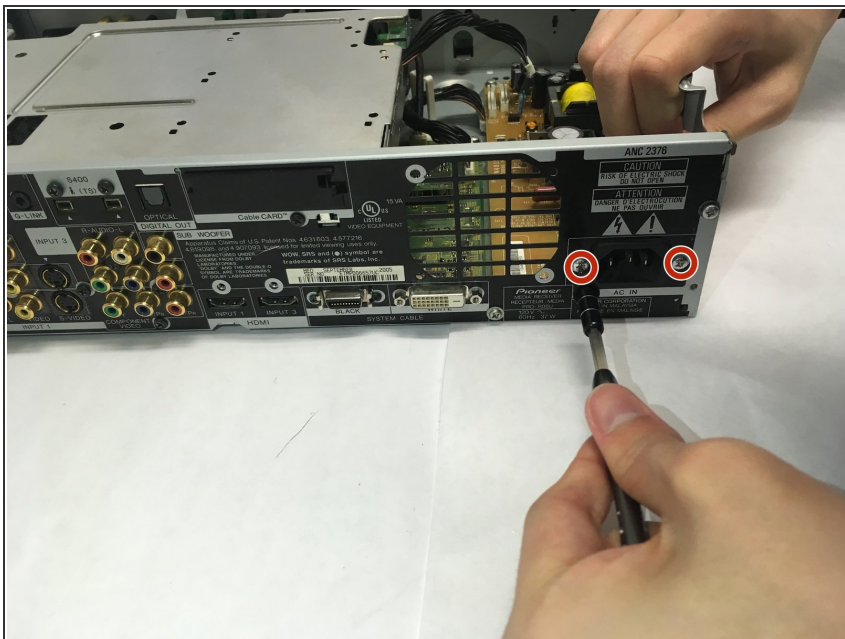
- Grip the front panel in one hand and the back of the casing in the other. Pull the casing back, and slide it up and away from the inner box.

Step 4



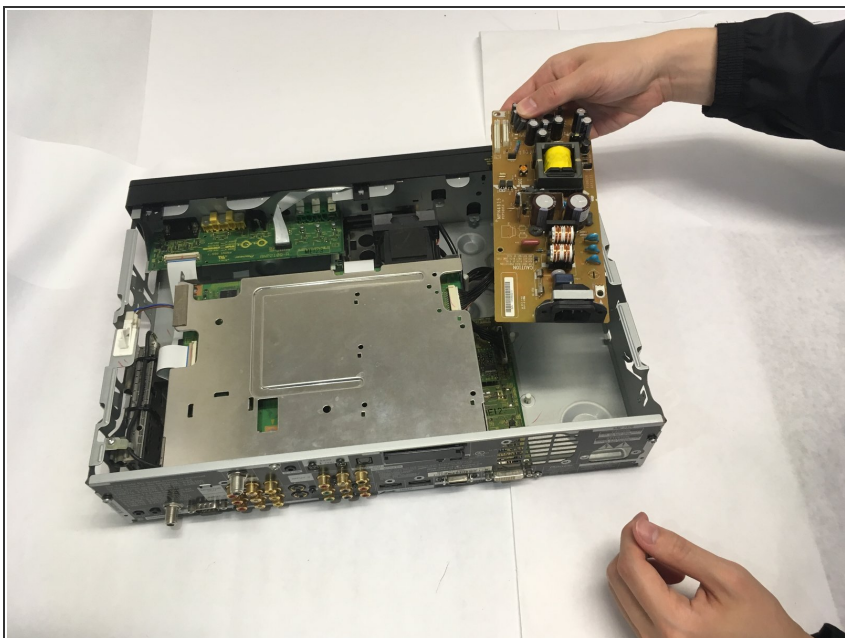
- Gently pull upward and unplug cables D4 and D5.

Step 5



- Remove the two 7/16 inch Phillips screws to the left and right of the power supply port.
- Remove three 5/16 inch Phillips screws from the corners of the board.

Step 6



- Remove the power supply board by pulling it toward the interior of the device then lifting.

To reassemble your device, follow these instructions in reverse order.