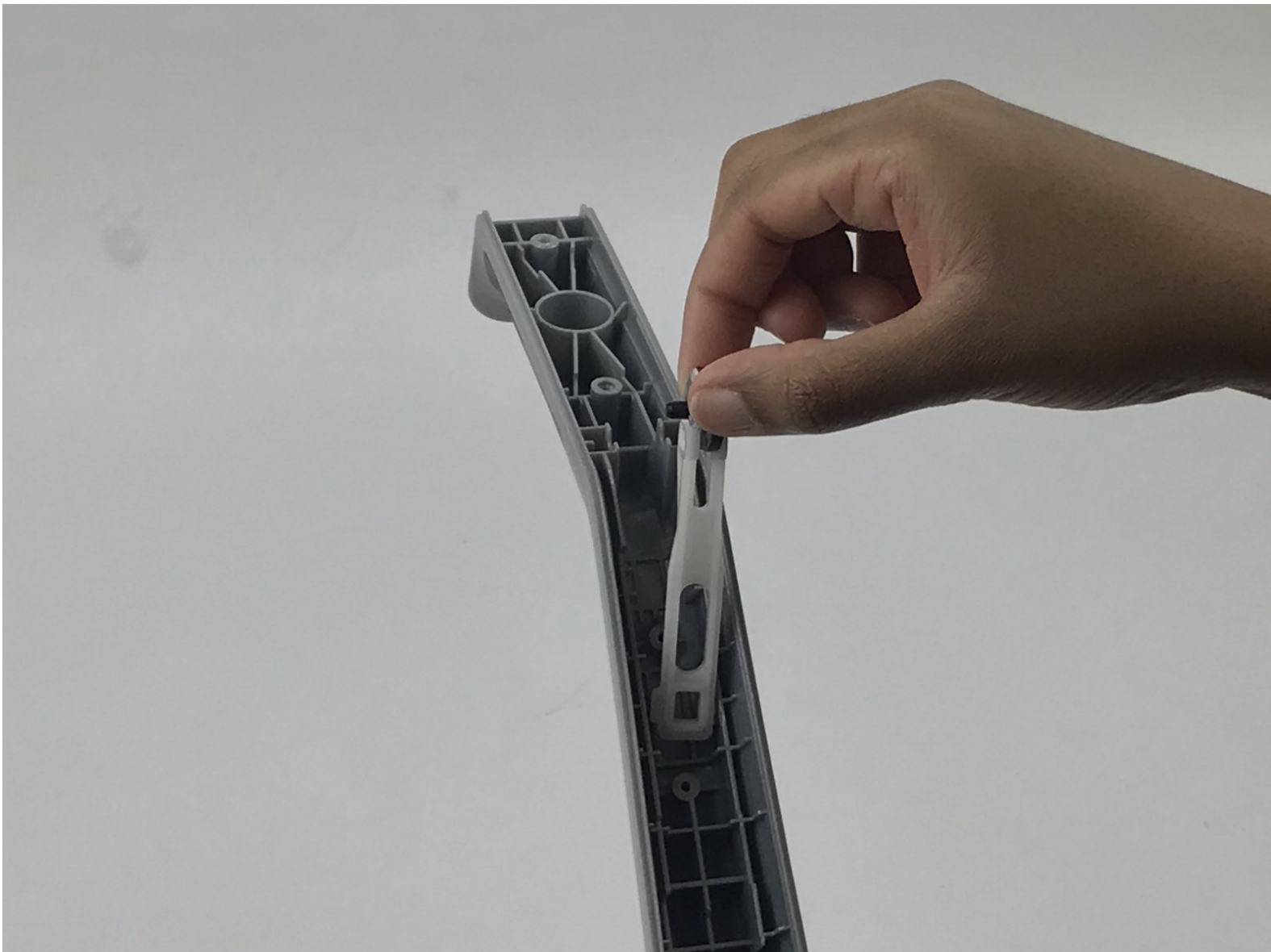




# Hoover LiNX Power Button Replacement

Replacing the power button in the handle of the Hoover LiNX cordless vacuum.

Written By: Mark Nelson



## INTRODUCTION

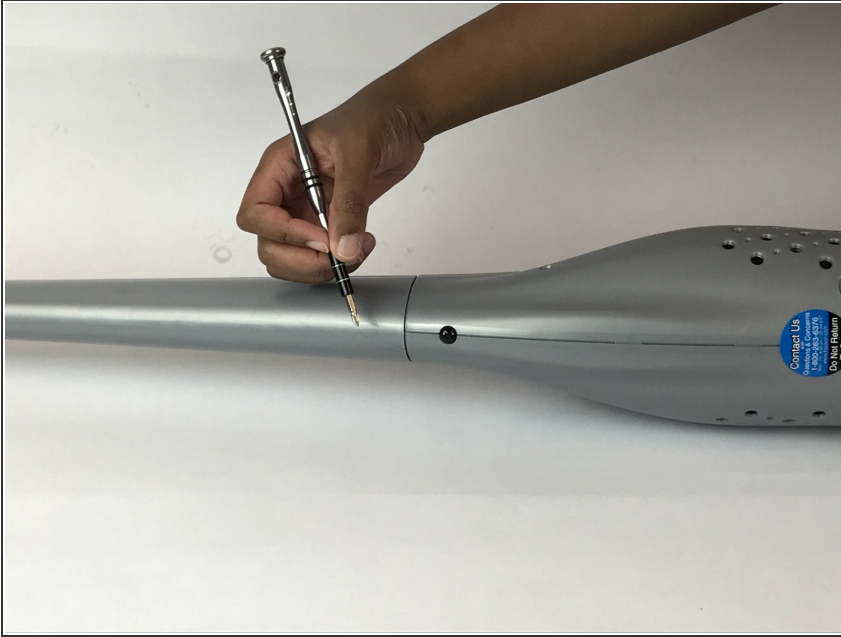
This guide will show you how to replace the internal switch inside the handle. This guide will be identical to the motherboard guide with a few extra steps. This would be needed if the power button is no longer working in the handle.

---

### TOOLS:

- [Phillips #1 Screwdriver](#) (1)
  - [iFixit Opening Tools](#) (1)
-

## Step 1 — Hoover LiNX Handle Teardown



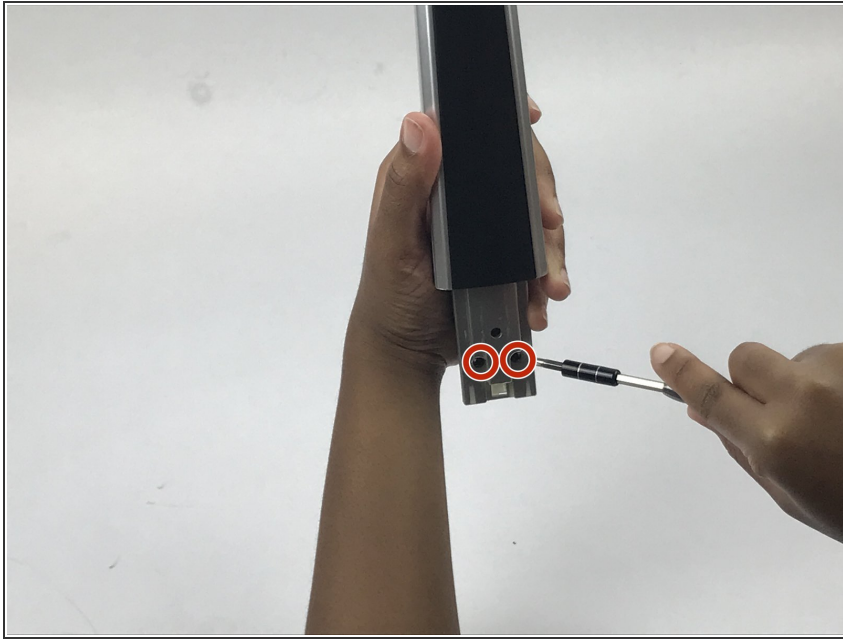
- Remove the single 15mm Phillips #1 screw from the handle.

## Step 2



- Remove the handle by pulling it up.

### Step 3



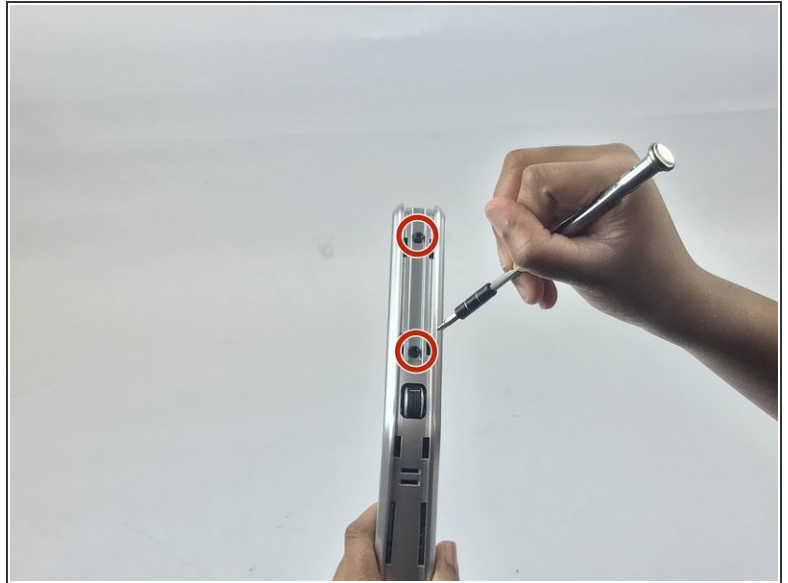
- Remove two 15mm Phillips #1 screws from the handle.

### Step 4



- Use a plastic opening tool to carefully pry the black cover off of the handle.

## Step 5



- Remove five 15mm Phillips #1 black screws from the handle.

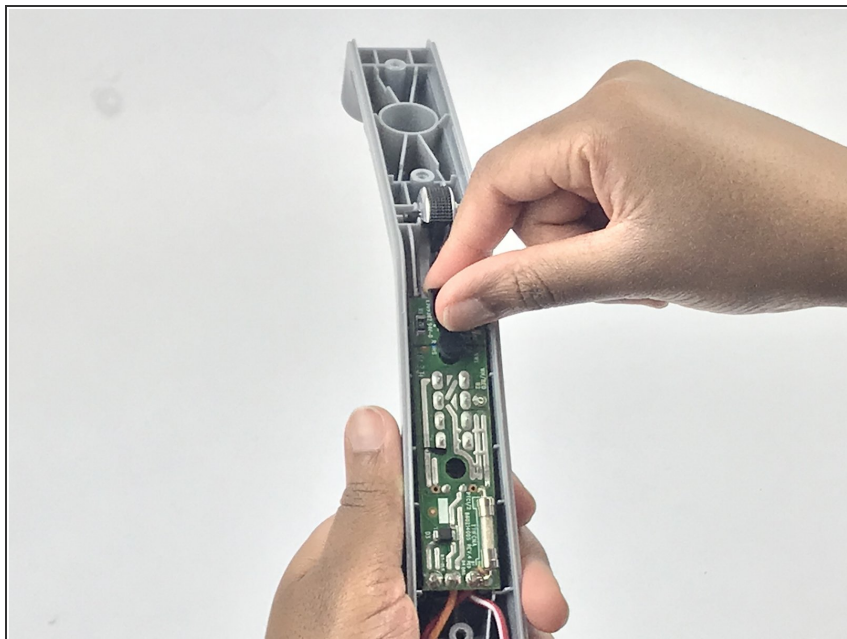
## Step 6



- Remove the silver plastic cover using the plastic opening tool.



## Step 7 — The Motherboard Inside The Handle



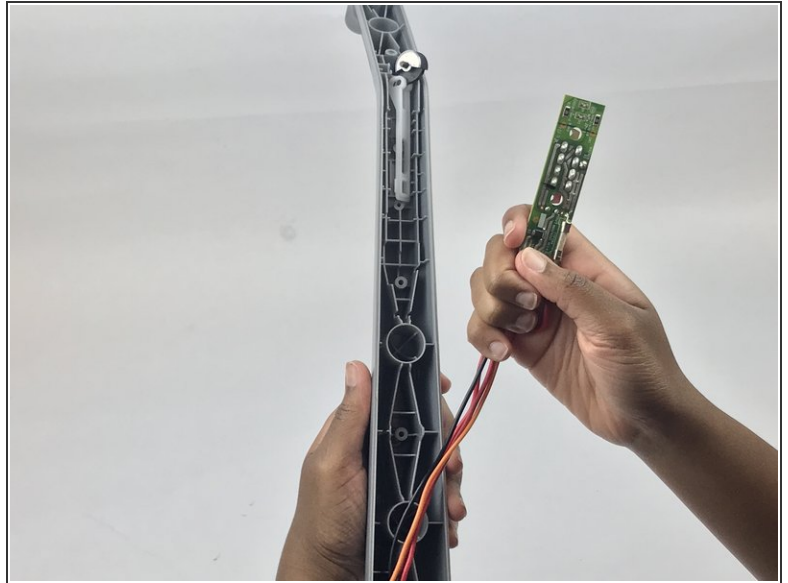
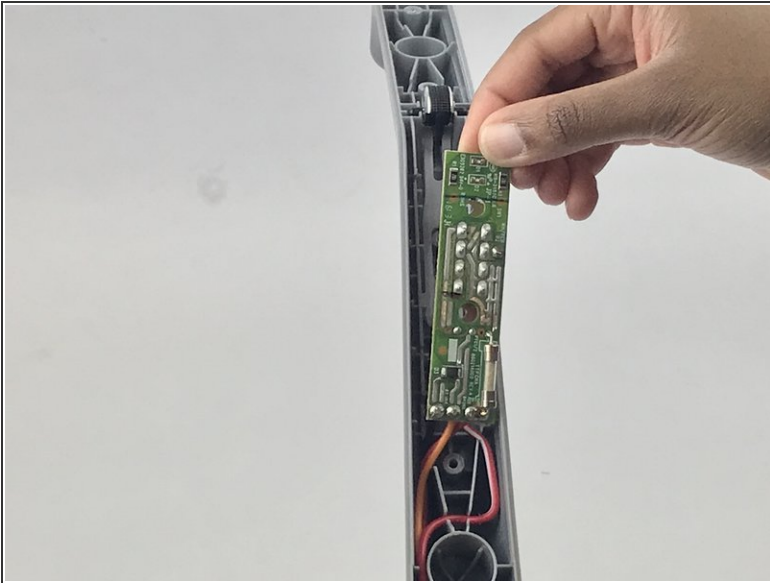
- Remove the black rubber cover from the motherboard.

## Step 8



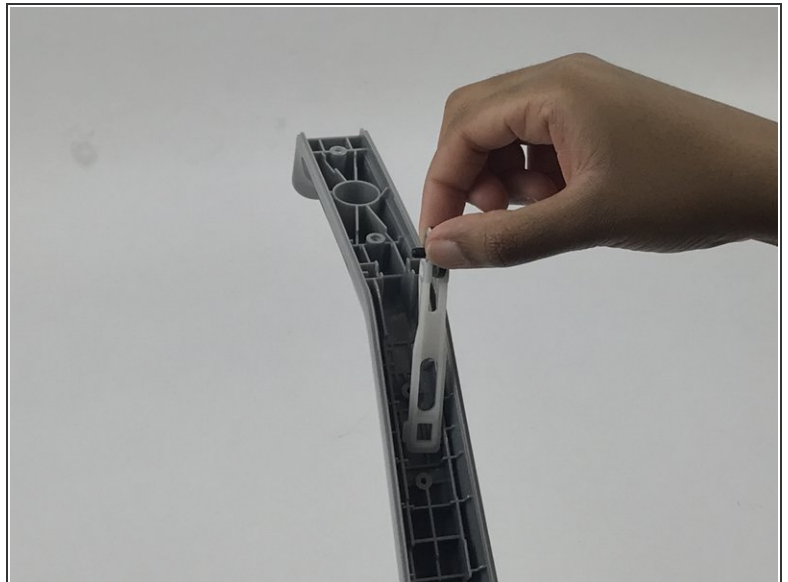
- Remove two 8mm Phillips #1 screws from the motherboard.

## Step 9



- Carefully pull the motherboard out with its attached wires.

## Step 10 — Power Button



- Replace the power button.

To reassemble your device, follow these instructions in reverse order.