



# Hoover LiNX Replace The Motor Replacement

Replace a broken or malfunctioning motor in the Hoover LiNX.

Written By: Sara Vlhova



---

## INTRODUCTION

This guide will show you how to replace the motor that turns the brush roller in the nozzle. You might need to do this if the brush roll is no longer spinning. Make sure that the device is turned off and the battery removed from it.

---

### TOOLS:

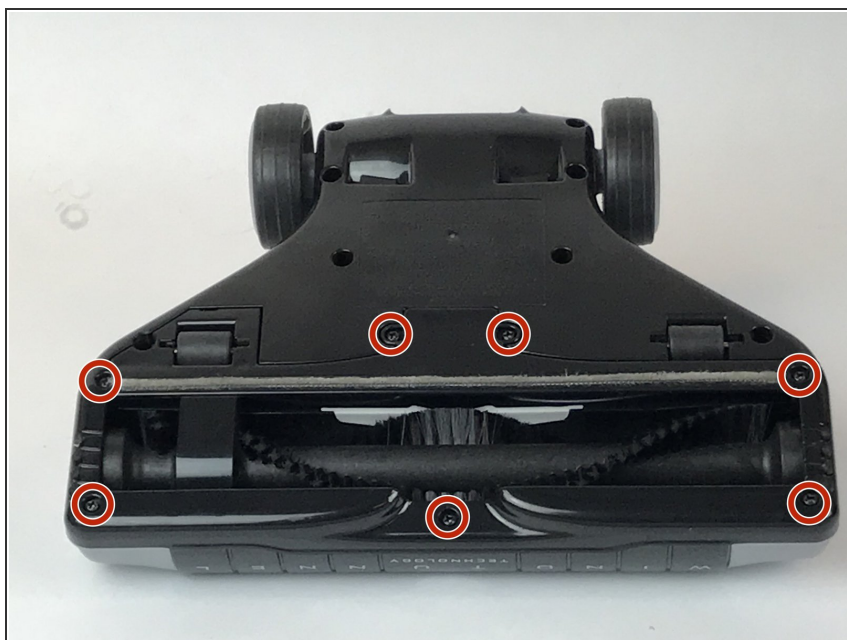
- [Phillips #1 Screwdriver](#) (1)
-

## Step 1 — Replace The Motor



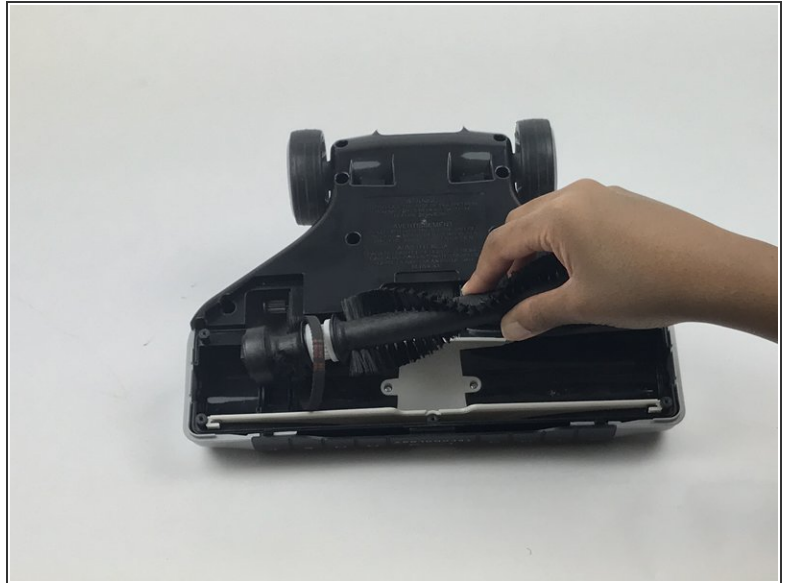
- Detach the rolling assembly from the body by pushing the button found at the base.

## Step 2



- Remove the seven 7.5mm Phillips #1 screws from the brush retainer.

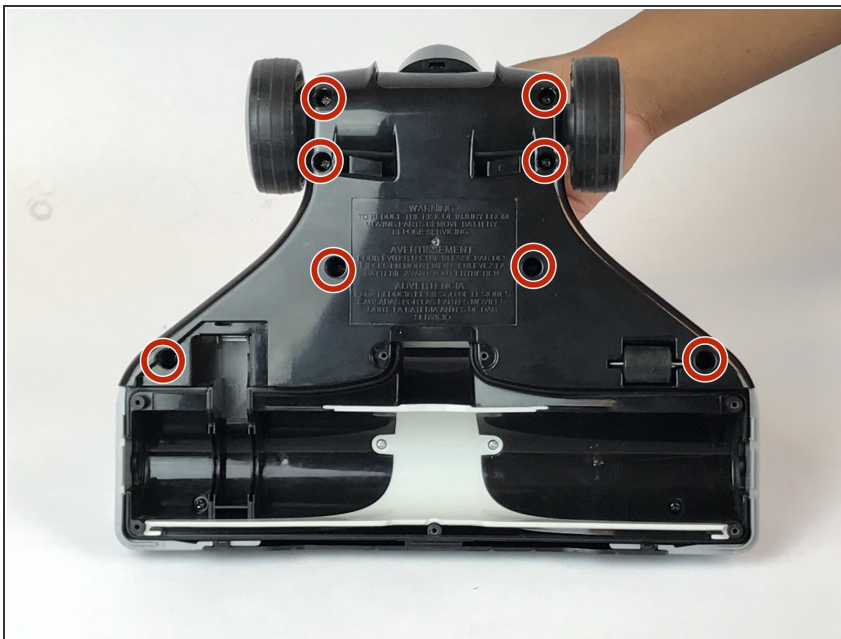
### Step 3



- Remove the brush and retainer from the rolling assembly.

**i** The brush will need to be disconnected from the belt.

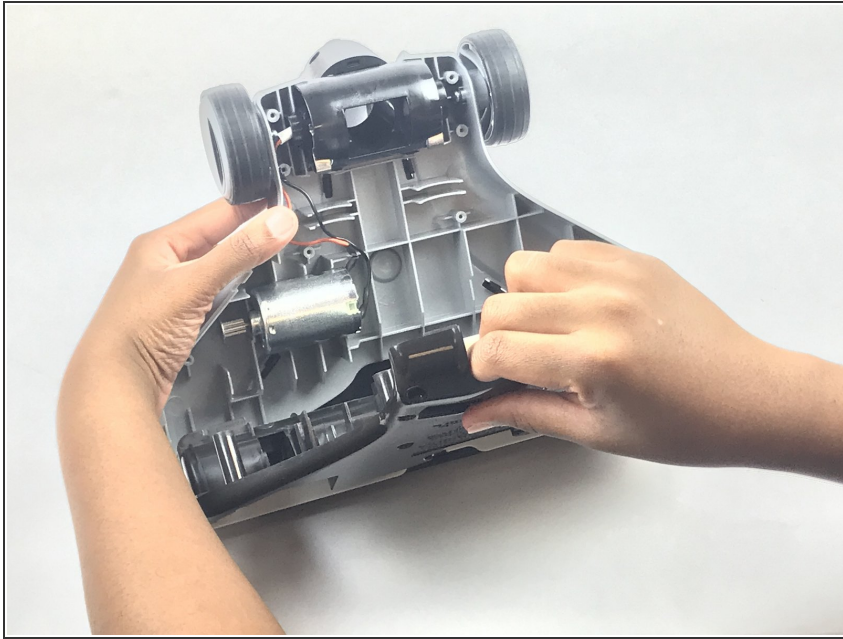
### Step 4



- Remove the eight 4mm Phillips #1 screws from the bottom panel.

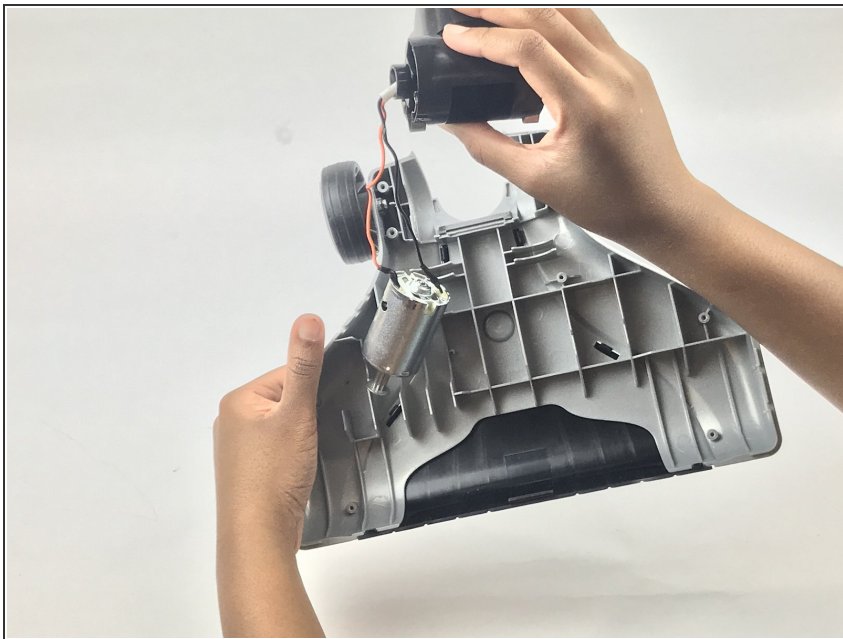


## Step 5



- Remove the bottom panel.

## Step 6



- Remove the motor.

To reassemble your device, follow these instructions in reverse order.