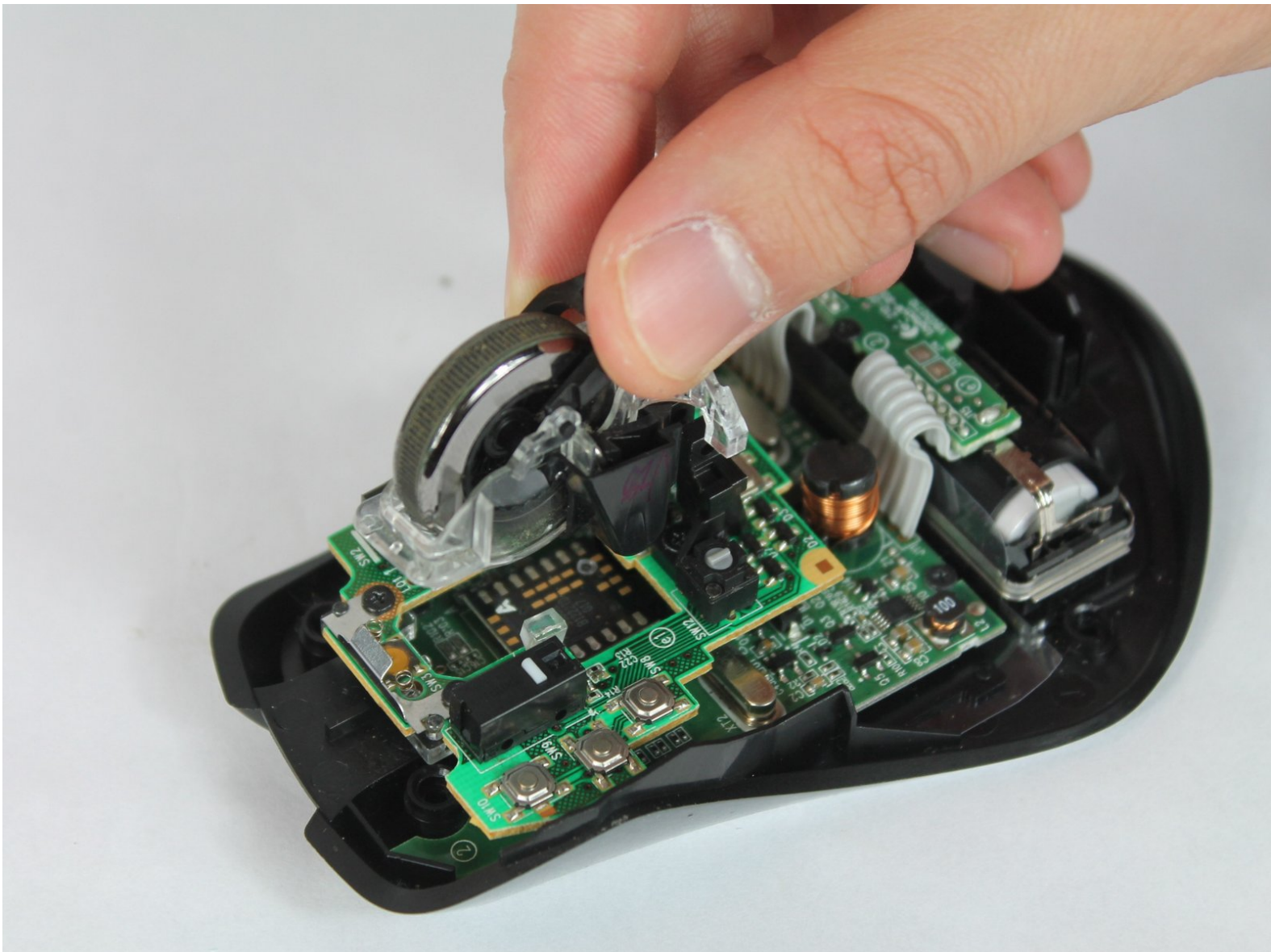




# Logitech G700s Scroll Wheel Replacement

This guide is for replacing the Scroll wheel of you Logitech G700s

Written By: Chase Tisinger



# INTRODUCTION

This guide will help assist replacing the scroll wheel in you Logitech G700s.



## TOOLS:

- [iFixit Opening Tools](#) (1)
- [Magnetic Pickup Tool](#) (1)
- [Tweezers](#) (1)



## PARTS:

- [Replacement G700s Scroll Wheel](#) (1)

## Step 1 — Top Case Replacement



- Remove the batteries from the mouse.
- Use a plastic opening tool to peel up the four mouse feet.

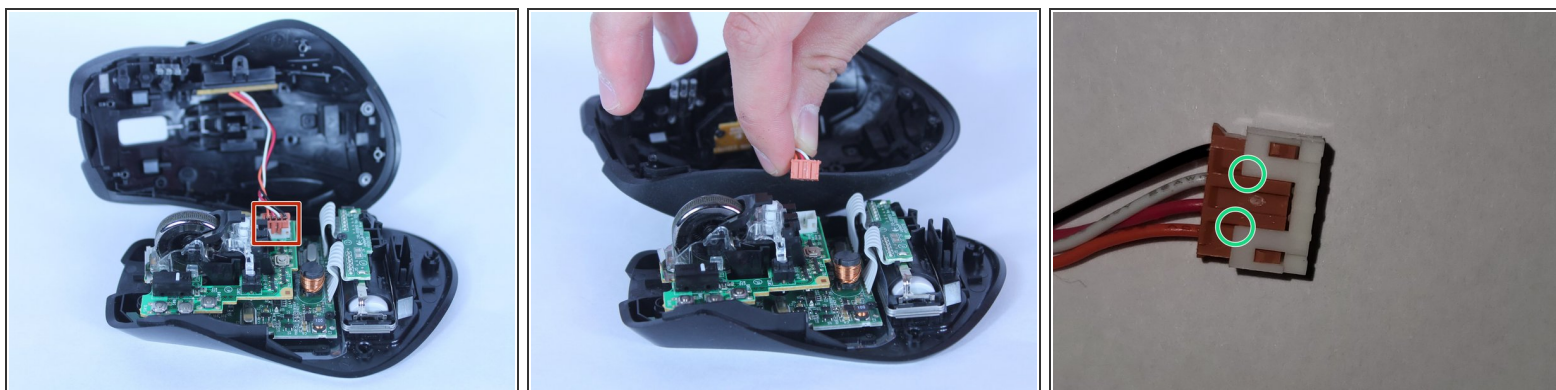
## Step 2



- Remove the five 5.5mm Phillips #00 screws found underneath the mouse feet.

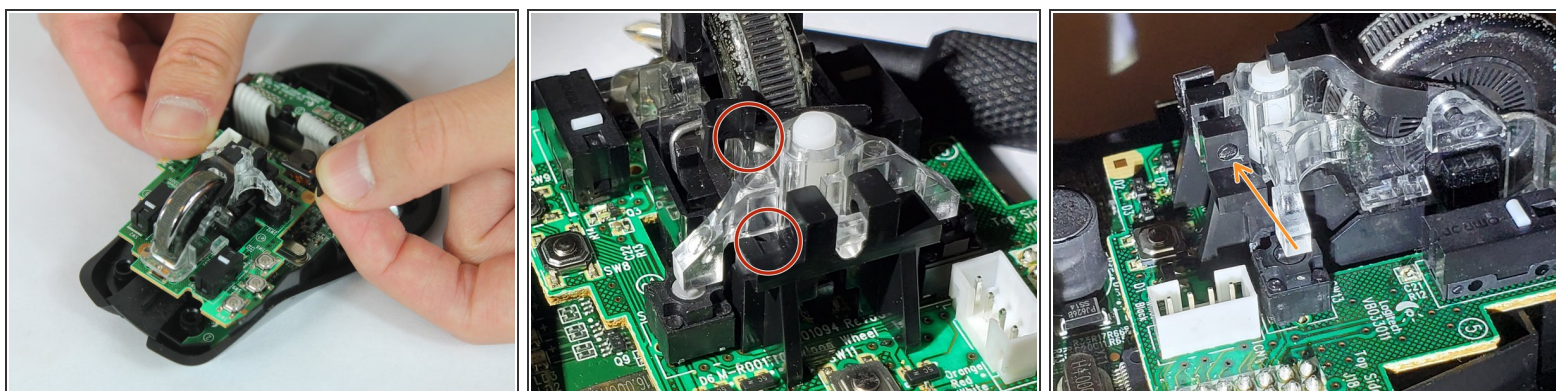


## Step 3



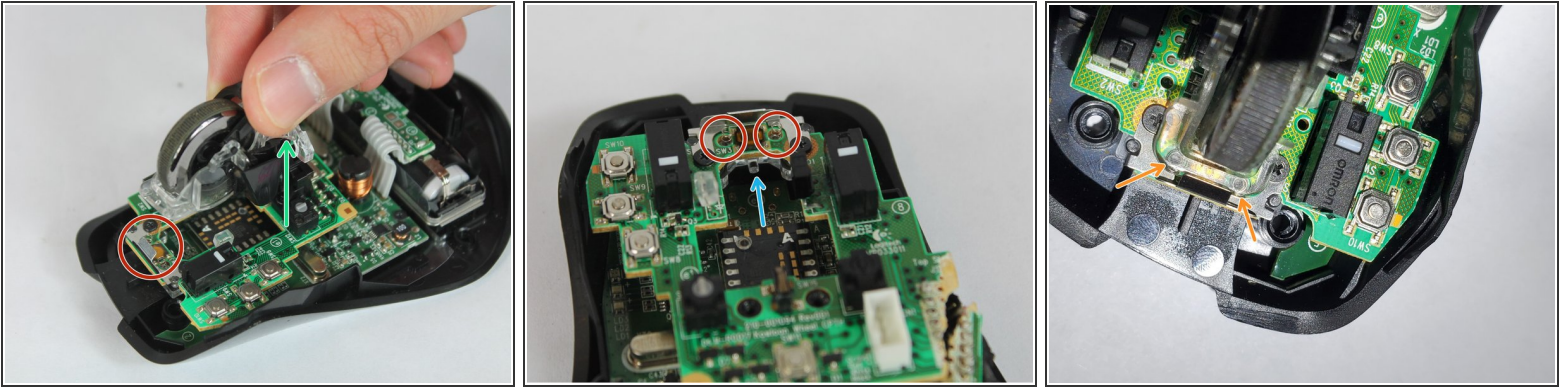
- Pull the top of the mouse off of the bottom half.
  - ⓘ There's a wire connecting the two halves.
- Unplug the programmable buttons from the motherboard.
  - ⓘ The white pin housing on the motherboard may come off while unplugging. In that case, use tool to pry between at location indicated to separate them and insert the housing back onto the motherboard.

## Step 4 — Scroll Wheel



- Remove the black pin that holds the scroll wheel to the motherboard.
  - The protrusion on the bottom side of the pin clicks into the dimple on the base.
  - I find the easiest way to remove the pin is to use the pointy end of the spudger to push on this end of the pin.

## Step 5



- First, lift the assembly from the back (green arrow), while keeping the front clear plastic part resting on the springs (red circle).
- Then, while pulling it toward the back *very slightly*, carefully lift the front part off the springs.
  - ❗ It might jump a little bit from the springs.
  - The clear front part has a hole that attaches onto a clear nibble just below the bracket (blue arrow in second picture) for the scrollwheel to pivot left and right for the left and right scroll function.
  - Though the pivot point isn't attached too deeply. When reassembling, align the circular marks in the front to the springs, then press the back side down into the holder and it will self align.
- ⚠ Be careful not to lose the two small springs! They are magnetic and could attach to any magnetic tip screw driver!
- ❗ Leaving a magnet on the metal clip might help to retain the springs, though I haven't tried it.
- Remove the springs and keep them safe.

To reassemble your device, follow these instructions in reverse order.