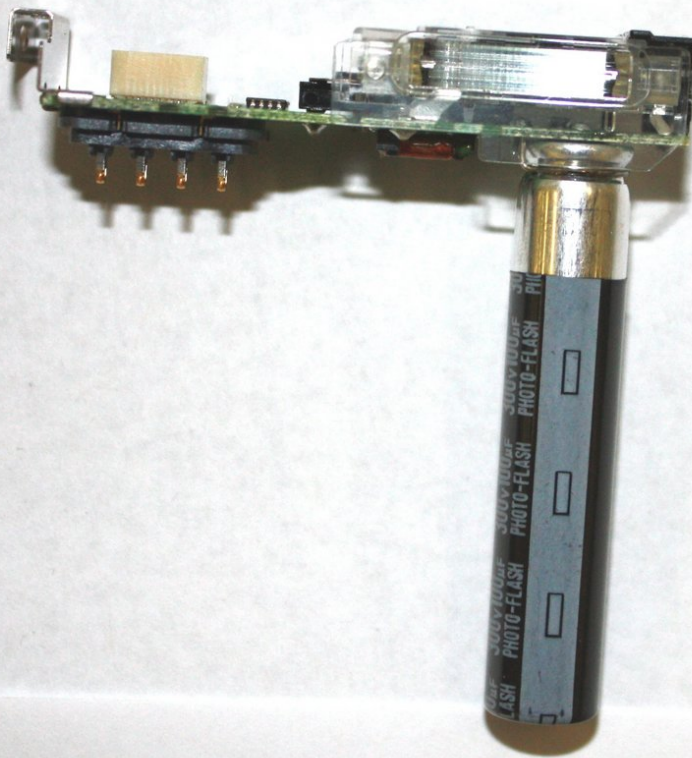




Panasonic Lumix DMC-ZS6 Flash Assembly Replacement

How to replace a Panasonic Lumix DMC-ZS6 flash assembly.

Written By: Derrick Thompson



INTRODUCTION

This guide will teach you step by step on how to take apart the Panasonic Lumix DMC-ZS6 and locate the broken or malfunctioning flash component.



TOOLS:

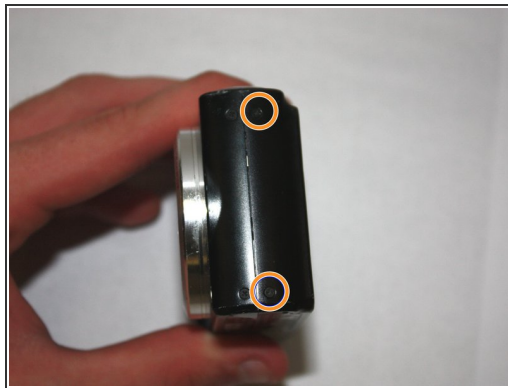
- [Phillips #000 Screwdriver](#) (1)
 - [Spudger](#) (1)
-

Step 1 — Flash Assembly



- Remove the battery and the SD card.

Step 2



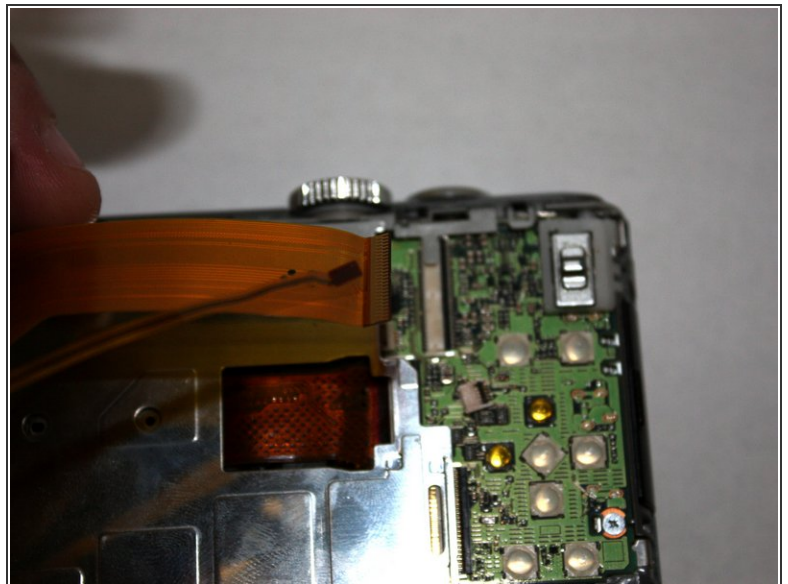
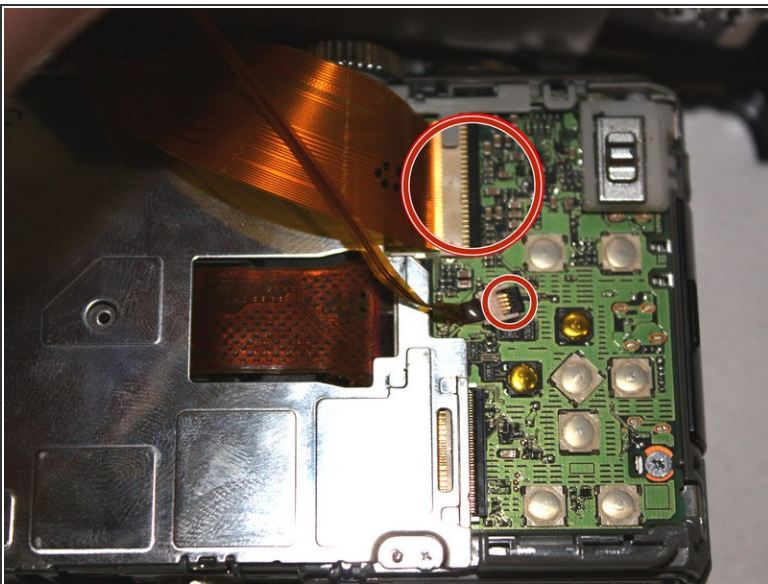
- Unscrew the two 1.0 mm screws on the bottom with a Phillips #000 screwdriver.
- Unscrew the two 1.0 mm screws to the left with a Phillips #000 screwdriver.
- Unscrew the two 1.0 mm screws to the right with a Phillips #000 screwdriver.

Step 3



- Separate the back of the camera from the main body carefully.
- ⚠ Do not apply excessive force. The LCD is connected by ribbon cables that can be easily damaged.

Step 4



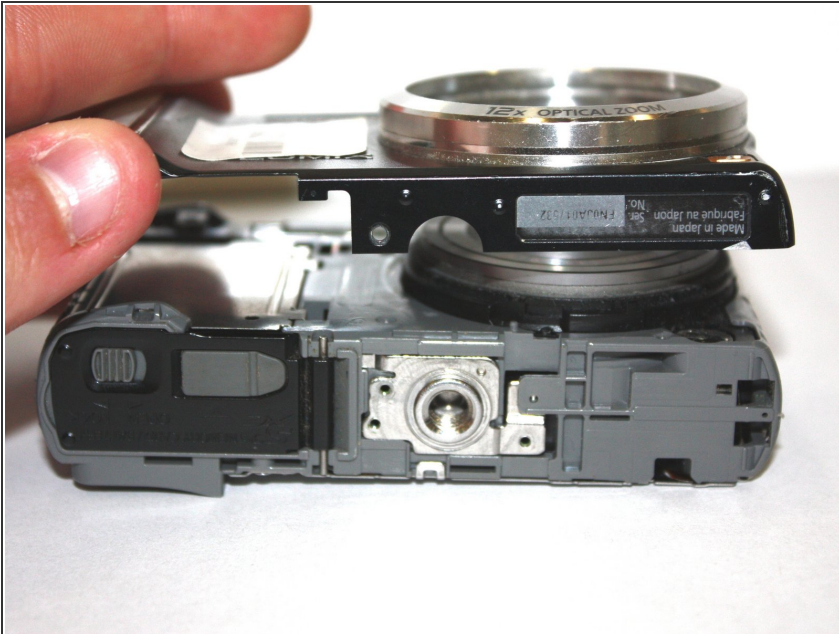
- Use the tip of the spudger to flip up the black tabs on the ribbon cables.
- Pull gently on the ribbon cables to unseat them.

Step 5



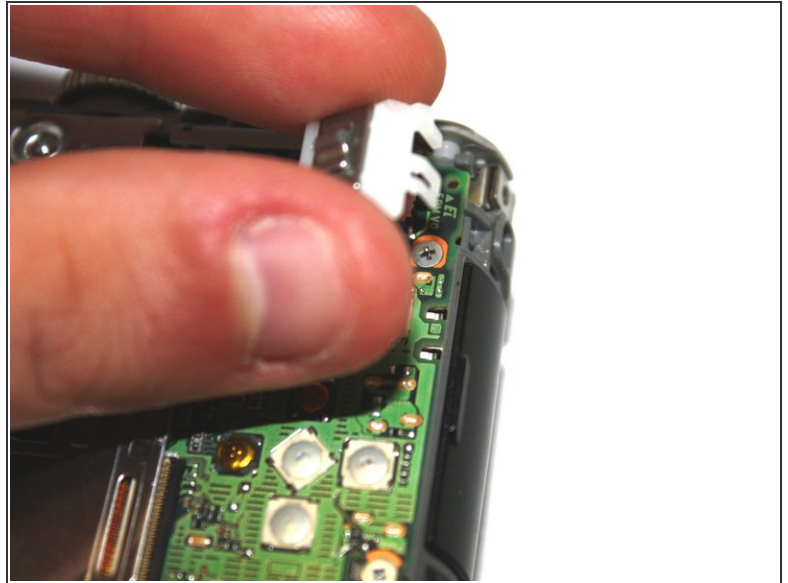
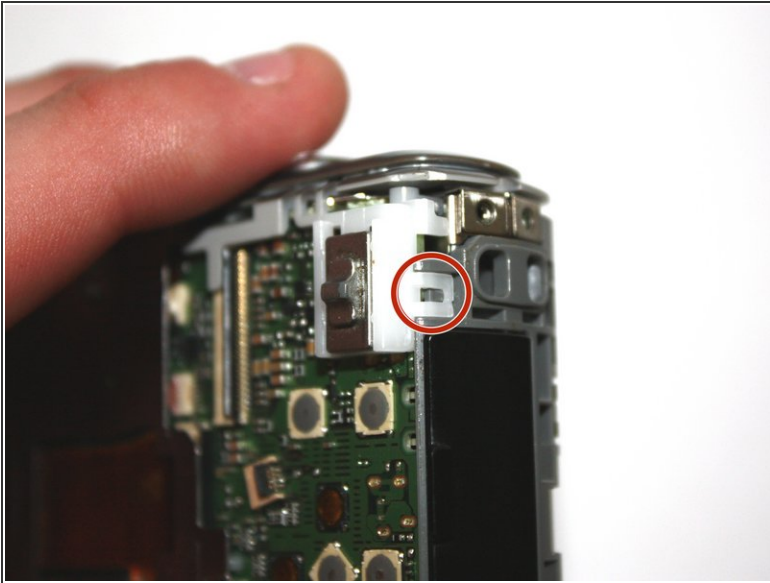
- Unscrew the 1.0 mm screws to the left with Phillips #000 screwdriver.
- Unscrew the 1.0 mm screws to the right with Phillips #000 screwdriver.
- Unscrew the one bottom 1.0 mm screw with a Phillips #000 screwdriver.

Step 6



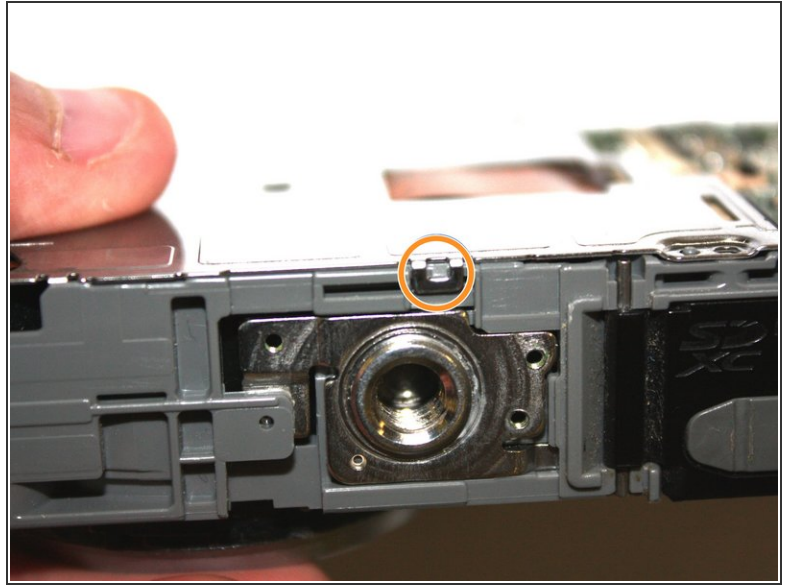
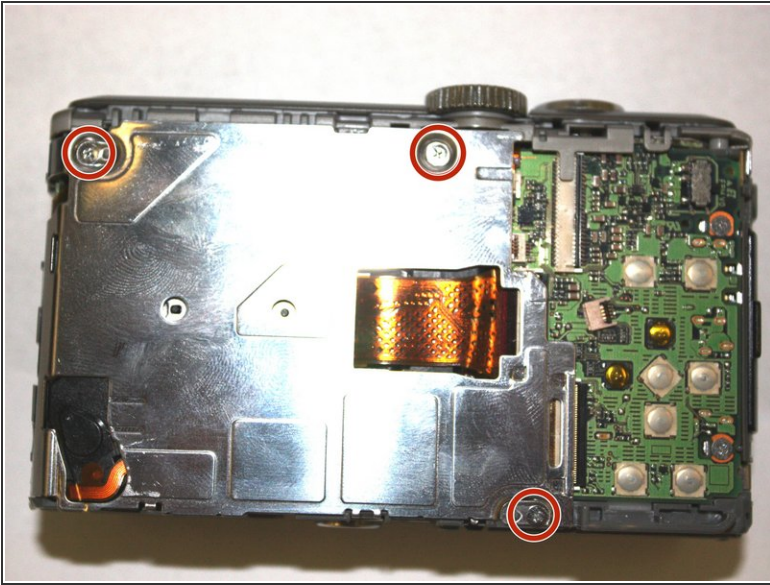
- Separate the front of the camera from the main body carefully.

Step 7



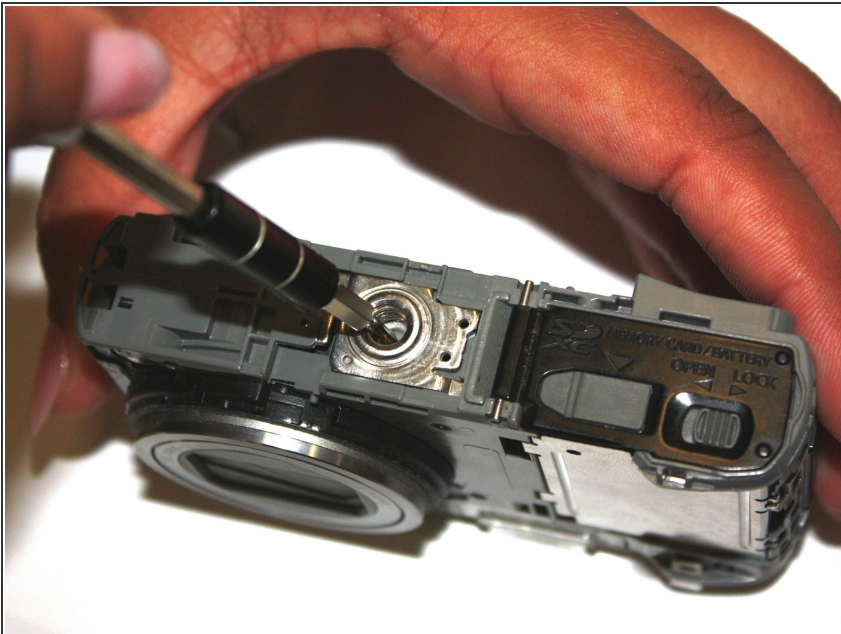
- Use the tip of the spudger to disengage the plastic tab.
- Lift the selector switch away from the motherboard carefully.

Step 8



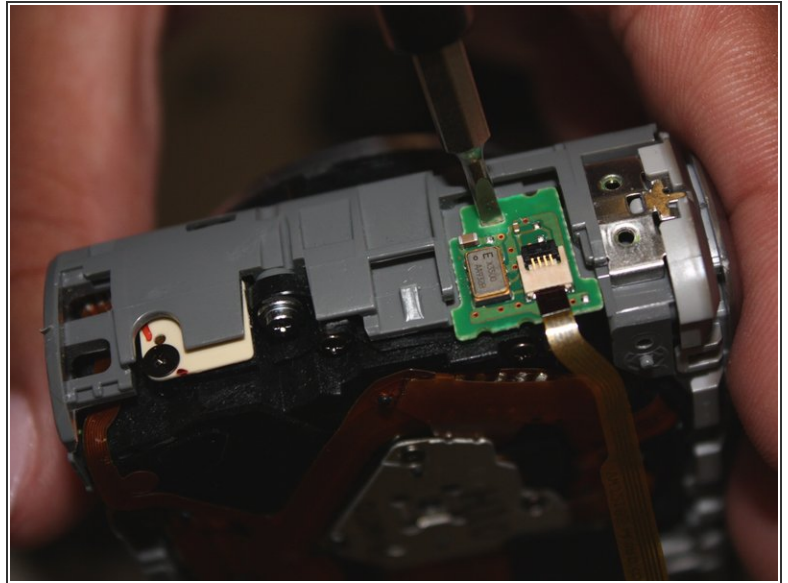
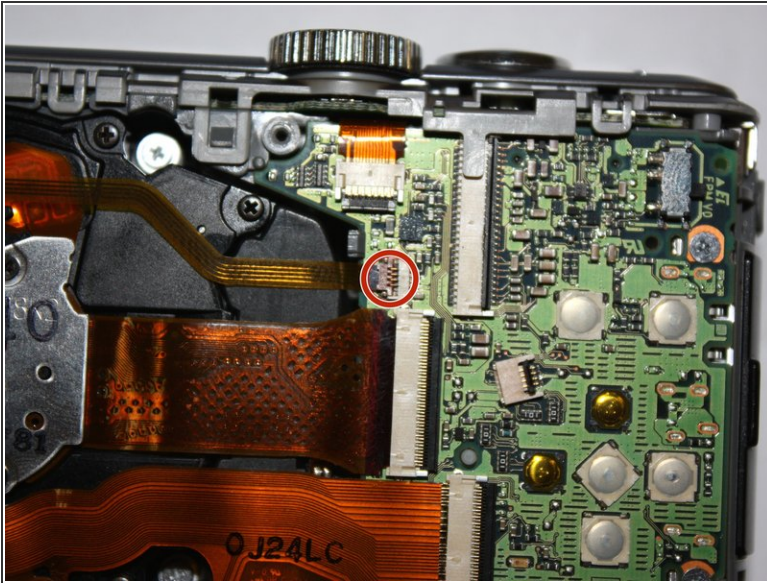
- Unscrew the three silver 1.0 mm screws with a Phillips #000 screwdriver.
- Use the tip of the spudger to disengage the metal tab, then carefully lift the shield away from the motherboard.

Step 9



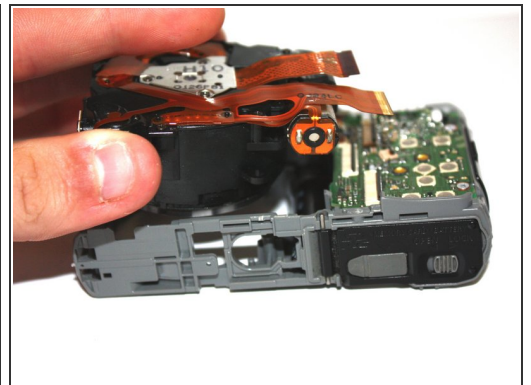
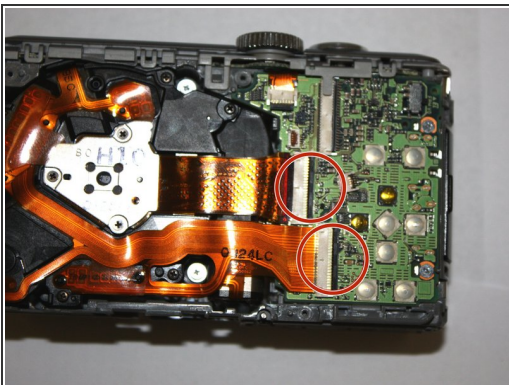
- Insert the tip of the spudger into the center hole of the tripod mount, and apply force in the direction facing away from the button.
- Lift the tripod mount out of the camera body carefully.

Step 10



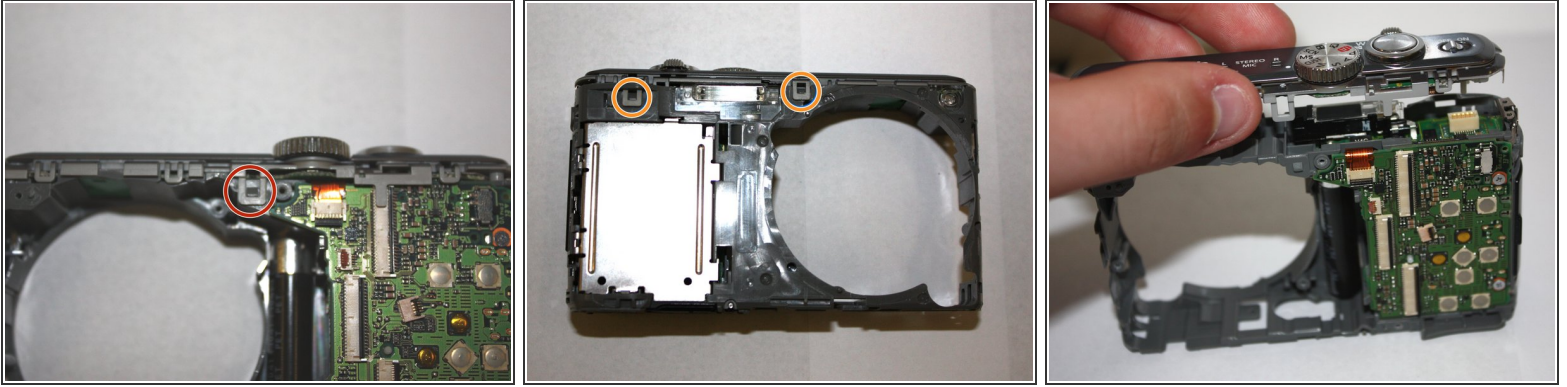
- Use the spudger to flip up the brown tab on the motherboard and carefully unseat the ribbon cable.
- Insert the tip of the spudger into the hole on the daughterboard, then apply upward force to remove the daughterboard from the main case.

Step 11



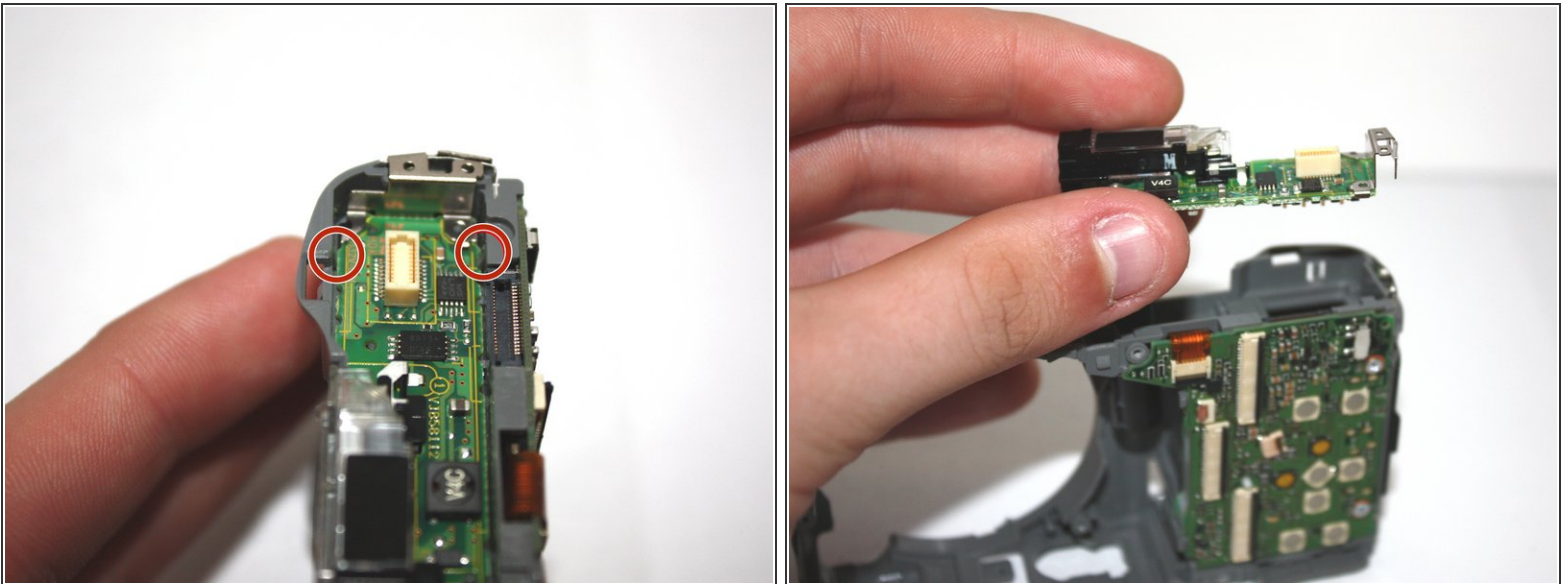
- Use the spudger to flip up the two tabs on the motherboard and carefully unseat the ribbon cables.
- Use the Phillips #000 screwdriver to remove the three silver 1.0 mm screws.
- Lift the lens assembly out of the camera carefully.

Step 12



- Use the tip of the spudger to disengage the tab on the back of the camera.
- Use the tip of the spudger to disengage the two tabs on the front of the camera.
- Lift the top assembly out of place carefully.

Step 13



- Use the spudger to disengage the two tabs.
- Lift the flash assembly out of place carefully.

To reassemble your device, follow these instructions in reverse order.

This document was generated on 2020-11-28 06:32:14 AM (MST).

