



# Alienware M11xR2 Battery Pack Replacement

Written By: darrius



---

## INTRODUCTION

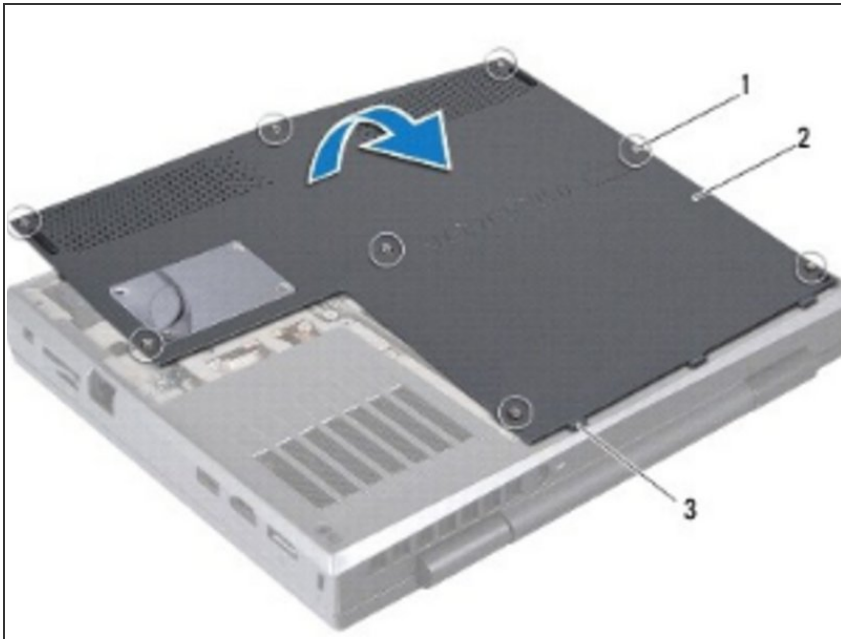
In this guide, we will be showing you how to remove and replace the Battery Pack.



### TOOLS:

- [Phillips #0 Screwdriver](#) (1)
-

## Step 1 — Removing the Base Cover

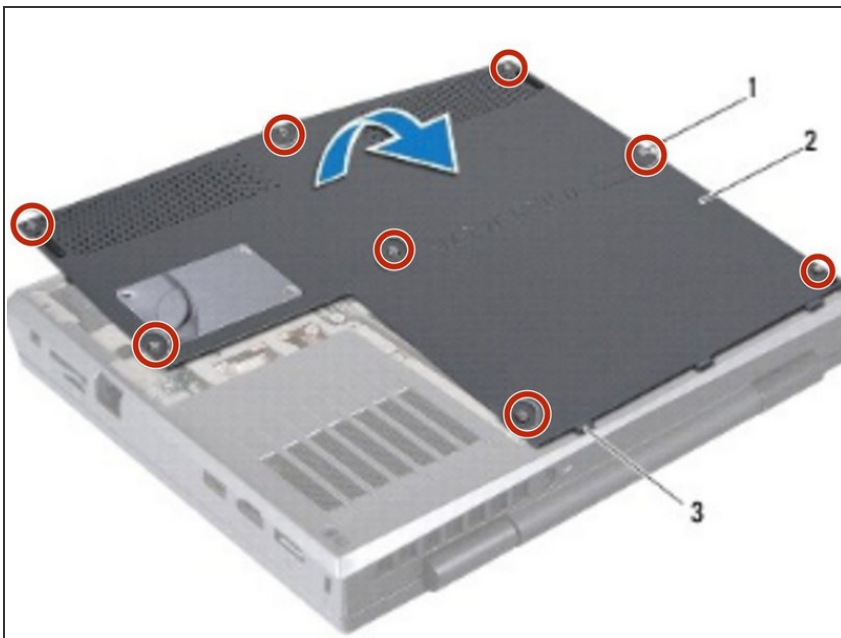


**⚠ WARNING:** Before working inside your computer, read the safety information that shipped with your computer.

**⚠ CAUTION:** To avoid electrostatic discharge, ground yourself by using a wrist grounding strap or by periodically touching an unpainted metal surface (such as a connector on your computer).

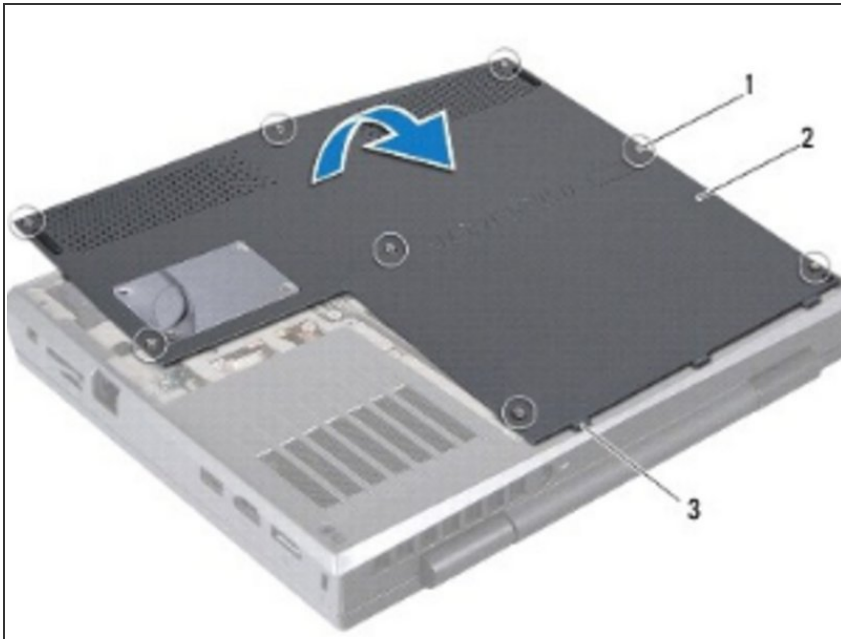
- Turn the computer over.

## Step 2 — Loosen the Screws



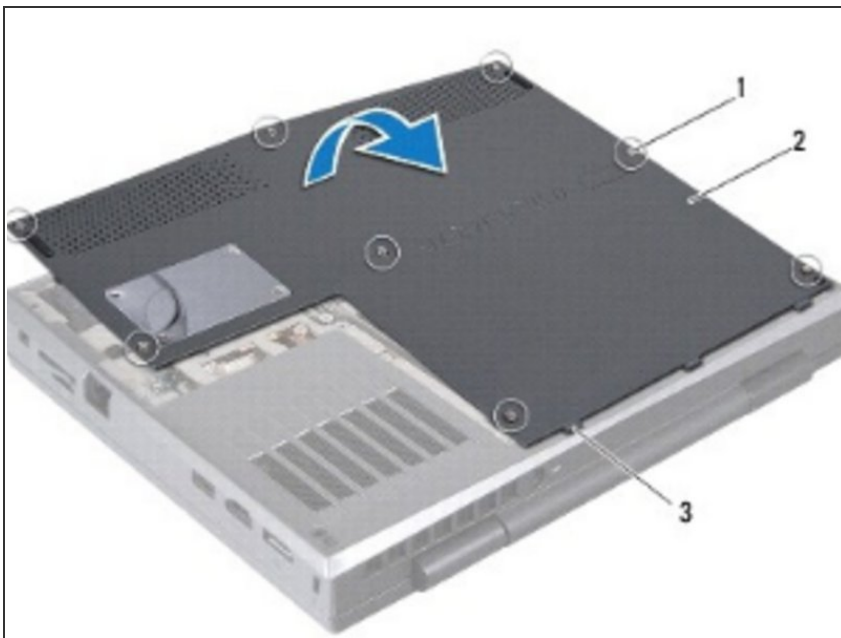
- Loosen the eight captive screws that secure the base cover to the computer base.

### Step 3 — Lifting the Base Cover



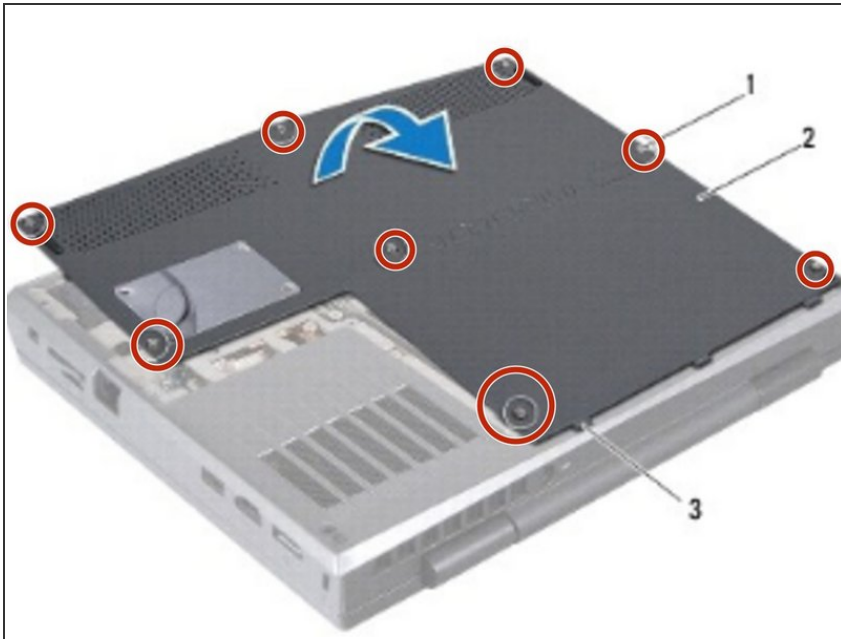
- Lift the base cover off the computer base.

### Step 4 — Replacing the Base Cover



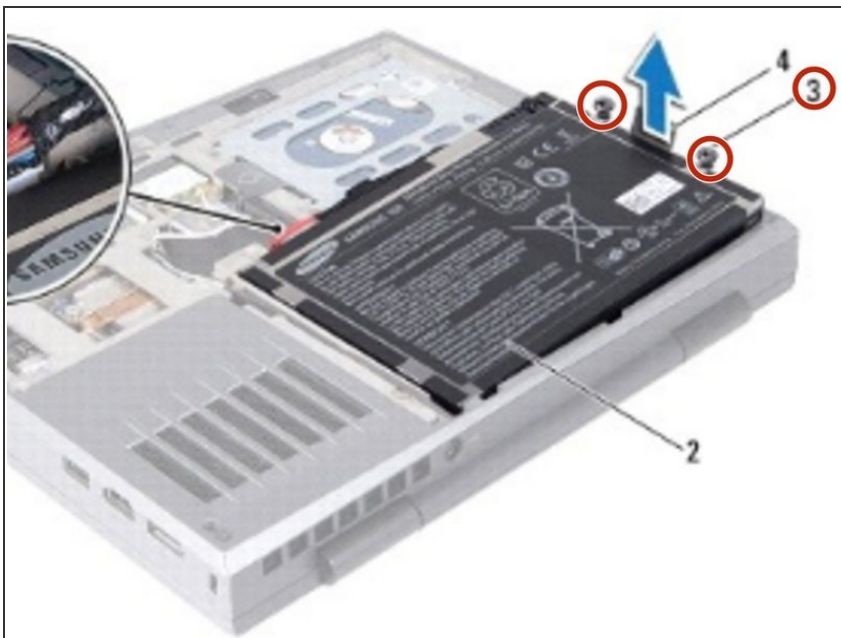
- Align the tabs on the **NEW** base cover with the slots on the computer base and place the base cover in position.

## Step 5 — Securing the Screws



- Tighten the eight screws that secure the base cover to the computer base.

## Step 6 — Removing Screws



- ⚠ **WARNING:** Before working inside your computer, read the safety information that shipped with your computer.
- ⚠ **CAUTION:** To avoid electrostatic discharge, ground yourself by using a wrist grounding strap or by periodically touching an unpainted metal surface (such as a connector on your computer)
- Remove the two screws that secure the battery pack to the computer base.

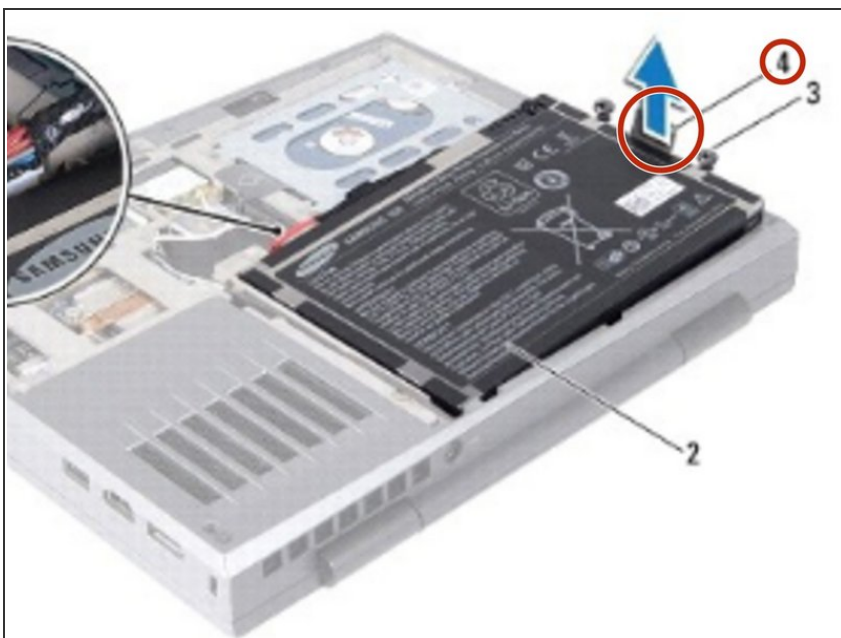


## Step 7 — Disconnecting cable



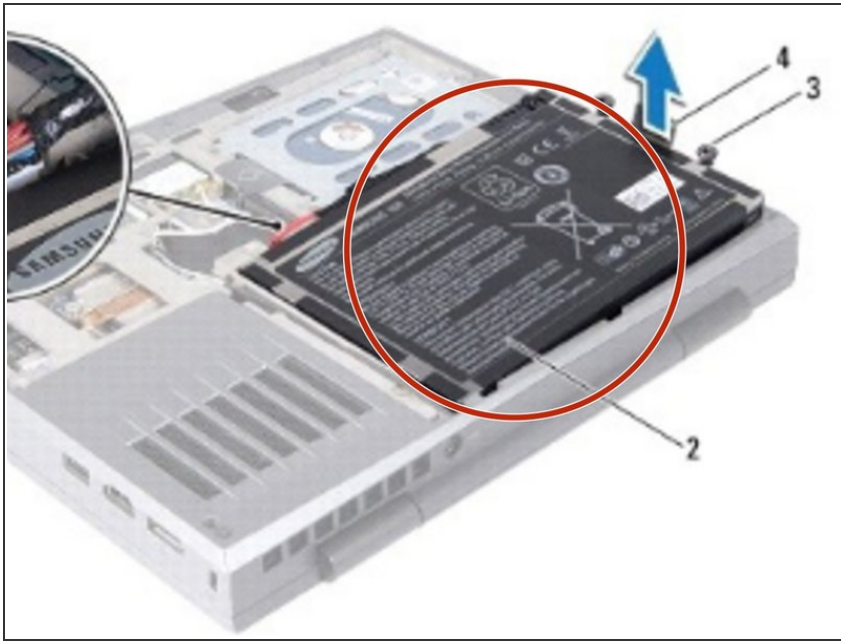
- Disconnect the battery pack cable from the connector on the system board.

## Step 8 — Lifting Battery Pack



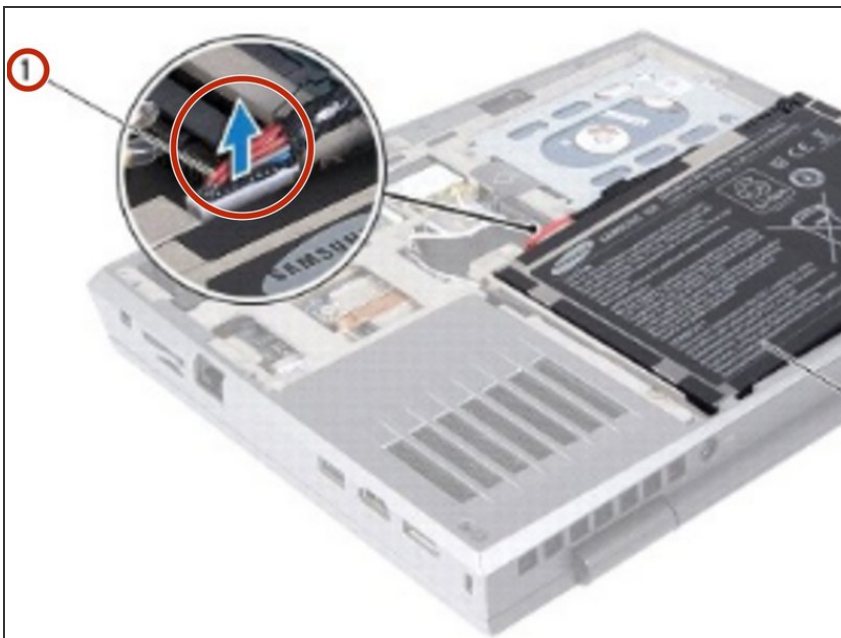
- Using the pull-tab, lift the battery pack off the computer base.

## Step 9 — Placing New Battery Pack



- Place the **NEW** battery pack in the battery bay and replace the two screws that secure the battery pack to the computer base.

## Step 10 — Routing Battery Pack



- Route the battery pack cable in the routing guide

## Step 11 — Connecting Battery Pack



- Connect the battery pack cable to the connector on the system board.