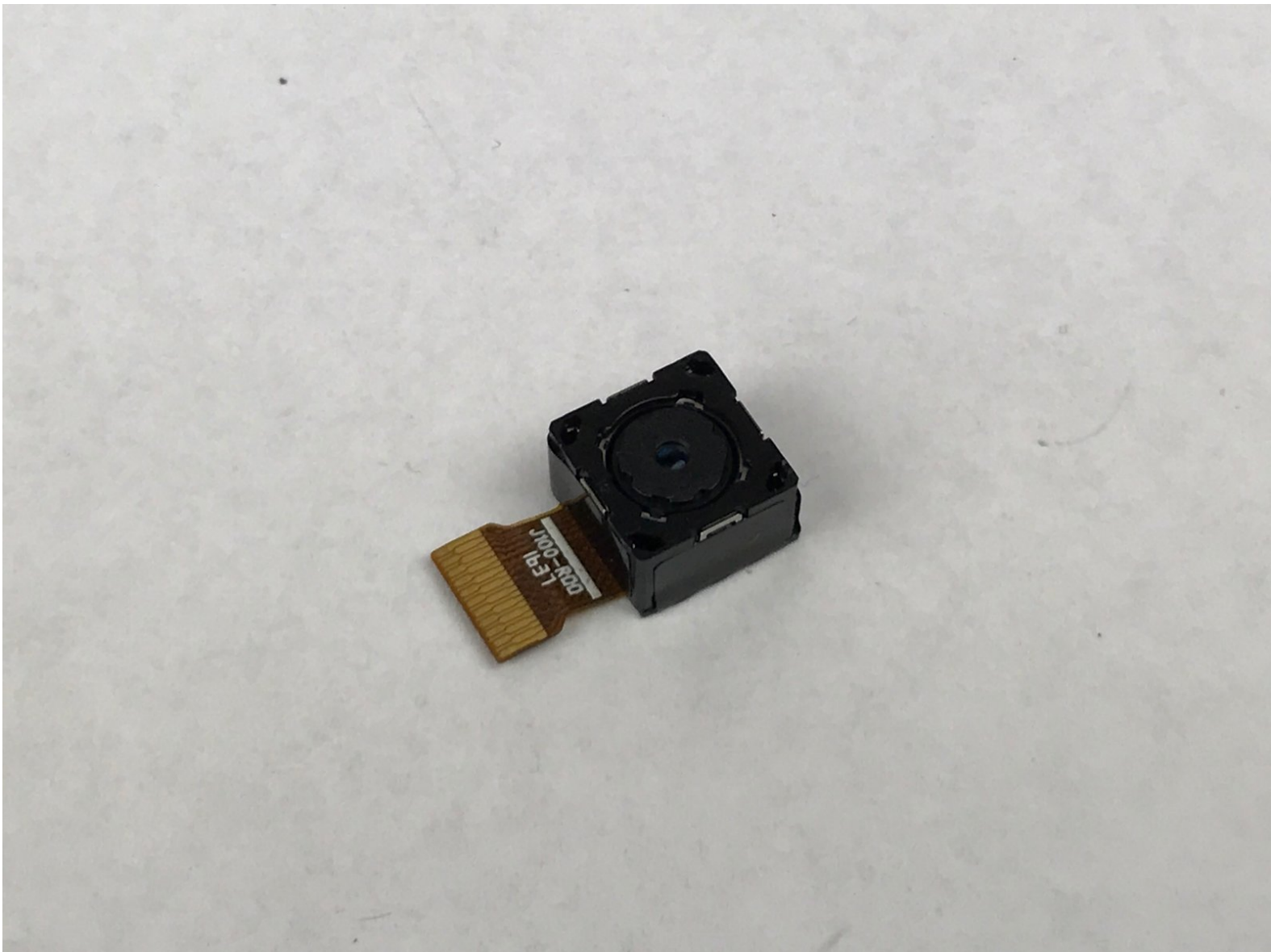




# Samsung Galaxy J1 Rear Camera Replacement

This guide will assist in the replacement of the Samsung Galaxy J1's rear Camera.

Written By: Sean Kramer



---

# INTRODUCTION

Use this guide to replace the Rear Camera.



## TOOLS:

- [Phillips #00 Screwdriver](#) (1)
  - [iFixit Opening Tools](#) (1)
  - [Spudger](#) (1)
-

## Step 1 — Midframe



- Insert a finger nail or plastic opening tool between the back cover and the device.
- Gently pry the rear cover off of the back of the phone.

## Step 2



- Using a finger, pull the SIM card down out of its slot.
  - Remove the SIM card.
- i** The pictured device is missing the SIM card and battery.

## Step 3




- Using a Phillips #00 screwdriver remove the eleven 3 mm screws.

## Step 4

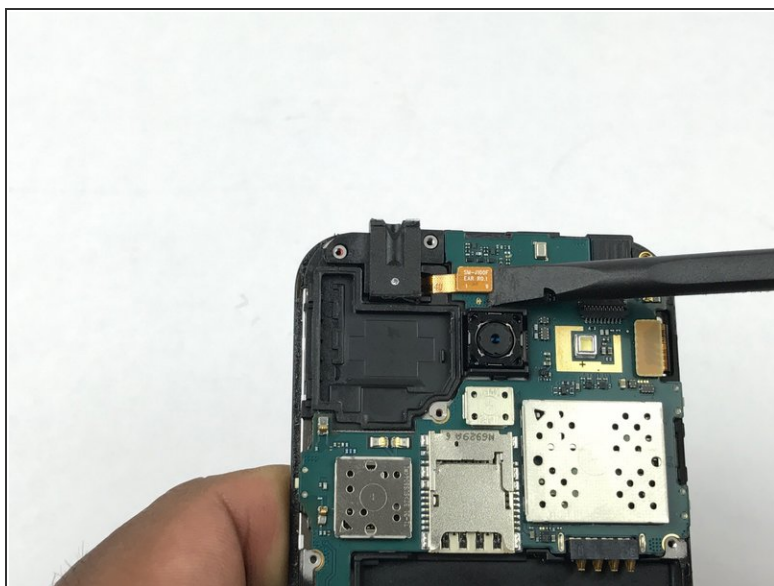


- Insert a plastic opening tool between the screen and the back of the device.
- Starting at the bottom of the device, gently slide the tool along the edges of the screen.
- Gently pry the main assembly from the midframe of the device.

 When removing the main assembly, pry gently so as to not crack the glass screen or break any clips within the device.



## Step 5 — Rear Camera



- Use the flat end of a spudger to disconnect the ear speaker connector from the motherboard.

## Step 6



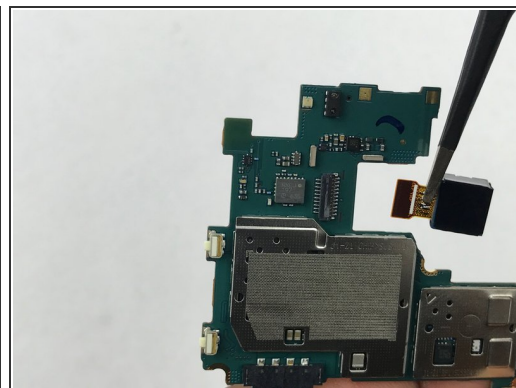
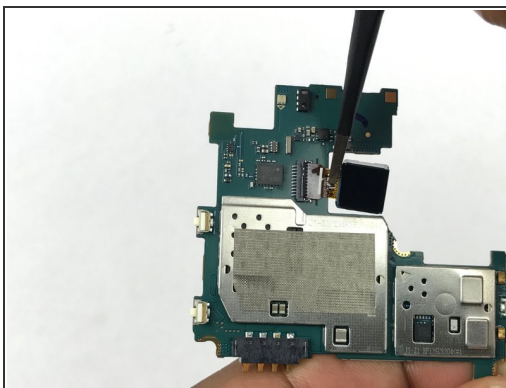
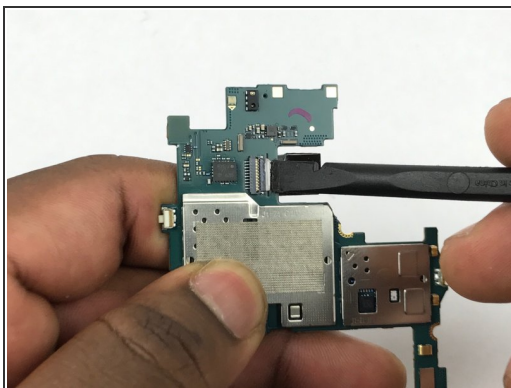
- Use the flat end of a spudger to disconnect the digitizer connector from the motherboard.

## Step 7



- Use a plastic opening tool to gently pry under the motherboard.
- Remove motherboard.

## Step 8



- Use the flat end of a spudger to disconnect the rear camera from the motherboard.
- Remove the rear camera.

To reassemble your device, follow these instructions in reverse order.