



Acer Aspire One Cloudbook 14 AO1-431-C8G8

Wifi Card Replacement

The Intel Wifi card is connected to the Acer motherboard. This component allows you to connect to the internet.

Written By: Joseph



INTRODUCTION

The Wifi card allows the user to connect to a wireless network. This guide will show you how to remove and replace the Wifi card in this laptop.



TOOLS:

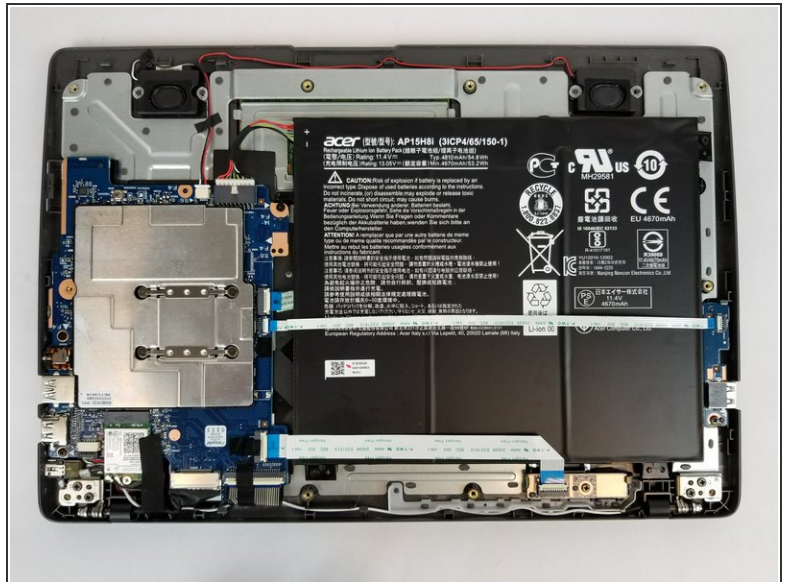
- [Phillips #1 Screwdriver](#) (1)
 - [iFixit Opening Tools](#) (1)
-

Step 1 — Back Panel



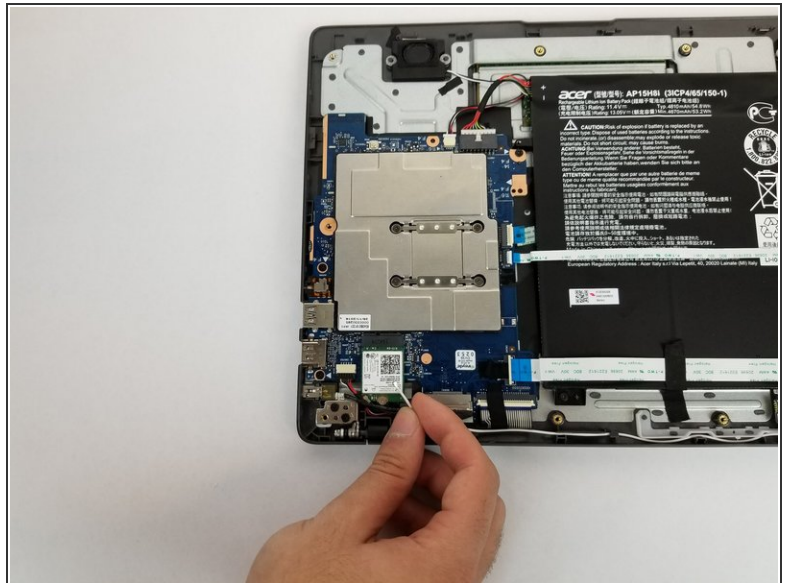
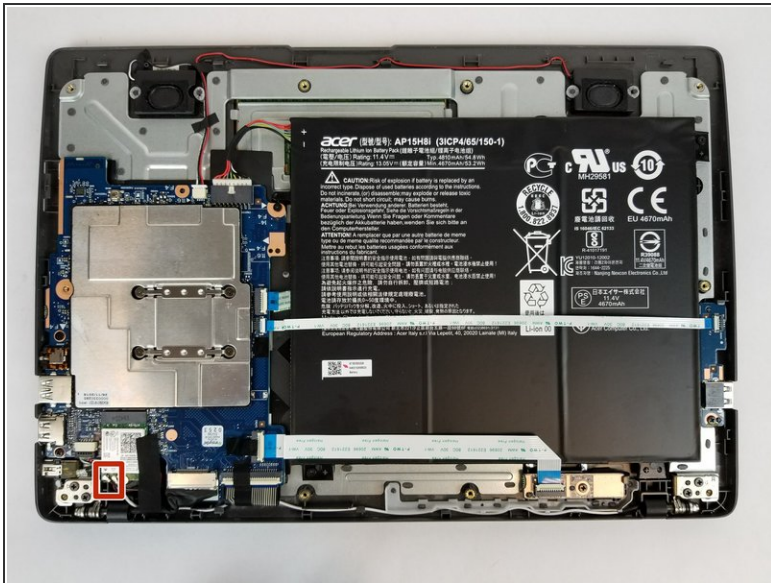
- Remove the ten 7mm Phillips #0 screws from the bottom.

Step 2



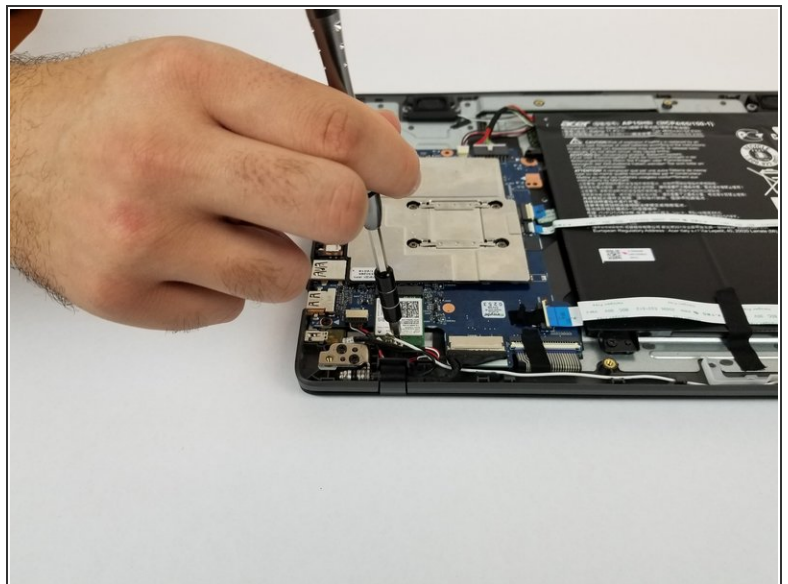
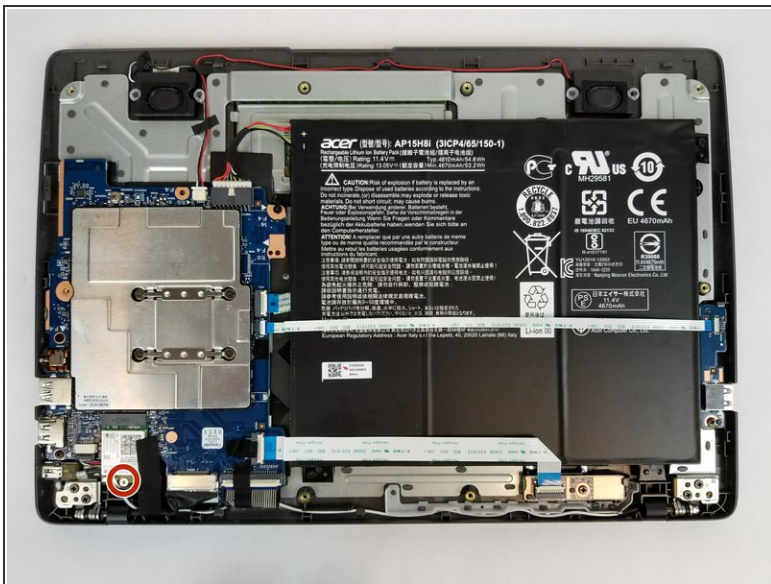
- Insert a plastic opening tool under the bottom cover and slid it around the perimeter until all of the clips release.

Step 3 — Wifi Card



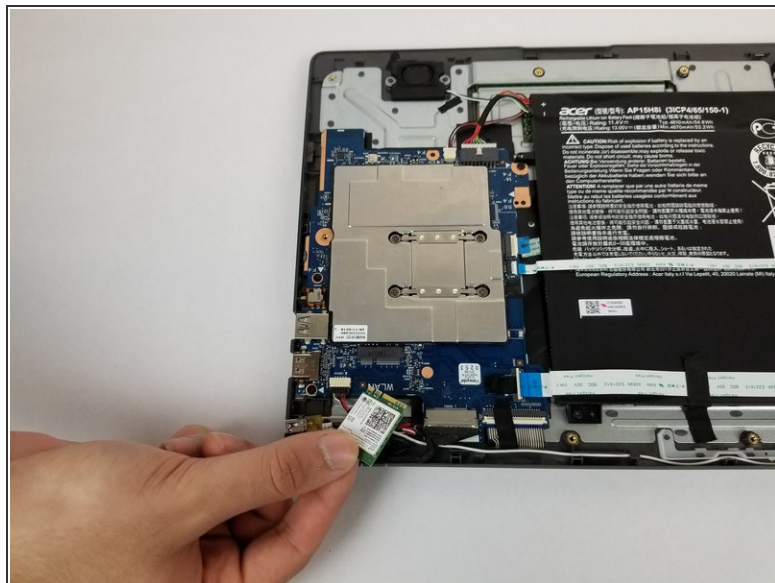
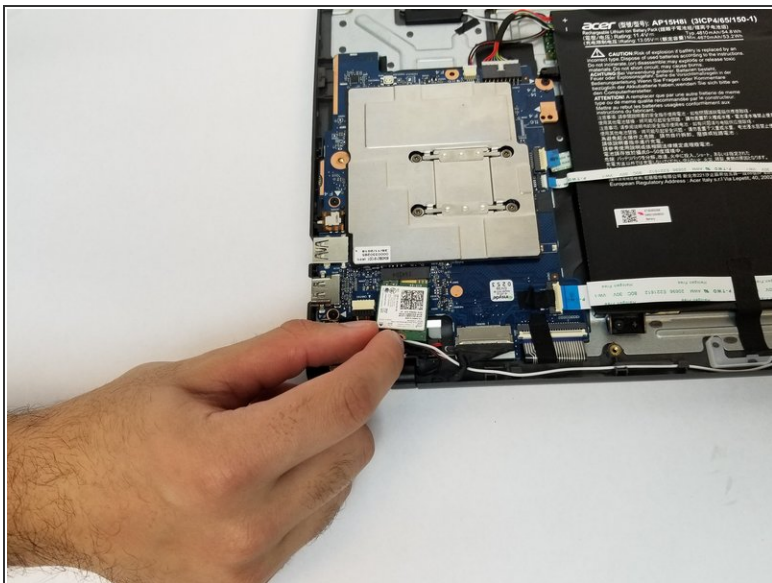
- Disconnect the two antenna cables from the Wi-Fi card.

Step 4



- Remove the single 5mm Phillips #0 screw from the Wi-Fi card.

Step 5



- Slide out the Wifi card from its slot by pulling parallel to the board.

To reassemble your device, follow these instructions in reverse order.