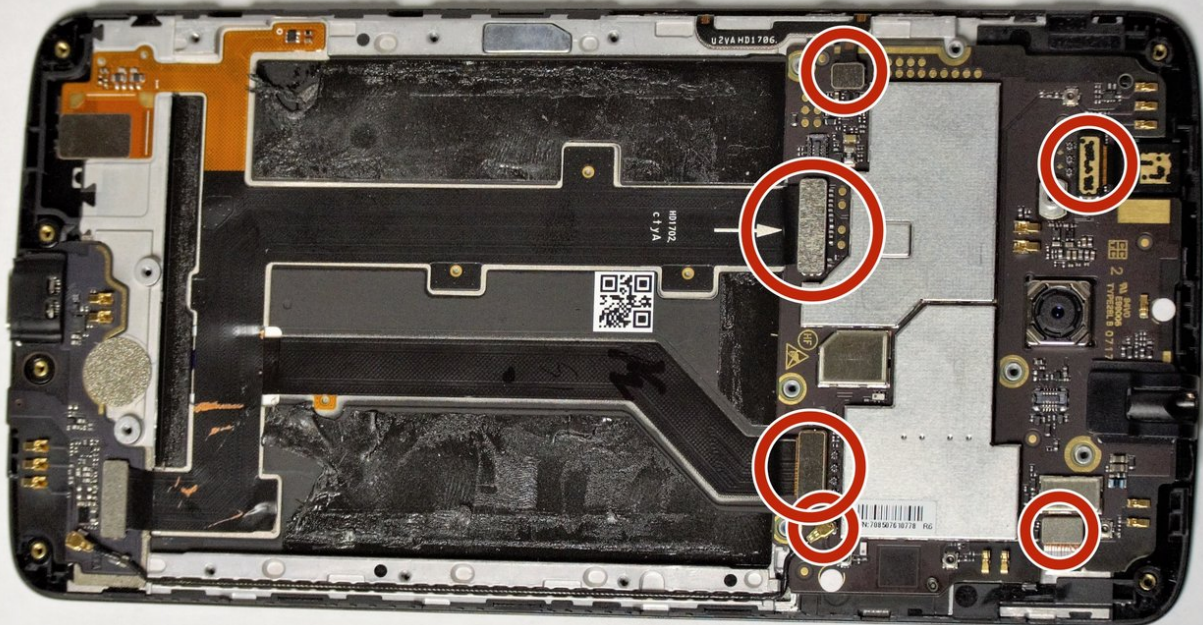




ZTE Max XL SIM Card Replacement

This guide will help you remove and replace/insert your ZTE Max XL's SIM Card.

Written By: Olivia Wolf



INTRODUCTION

This guide has step-by-step instructions on how to replace or remove your ZTE Max XL SIM card tray. To determine if you need to replace your charging port refer to our [Troubleshooting Guide](#).

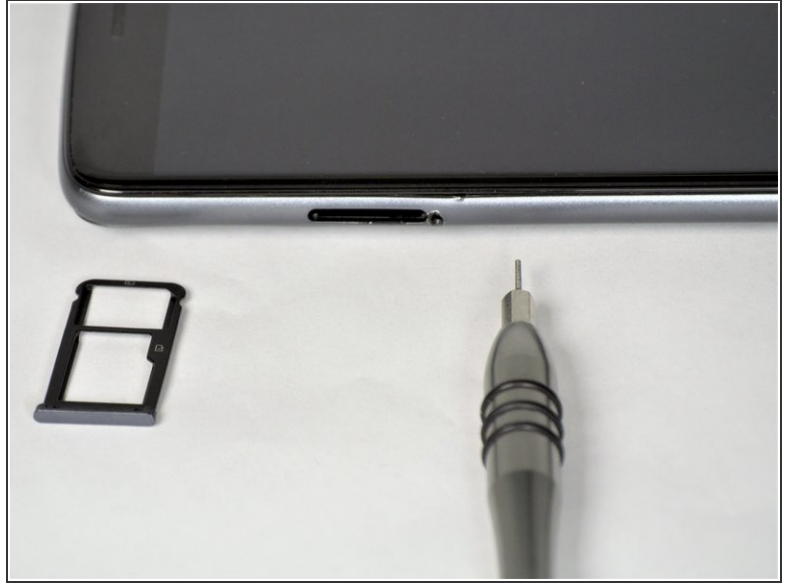
Note: If the SIM card does not eject in the first step, you will have to complete the full removal guide.



TOOLS:

- [JIS #00 Screwdriver](#) (1)
 - [iOpener](#) (1)
 - [Spudger](#) (1)
 - [iFixit Opening Tools](#) (1)
 - [SIM Card Eject Tool](#) (1)
 - [iFixit Opening Picks set of 6](#) (1)
-

Step 1 — Battery



✦ Before any disassembly, make sure the phone is powered off.

- Use the SIM Card Eject Tool to remove the SIM card tray. To do this, insert the key into the hole on the side of the phone near the SIM card tray.

Step 2



- Apply the iOpener to the back of the phone. For instructions on how to use the iOpener, use [this guide](#).
- ⓘ On the phone shown there was adhesive on the top and bottom of the phone backing, so we specifically heated these areas.
- ⚠ **Do not heat the phone too much in one area - it may warp the plastic backing.**

Step 3



- Starting at one corner, wedge the plastic opening pick underneath the plastic backing to start undoing the tabs that connect the backing to the phone. There are 3 tabs on top and bottom, and 6 on each side.

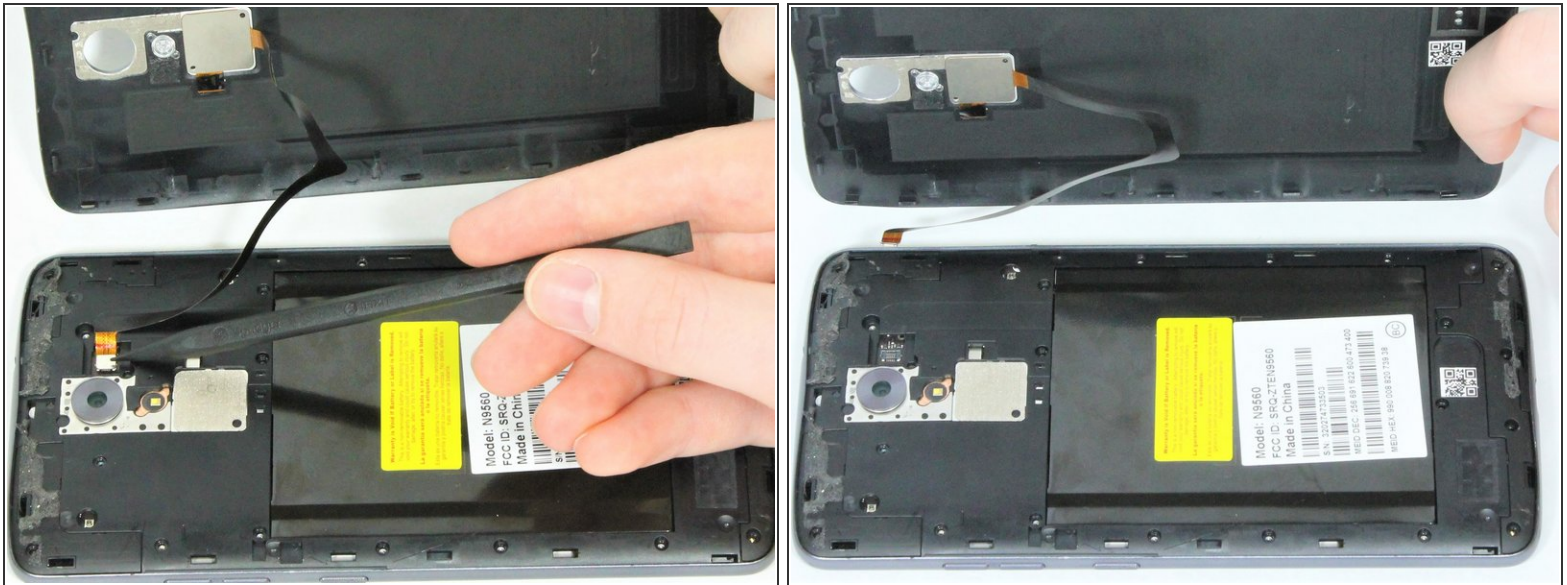
 **Use extreme caution to not puncture the lithium ion battery.**

Step 4



- ⓘ Carefully undo the ribbon wire for the fingerprint scanner before full removal of the backing.
- There are two 3.4mm JIS 00 screws that hold the wire in place, one may be under a lock sticker. Remove the screws with the JIS 00 screwdriver.

Step 5



- After removal of the two 3.4mm JIS 00 screws, disconnect the connector that attaches the ribbon wire from the main part of the phone.

Step 6



- Remove the nineteen 3.4mm JIS 00 screws on the perimeter of the back using the JIS 00 screwdriver.

Step 7



- Use a plastic opening pick between the screen and side trim battery cover to remove the screen.

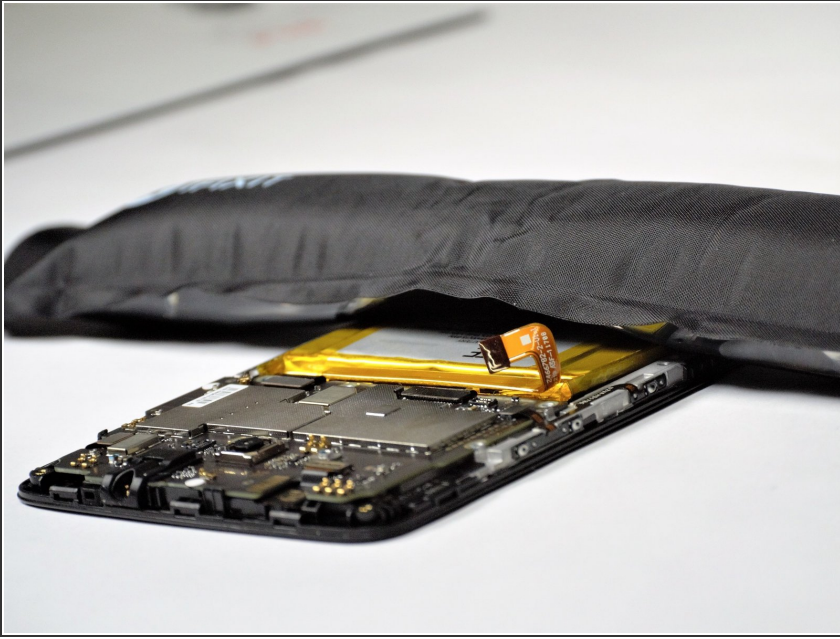
⚠ If the SIM Card is still in place during removal of the siding, take care during removal to avoid damaging the SIM Card.

Step 8




- On the top left of the battery, flip the metal clips with a pick and remove the battery ribbon from the shell.

Step 9



- Using the iOpener heating pack, **CAREFULLY** apply heat to the battery. For instructions of how to use the iOpener, use [this guide](#)

 **Use extreme caution to not overheat the battery. Never use any open flames or high heat.**

- ⓘ Adhesive is used to secure the battery to the phone. If you're having problems you may need to heat the screen as well.

Step 10



- Using the iFixit opening tools carefully pry the edges of the battery away from the casing.

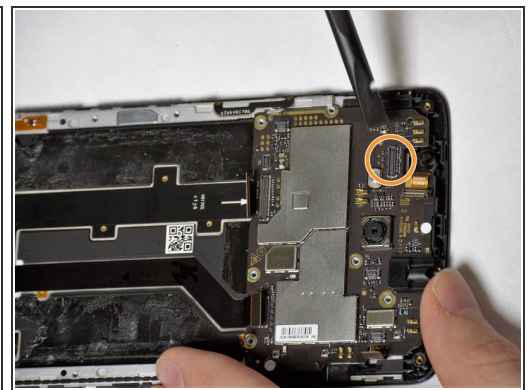
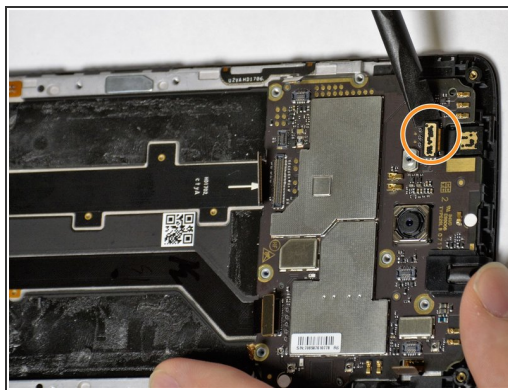
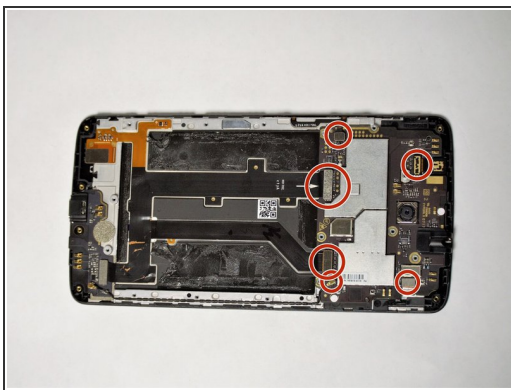
- ⓘ While prying, take care to not scrape the wires underneath the battery.

Step 11



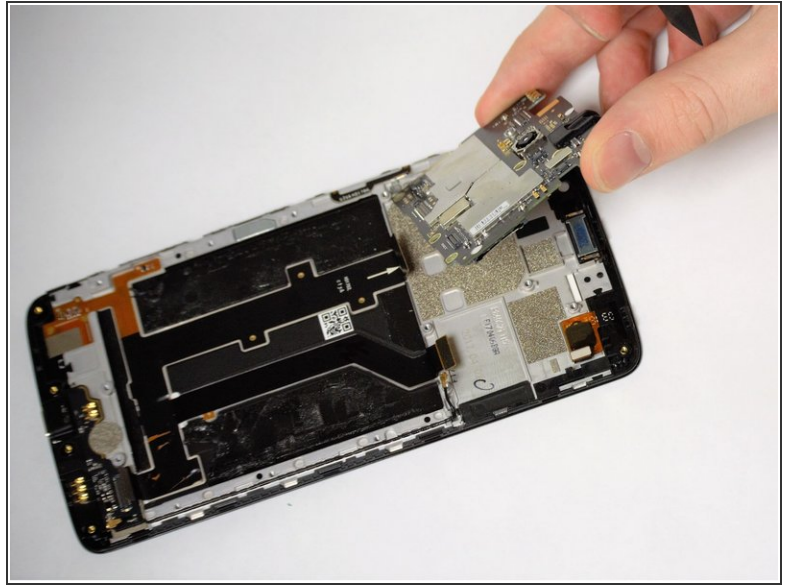
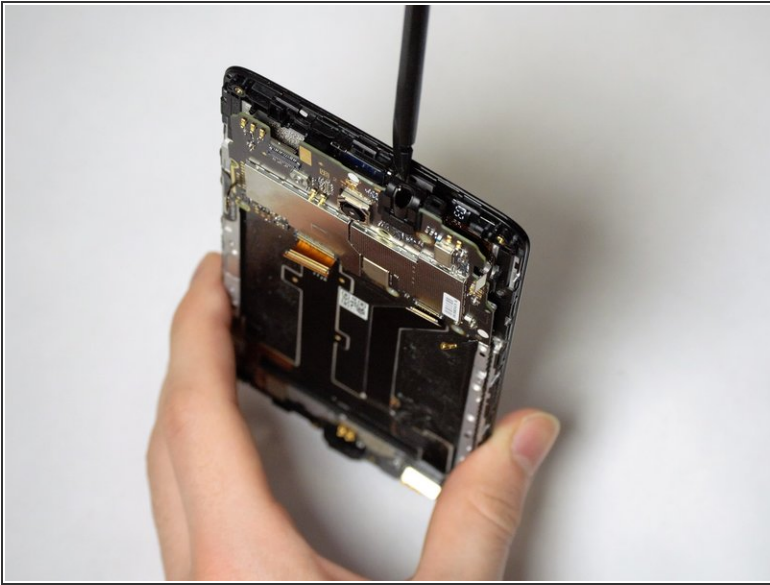
- With the battery removed, you can now insert the new battery or replace other parts within your phone.

Step 12 — SIM Card



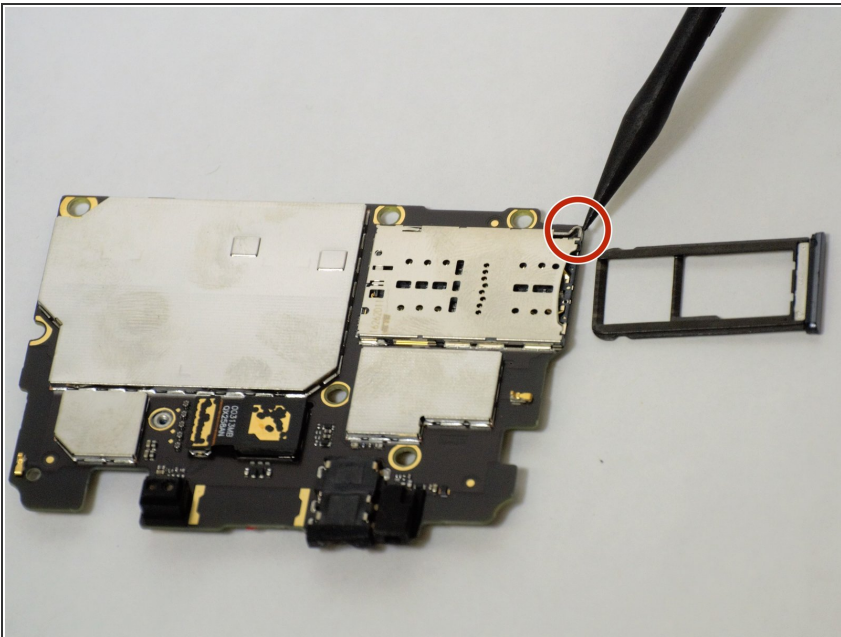
- Disconnect the six connections located on the large circuit board.
- The camera itself is lightweight so take care during disconnection of the connector not to lose it.

Step 13



- Gently pry off the large circuit board using the plastic spudger.

Step 14



- With the circuit board removed, press the small button next to the SIM Card slot, this will cause the

tray to pop out slightly. Remove the SIM card tray.

To reassemble your device, follow these instructions in reverse order.