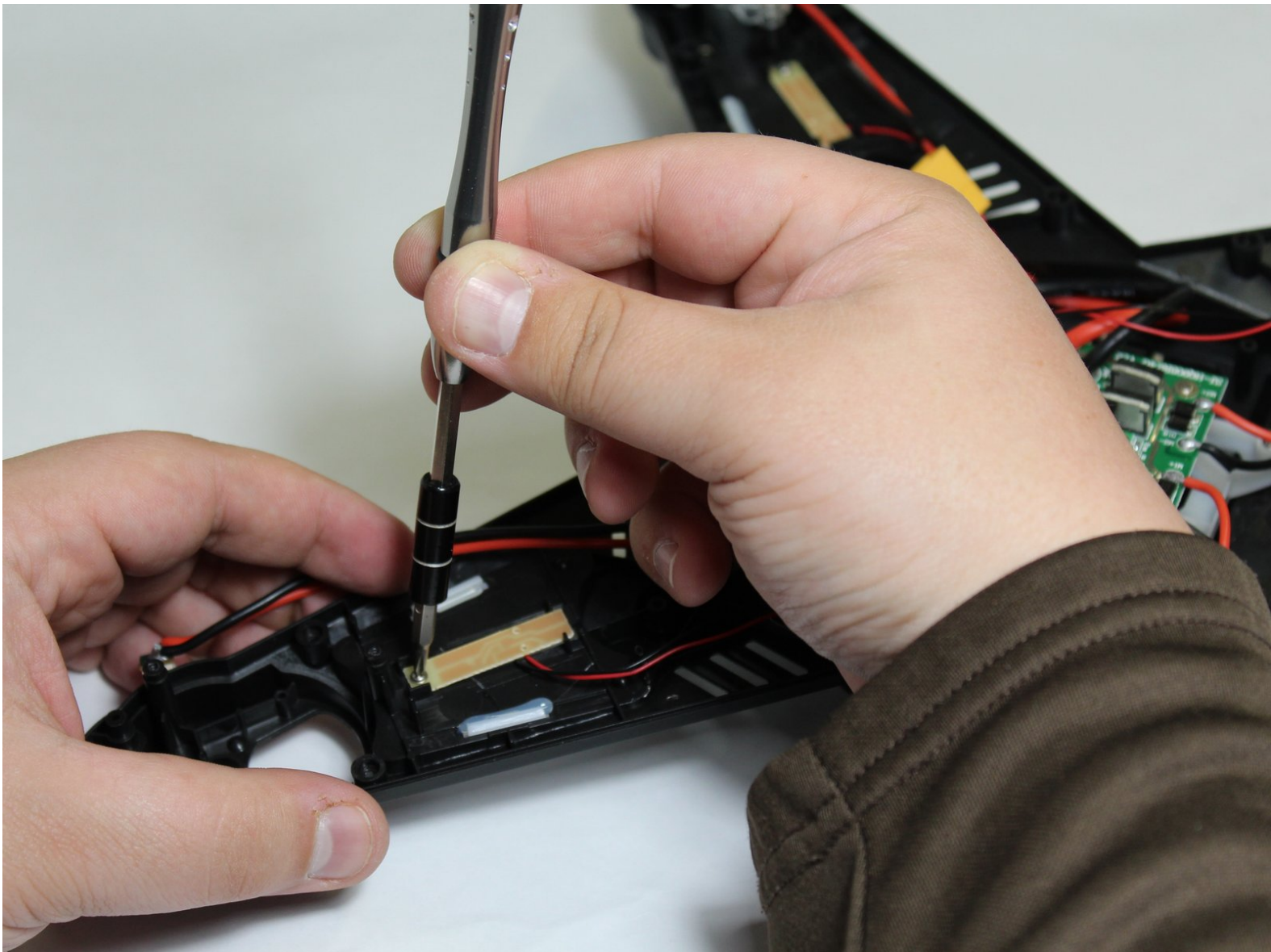




Protocol Galileo Stealth Light Emitting Diode (LED) Replacement

Replacing the Light Emitting Diode (LED) is a moderately difficult process that requires minimal tooling. Prerequisite steps are required.

Written By: Matthew Selting



INTRODUCTION

This guide will walk you through how to replace the light emitting diodes (LED) on the drone. Minimal tooling is required, but the risk of damaging the drone is greater than many of the other guides if each step is not followed and executed with extra care.

TOOLS:

- [iFixit Opening Tools](#) (1)
 - [Phillips #0 Screwdriver](#) (1)
-

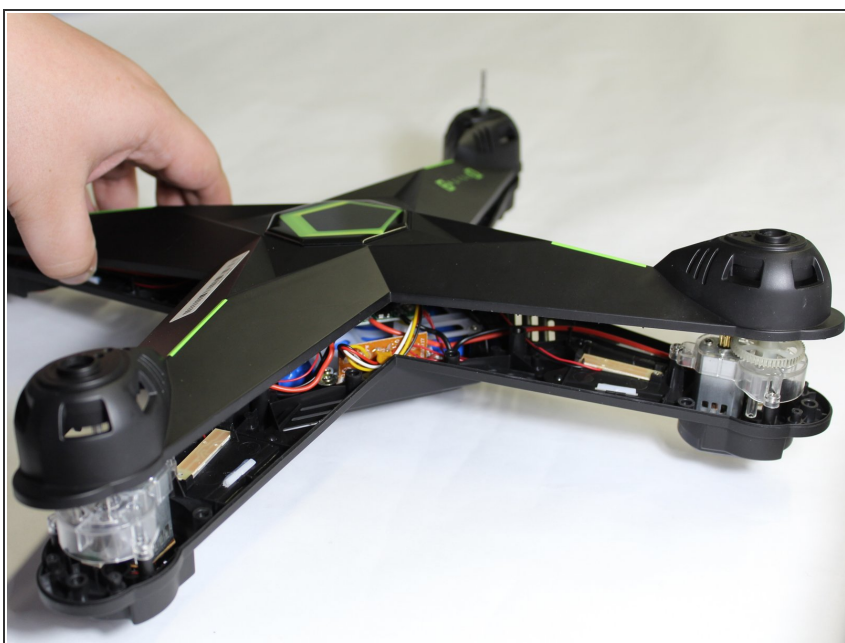
Step 1 — Housing



- Remove the 8mm long Phillips #0 screws (24 total) from the lower housing unit.

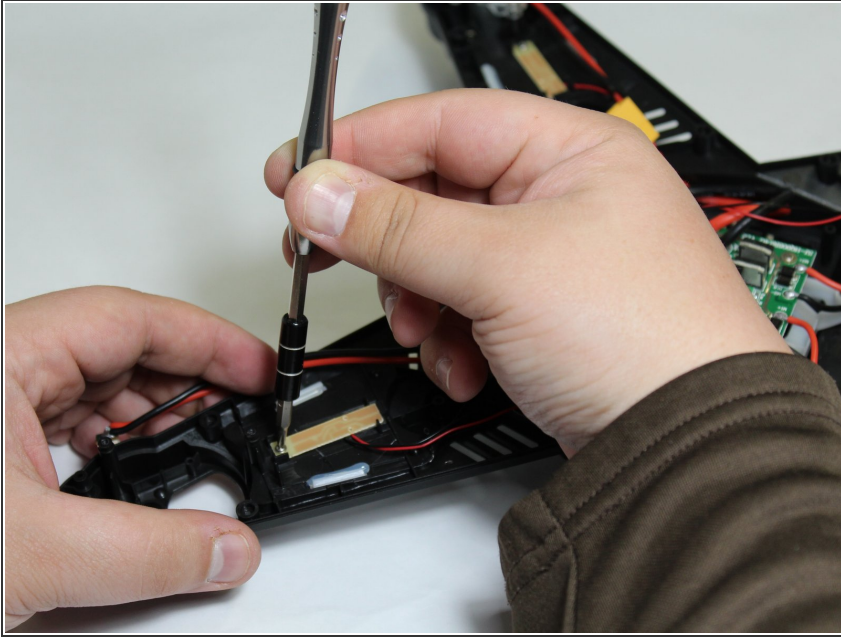
☛ Take care to place the screws in a safe place to prevent losing them.

Step 2



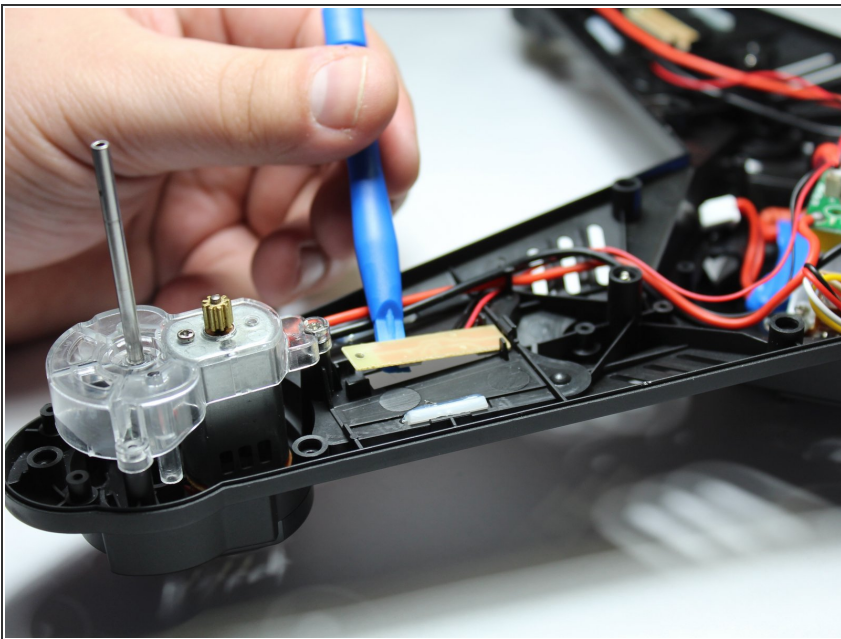
- Separate the upper and lower housing units by lightly pulling the two housing units apart.

Step 3 — Light Emitting Diode (LED)



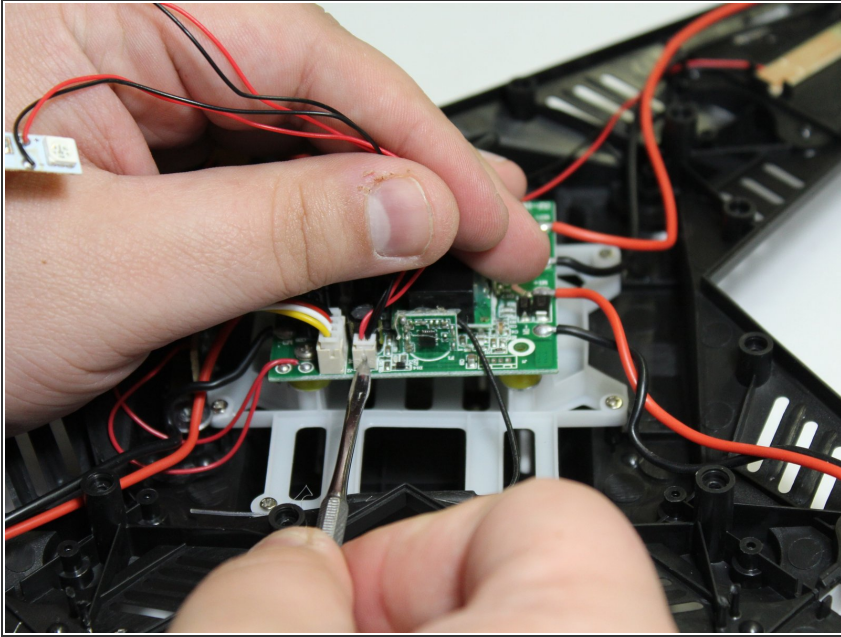
- Remove 6mm Phillips #0 screw from the LED strip.

Step 4



- Remove the LED strip from the housing by applying light pressure away from the lower housing with the plastic opening tool.
- ⚠ Take care not to damage the LED strip when removing it from the lower housing.

Step 5



- Unclip the wire plug from the motherboard by applying light pressure away from the motherboard with the plastic spudger.

⚠ Avoid damaging the wire plug, wires, and motherboard when removing the wire plug.

To reassemble your device, follow these instructions in reverse order.