



# Disassembly of the Back Panel

These easy steps will help you disassemble your laptop's back panel. This is done with a Philips screw driver to allow access to the internal components.

Written By: Timothy Sumner



## INTRODUCTION

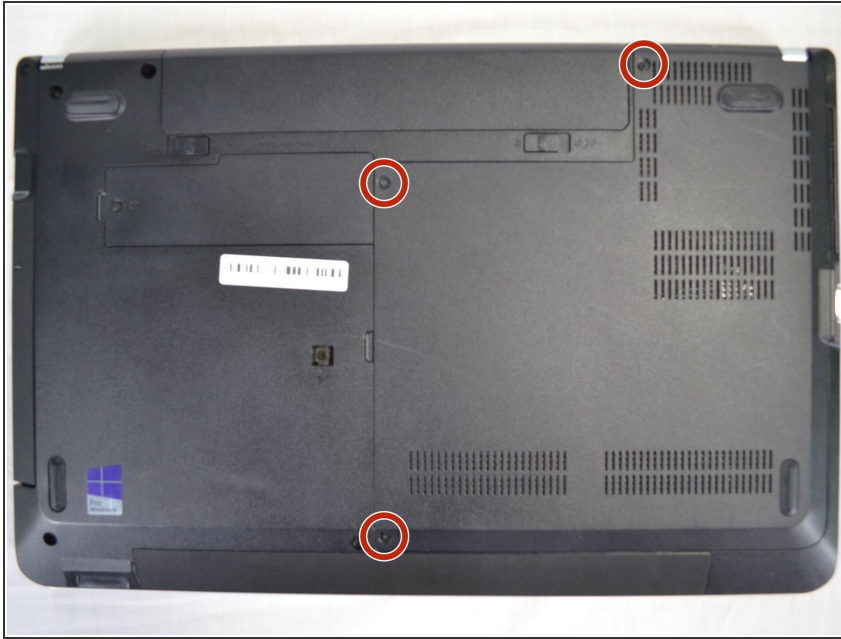
To repair or replace internal components such as the RAM, hard drive, WIFI card, fan etc., the back cover plate must be removed. Removing the cover will allow access to the internal components.



### TOOLS:

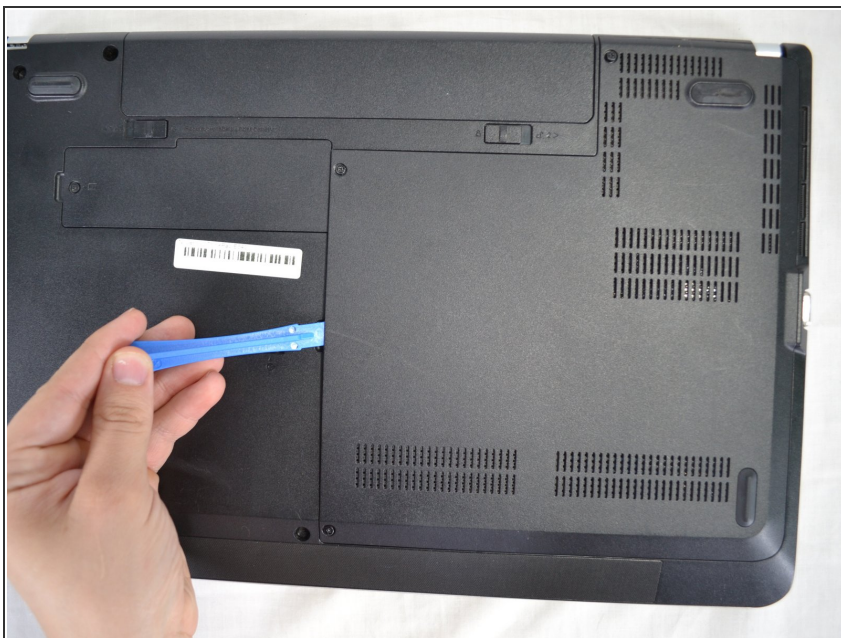
- [Phillips #00 Screwdriver](#) (1)
  - [iFixit Opening Tools](#) (1)
-

## Step 1 — Disassembly of the Back Panel



- Remove the three 1.2mm Phillips #00 screws from the bottom panel.

## Step 2



- Use a plastic opening tool to pry off the bottom panel.

To reassemble your device, follow these instructions in reverse order.