



Moto G4 Front-facing Camera Replacement

If the front camera on your Moto G4 is no...

Written By: Kieran Basheer



INTRODUCTION

If the front camera on your Moto G4 is no longer working, follow this step by step guide to replace it yourself.

Before you begin, download the [Rescue and Smart Assistant](#) app to backup your device and diagnose whether your problem is software or hardware related.



TOOLS:

[Outil pour ouvrir iFixit](#) (1)
[Pincettes de précision](#) (1)
[Tournevis Torx T3](#) (1)
[Spudger \(spatule antistatique\)](#) (1)



PARTS:

[Moto G4 Front Camera](#) (1)

Step 1 — Back Cover



- Insert a fingernail or a spudger into the notch on the bottom edge of the phone, near the charge port.
- Gently twist or pry to open a small gap between the back cover and the body of the phone.
- While keeping your tool (or fingernail) inserted into the gap between the back cover and the body of the phone, slide it around the corner to begin loosening the plastic clips holding the cover in place.

Step 2



- Slide your tool all along the side of the phone to separate more of the clips securing the back cover.

Step 3




- Keep your tool inserted slightly under the back cover, and slide it around the top corner.
- If necessary, continue prying around the remaining edges of the phone until the back cover comes free.

Step 4



- Remove the back cover.

 To install the back cover, carefully position it over the phone and then press gently all around the edges until you feel the clips snap into place.

Step 5 — Midframe



- Push to eject and remove the MicroSD and SIM cards (if installed).

Step 6



- Use a spudger to pry up the rubber cover for the camera flash connector.

Step 7



- Remove the rubber cover.

Step 8



- Use a spudger to disconnect the camera flash connector by prying it straight up.

Step 9



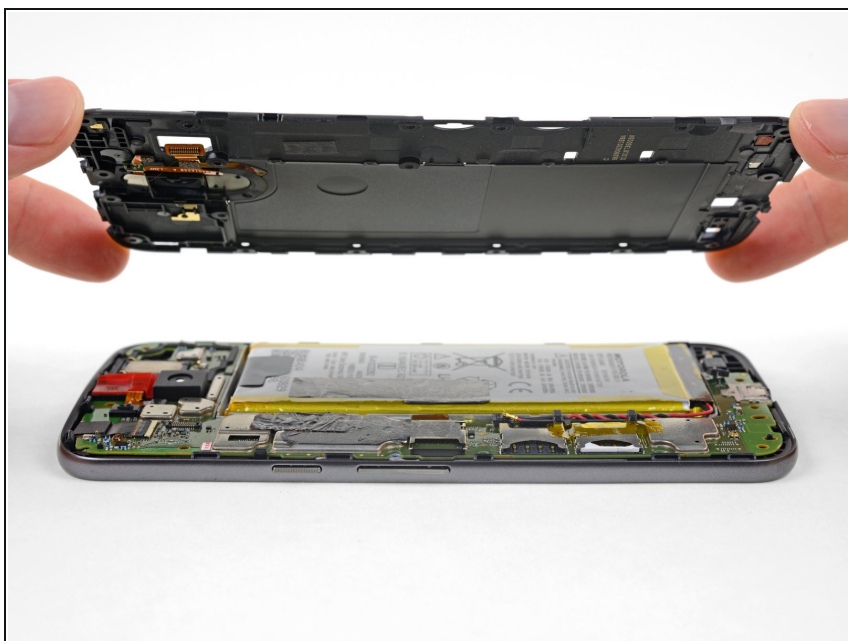
- Use a T3 Torx driver to remove the nineteen identical 3.1 mm screws securing the midframe.

Step 10



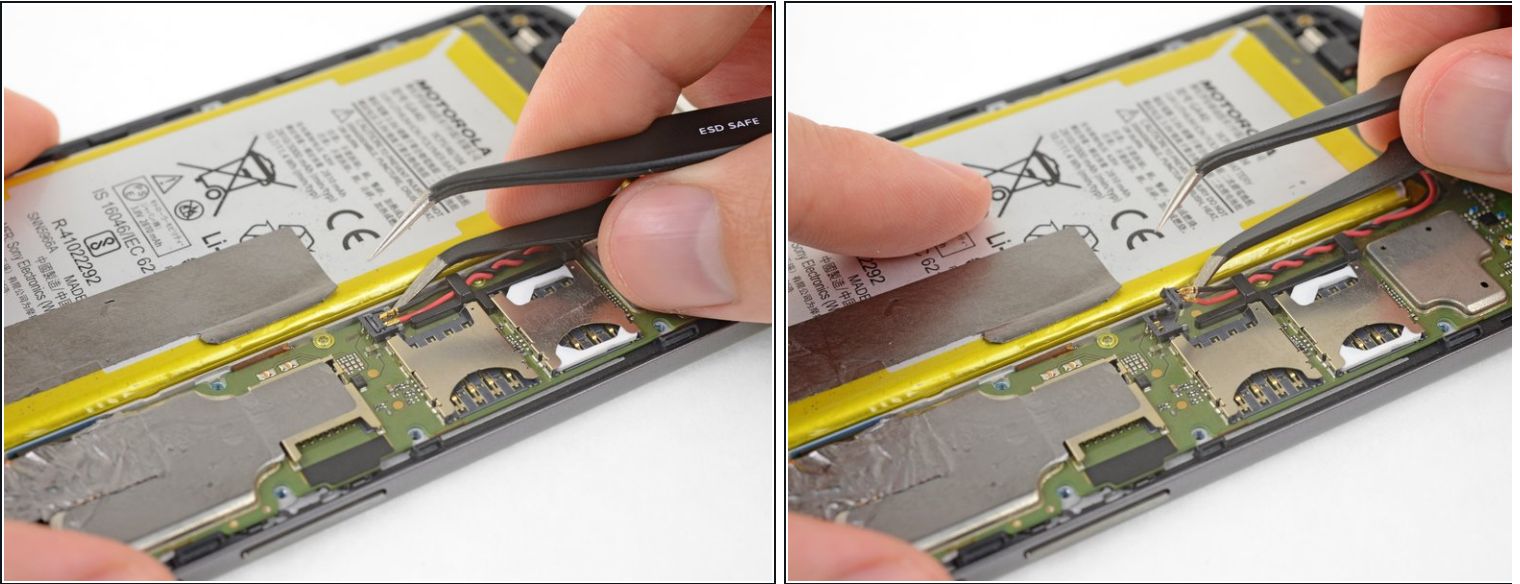
- Insert a spudger under the midframe at the top left corner, and gently twist to separate it from the body of the phone.

Step 11



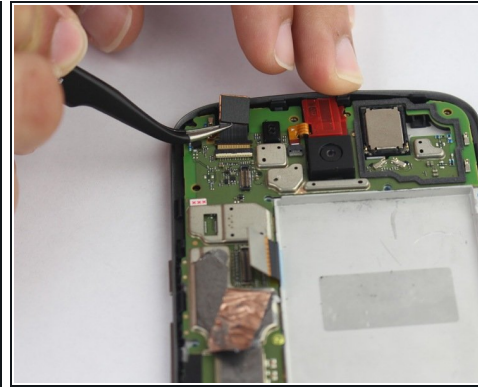
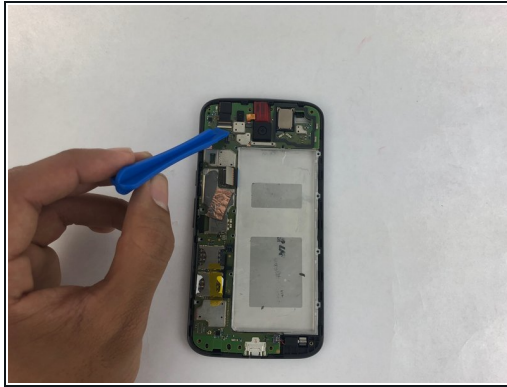
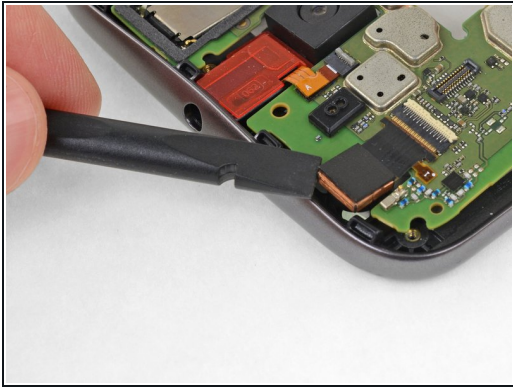
- Remove the midframe.

Step 12 — Battery Disconnection



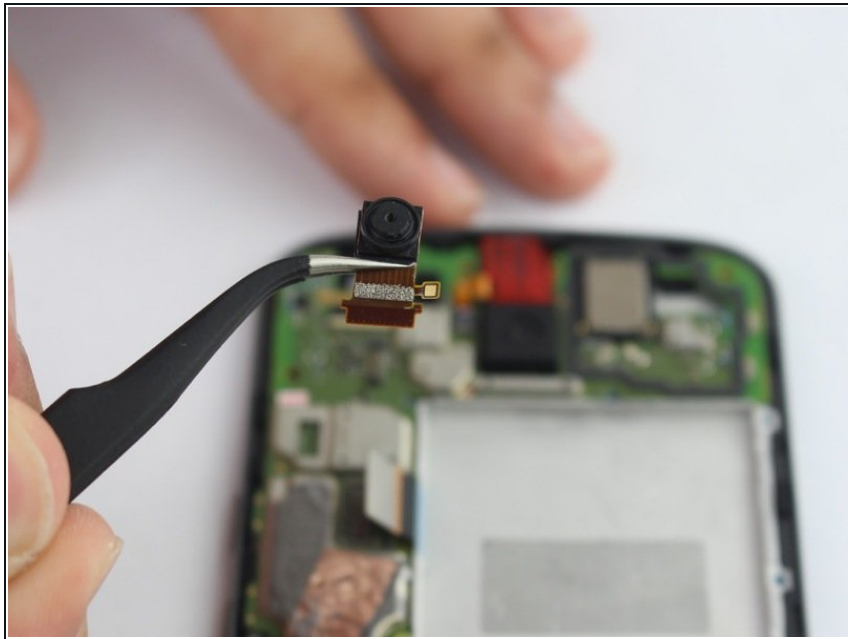
- Insert a thin tool (such as one of your tweezer tips) under the red and black battery wires, and slide it underneath the battery connector.
 - Gently pry straight up to disconnect the battery.
- ⚠ Pry only from the side where the wires attach to the connector—if you pry anywhere else, you may break the socket.
- ✦ During reassembly, align the connector in its socket and then press straight down to reconnect it, wiggling slightly as you press to help it seat correctly.

Step 13 — Front-facing Camera



- i** It's not necessary to remove the battery in order to replace the front-facing camera; you can safely ignore the fact that the battery is missing in these images.
- Use your spudger to pry up the front-facing camera and make sure it separates safely from the frame.
 - Peel back and remove any tape covering the front-facing camera's flex cable connector.
 - Pry up with your spudger or other ESD-safe tool to flip open the locking flap on the front-facing camera's [ZIF connector](#).
 - Gently pull the camera's flex cable free from the ZIF socket.

Step 14



- Remove the front camera.

To reassemble your device, follow these instructions in reverse order.