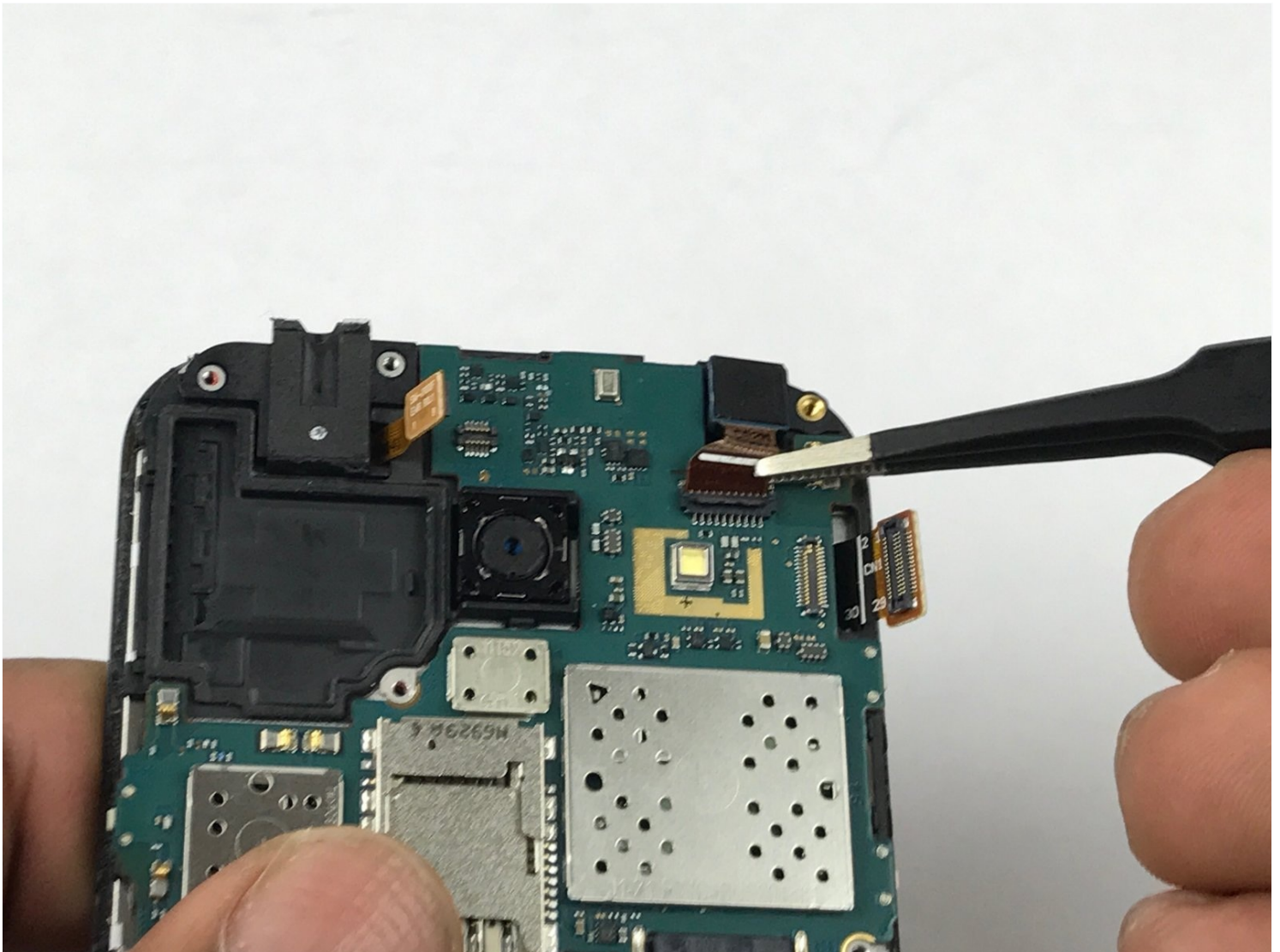




Samsung Galaxy J1 Front-Facing Camera Replacement

Outline what you are going to teach someone how...

Written By: Sean Kramer



INTRODUCTION

Outline what you are going to teach someone how to do.

TOOLS:

Phillips #00 Screwdriver (1)

iFixit Opening Tool (1)

Spudger (1)

Step 1 — Midframe



- Insert a finger nail or plastic opening tool between the back cover and the device.
- Gently pry the rear cover off of the back of the phone.

Step 2



- Using a finger, pull the SIM card down out of its slot.
 - Remove the SIM card.
- ❗ The pictured device is missing the SIM card and battery.

Step 3



- Using a Phillips #00 screwdriver remove the eleven 3 mm screws.

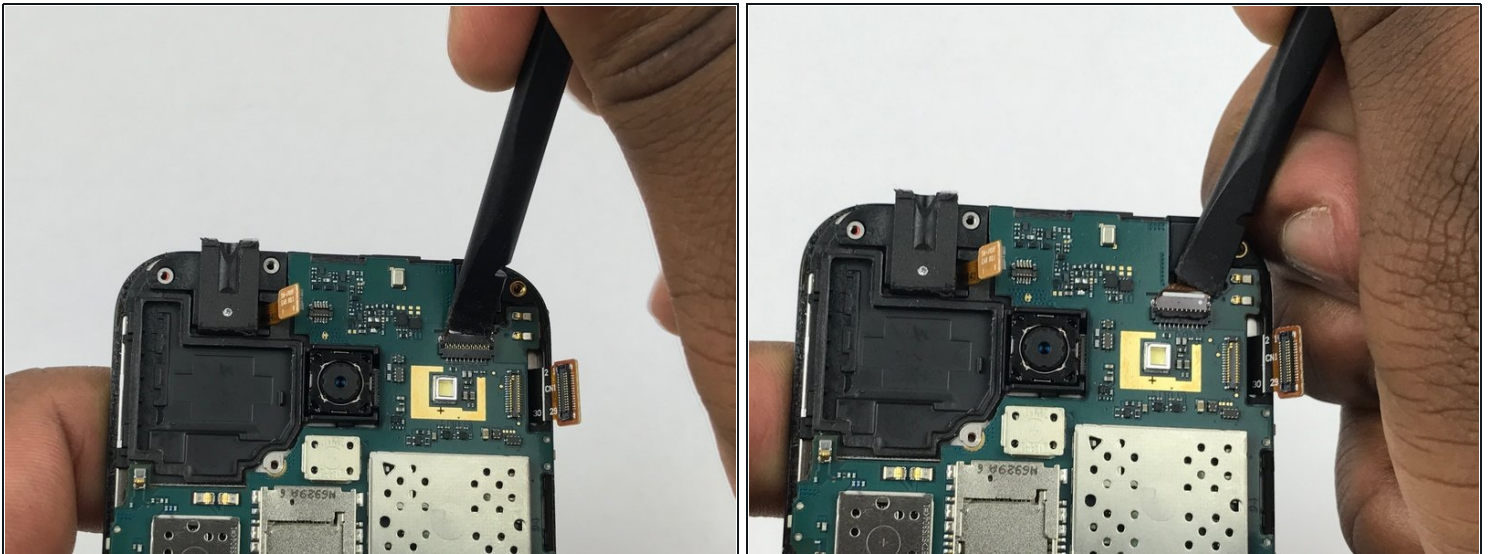
Step 4



- Insert a plastic opening tool between the screen and the back of the device.
- Starting at the bottom of the device, gently slide the tool along the edges of the screen.
- Gently pry the main assembly from the midframe of the device.

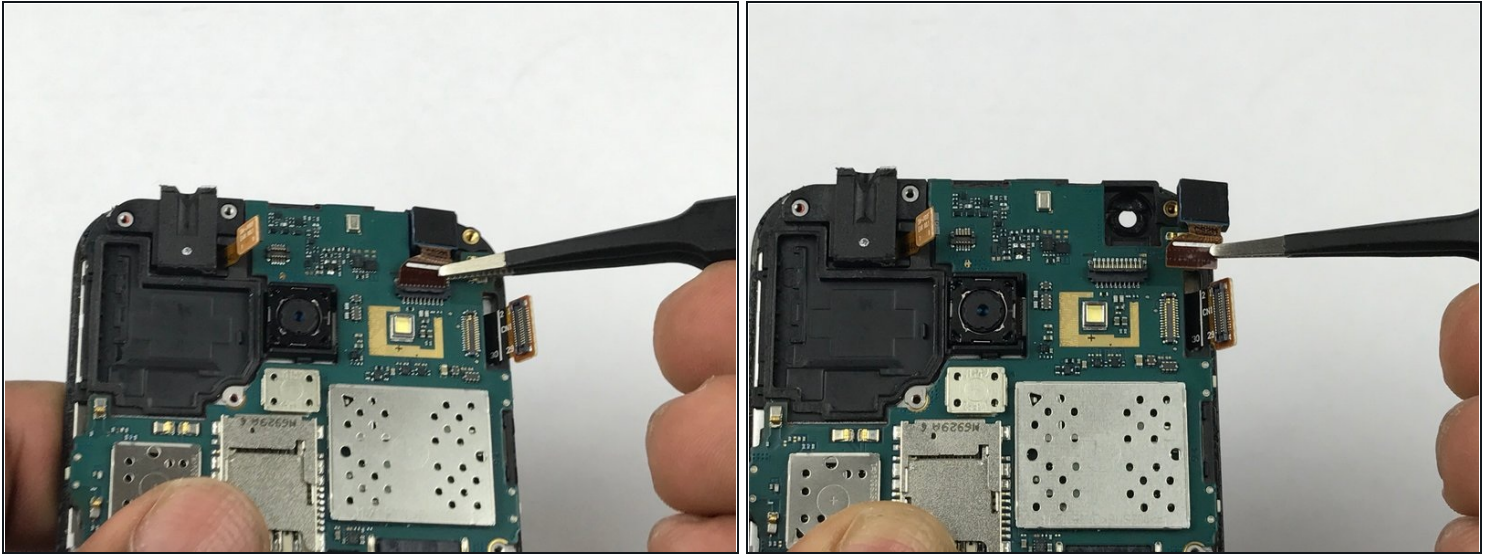
⚠ When removing the main assembly, pry gently so as to not crack the glass screen or break any clips within the device.

Step 5 — Front-Facing Camera



- Use the flat end a spudger to disconnect the front-facing camera cable connector.

Step 6



- Using [tweezers](#), or your fingers, remove the front-facing camera.

To reassemble your device, follow these instructions in reverse order.