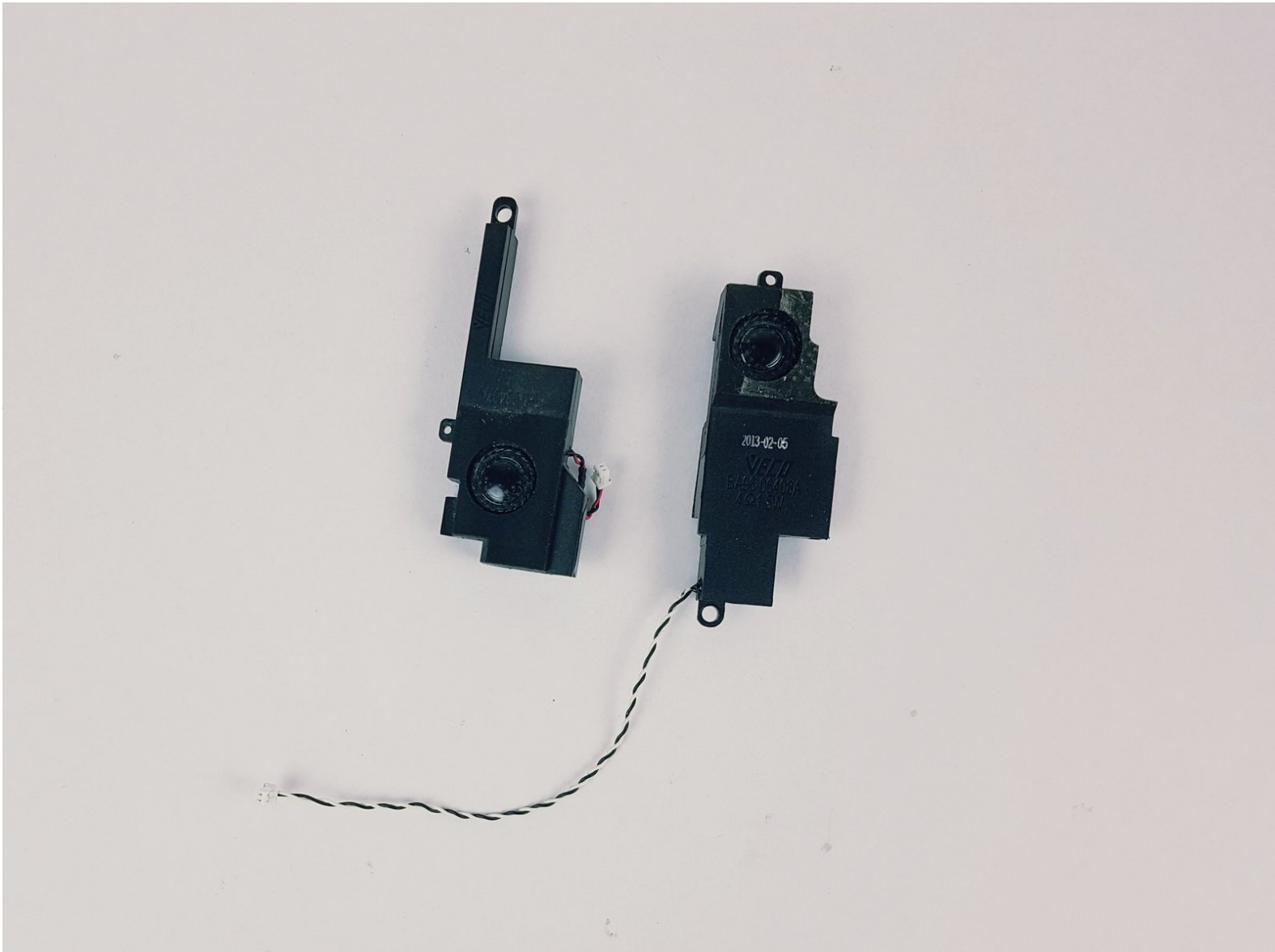




# Samsung NP510R5E-A01UB Speaker Replacement

This guide will show you how to replace the speaker for a Samsung NP510R5E-A01UB.

Written By: Brian Briggs



## INTRODUCTION

The speaker is responsible for the output of audio from the device. Signs of a faulty speaker could be no or distorted audio. This guide will show you how to replace it properly.



### TOOLS:

- [Phillips #0 Screwdriver](#) (1)
- [iFixit Opening Tools](#) (1)



### PARTS:

- [Samsung NP510R5E-A01UB Speaker](#) (1)

## Step 1 — Hard Drive



⚠ Make sure the device is powered off before beginning.

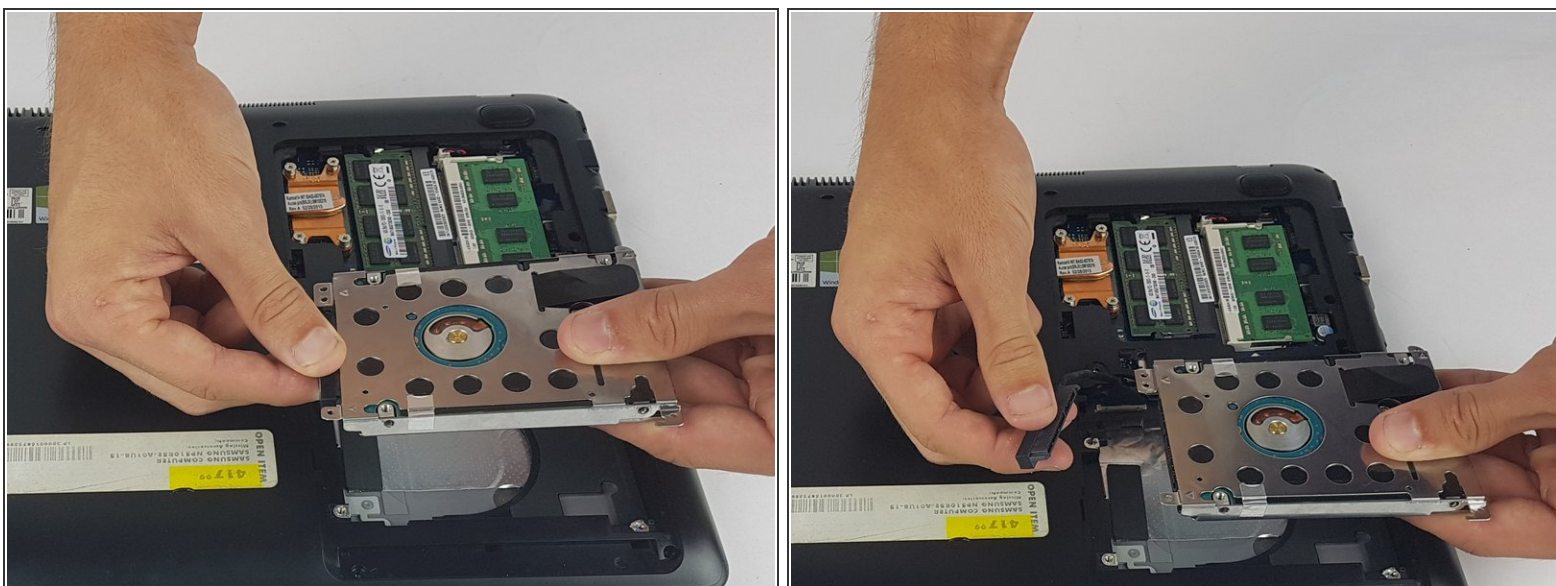
- Using the Phillips #0 screwdriver, remove the 6.5mm long screw in the area circled.

## Step 2



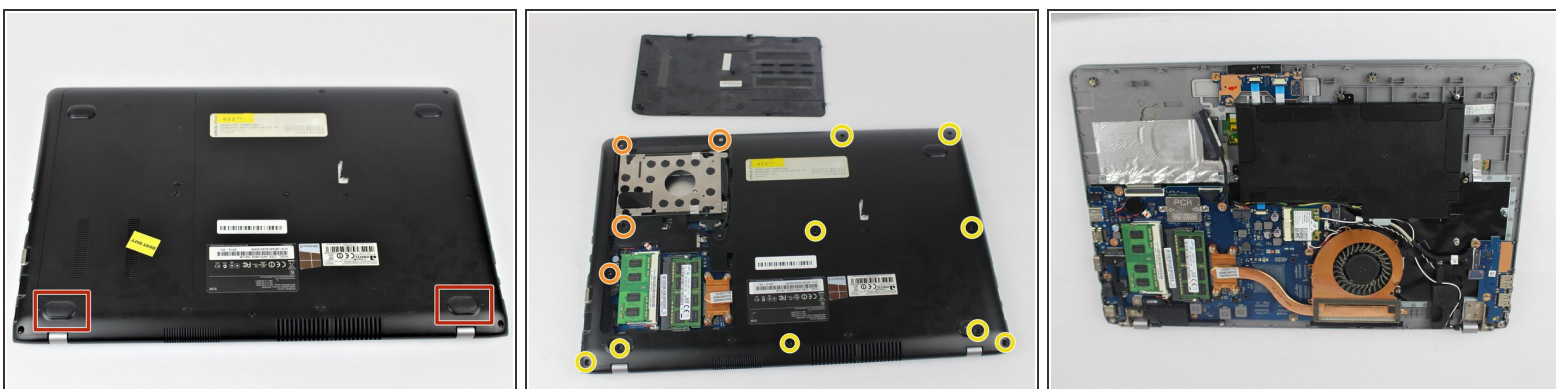
- With the cover removed, unscrew all four of the 4.75mm long screws using the Phillips #0 screwdriver.

### Step 3



- Unplug the connector from the hard drive by pulling straight out.

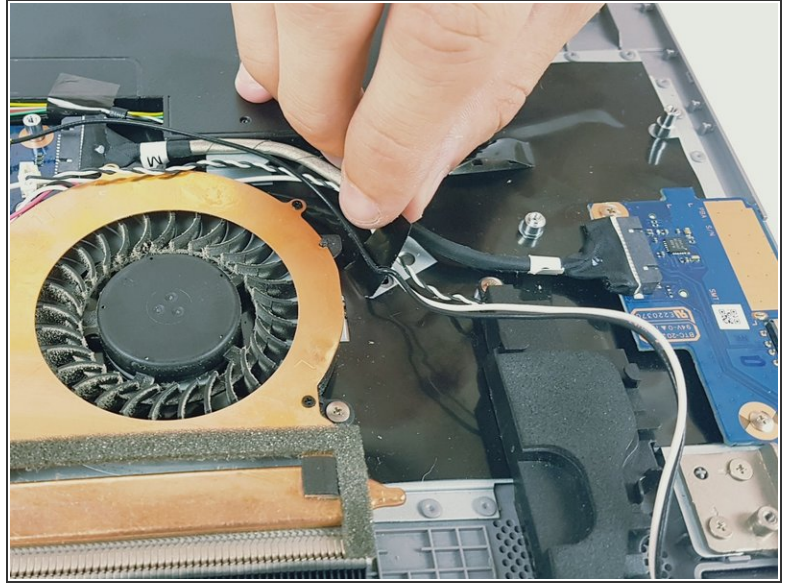
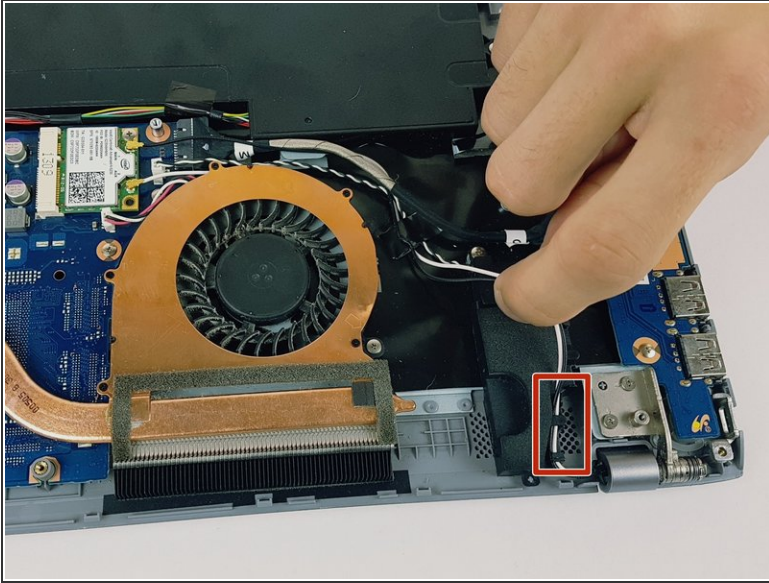
### Step 4 — Speaker



- Remove the two rubber feet with arrows by them on the back side to uncover two screws.
- Unscrew the four silver 4.4mm long screws near the hard drive.
- Unscrew the remaining nine black 6.5mm long screws. Then remove the back casing using a pry tool if needed.

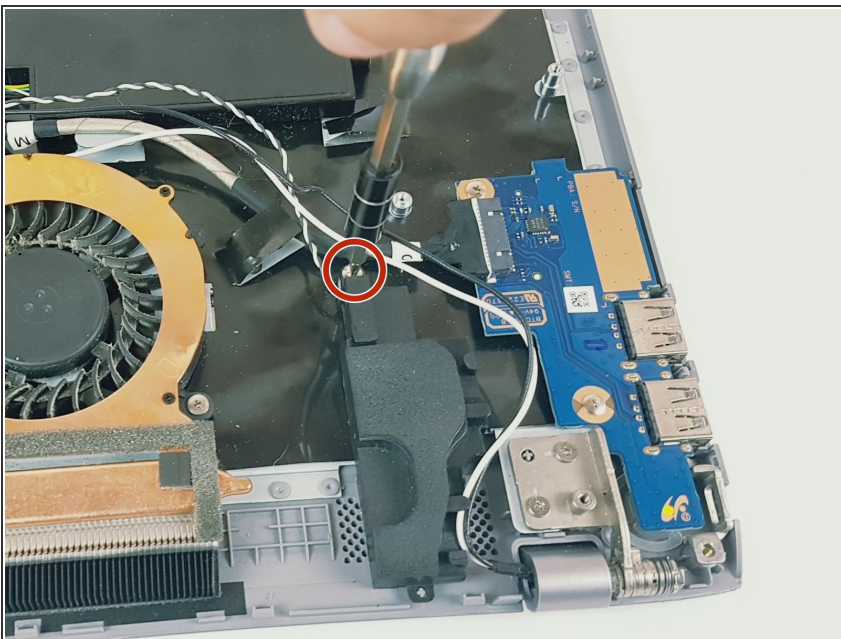


## Step 5



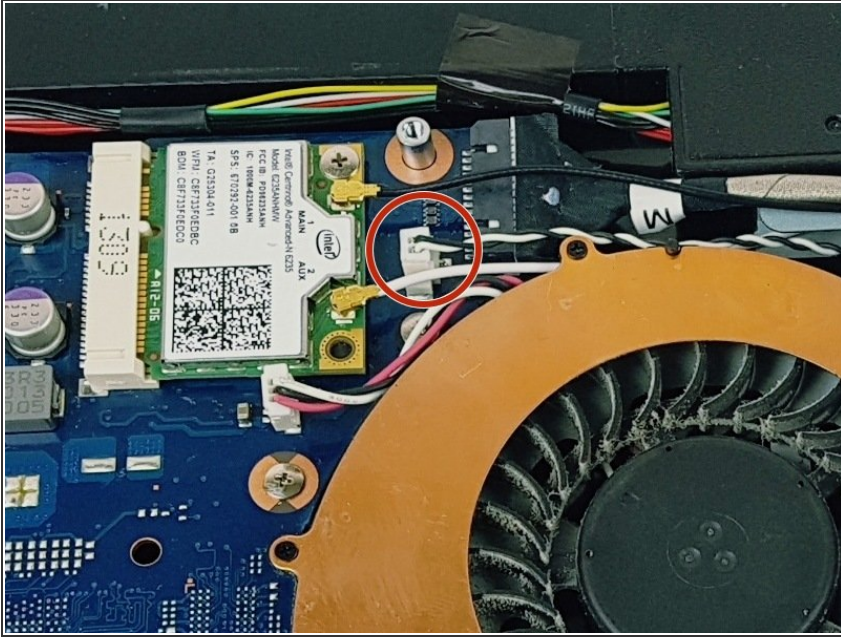
- Untangle the wires attached to the exterior of the right speaker.
- Lift the tape up holding the wires down to fully release the wires.

## Step 6



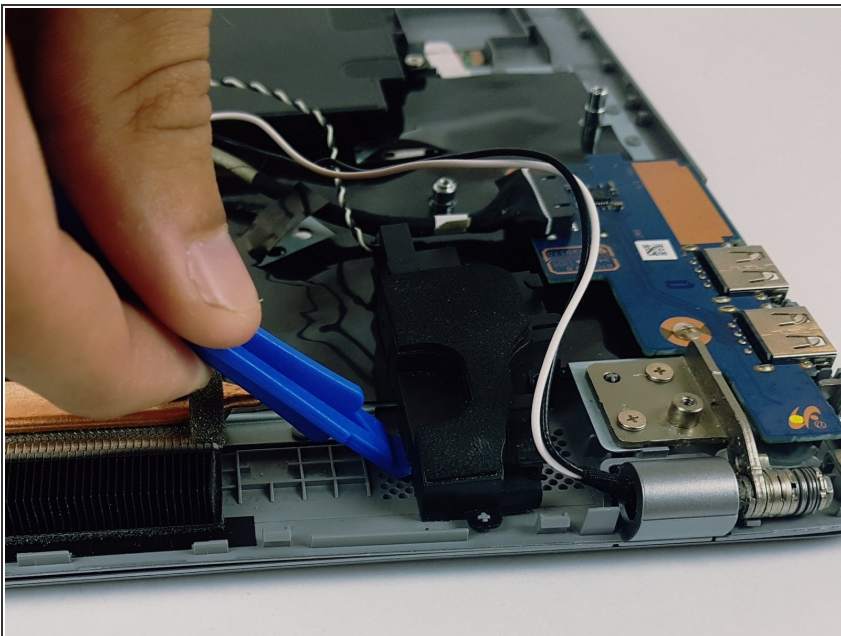
- Unscrew the 3.4mm long screw holding the right speaker in place.

## Step 7



- Pull up on the wires circled to disconnect the right speaker.

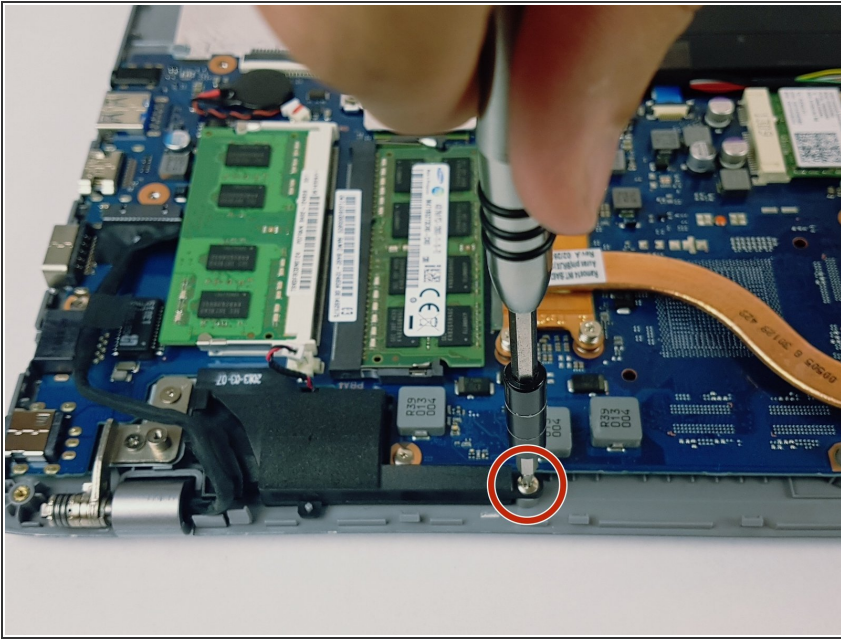
## Step 8



- Using the plastic opening tool, pry up the right speaker and take it out.

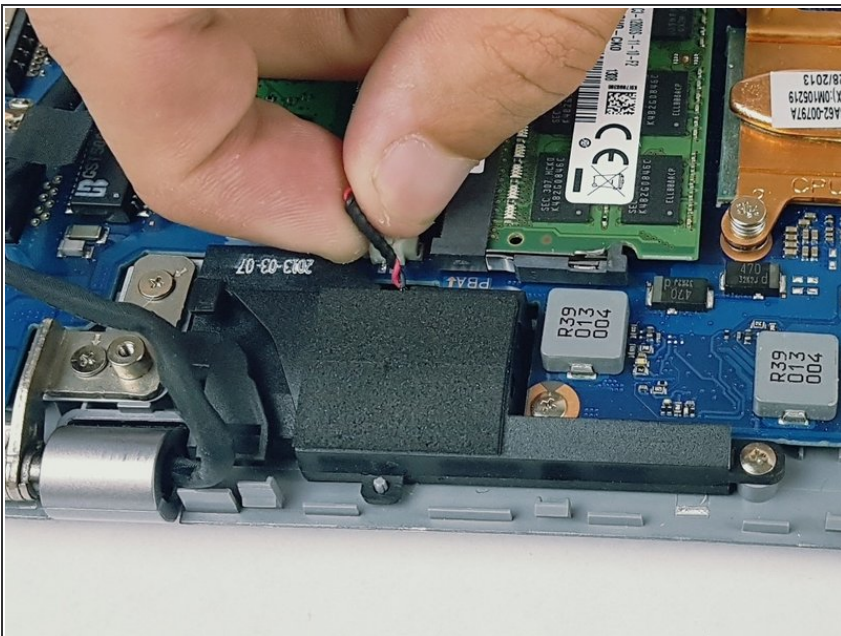


## Step 9



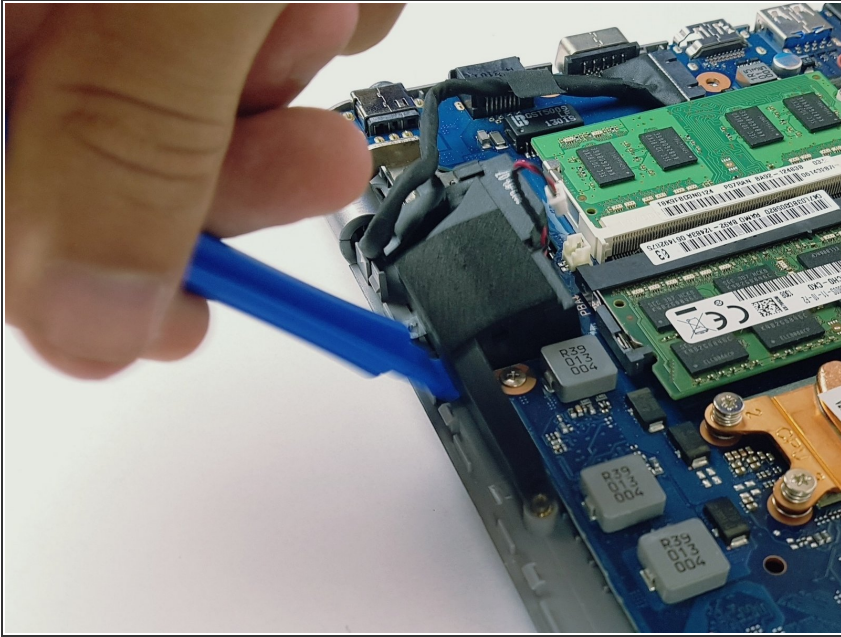
- Unscrew the 3.4mm long screw holding the left speaker in place.

## Step 10



- Pull up on the wires to disconnect the left speaker.

## Step 11



- Using the plastic opening tool, pry up the left speaker and take it out.

To reassemble your device, follow these instructions in reverse order.