



Samsung SCV-VLUUST50 Cover Replacement

This is a disassembling guide for the front and back covers of the Samsung SCV-VLUUST50.

Written By: Jade Withrow



INTRODUCTION

The disassembly of the covers will be needed to replace/repair anything on the Samsung SCV-VLUUST50, not including the battery.



TOOLS:

- [Phillips #00 Screwdriver](#) (1)
 - [Magnetic Project Mat](#) (1)
-

Step 1 — Cover



- Unscrew all visible screws indicated by red circles with a #00 Phillips driver.
- Slide memory card cover and unscrew hidden screw underneath with a #00 Phillips driver.

Step 2



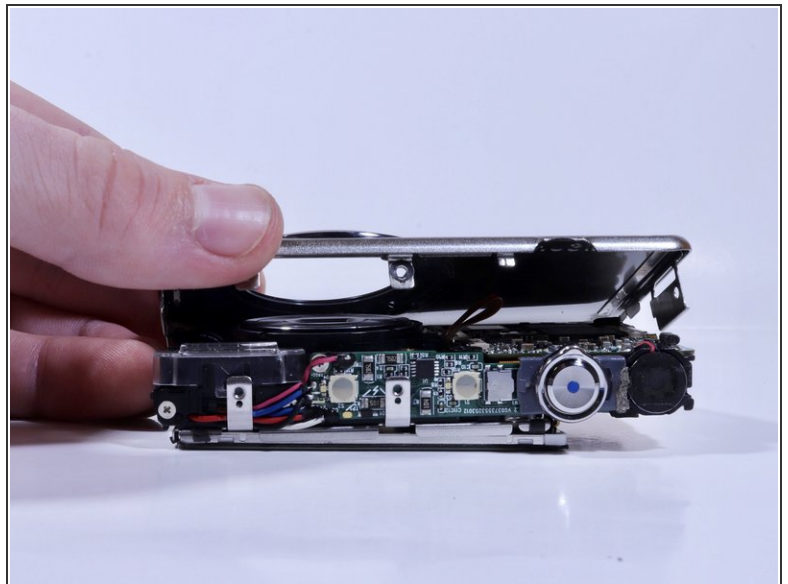
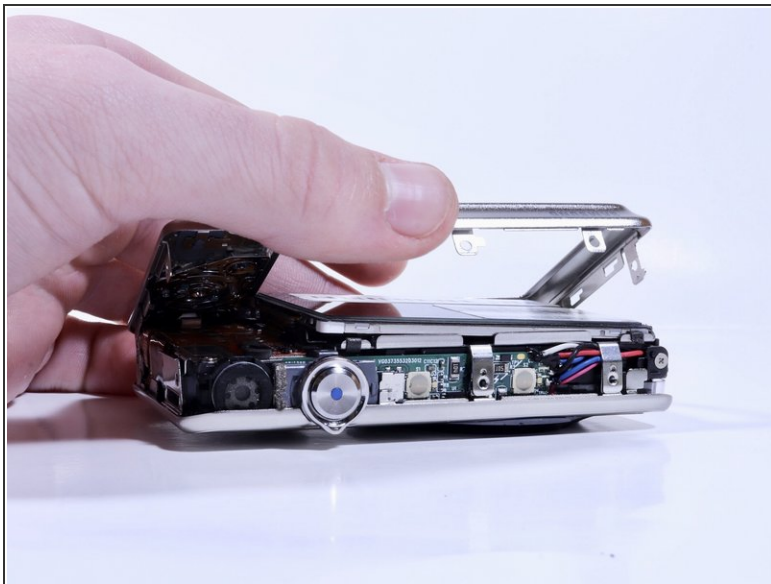
- Remove the flat side panel by applying gentle pressure toward the bottom of the camera.
- Remove the corner panel by applying pressure away from the shutter button.
- ⓘ The memory card cover will come off with the corner panel.
- Remove the top panel by applying gentle pressure away from the shutter button.

Step 3



- Remove screws beneath the top panel indicated by red circles with a #00 Phillips driver.

Step 4



- Remove the front and back covers by pulling them straight apart.

To reassemble your device, follow these instructions in reverse order.