



Disassembling Samsung Galaxy Ace Logic Board

How to dissamble the phone for logic board reworking

Written By: finster





TOOLS:

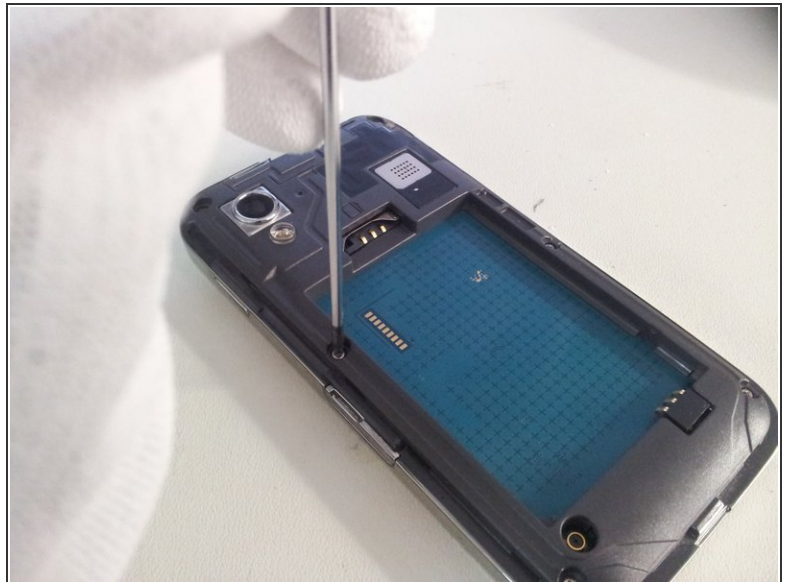
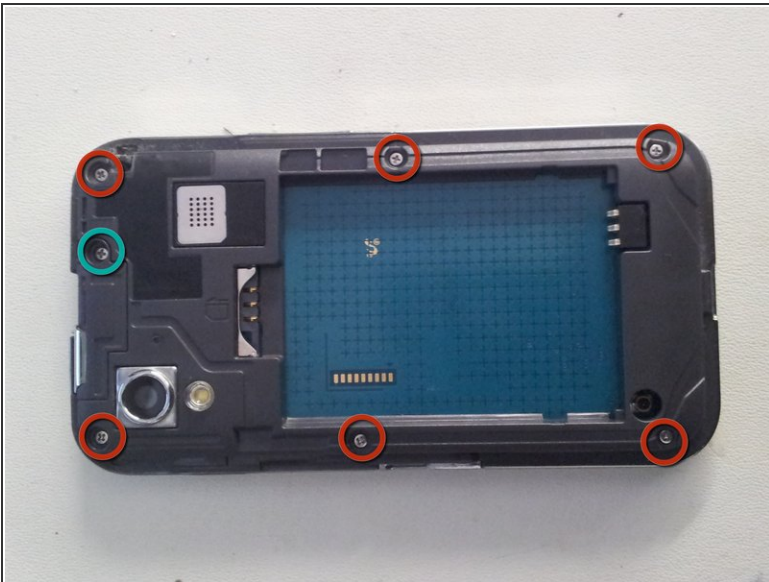
- [Spudger](#) (1)
 - [Phillips #00 Screwdriver](#) (1)
 - [Tweezers](#) (1)
-

Step 1 — Logic Board



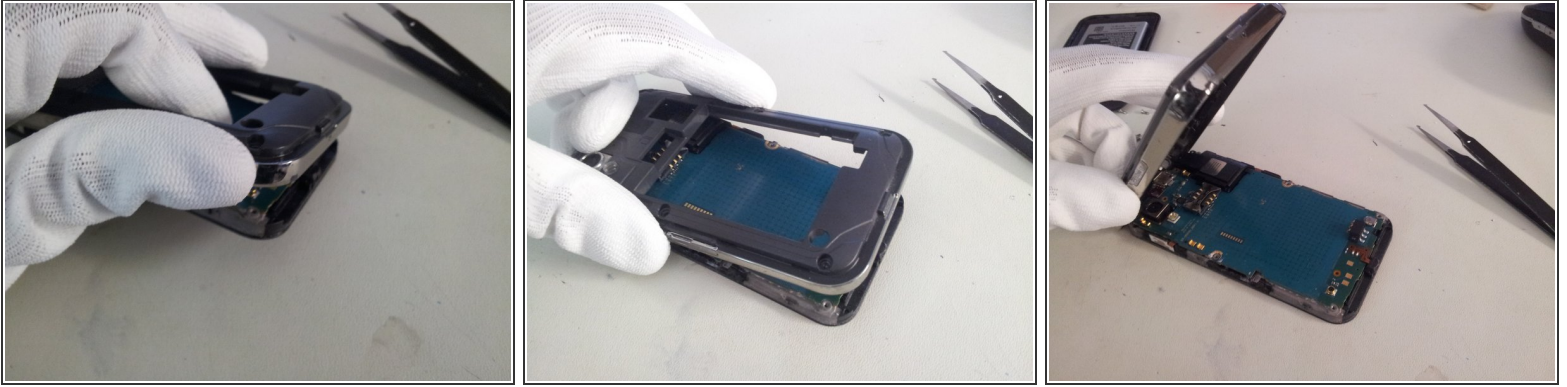
- Remove the battery cover and the battery

Step 2



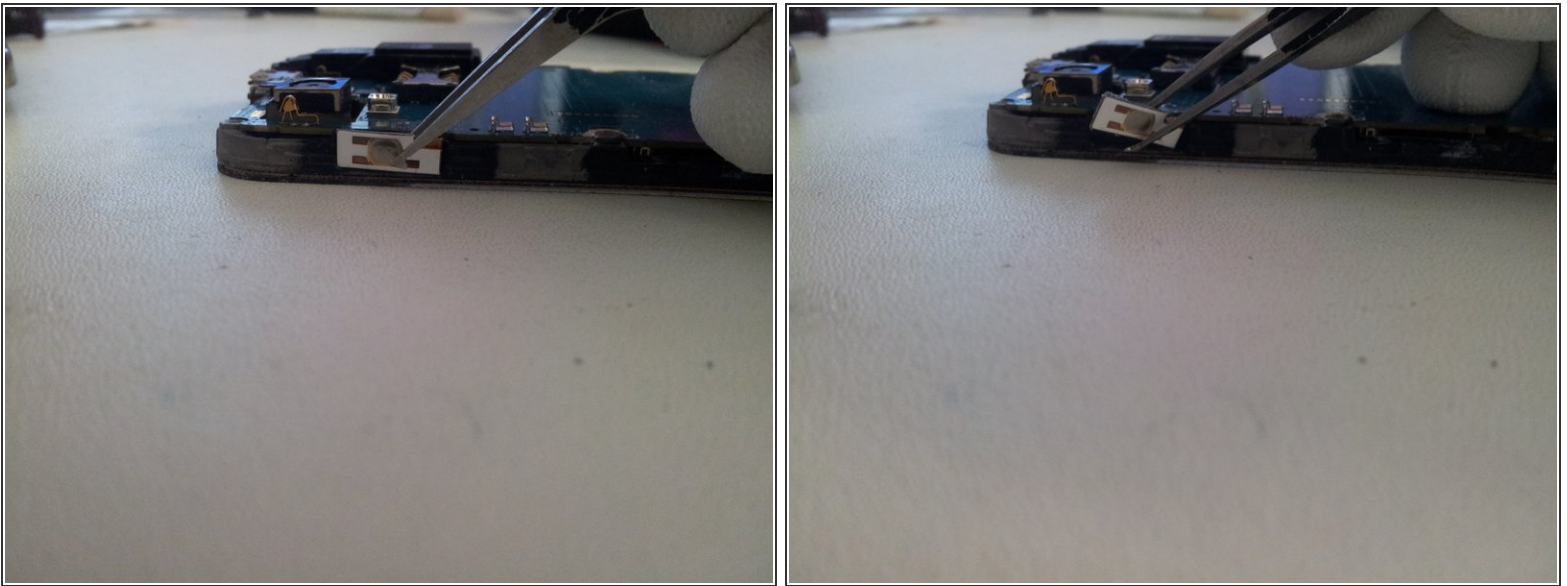
- Remove the 7 silver screws with a Phillips #000 screw driver.
- i Sometimes the green one could be a little difficult. Use a tweezer for get it out.

Step 3



- Lift gently the back cover from the screen assembly from the bottom.

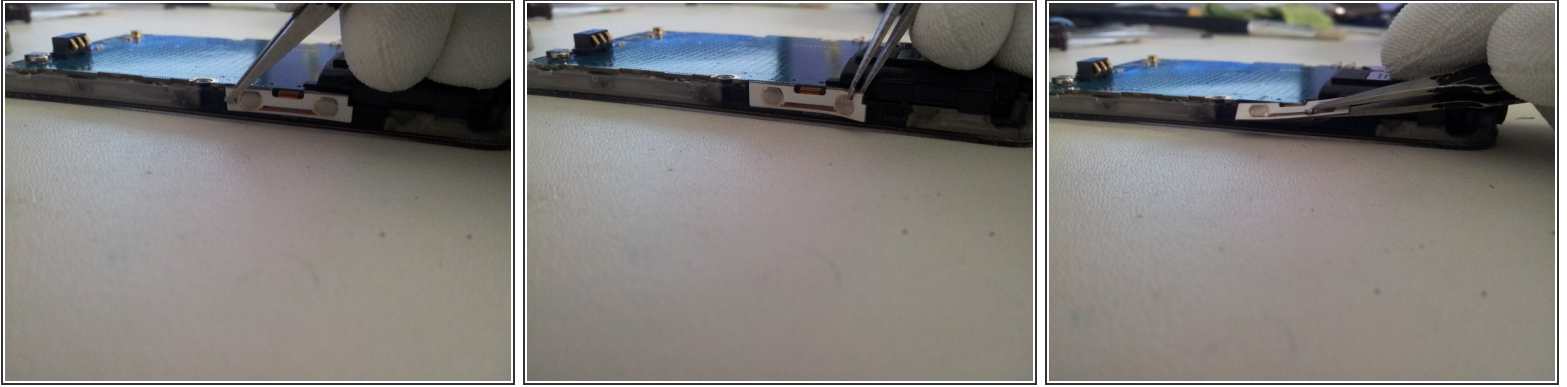
Step 4



- Use a flat tweezer for take off the flexible on/off button from the frame.

⚠ Be careful, the flexible is very delicate; it could be cut if you go too fast.

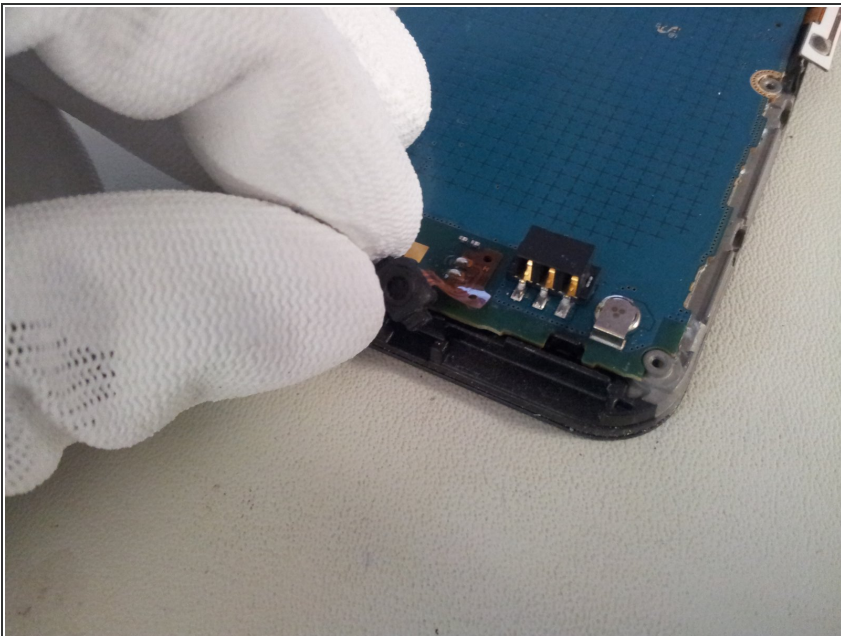
Step 5



- Use a flat tweezer and take off gently Flexible volume button from the left side.
- Do the same for the right side.

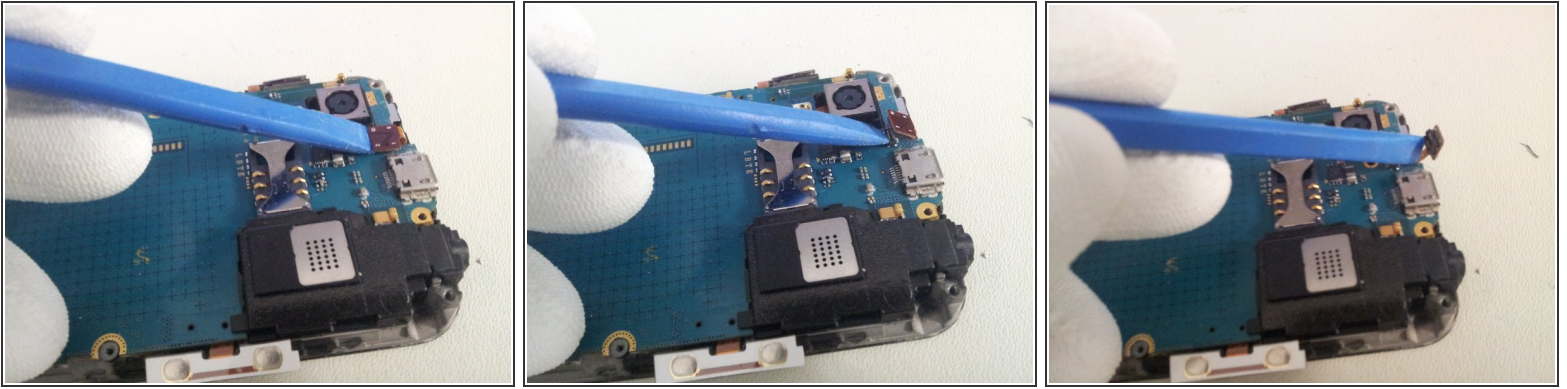
⚠ Then lift the flex slowly, if you go fast you may cut the cable.

Step 6



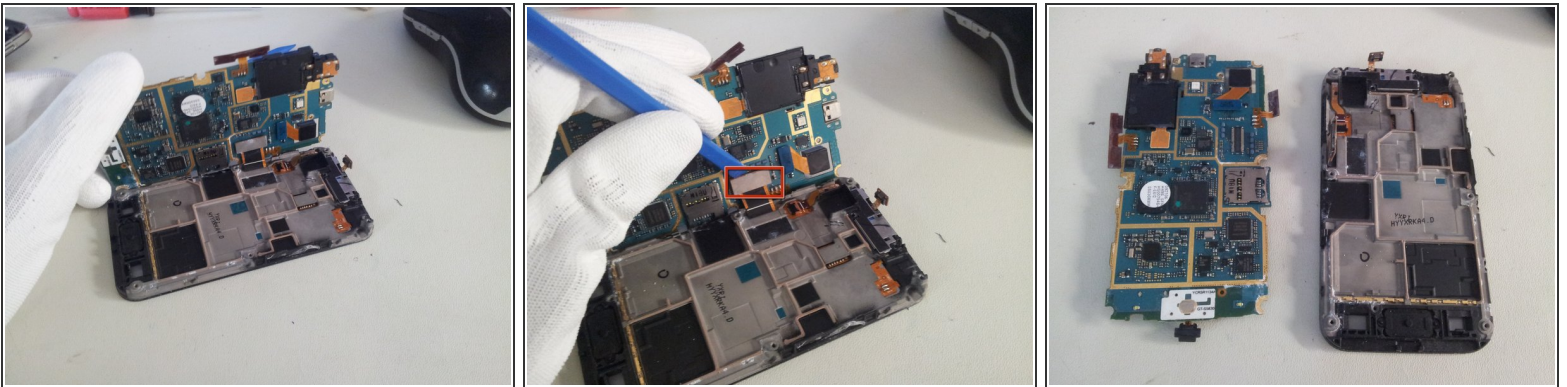
- Lift the microphone from the logic board.

Step 7



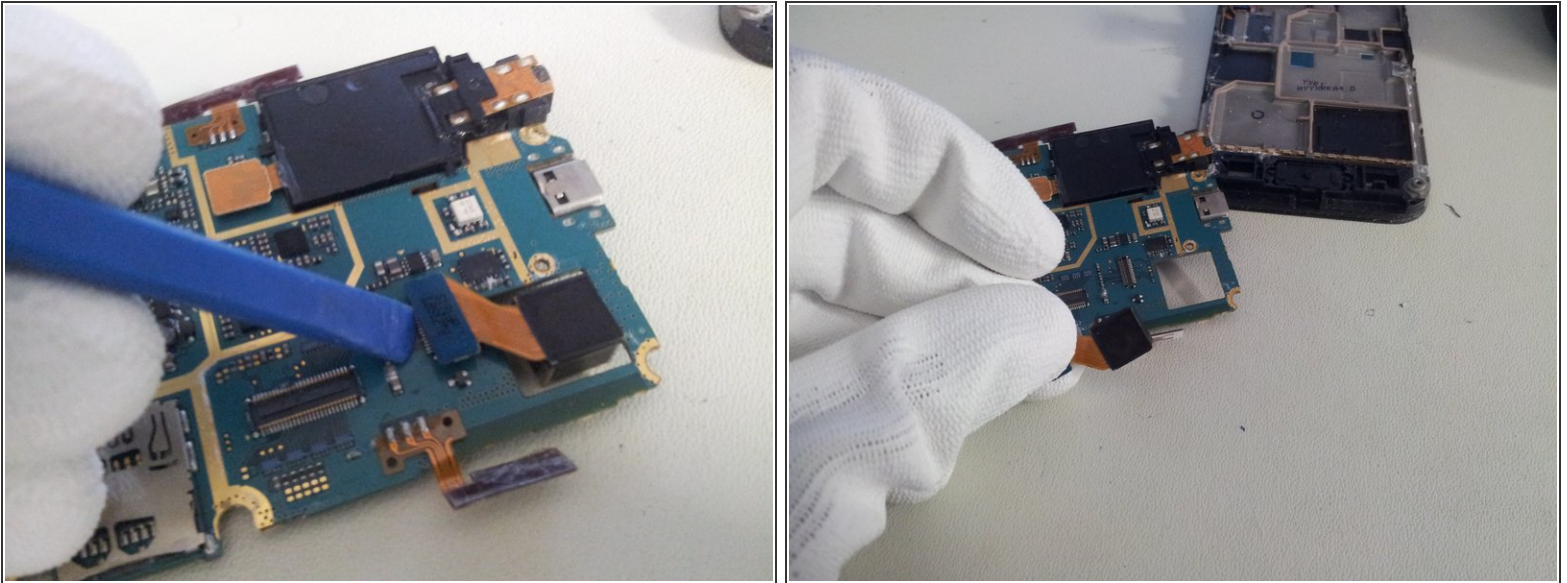
- Lift the sensor/earpiece cable with the opening tool.
- Don't force, you may damage the soldering.

Step 8



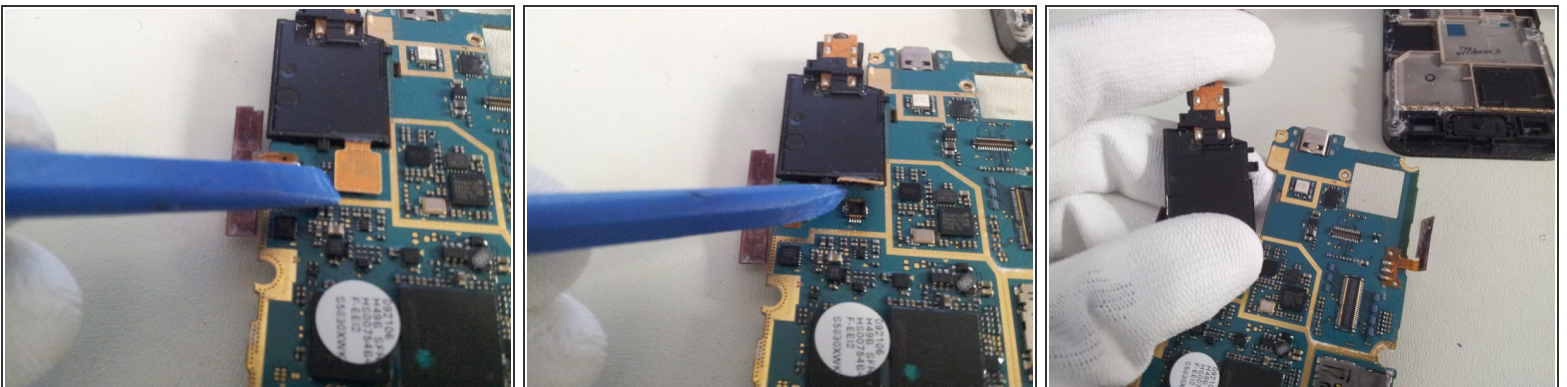
- Lift the logic board from the right side.
- Use the removal tool to unplug the display cable from the logic board.
- You can now separate the Logic board from the display assembly.

Step 9




- Use the removal tool to unclip the camera module from the Logic board.

Step 10



- Use the removal tool or a spudger to unplug speaker module cable
- And separate the speaker module from Logic board.

 Be caution, the module is fixed by plastic teeth to the Logic board. Don't force, just make little wave-movements and the speaker comes on his own.

Step 11



- Now you can work with the Logic board.

To reassemble your device, follow these instructions in reverse order.