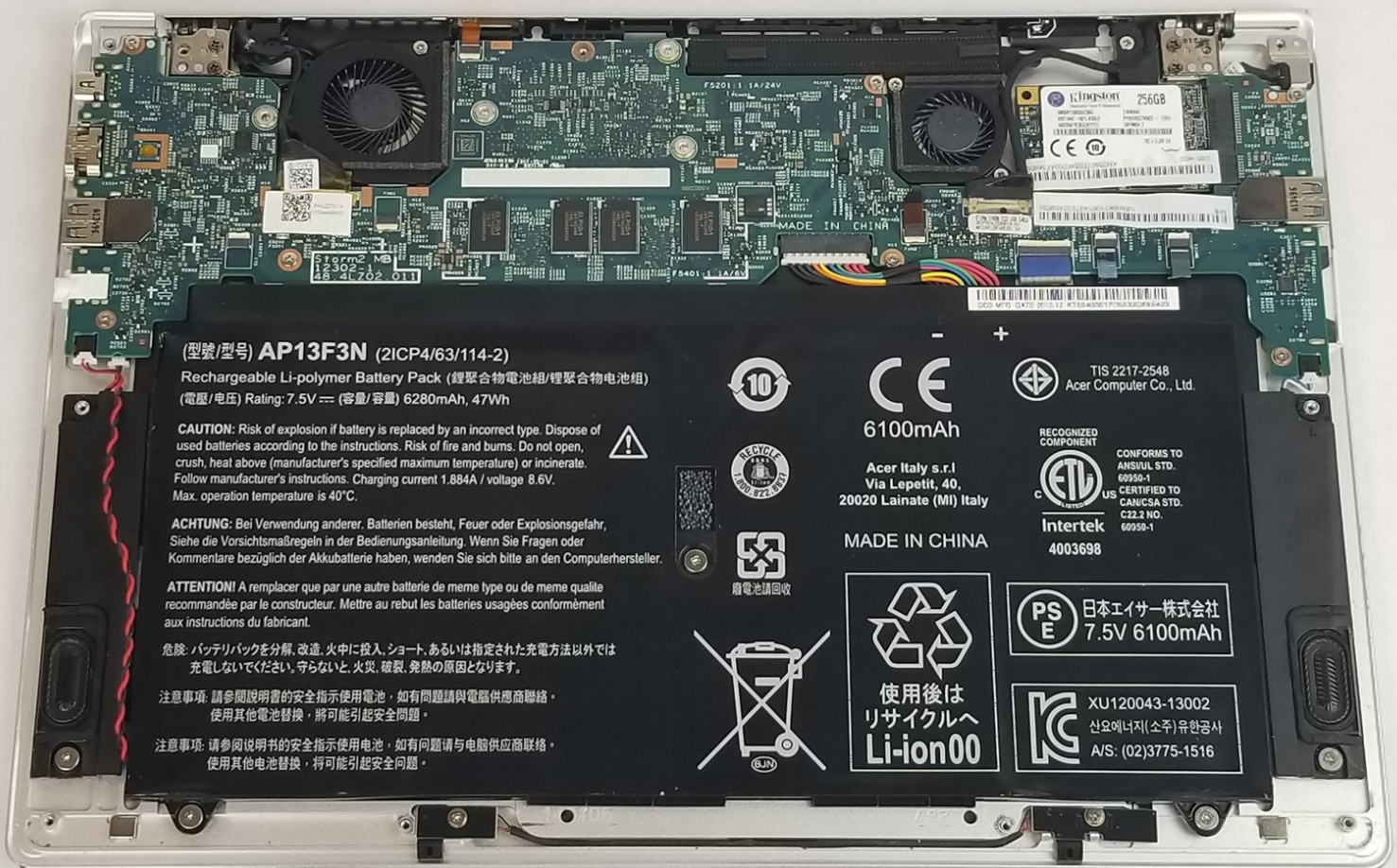




# Acer Aspire S7-392-6484 Motherboard Replacement

Replace the motherboard to return full functionality to your Acer Aspire.

Written By: Nicholas Wise



---

## INTRODUCTION

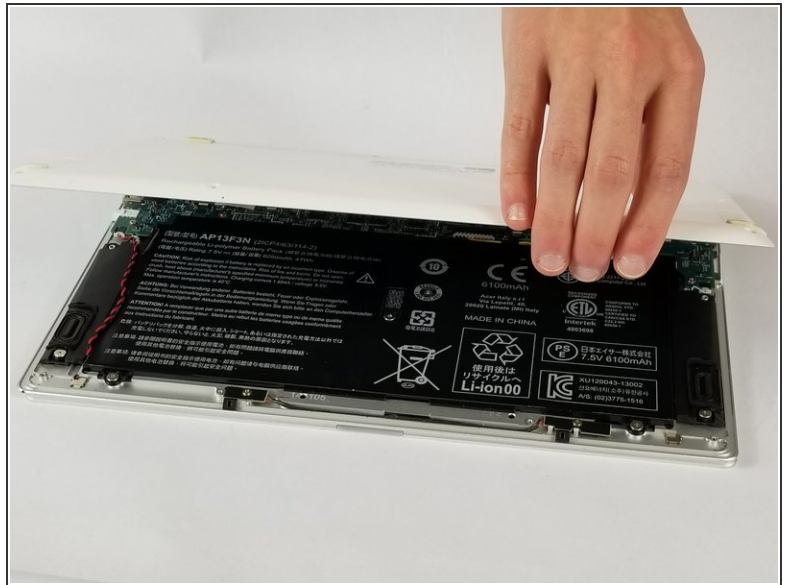
In this guide you will be shown how to replace the motherboard in the Acer Aspire. The motherboard is the most essential part of a computer and is paramount to the functions of your device. To determine whether the motherboard needs to be replaced, please refer to the troubleshooting page of this device.



### TOOLS:

- [Phillips #1 Screwdriver](#) (1)
  - [T6 Torx Screwdriver](#) (1)
  - [iFixit Opening Tools](#) (1)
-

## Step 1 — Battery



- Remove all marked 3mm screws from the back panel of the device using a T6 Torx screwdriver.
- Remove the orange marked screws using a T6 Torx screwdriver. Note that these screws are 4mm in length.
- After all marked screws have been removed, lift up back panel to expose internal parts.

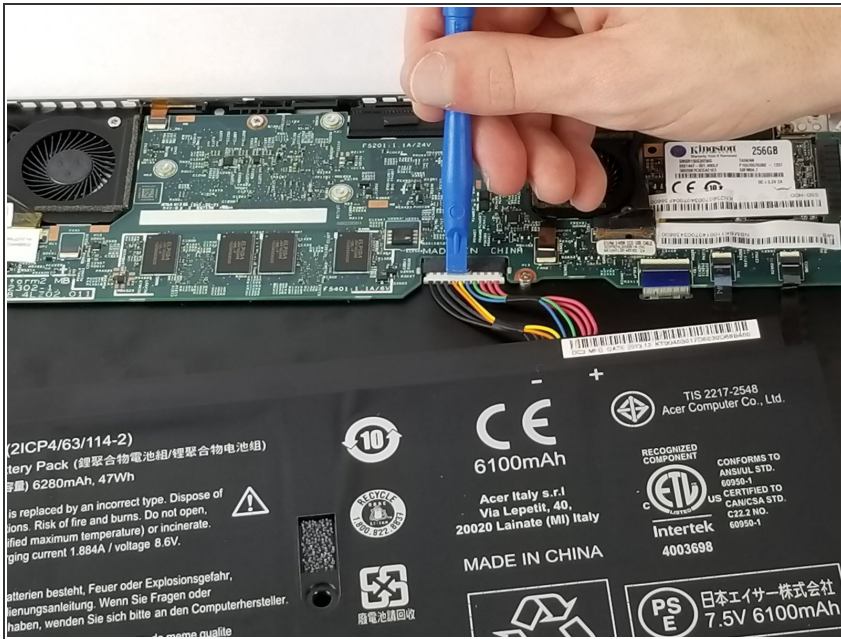
## Step 2



- Unscrew the marked 1.5 mm screws with a Phillips #01 screwdriver.

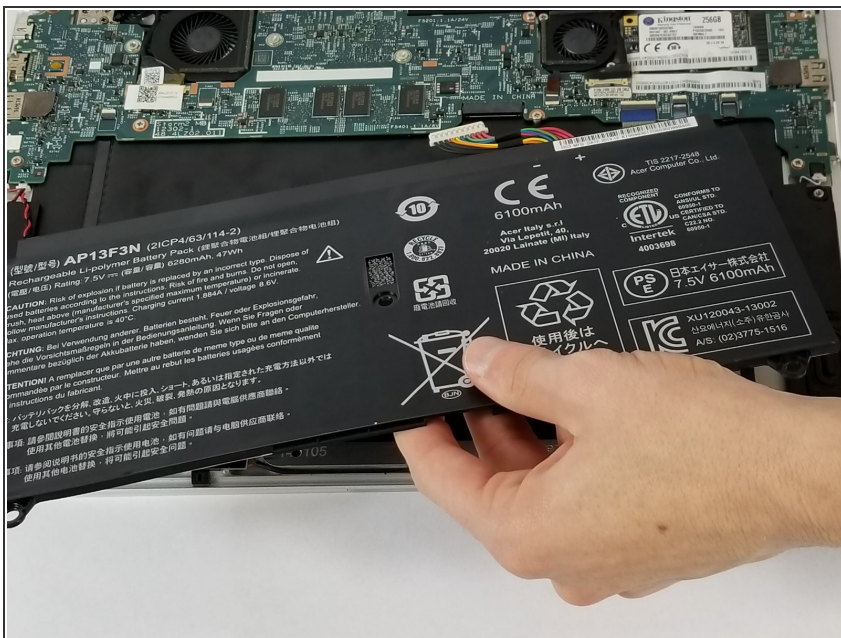


## Step 3



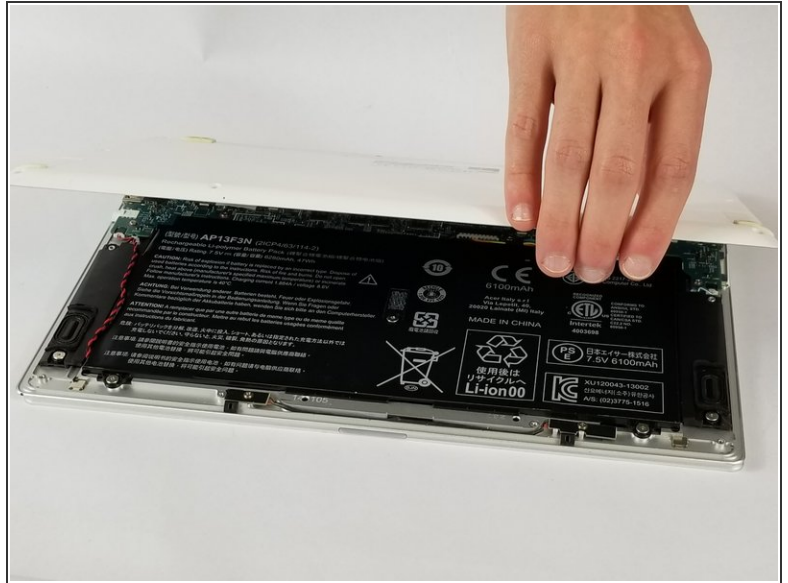
**⚠** Disconnect the cable located at the top of the battery. Be careful to pull the cable horizontally, not vertically.

## Step 4



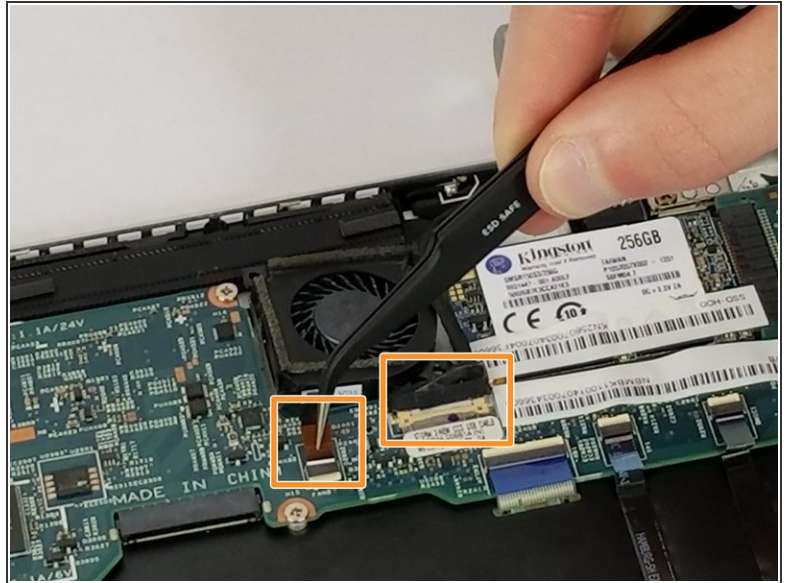
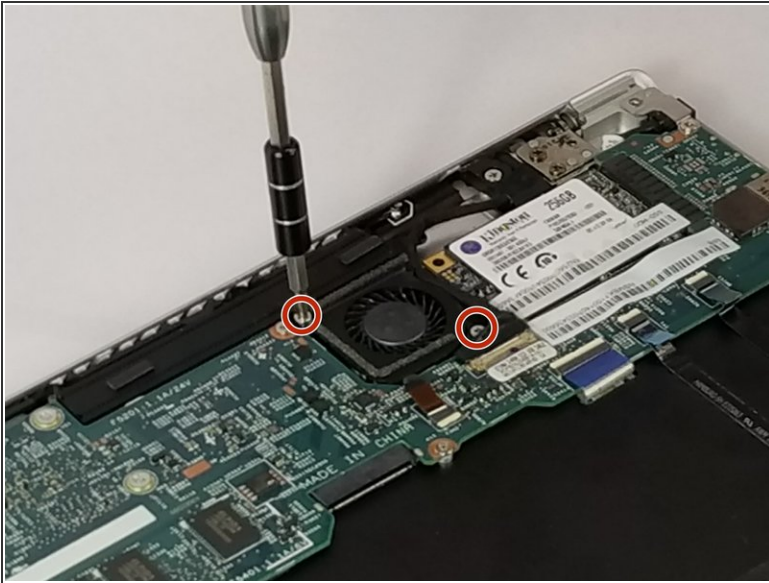
● Remove the battery.

## Step 5 — Fan



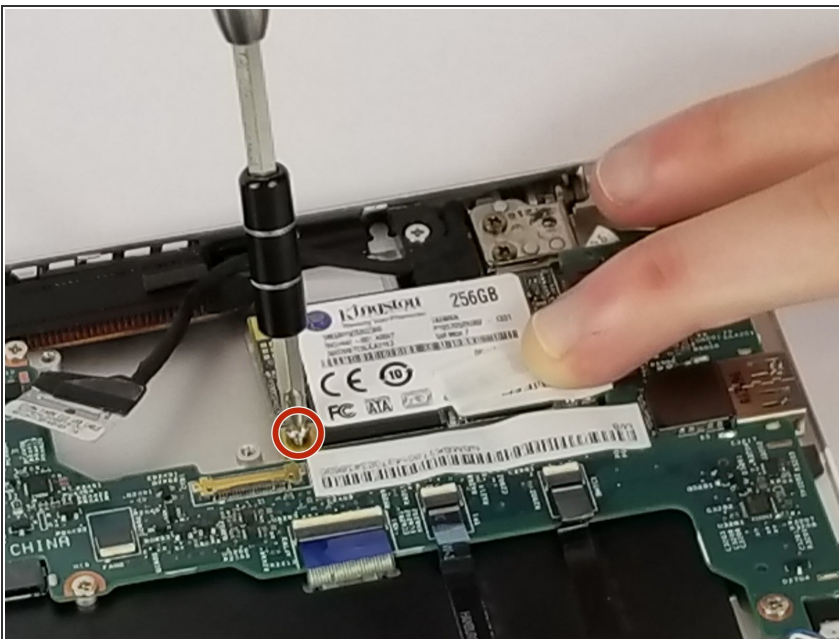
- Remove the back panel by unscrewing all marked 3mm screws with a T6 Torx screwdriver.
- Remove these screws with a T6 Torx screwdriver, but note that these feet screws are 4mm in length.

## Step 6



- Unscrew the marked 2mm screws with a Phillips #01 screwdriver.
- Remove the fan by disconnecting the marked tabs.

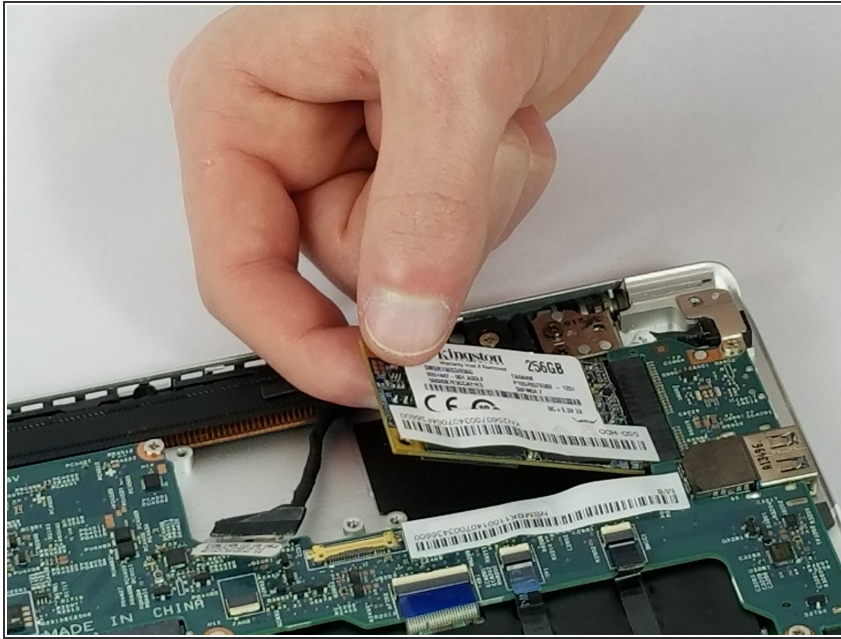
## Step 7 — Solid State Drive



- Remove the marked 2mm screw with a Phillips #01 screwdriver.

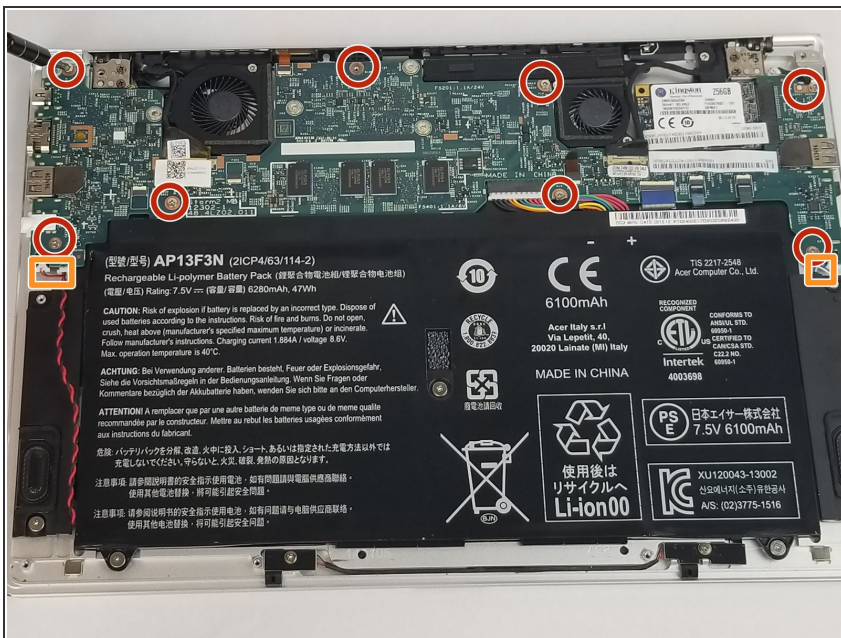


## Step 8



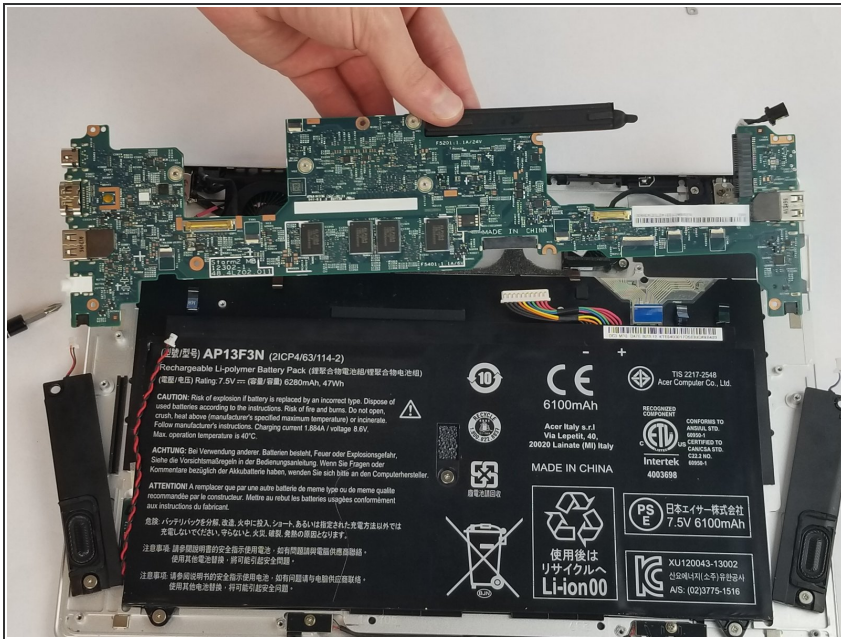
- ⚠ Remove the hard drive by pulling it away horizontally from its connection.

## Step 9 — Motherboard



- Remove all marked 2mm screws using a Phillips #1 screwdriver.
- Disconnect the orange marked connectors.
- i The connectors will take a decent amount of force to disconnect. This will not damage your device, so use the necessary force to disconnect them.

## Step 10



- Lift up on the motherboard to pull it out of the casing.

To reassemble your device, follow these instructions in reverse order.