



LG 305C Motherboard Replacement

This replacement guide will show how to replace the internal circuit board in the LG 305C.

Written By: Ashley Kidwell



INTRODUCTION

Before completing this replacement guide, it is important to unplug the device. This replacement guide will show how to replace the internal circuit board from the device.

TOOLS:

- [iFixit Opening Tools](#) (1)
 - [JIS #000 Screwdriver](#) (1)
-

Step 1 — Battery



- Pry open the back case on the device with a plastic opening tool and remove it.

Step 2



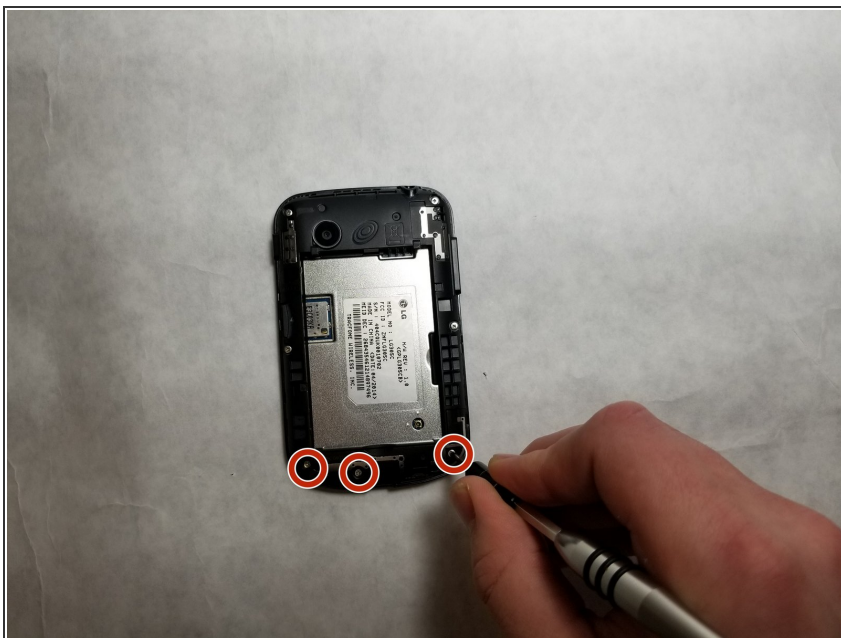
- Pry the battery out of the device with a plastic opening tool and remove it.

Step 3 — MicroSD card



- Dislodge the microSD card from the microSD card slot using your index finger and remove it.

Step 4 — Internal Casing



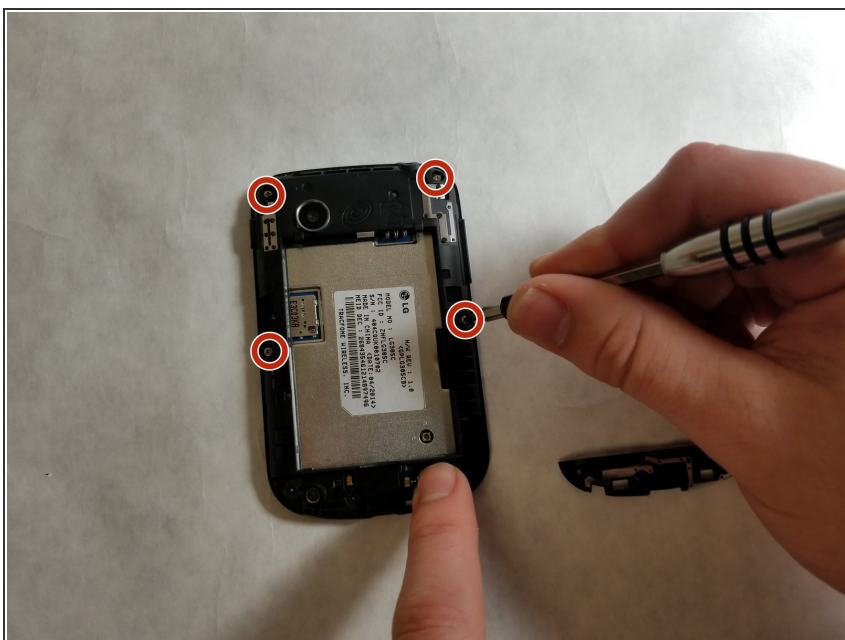
- Remove the three 4 mm screws using a JIS screwdriver with a J000 head from the bottom part of the internal casing.

Step 5



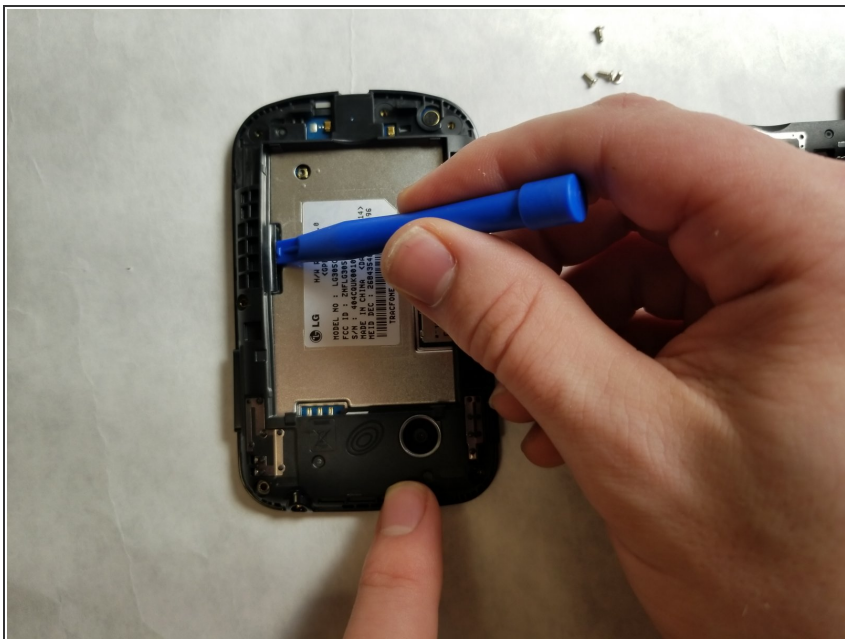
- Pry open the bottom part of the internal casing with the plastic opening tool and remove it.

Step 6



- Remove the four 4 mm screws using a JIS screwdriver with a J000 head from the top part of the internal casing.

Step 7



- Pry open the top part of the internal casing with the plastic opening tool and remove it.

Step 8 — Motherboard



- Pry the screen from the internal circuit board with a plastic opening tool and remove it.

To reassemble your device, follow these instructions in reverse order.