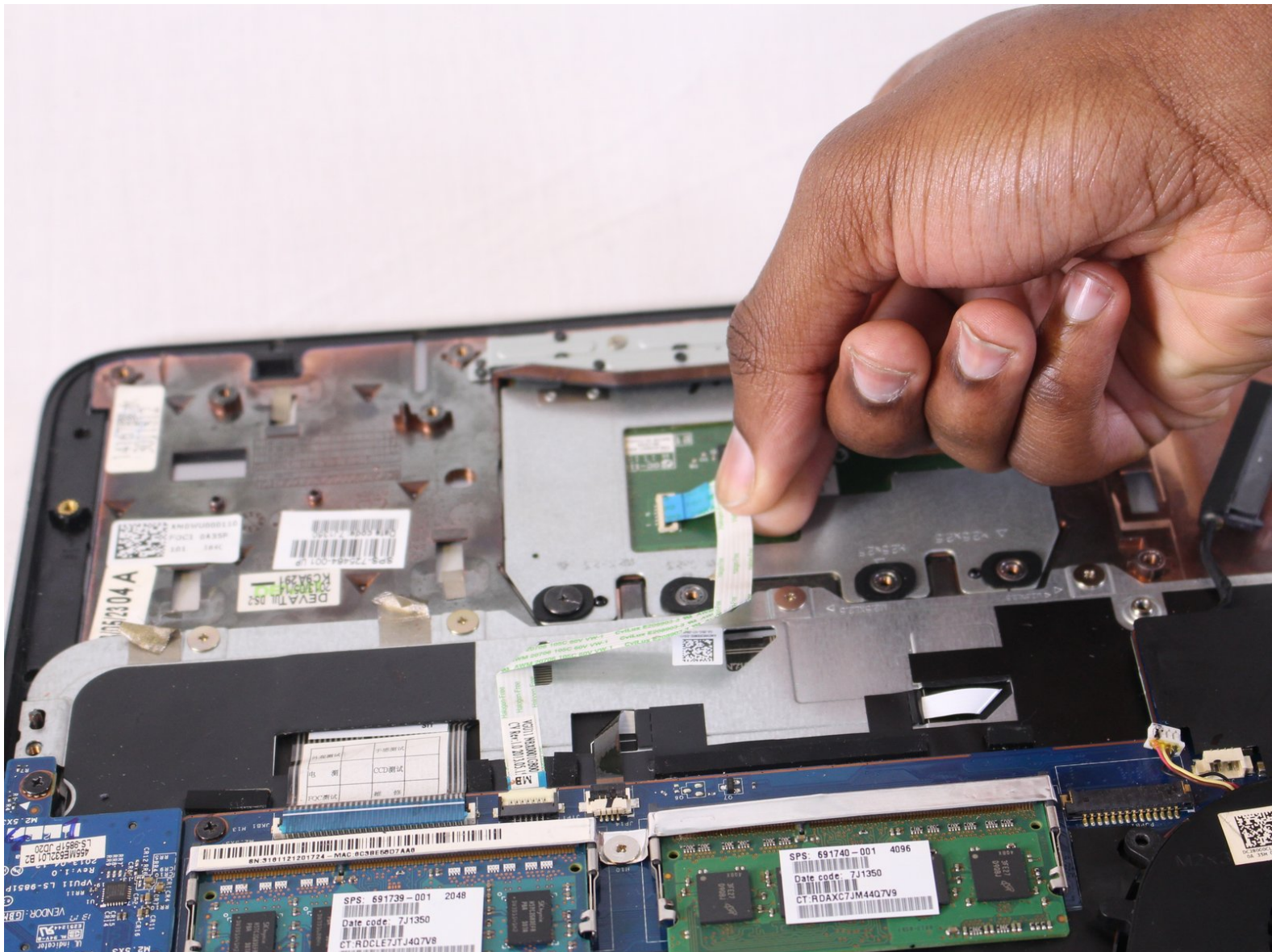




HP Envy Sleekbook m6-k010dx TouchPad Replacement

if your TouchPad of your HP Envy Sleekbook m6-k010dx TouchPad is not responding, this guide can help you to replace it properly.

Written By: codi whittaker



This document was generated on 2020-11-28 06:37:19 AM (MST).

INTRODUCTION

This guide will help you in replacing the touchpad on your HP Envy Sleekbook m6-k010dx. Make sure to turn the device off before doing anything.

TOOLS:

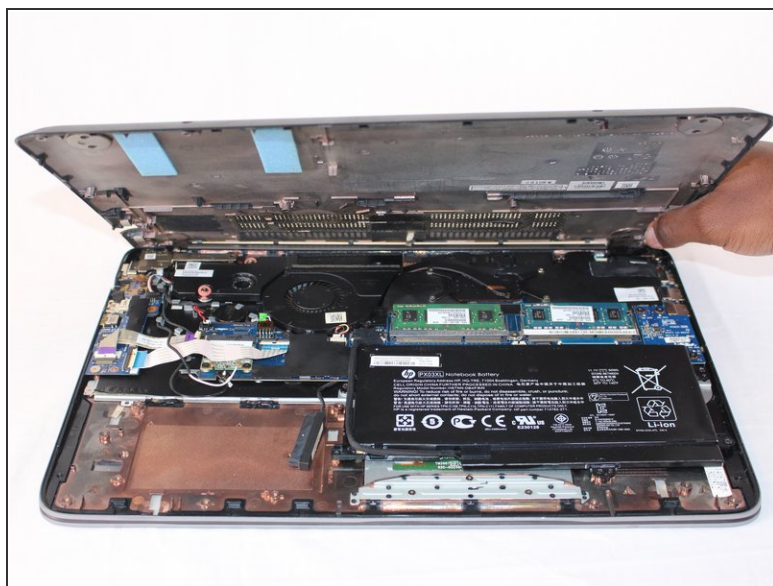
- [Phillips #00 Screwdriver](#) (1)
 - [iFixit Opening Tools](#) (1)
-

Step 1 — Battery



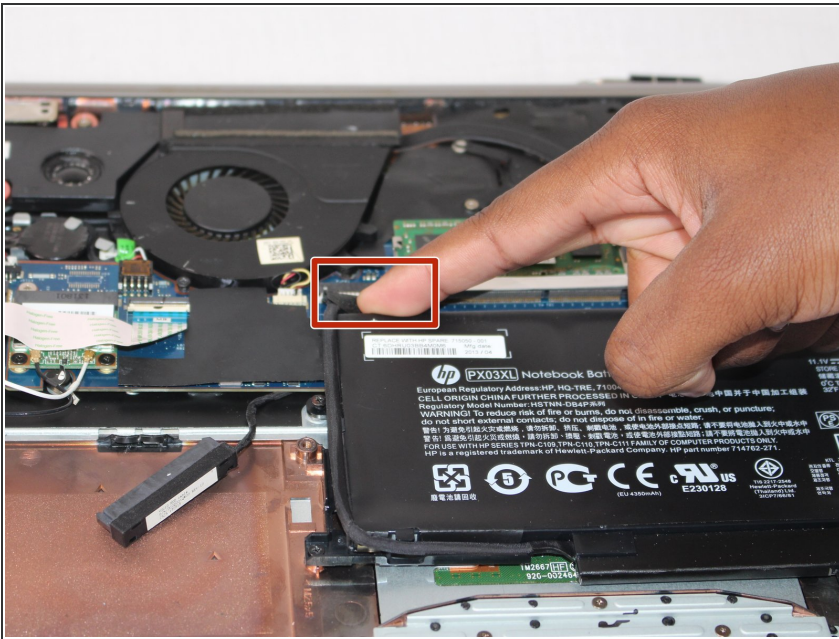
- Remove the twelve 9 mm Phillips #00 screws.

Step 2



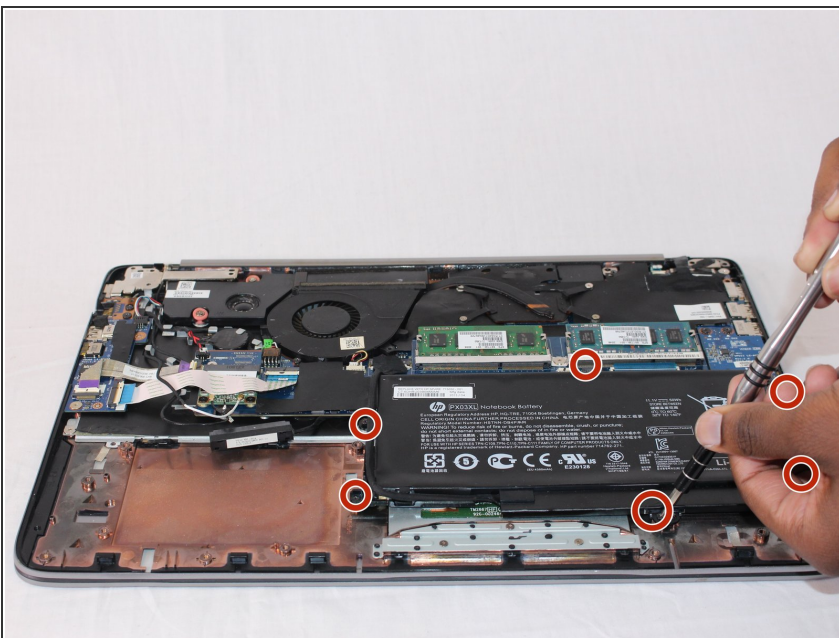
- Use the plastic opening tool and your hands to remove the bottom cover.

Step 3



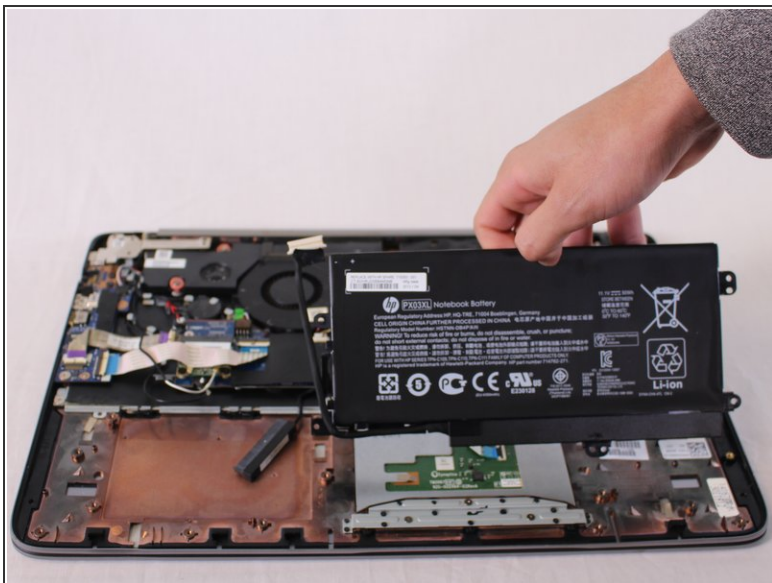
- Disconnect the battery power cable from the motherboard.

Step 4



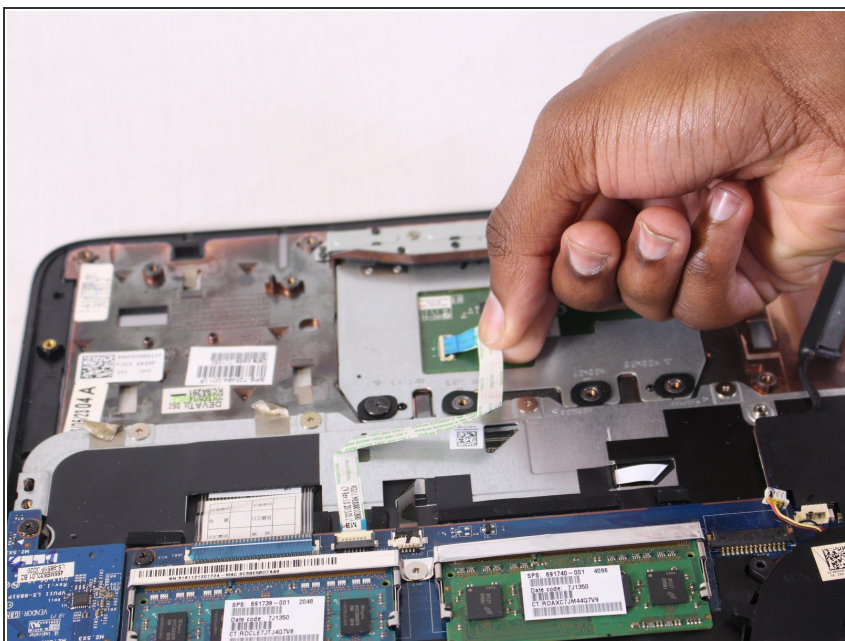
- Remove the six 6 mm Phillips #00 screws from the battery.

Step 5



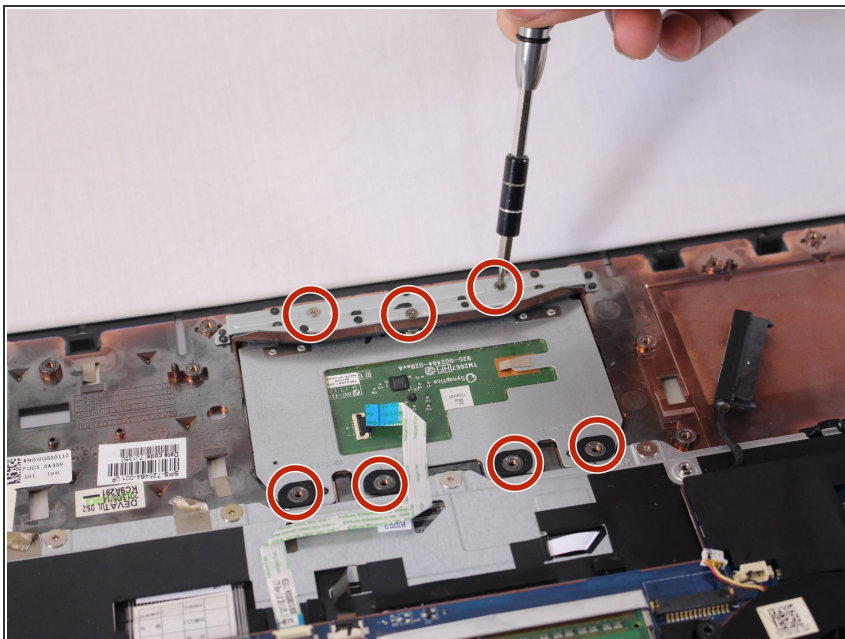
- Lift the battery out of the laptop.

Step 6 — TouchPad



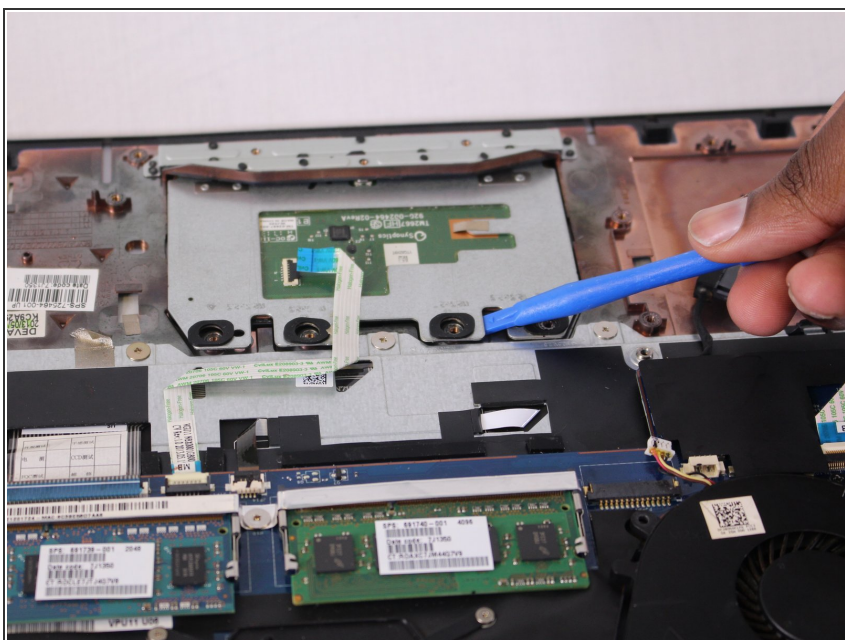
- Lift the white tab on the ZIF connector to unlock the ribbon cable.
- Pull the ribbon cable out of the ZIF connector.

Step 7



- Remove the seven 3mm Phillips #00 screws from the trackpad.

Step 8



- Use the plastic opening tool to lift the touchpad up and pull out to remove.

To reassemble your device, follow these instructions in reverse order.