



Motorola Moto E4 Plus Charging Port Replacement

This guide will show how to remove and replace the charging port of the Motorola Moto E4 Plus.

Written By: Jack Haseman



INTRODUCTION

For the official, updated iFixit guide, [click here](#). This guide is archived for historical purposes.

This guide will be helpful for when you are having problems with the battery life or charging capability of the phone.



TOOLS:

- [T4 Torx Screwdriver](#) (1)
- [Spudger](#) (1)



PARTS:

- [Moto E4 Plus Replacement Battery](#) (1)
- [Moto E4 Plus Battery Adhesive Strips](#) (1)
- [Motorola HE50 Battery](#) (1)
- [Moto E4 Charging Port](#) (1)

Step 1 — Back Plate and Battery



- Insert the spudger into the notch on the corner of the phone and lift up to remove the back case.

Step 2



- Use the T4 Torx Screwdriver to remove the 17 3.2 mm screws in the back panel covering the battery.

Step 3



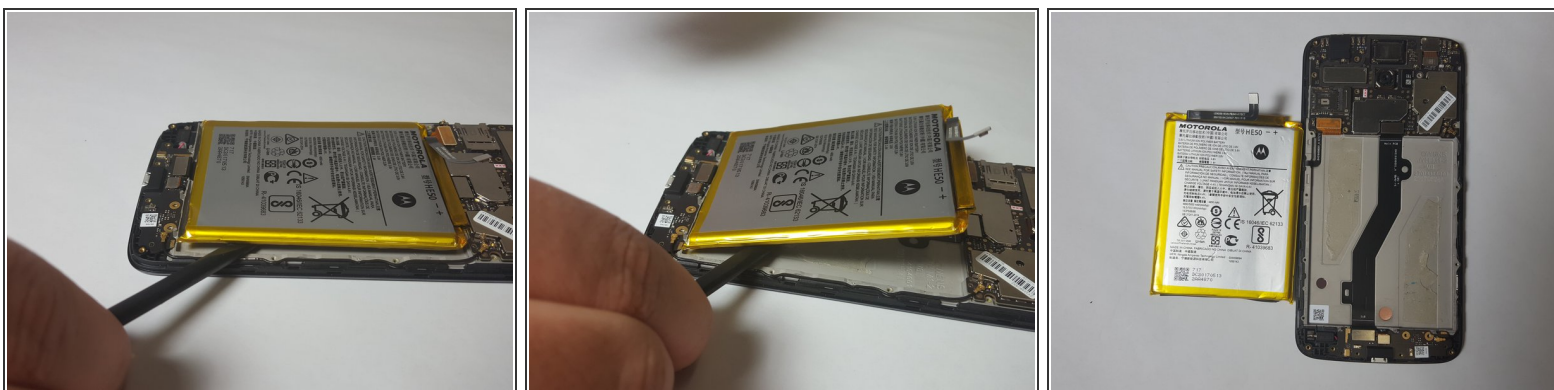
- Lift up and remove the back panel.

Step 4



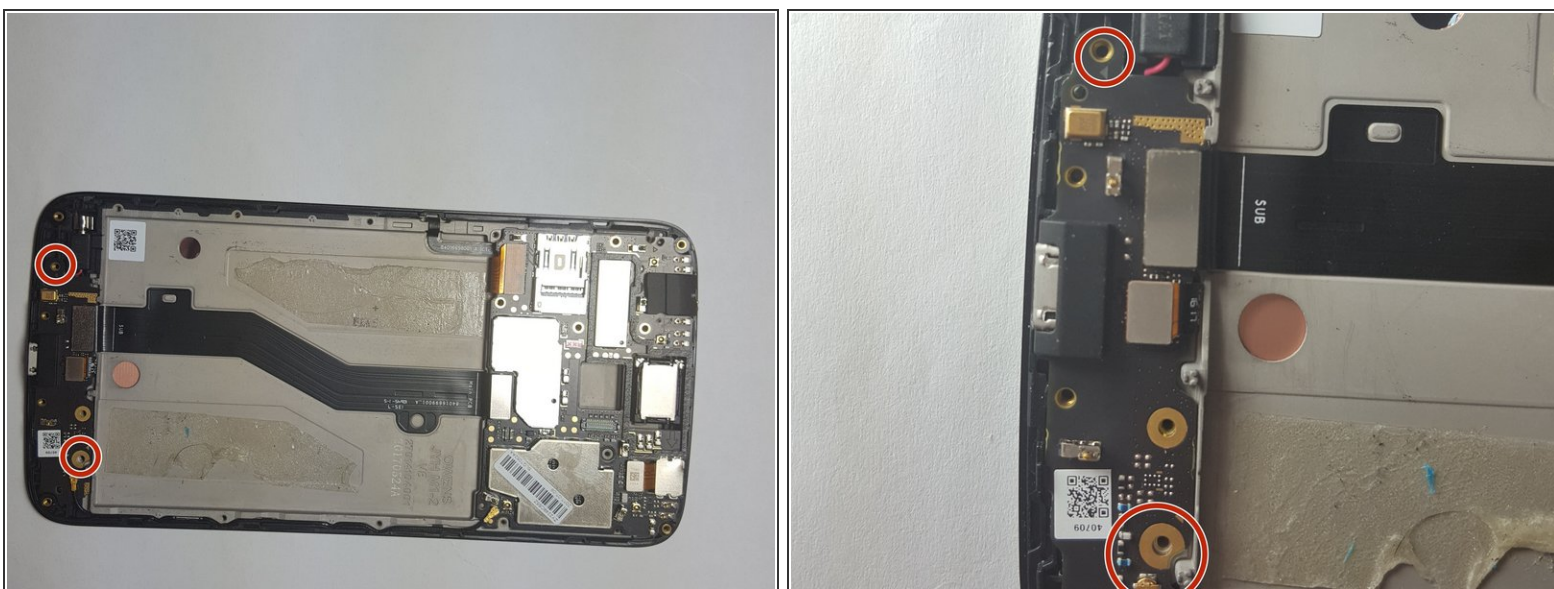
- After removing the back panel, use the spudger to lift and detach the Battery Flux Cable from the Motherboard.

Step 5



- Wedge the spudger between the battery and the phone to lift the battery up and remove the battery. There will be slight resistance to this but the battery will not be damaged by this. It is just the adhesive tape.

Step 6 — Charging Port



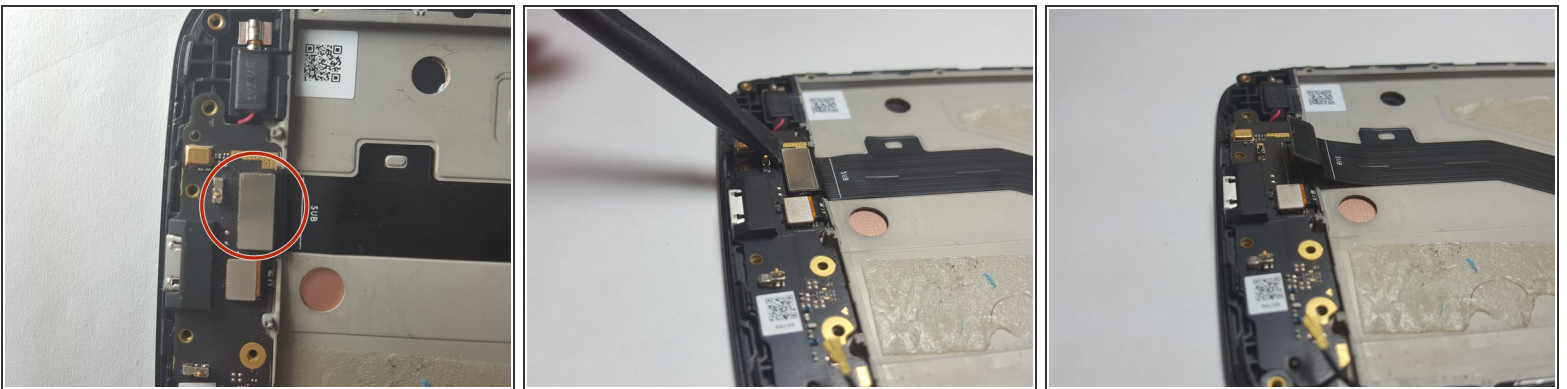
- Use the T4 Torx Screwdriver to remove the two 3.2 mm screws circled.

Step 7



- Use the Spudger to lift up and remove the Signal Flux Cable, circled in picture, from the Cable Port. The Signal Flux Cable should still be connected to the side of the phone, but detached from the charging port.

Step 8



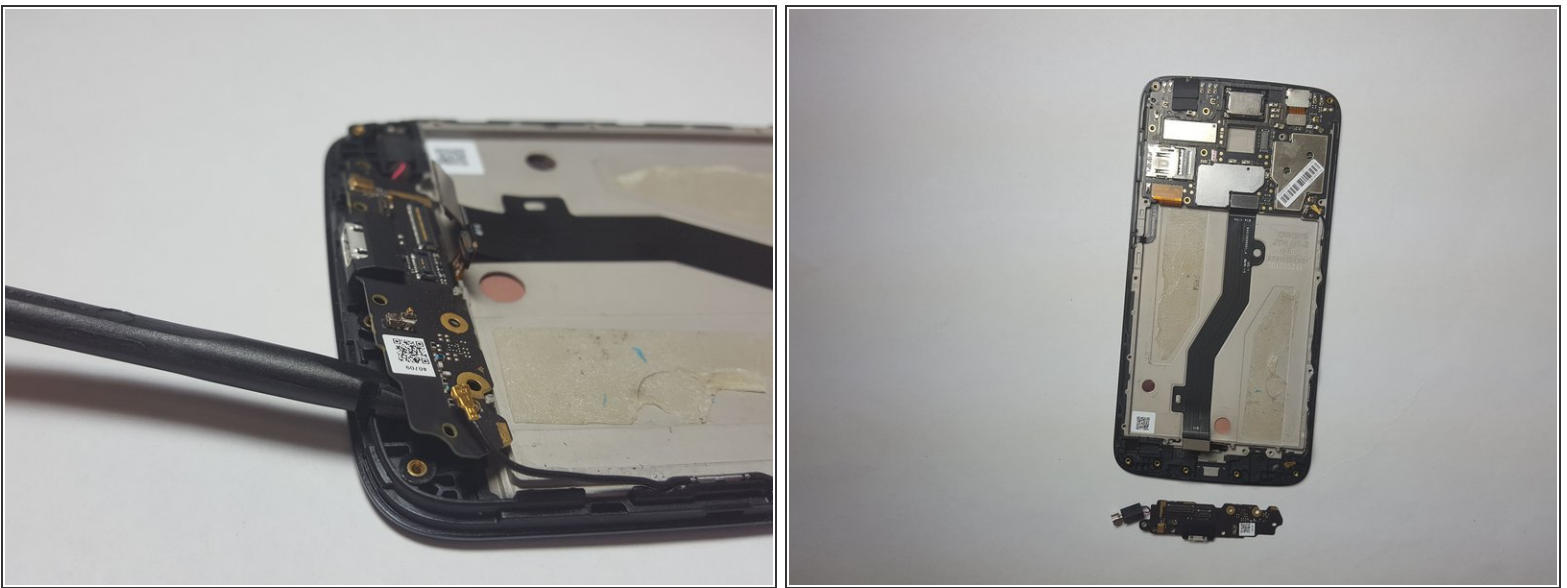
- Use the Spudger to lift up and detach the Main Flex Cable from the Cable Port.

Step 9



- Use the Spudger to lift up and detach the Fingerprint Scanner Flux Cable from the Cable Port.

Step 10



- Use the Spudger to lift up and remove the Charging Port from the phone. The black box connected to the charging port will lift up with it. Remove the whole piece.

To reassemble your device, follow these instructions in reverse order.