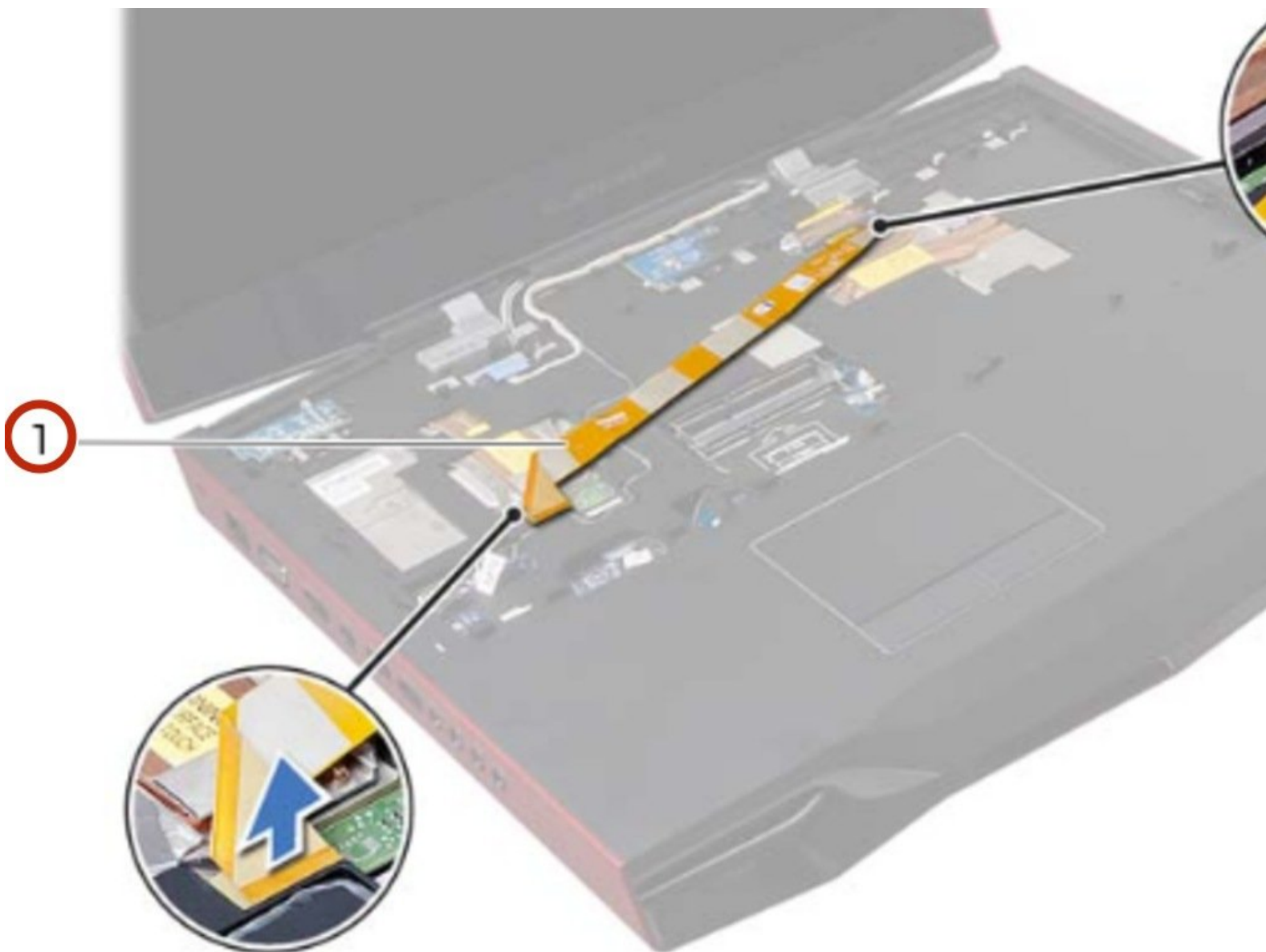




Dell Alienware M18x R2 Display Assembly Replacement

Written By: Terrence15



INTRODUCTION

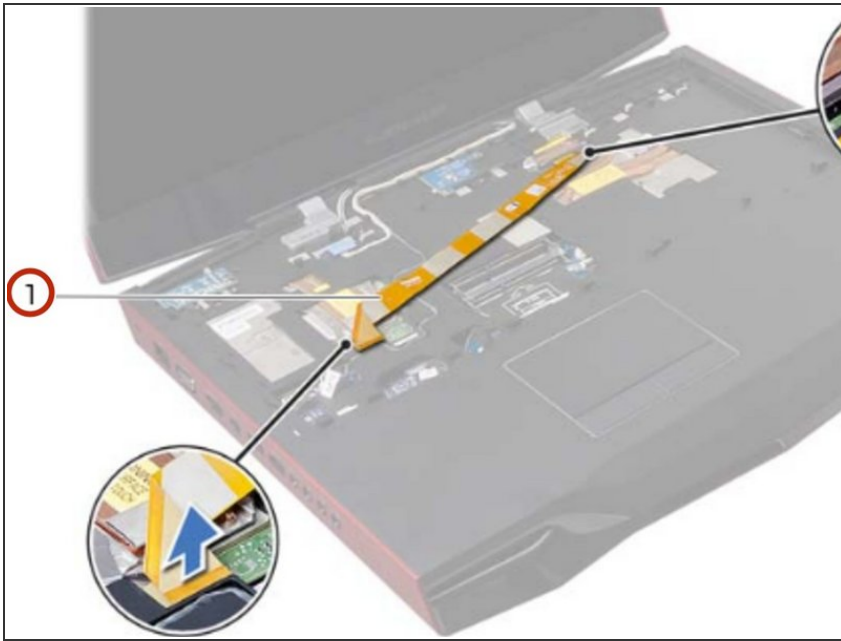
In this guide, we will show you how to remove and replace the Display Assembly.



TOOLS:

- [Phillips #0 Screwdriver](#) (1)
-

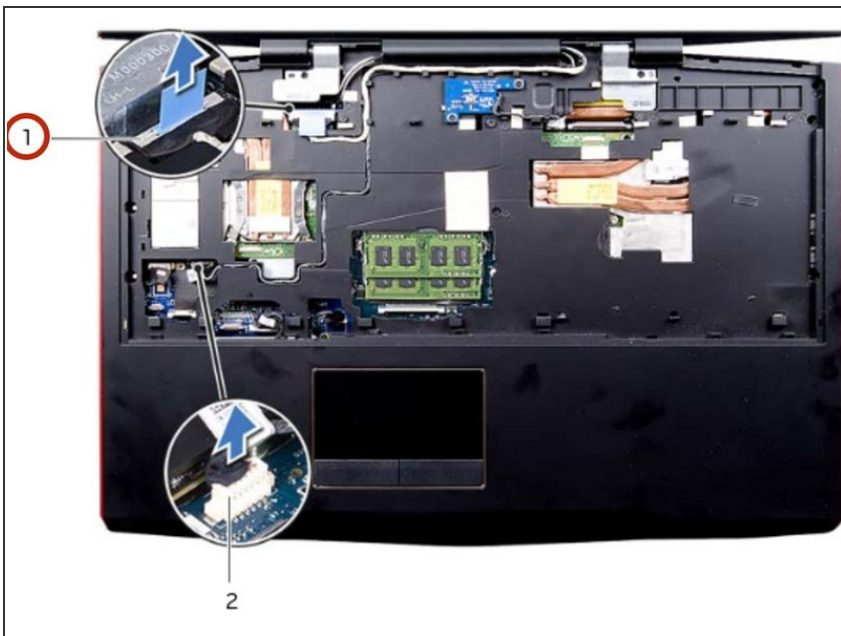
Step 1 — Disconnecting the Video-Card Connector Cable



⚠ WARNING: Before working inside your computer, read the safety information that shipped with your computer and follow the steps in [Before You Begin](#).

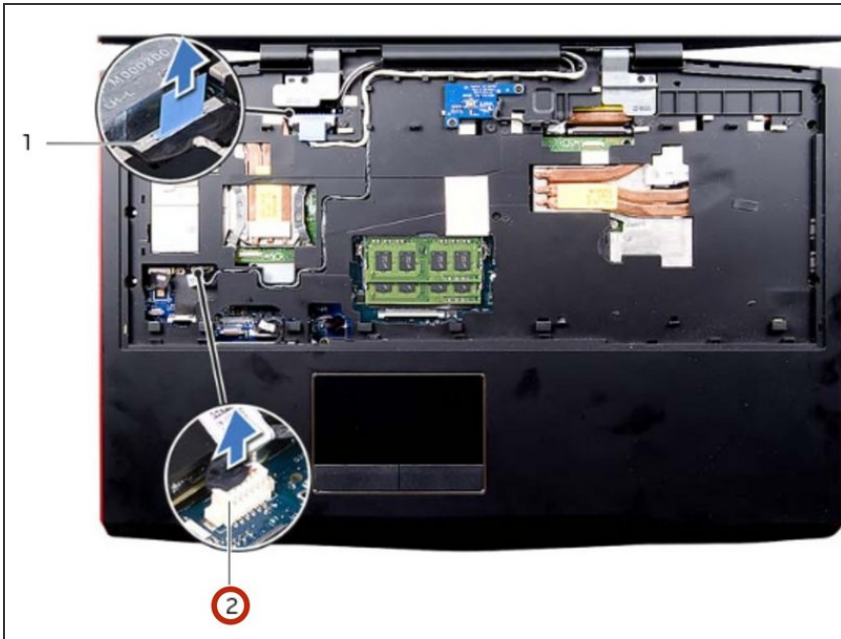
- Disconnect and peel off the video-card connector cable from the connectors on the system board.

Step 2 — Pull the Pull-Tab



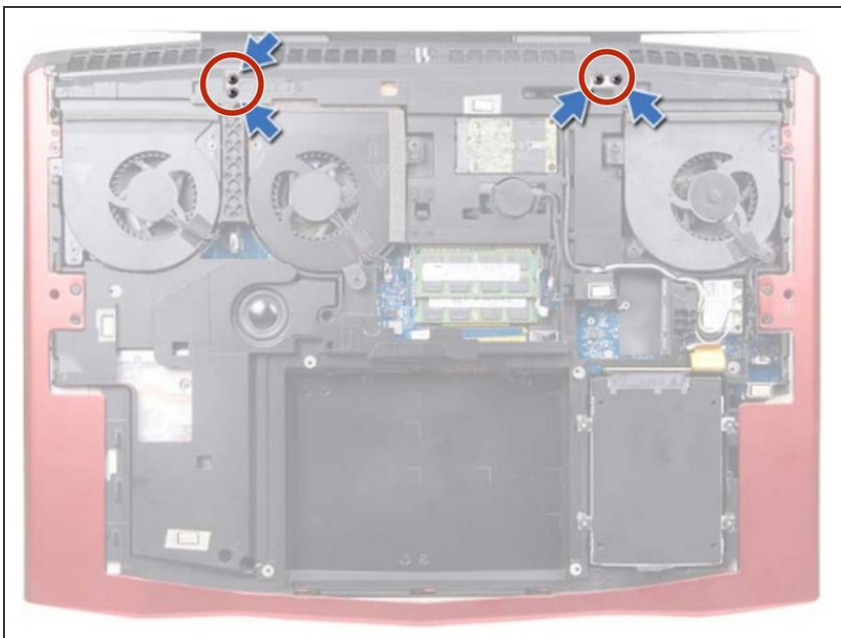
- Pull the pull-tab to disconnect the display cable from the connector on the system board.

Step 3 — Disconnecting the LED Logo Board Cable



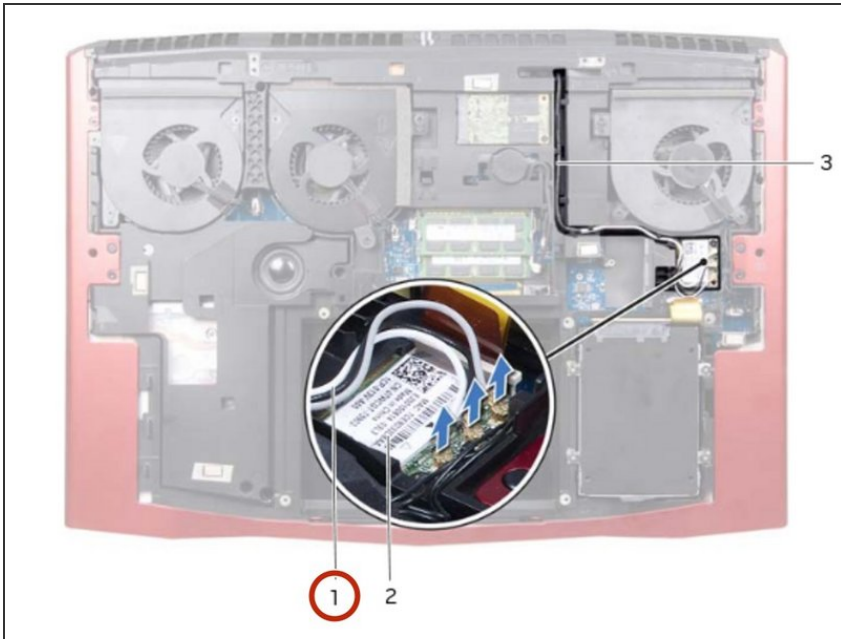
- Disconnect the LED-logo board cable from the connector on the system board.

Step 4 — Remove the Screws



- Close the display and turn the computer over.
- Remove the screws that secure the display assembly on the computer base.

Step 5 — Note the Routing



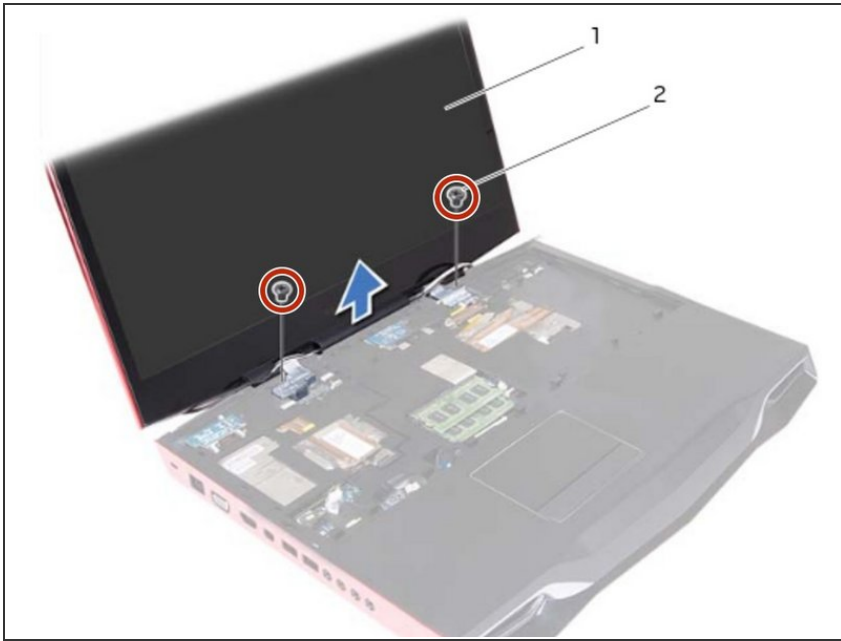
- Disconnect the antenna cables from the connectors on the Mini-Card.
- Note the routing of the antenna cables, and then remove the cables from the routing guides on the computer base.

Step 6 — Note the Routing



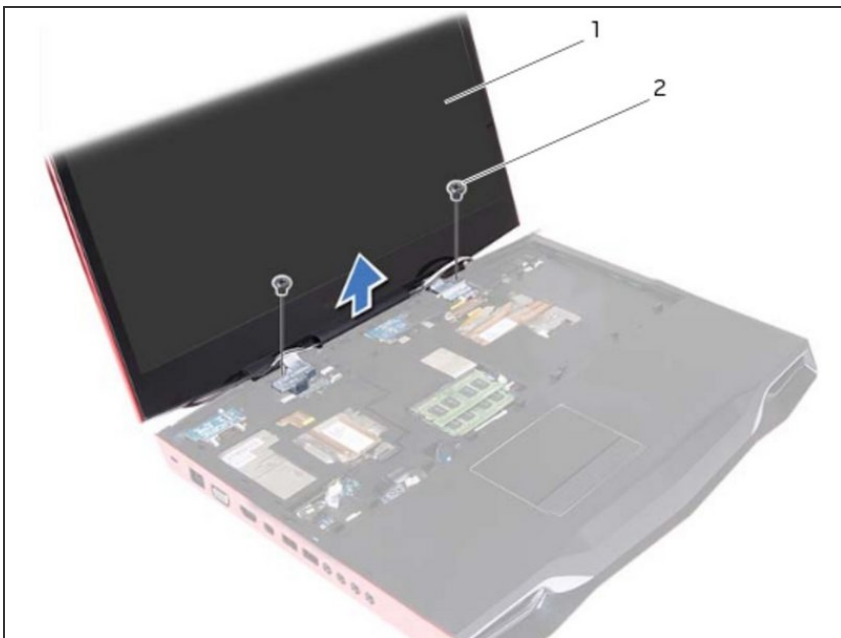
- Turn the computer over and open the display.
- Note the routing of the display cable and LED-logo board cable, and then remove the cables from the routing guides on the palm-rest assembly.

Step 7 — Remove the Screws



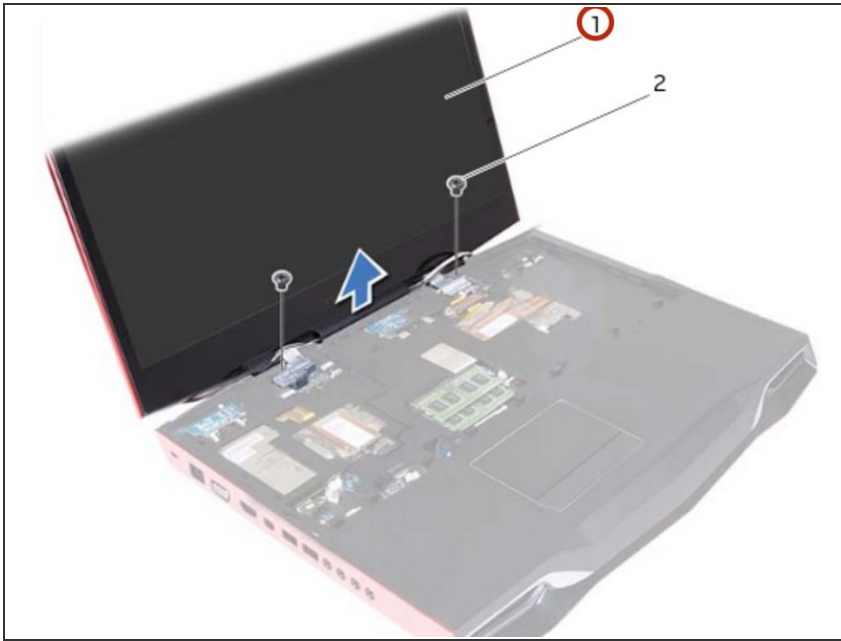
- Remove the screws, on the display hinges, that secure the display assembly to the computer base.

Step 8 — Sliding the Antenna Cables



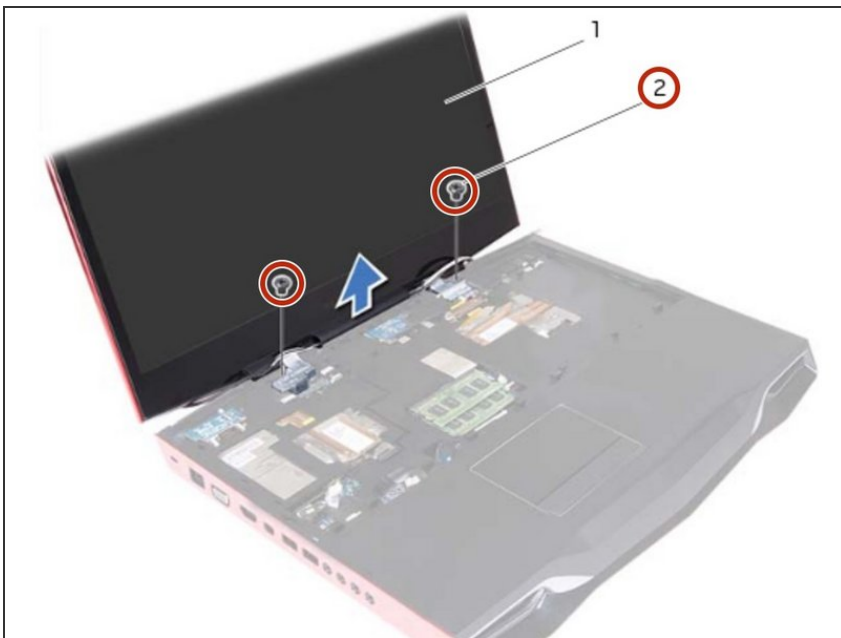
- Gently slide out the antenna cables through the slot on the computer base.

Step 9 — Moving the Display



- Move the display to a perpendicular position to the computer base, and then lift the display assembly off the computer.

Step 10 — Replace the Screws



- Place the **NEW** display assembly in position and replace the screws, on the display hinges, that secure the

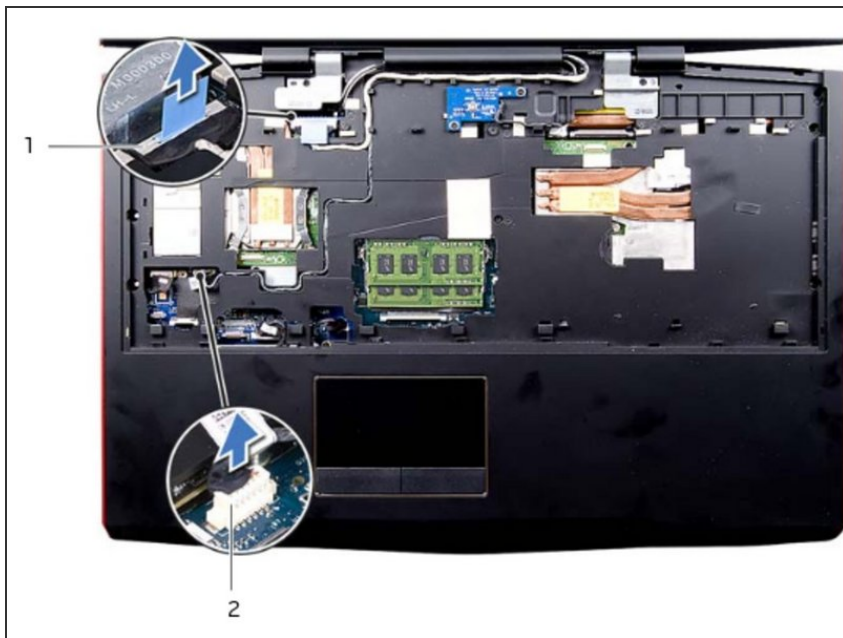
display assembly to the computer base.

Step 11 — Routing the Display Cable



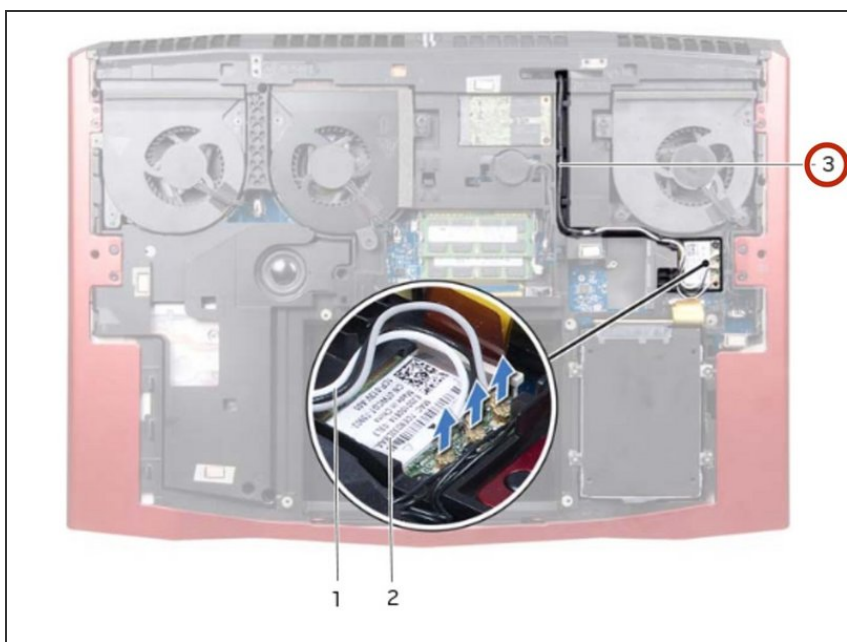
- Route the display cable and LED-logo board cable through the routing guides on the palm-rest assembly.

Step 12 — Connecting the Display Cable



- Connect the display cable, video-card connector cable, and LED-logo board cable to the respective connectors on the system board.

Step 13 — Sliding the Cables



- Slide the Mini-Card antenna cables through the slot on the computer base.

Step 14 — Routing the Mini-Card Antenna Cables



- Close the display and turn the computer over.
- Route the Mini-Card antenna cables through the routing guides on the computer base.

To reassemble your device, follow these instructions in reverse order.