



# Cuisinart DCC-1100 Selection Knob Replacement

This guide will show how to replace the knob on a Cuisinart DCC-1100 coffee maker.

Written By: Josh Harvey



---

## INTRODUCTION

This guide will help you replace the selection knob of the Cuisinart DCC-1100. Please have a replacement knob ready and unplug the machine before beginning work.

---



### TOOLS:

- [Phillips #0 Screwdriver](#) (1)
  - [Phillips #1 Screwdriver](#) (1)
-

## Step 1 — Selection Knob



- Remove the coffee pot.

## Step 2



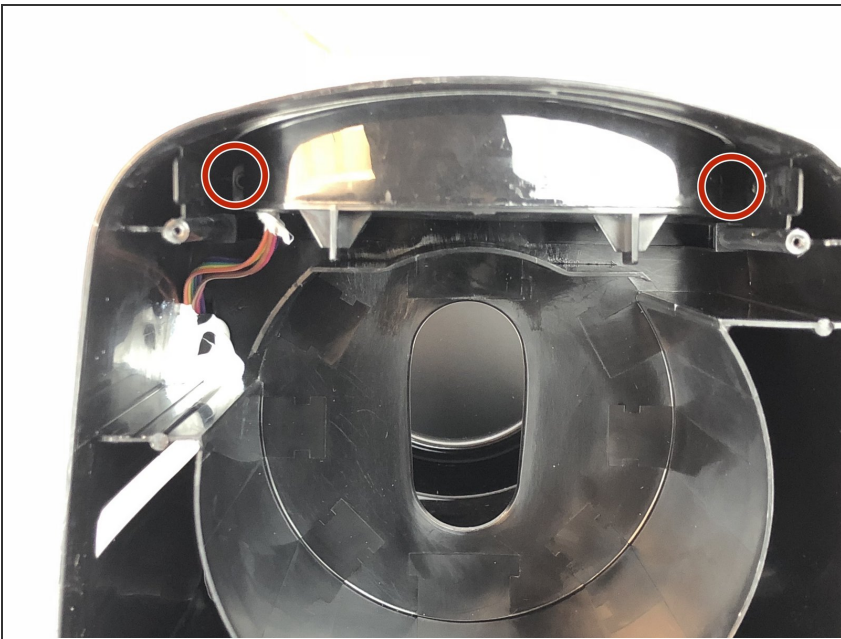
- Open the lid.
- Remove the two 1.6mm Phillips #1 screws from the lid.

### Step 3



- Remove the lid from the coffee maker.

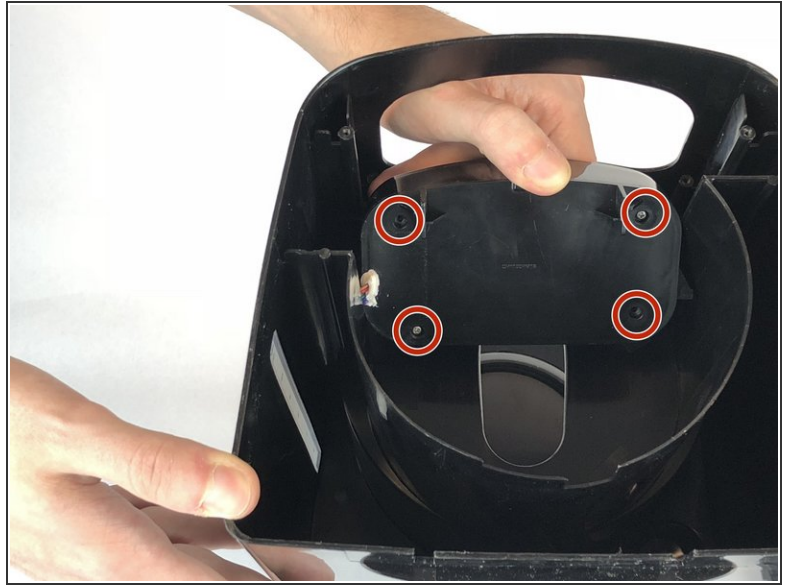
### Step 4



- Remove the two 1.3mm screws from the display.

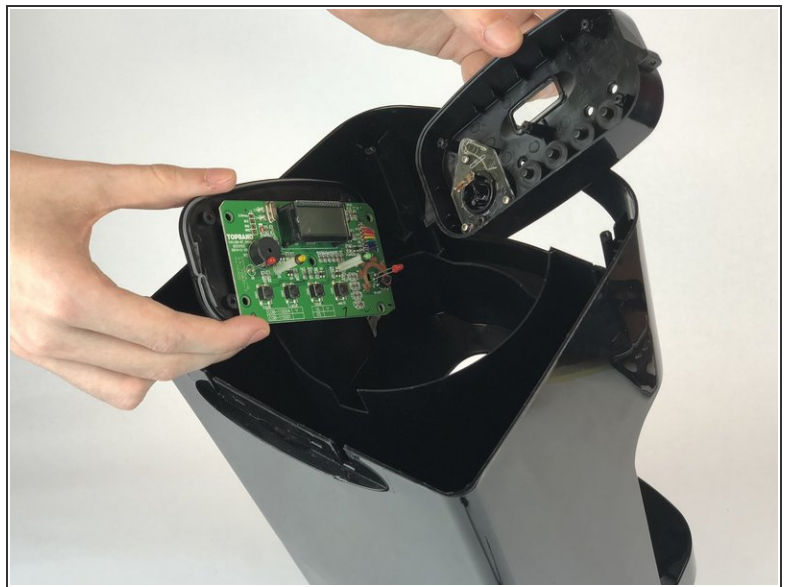


## Step 5



- Push the display into the maker so that way you can access the screws in the back.
- Remove the four 1mm Phillips #0 screws from the back.

## Step 6



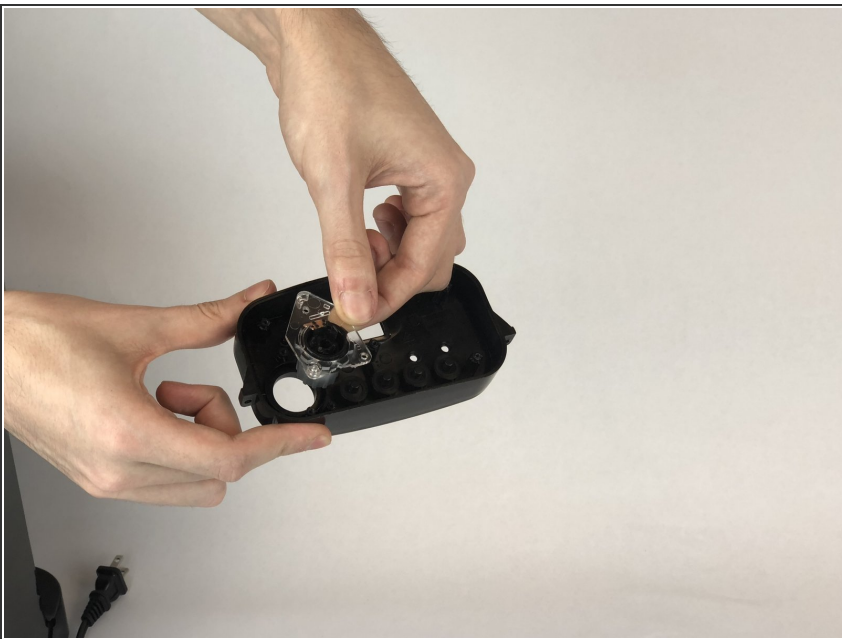
- Remove the back panel.
- Remove the front panel from the display.

## Step 7



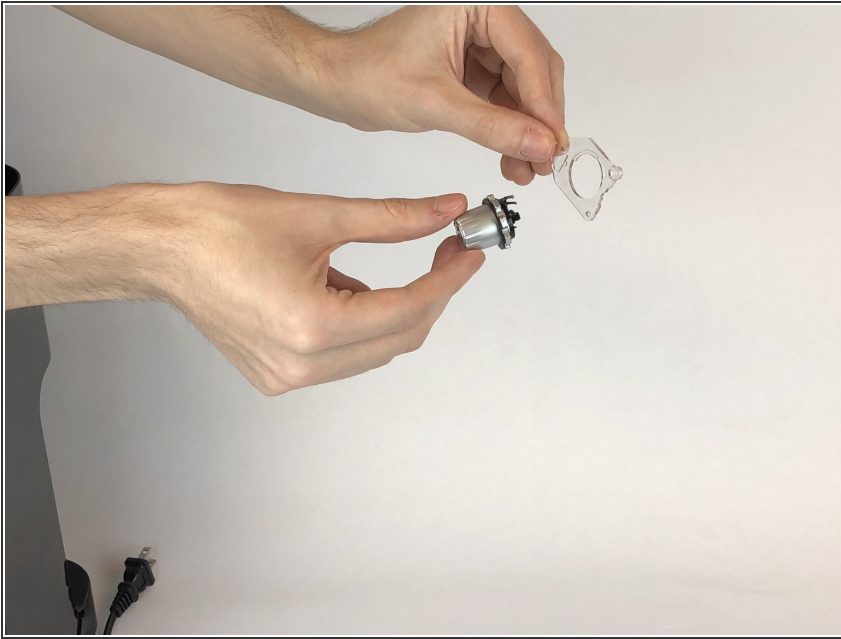
- Remove the three 1mm Phillips #0 screws from the knob.

## Step 8



- Remove the knob from the front panel.

## Step 9



- Remove the plastic ring from the knob.

To reassemble your device, follow these instructions in reverse order.