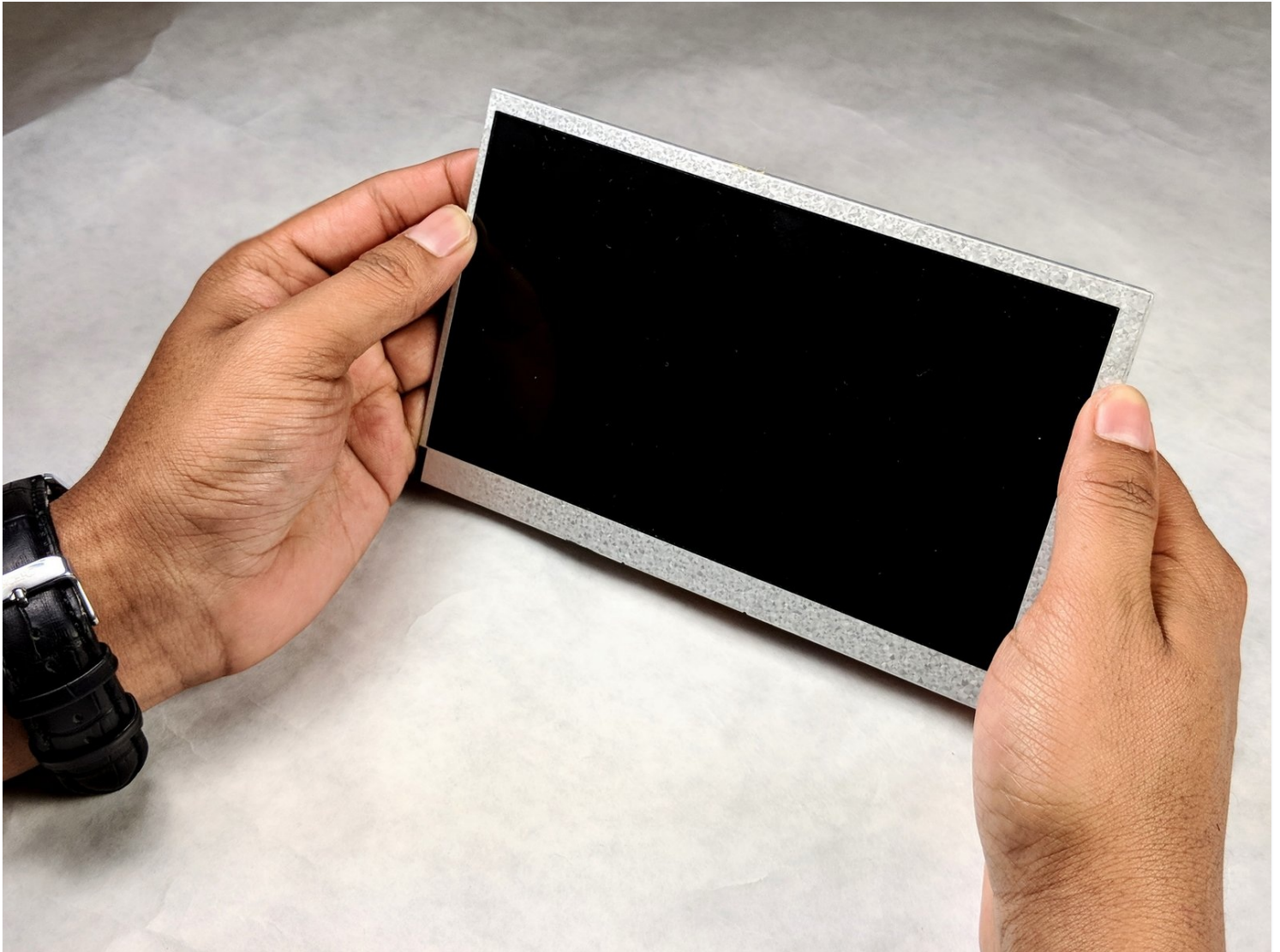




Pyle Astro PTBL7C LCD Replacement

The Pyle Astro's screen is comprised of three...

Written By: Andrew Redifer



INTRODUCTION

The Pyle Astro's screen is comprised of three layers, the external touch panel, the capacitive touch screen overlay, and the tablet's LCD. Use this guide to replace your tablet's LCD.

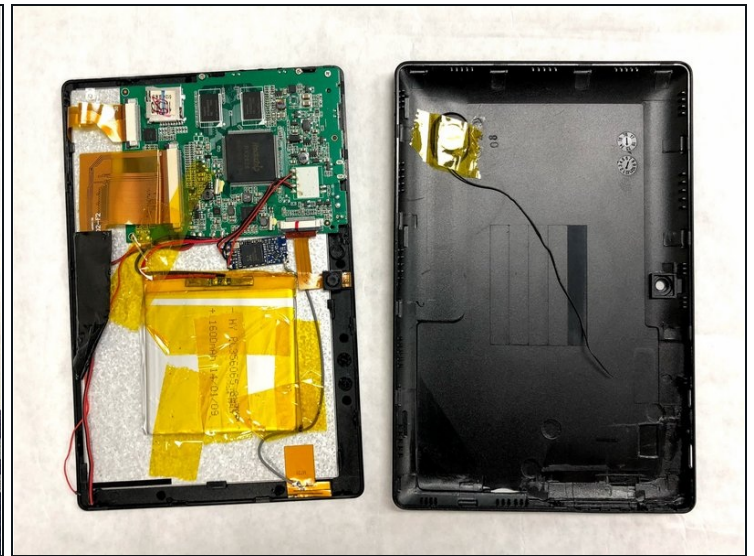
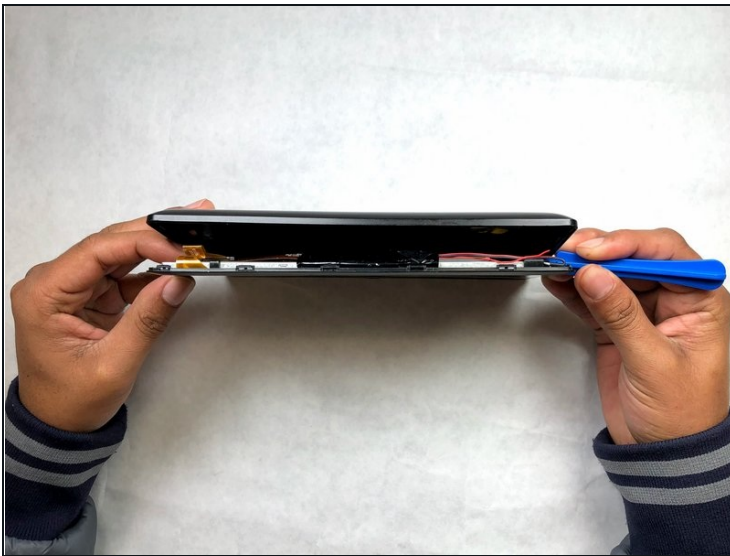
🔧 TOOLS:

[Soldering Iron](#) (1)
[Desoldering Braid](#) (1)
[iFixit Opening Tool](#) (1)
[JIS #0 Screwdriver](#) (1)
[Plastic Cards](#) (1)

⚙️ PARTS:

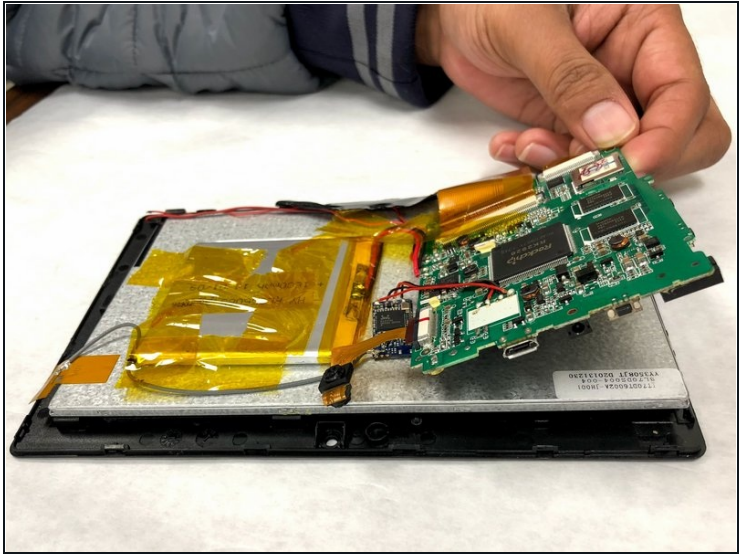
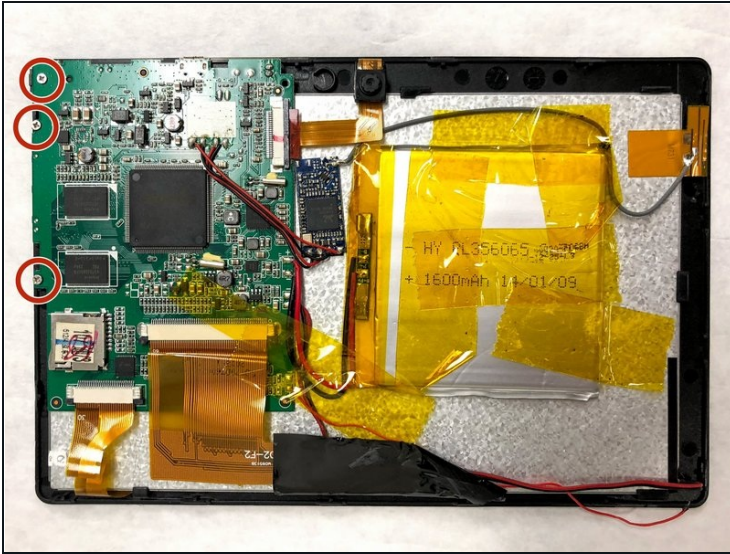
[LCD Screen](#) (1)

Step 1 — LCD



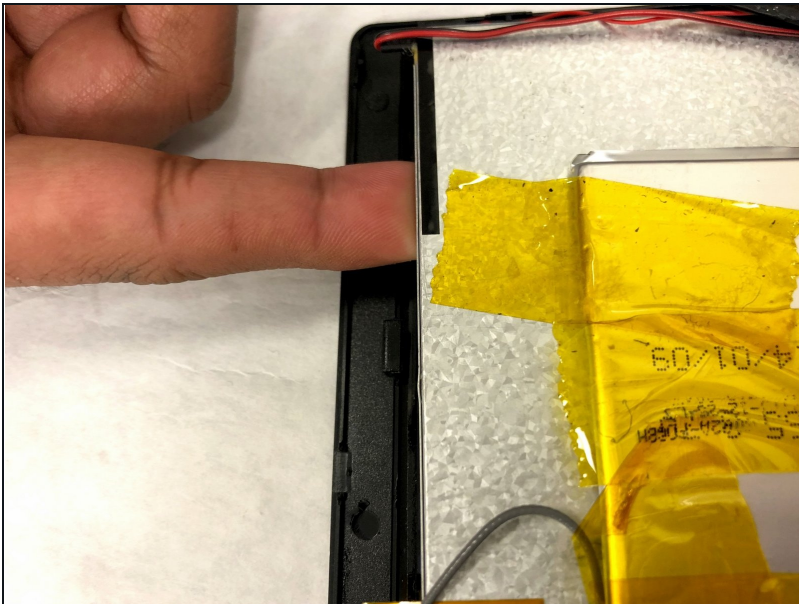
- Using the plastic opening tool, work your way along the edge of the tablet.
- ① The display is held in place by plastic tabs which slide into recesses in the rear plastic panel.
- Once all clips are released, gently open and separate the front display assembly and the rear plastic panel.
- Place the front display assembly facing front side down to expose the inside.

Step 2



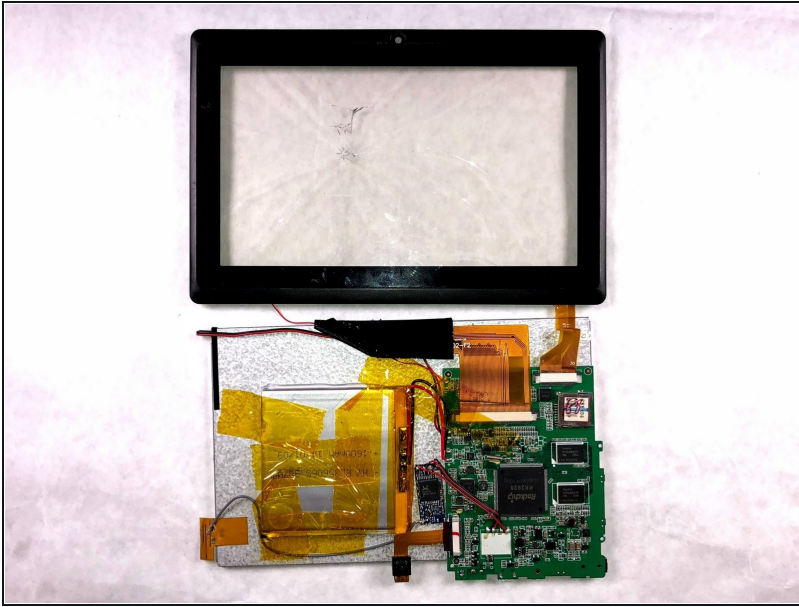
- Remove the three 4 mm JIS #0 screws to release the PCB board.

Step 3



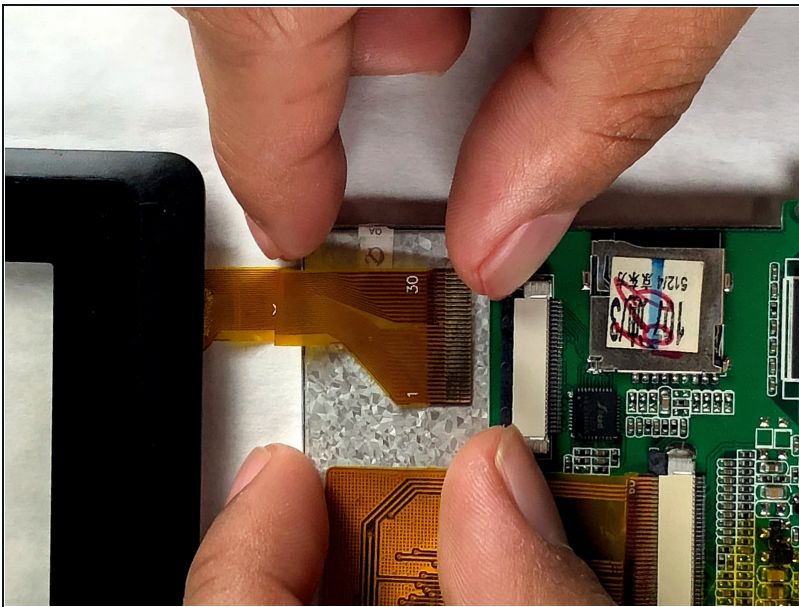
- ① The display is held in place by plastic tabs which slide over the outer edges of the backside of the display.
- Gently work your way around the display while pulling the plastic tabs back to release the LCD display from the front panel.

Step 4



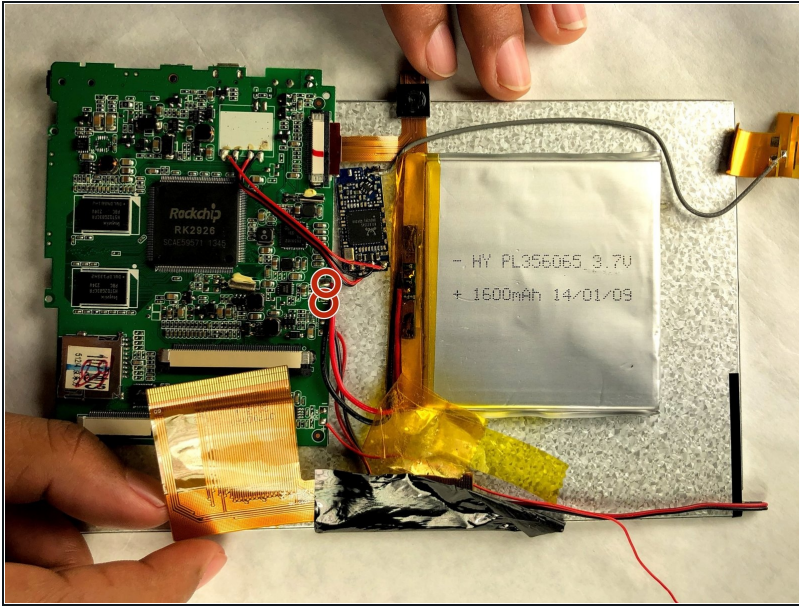
- Once all clips are released gently open and separate the front plastic display from the LCD and place the LCD face down.
- ① The front plastic display contains the external touch panel, and the capacitive touch screen overlay.

Step 5



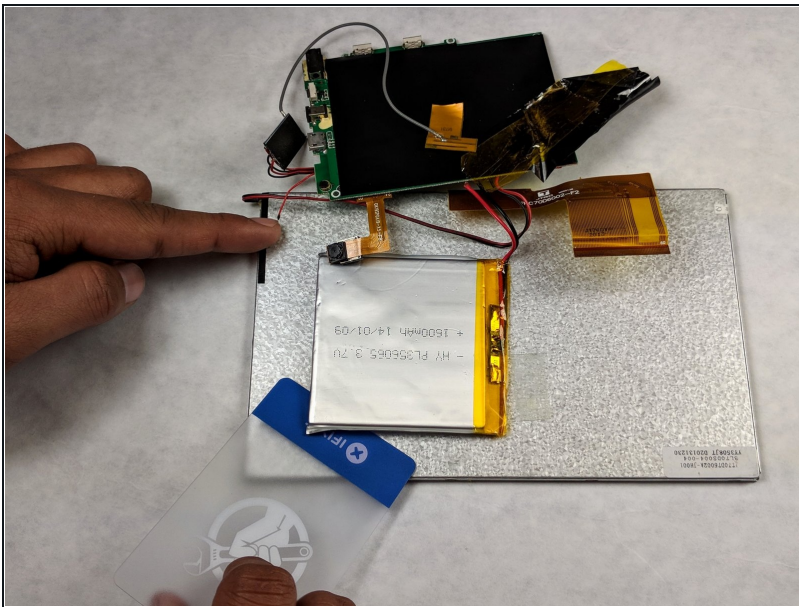
- Using both hands, gently release the ribbon cable to the capacitive touch screen overlay from the PCB board by pushing both gray tabs outwards.

Step 6



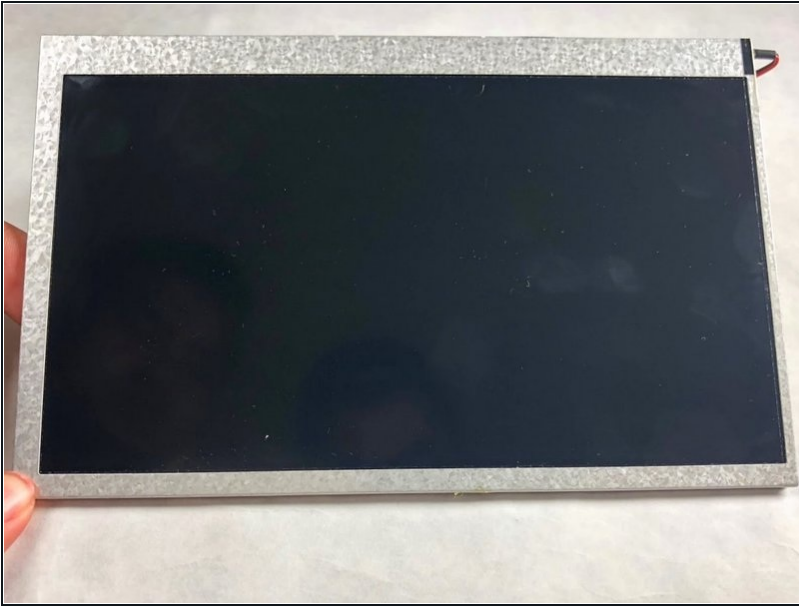
- De-solder the two wires (see two red arrows in image) that connect the PCB to the LCD panel.
- [How To Solder and Desolder Connections Guide](#)

Step 7



- Using a [plastic card](#), gently remove the adhesive that holds the battery in place and separate the battery from the LCD panel.
- ⚠ Exercise extreme caution and be sure to not rupture the battery casing.

Step 8



- Install the new LCD panel and solder all the connections back into place.
- [How To Solder and Desolder Connections Guide](#)

To reassemble your device, follow these instructions in reverse order.