



Archived

Motorola Moto E4 Plus Motherboard Replacement

For the official, updated iFixit guide, click...

Written By: Jack Haseman



INTRODUCTION

For the official, updated iFixit guide, [click here](#). This guide is archived for historical purposes.

This relatively moderate guide will walk you through with replacing the motherboard of your device. Sit tight as you'll be spending some time unscrewing a lot of screws and disconnecting connectors.



TOOLS:

[iFixit Opening Picks \(Set of 6\)](#) (1)
[Phillips #00 Screwdriver](#) (1)
[ESD Safe Blunt Nose Tweezers](#) (1)
[Precision Tweezers Set](#) (1)
[Spudger](#) (1)
[T4 Torx Screwdriver](#) (1)



PARTS:

[Moto E4 Plus Battery - Genuine](#) (1)
[Moto E4 Plus Battery Adhesive Strips - Genuine](#) (1)
[Moto E4 Back Camera](#) (1)
[Motorola HE50 Battery](#) (1)
[Moto E4 Motherboard](#) (1)

Step 1 — Back Plate and Battery



- Insert the spudger into the notch on the corner of the phone and lift up to remove the back case.

Step 2



- Use the T4 Torx Screwdriver to remove the 17 3.2 mm screws in the back panel covering the battery.

Step 3



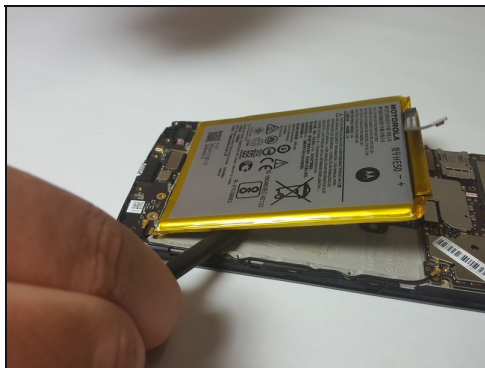
- Lift up and remove the back panel.

Step 4



- After removing the back panel, use the spudger to lift and detach the Battery Flux Cable from the Motherboard.

Step 5



- Wedge the spudger between the battery and the phone to lift the battery up and remove the battery. There will be slight resistance to this but the battery will not be damaged by this. It is just the adhesive tape.

Step 6 — Rear Camera



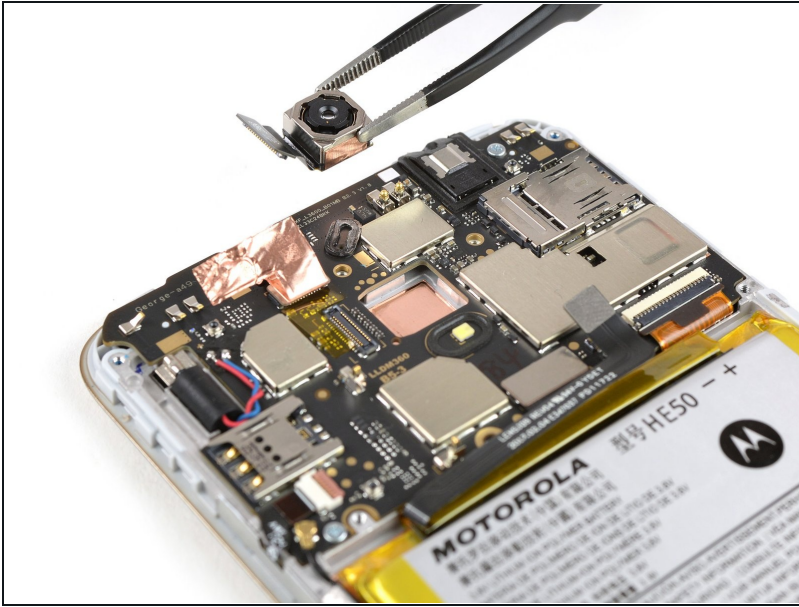
- Use a pair of tweezers to peel up the copper tape that covers the rear camera flex connector.
- Fold the copper tape out of the way.

Step 7



- Use the flat end of a spudger to pry up and disconnect the rear camera flex cable.

Step 8



- Carefully remove the rear camera with a pair of tweezers.

Step 9 — Motherboard



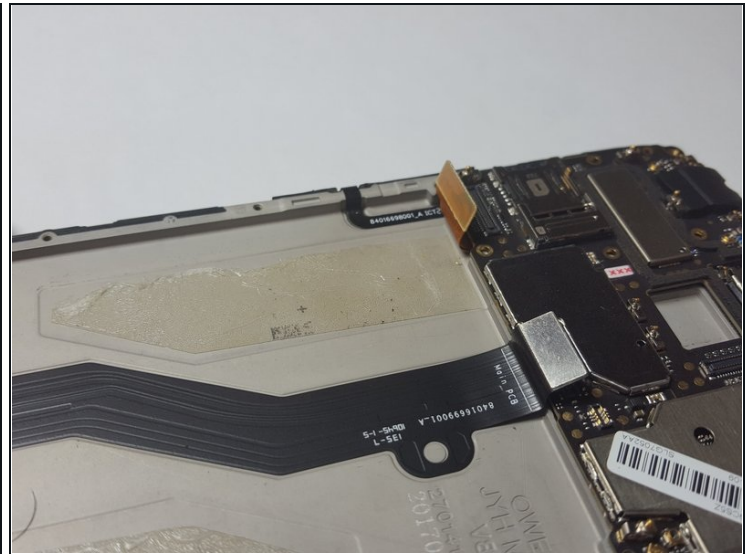
- Use the T4 Torx Screwdriver to remove the 2 3.2 mm screws circled in the image.

Step 10



- Use the Spudger to lift up and detach the Main Flex Cable from the Motherboard.

Step 11



- Use the Spudger to lift up and detach the LCD Screen Flex Cable from the Motherboard.

Step 12



- Use the Plastic Spudger to lift up and detach the Signal Flex Cable from the Motherboard. The Signal Flex Cable should still be attached to the body of the phone.

Step 13



- Use the Spudger to lift up and remove the Motherboard from the phone.

To reassemble your device, follow these instructions in reverse order.