



D-Link DCS-2630L Wi-Fi Camera Back Casing Replacement

This guide will walk through removing the back casing to expose the inner circuitry.

Written By: Collyn Dodge





TOOLS:

- [Phillips #00 Screwdriver](#) (1)
-

Step 1 — Back casing



- Remove the two 9.65 mm screws on the back cover using the Philips head PH00 screw driver.

Step 2



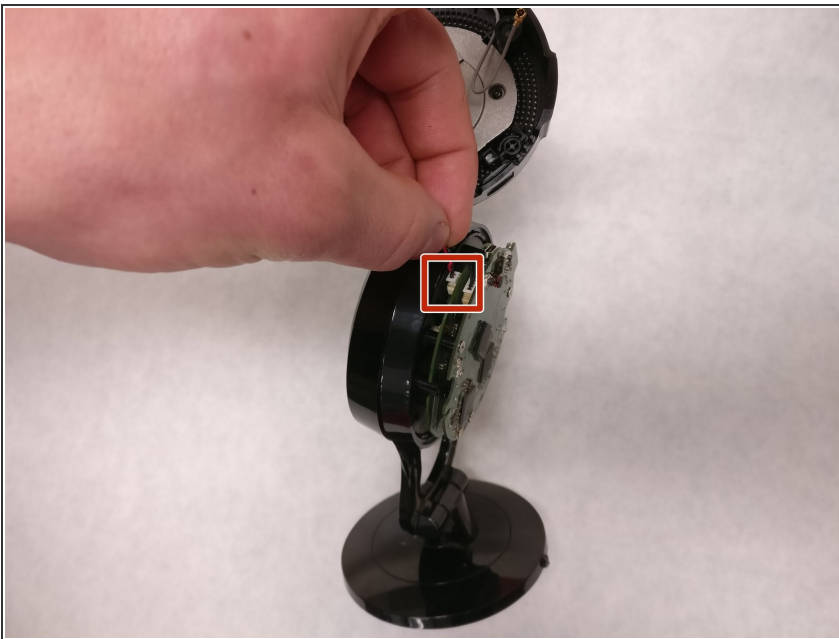
- Remove the back casing to expose the circuit board.

Step 3



- Detach the gray antenna wires by gently pulling on the side closest to the circuit board.

Step 4



- Detach the speaker wire by gently pulling on the side closest to the body of the camera.

To reassemble your device, follow these instructions in reverse order.