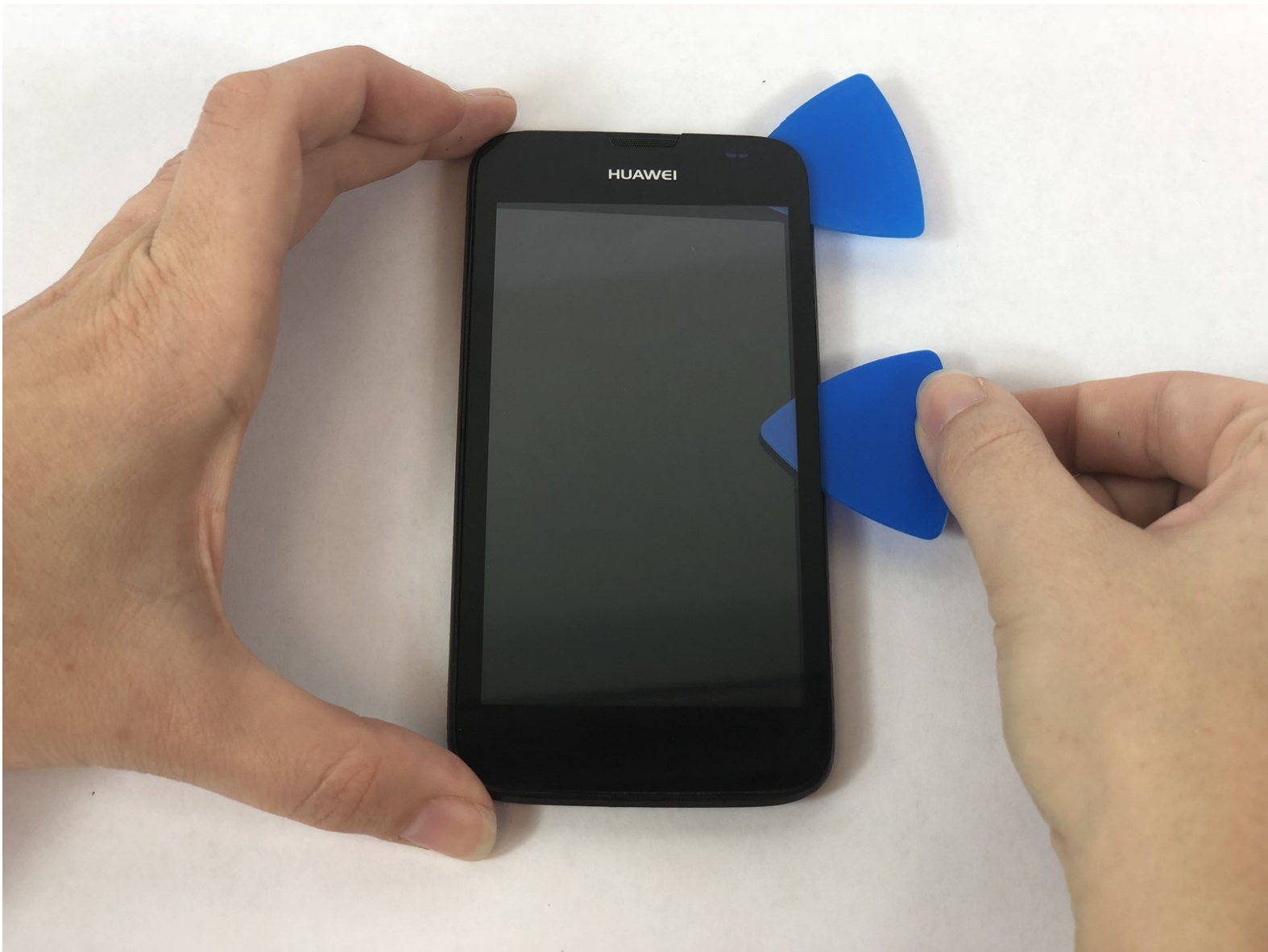




Huawei Union Screen Replacement

This guide will show you how to replace the Screen for the Huawei Union in a few short and simple steps.

Written By: Brittany Achor



INTRODUCTION

Use this guide if your Huawei Union will not power on when the power button is pressed and you need to replace the screen.



TOOLS:

- [Spudger](#) (1)
 - [Phillips #00 Screwdriver](#) (1)
 - [Magnetic Project Mat](#) (1)
 - [iFixit Opening Picks set of 6](#) (1)
 - [iOpener](#) (1)
-

Step 1 — Battery



- Wedge your thumb nail, or the flat end of a spudger, into the bottom left corner and pry off.

Step 2



- Use the flat end of a spudger, or fingernail, to lift up the battery and pull out.

Step 3 — Camera Lens Panel



- Remove the thirteen 3mm Phillips #00 screws from the back panel.

Step 4



- Use the flat end of a spudger to pry off the back panel.

Step 5 — Motherboard



- Remove a single 3mm Phillips #00 screw from the motherboard.

Step 6



- Using the flat end of a spudger to disconnect the motherboard ribbon cable.

Step 7



- Firmly hold the second ribbon cable's plastic film cover and pull up to disconnect.

Step 8



- Wedge the flat end of a spudger underneath the motherboard and pry upwards to separate it from the frame.

Step 9 — Screen



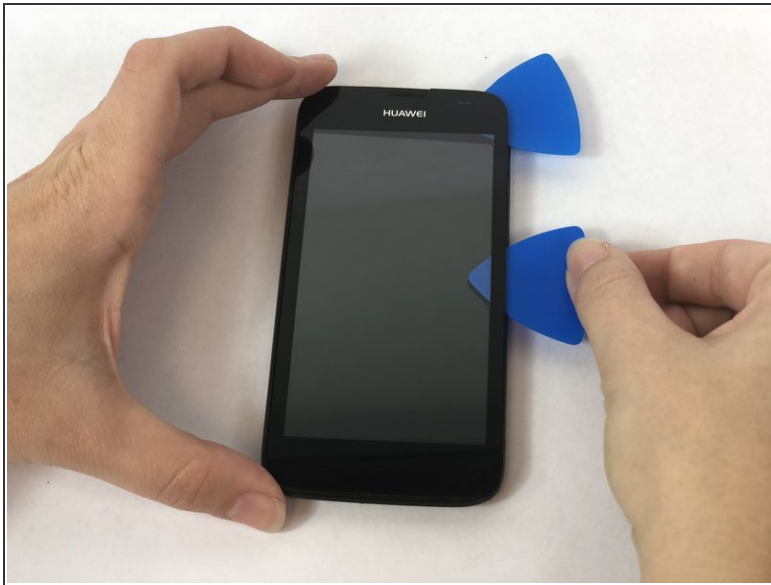
- Using an iOpener heat source tool, warm the screen of the phone to loosen adhesive of the screen.

Step 10



- Wedge an opening pick underneath the screen and slowly work your way around the screen.

Step 11



- Using multiple Opening Picks, work your way around the edges making sure not to place too much pressure at any one point.
- With each pass, move the Opening Pick further to complete separation.

Step 12

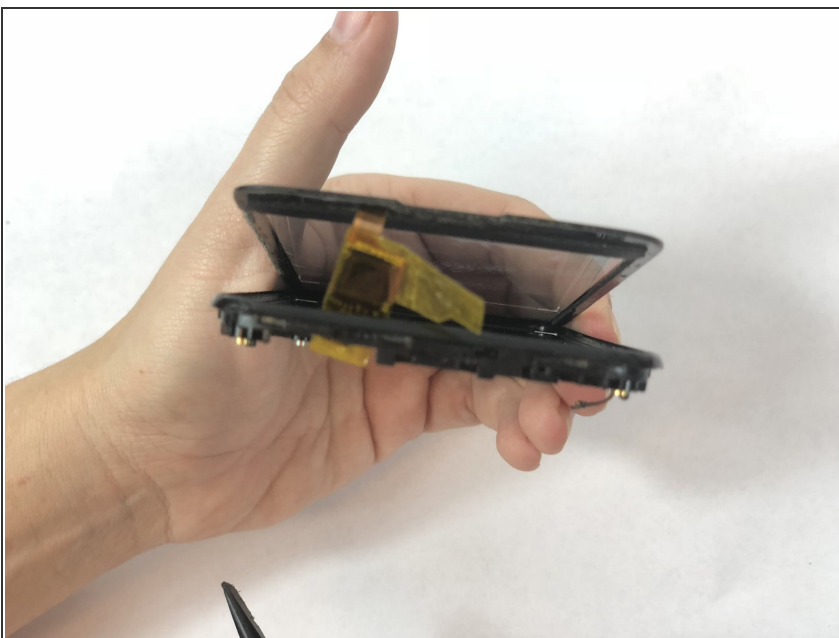


- Once screen is sufficiently separated, holding the sides of the frame firmly, use the Spudger to press through the small access window to the screen at the top let and completely separate the screen from the frame.

⚠ Do not push too firmly. Screen may break. If screen will not separate, use iOpener heating element again and start over.

⚠ Do not press too far when separating the screen. There is a small ribbon cable attached to the screen that must be gently drawn through small access window.

Step 13



- Pull screen away from frame making sure the ribbon cable stays attached.

To reassemble your device, follow these instructions in reverse order.