



LG Tribute HD Flex Cable Replacement

A guide showing how to remove and replace the flex cable in the LG Tribute HD LS676.

Written By: Dhruv Patel



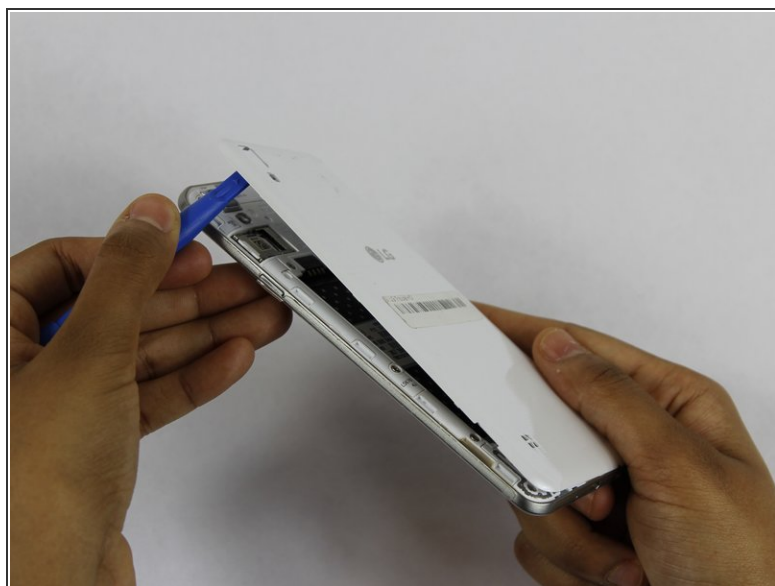
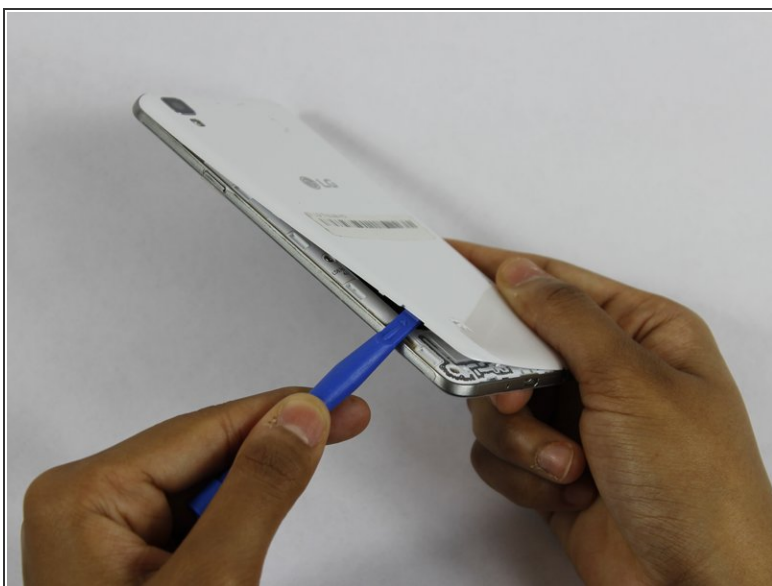
INTRODUCTION

In this guide we will teach you how to properly remove and replace the flex cable in the LG Tribute HD LS676. The flex cable or cable ribbon is a small delicate cable that is connected to the motherboard. It should be handled cautiously since it can be easily damaged by an applied force.

TOOLS:

- [iFixit Opening Tools](#) (1)
 - [JIS #00 Screwdriver](#) (1)
-

Step 1 — Battery and SD Card



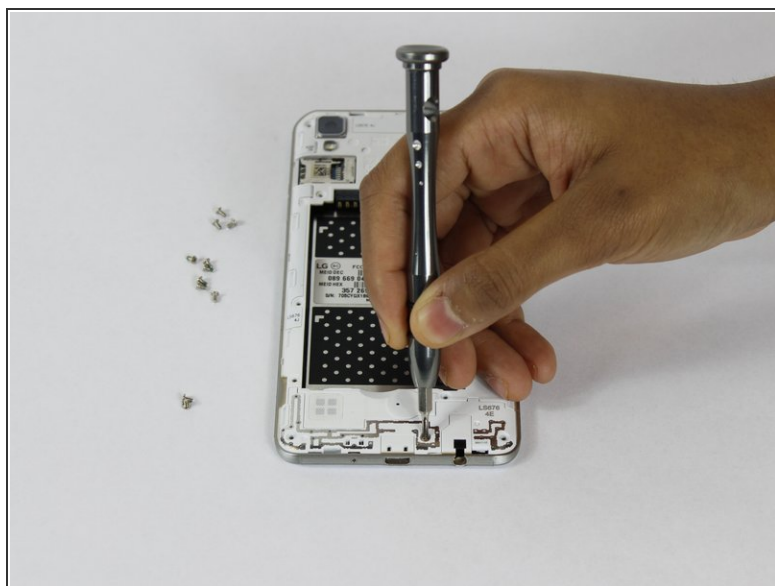
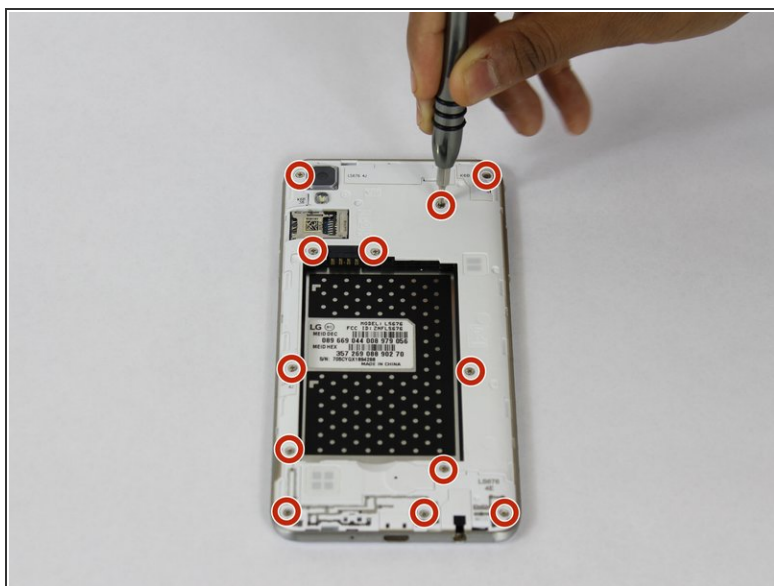
- Insert a fingernail, or plastic opening tool, into the cutout on the back cover and pry outward to remove.

Step 2



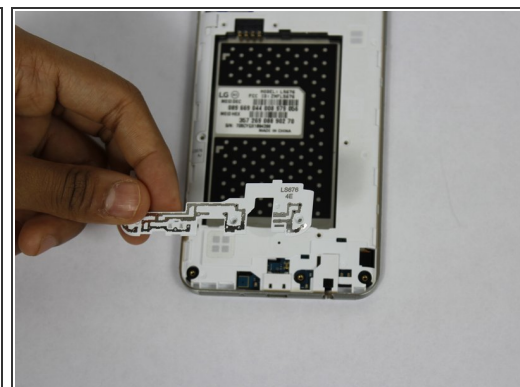
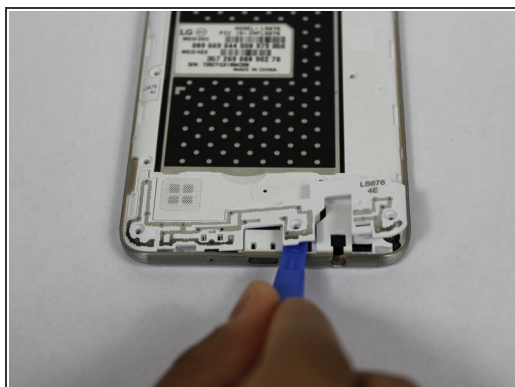
- Pull the battery out of the phone.
- Remove the SD Card by sliding the card out as shown.

Step 3 — Flex Cable



- Remove the twelve 2mm JIS #00 screws from the mid-frame.

Step 4



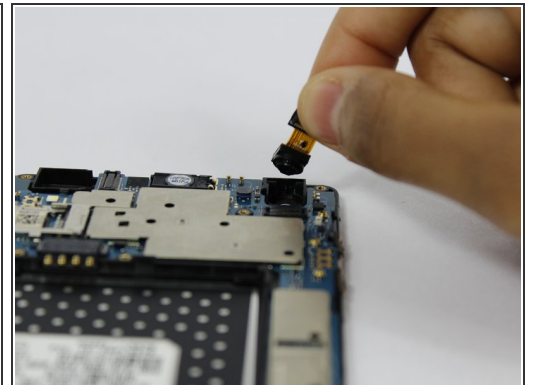
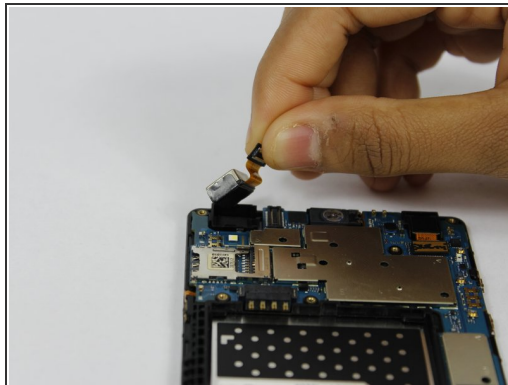
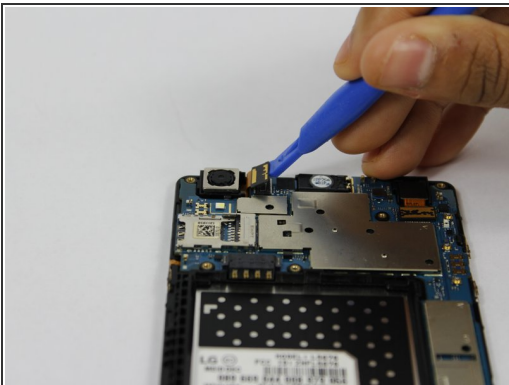
- Using a plastic opening tool, remove the antenna extender from the bottom.

Step 5



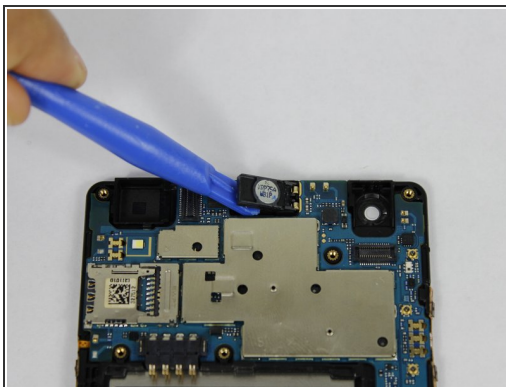
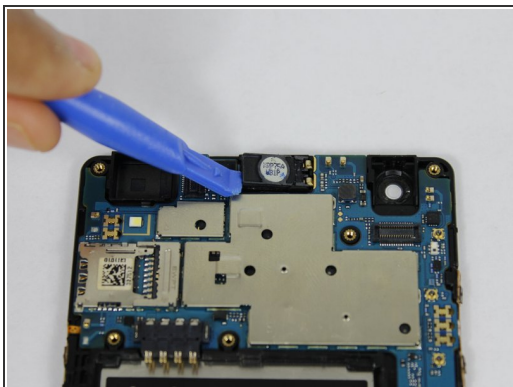
- Using your fingers, remove the mid-frame.

Step 6



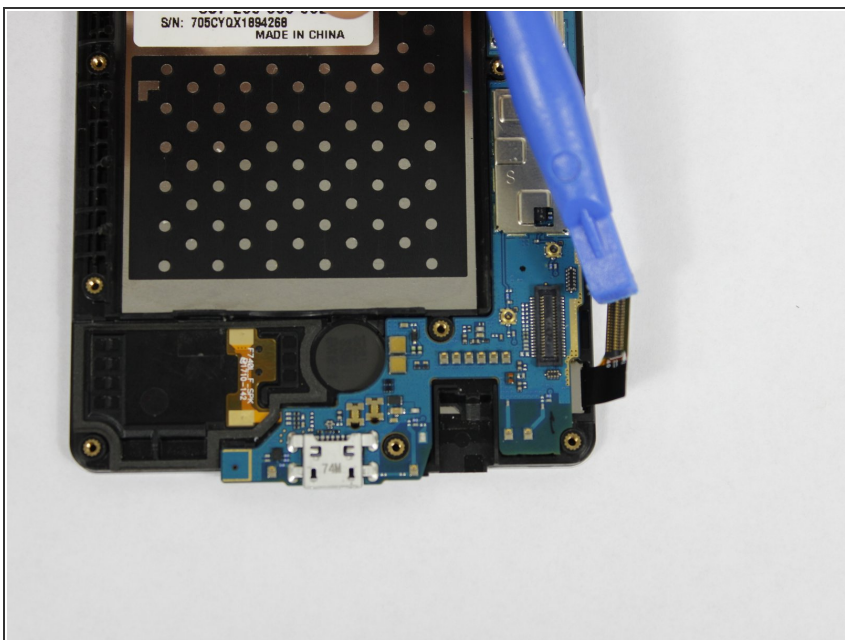
- Use a plastic opening tool to disconnect the front and rear cameras from the motherboard.
- Remove the cameras from the phone.

Step 7



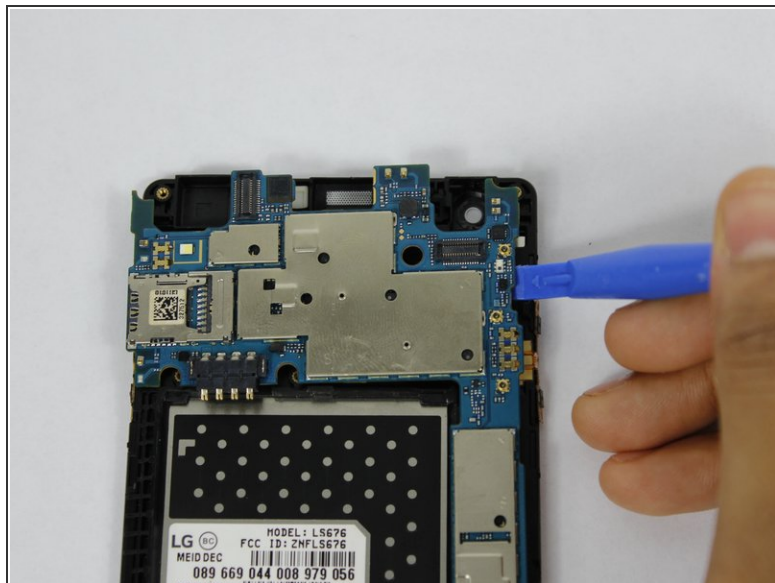
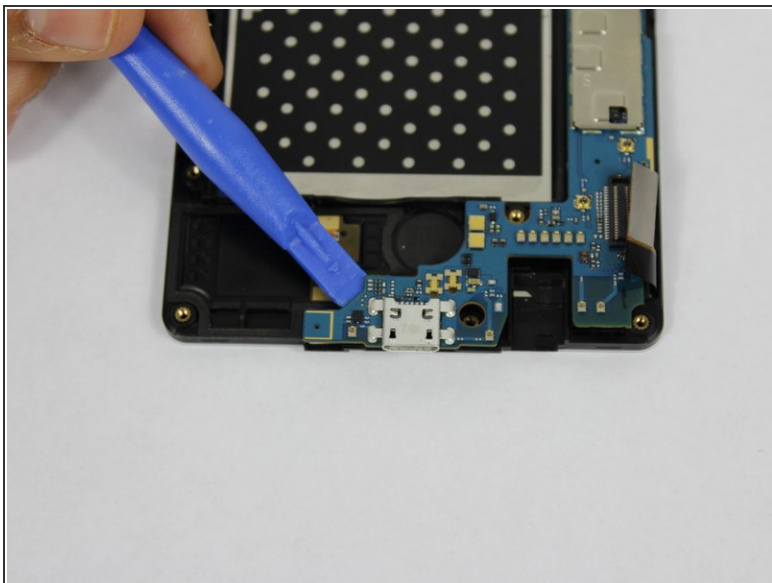
- Using a plastic opening tool, pry up the front facing speaker and remove it from the phone.

Step 8



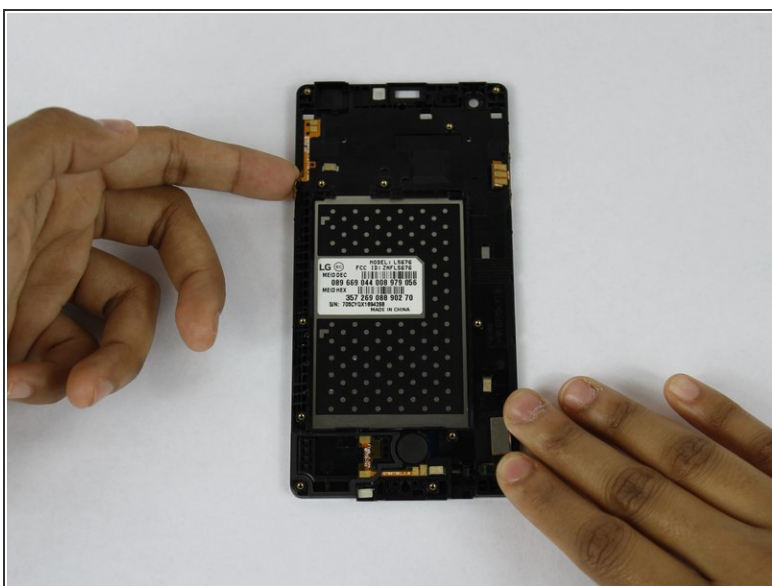
- Disconnect the LCD from the motherboard with a plastic opening tool.

Step 9



- Use a plastic opening tool to pry up the motherboard from the display housing.
- Remove the motherboard from the phone.

Step 10



- Use your fingers to remove the flex cables from the phone.

To reassemble your device, follow these instructions in reverse order.