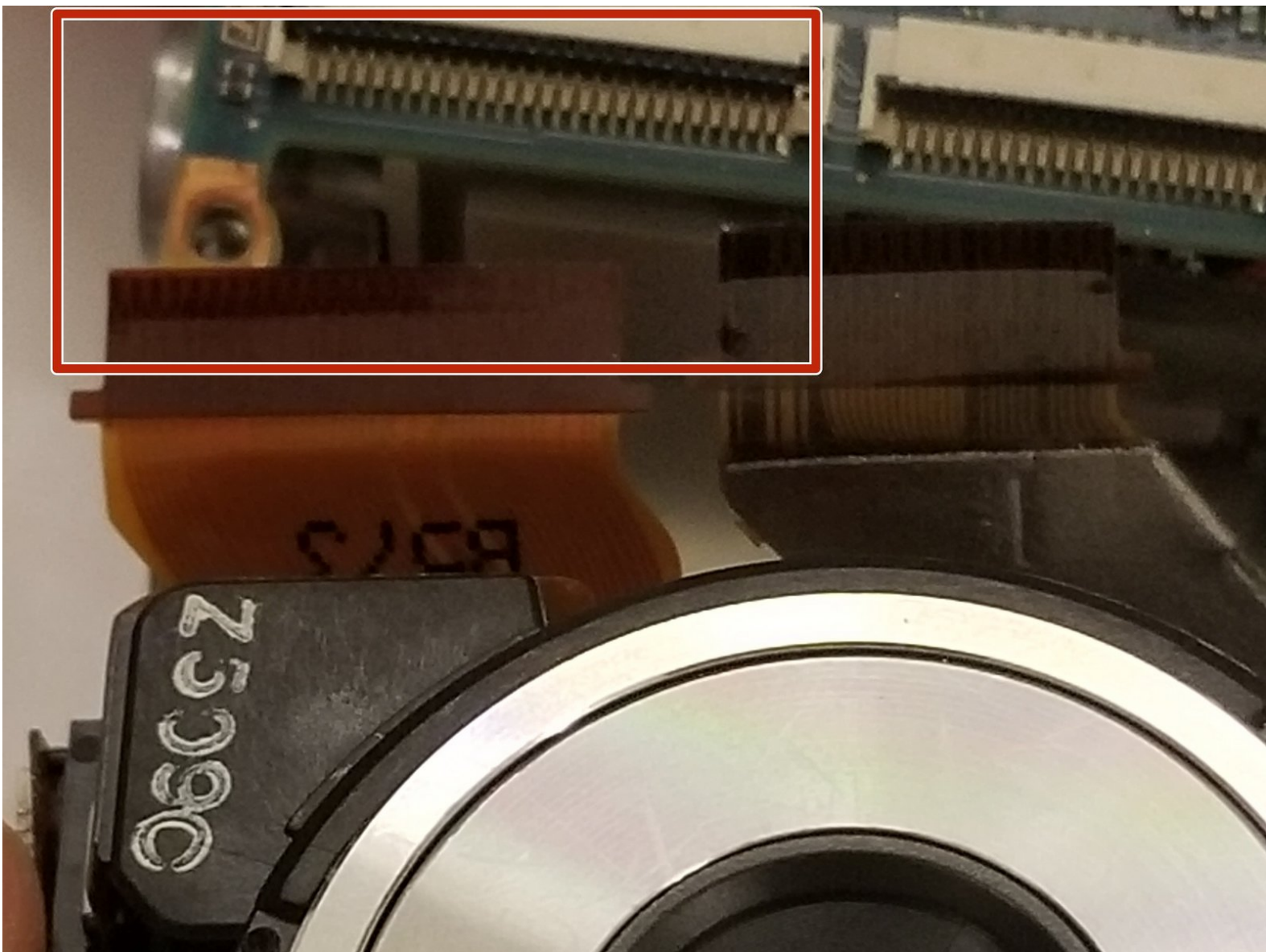




# Sony Cybershot DSC-W80 Lens Replacement

This guide will explain how to safely and successfully remove/replace the Sony Cybershot DSC-W80 camera lens.

Written By: Kierra Taylor



---

## INTRODUCTION

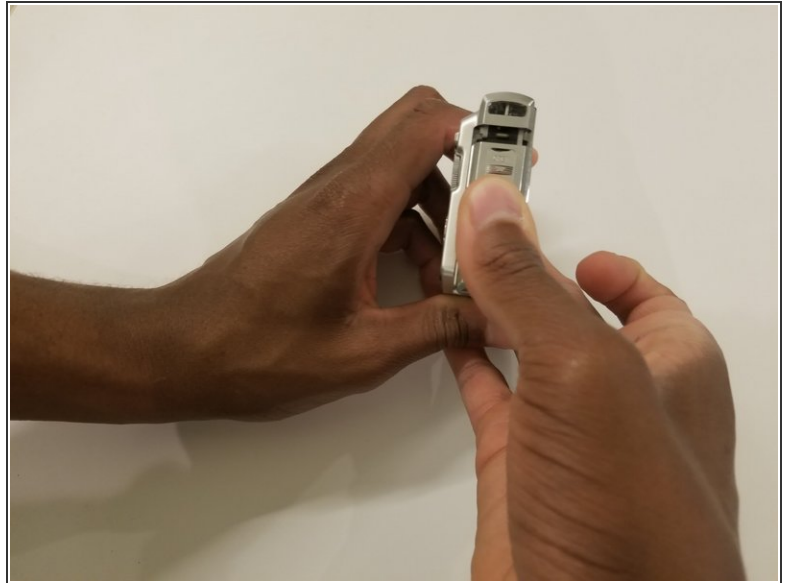
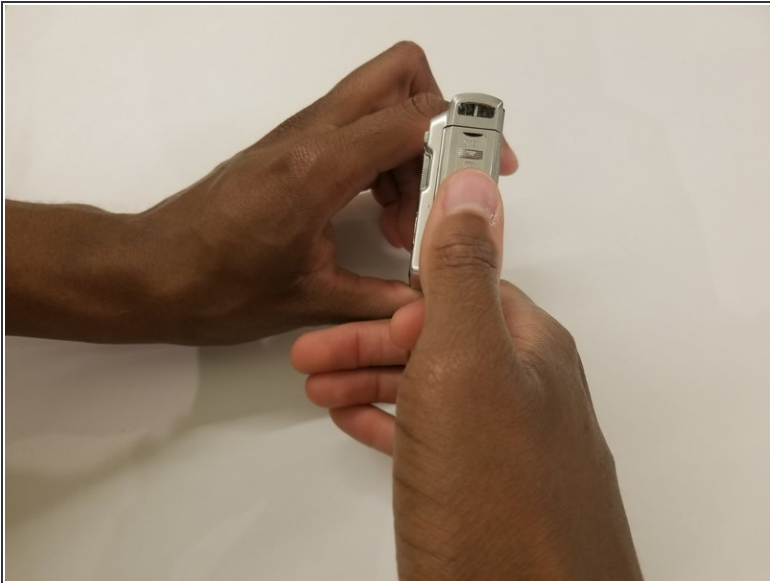
This guide will show how to replace the camera lens on a Sony Cyber-Shot DSC-W80.



### TOOLS:

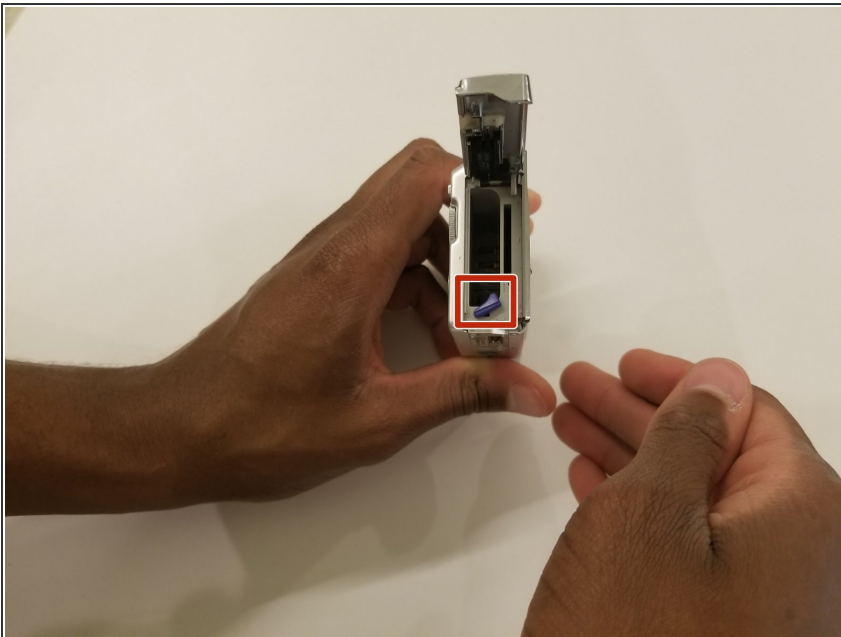
- [Phillips #000 Screwdriver](#) (1)
-

## Step 1 — Battery



- Open the battery cover by sliding it towards you.

## Step 2



- Push the purple latch with your thumb to unlock the battery.
- Pull the battery out.

### Step 3 — Front/Back Panels



- Remove the eight Phillips #000 screws.

### Step 4



- Remove the single Phillips #000 screw found next to the battery latch.

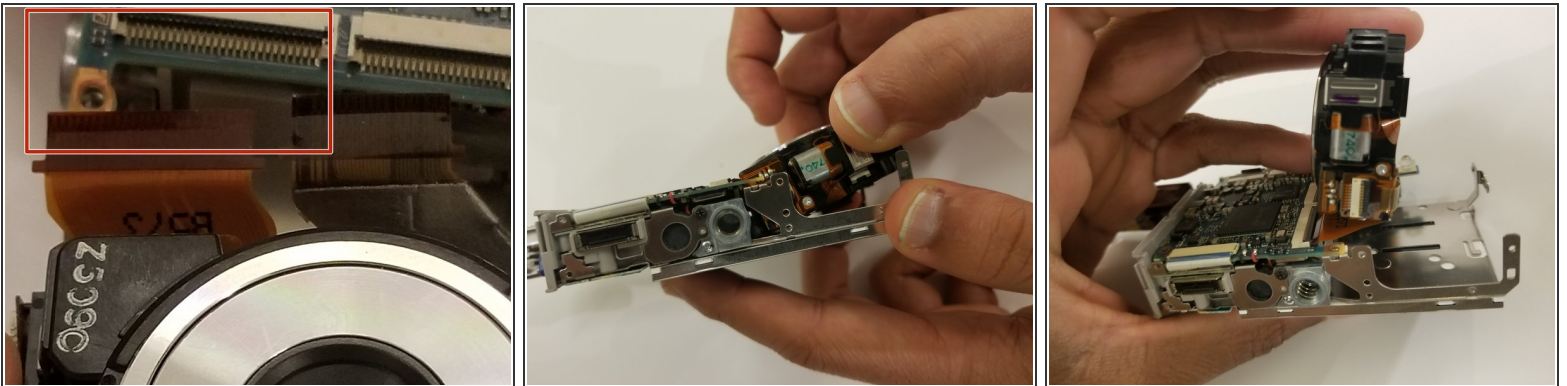


## Step 5



- Remove the middle panel on the side of the device.
- Slowly pry the camera apart at its seam.

## Step 6 — Lens



- Disconnect all ribbon cables by using the flat end of a spudger to lift up the black tabs on the ZIF connectors.
- Once disconnected, use your fingers to lift lens out of the frame.

To reassemble your device, follow these instructions in reverse order.