



HP 15-R263DX Optical Drive Replacement

The guide is a step by step tutorial on removing a defective optical drive.

Written By: Dilan Johnson

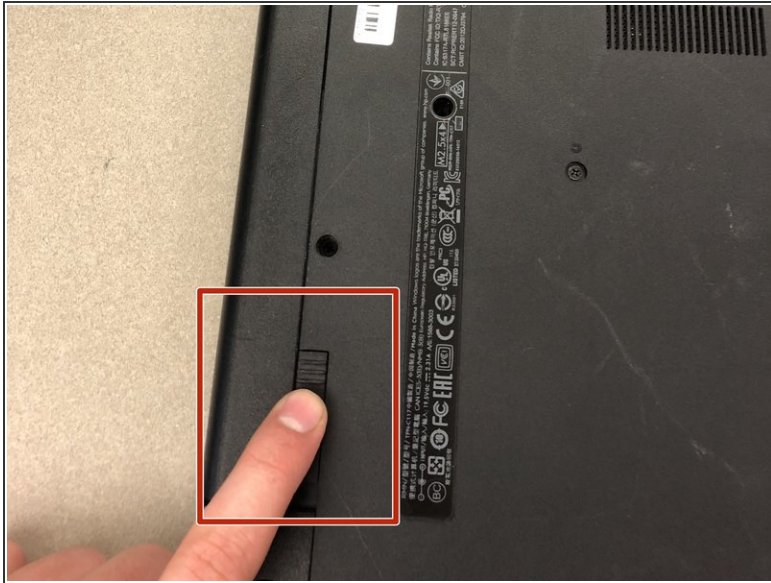




TOOLS:

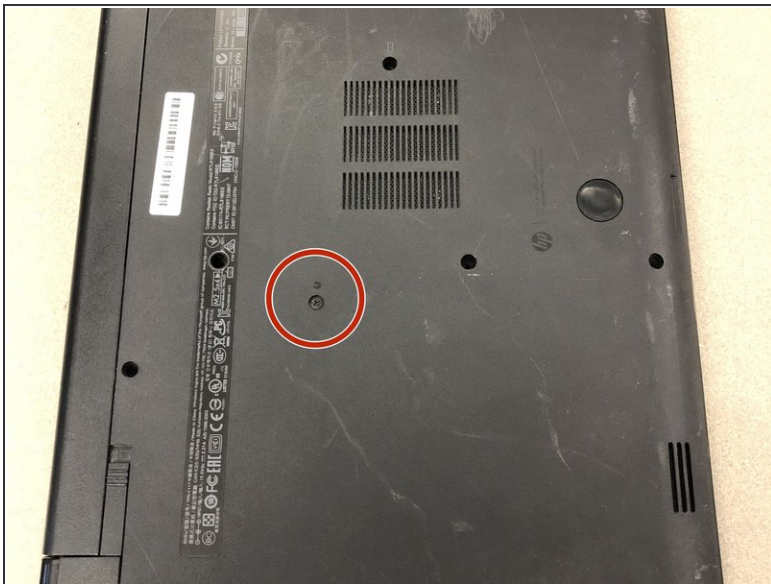
- [Phillips #1 Screwdriver](#) (1)
-

Step 1 — Battery



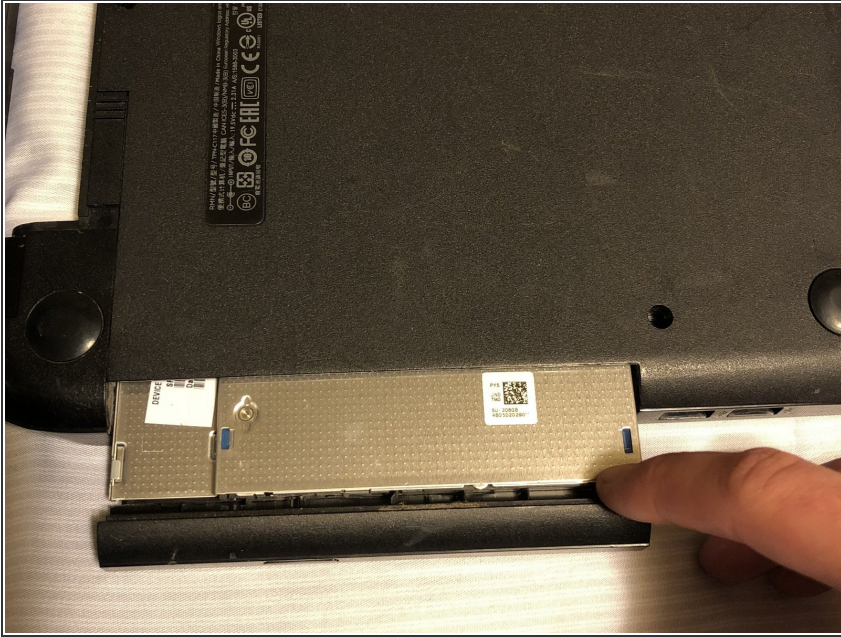
- Eject the battery from the computer by sliding the two clips on the bottom of the computer toward the center of the computer.
- Slide the battery out as shown in the picture.

Step 2 — Optical Drive



- Using a Phillips #1 screwdriver, remove the small screw next to the disc engraving shown in the picture.

Step 3



- Gently slide the optical drive out of the side of the computer.

To reassemble your device, follow these instructions in reverse order.