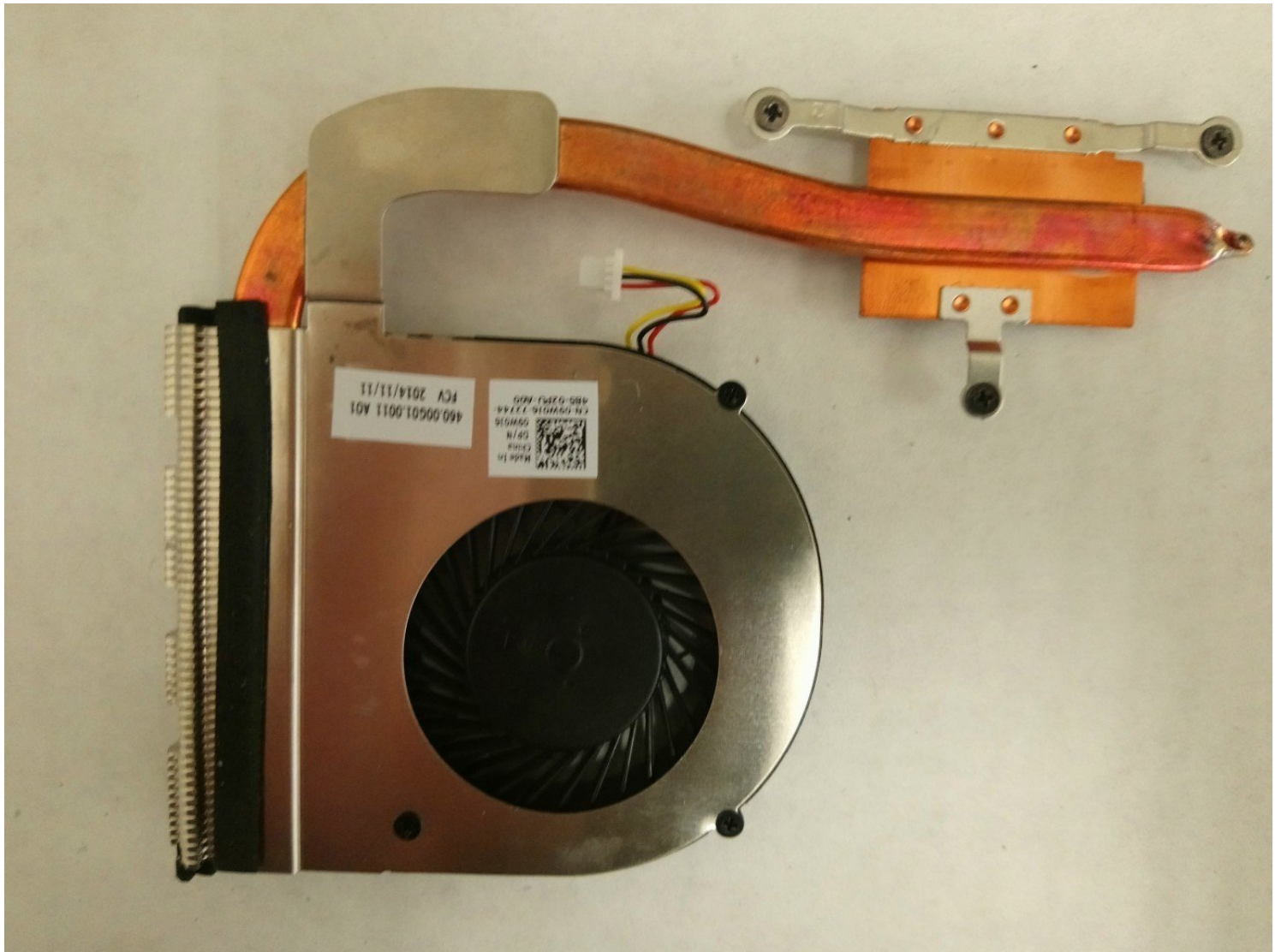




Dell Inspiron 17-5749 Heat-sink Assembly Replacement

Written By: Christopher Tran

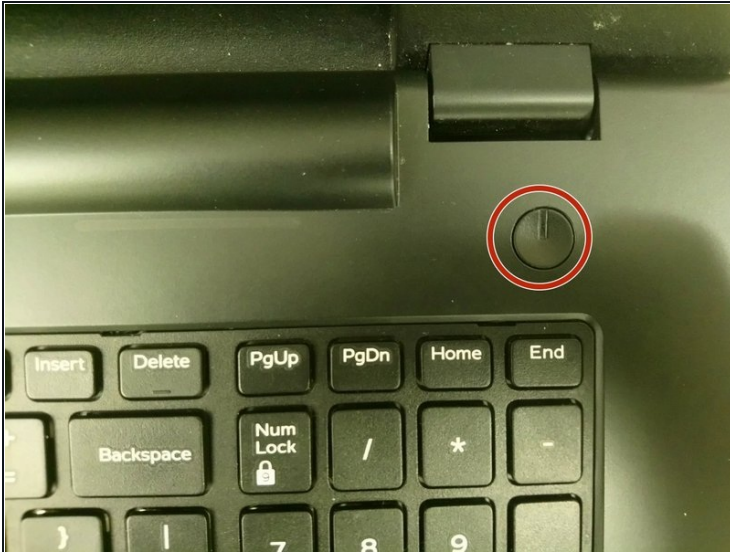


TOOLS:

[iFixit Opening Tool](#) (1)

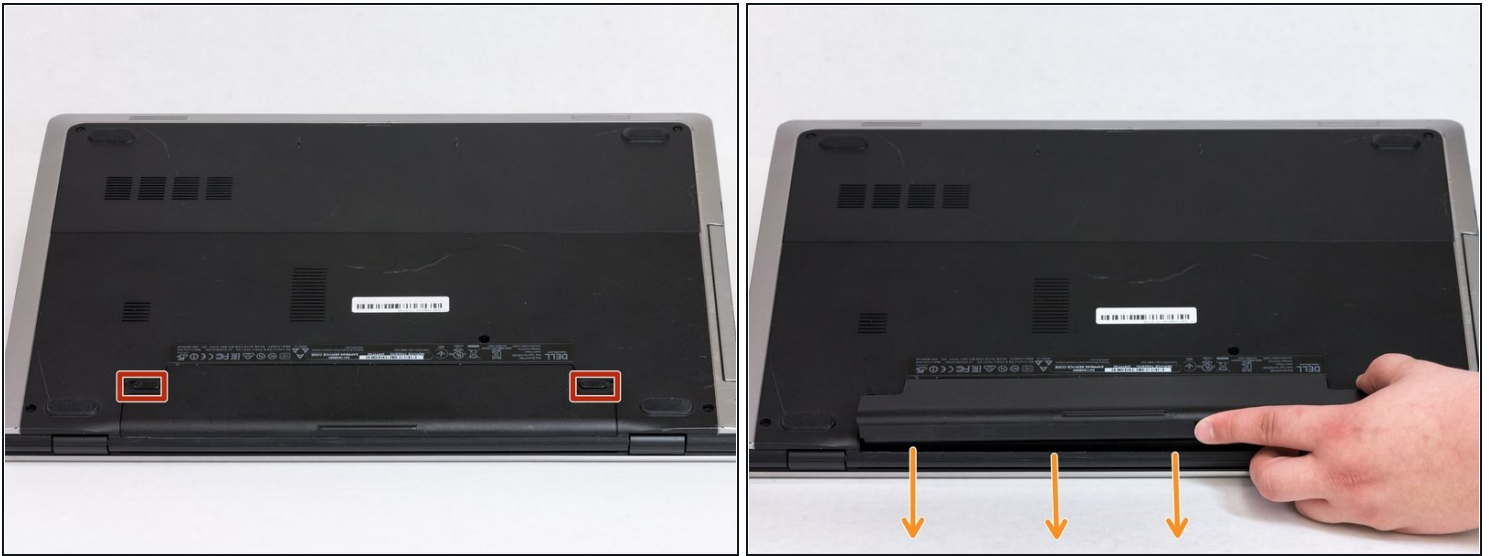
[Phillips #0 Screwdriver](#) (1)

Step 1 — Battery



- Turn off power to the laptop.
- Unplug the charging cable from the laptop.
 - ⚠ Failure to unplug the charging cable could result in damaging the computer or seriously injuring yourself.
- ① Wear the [anti-static wrist strap](#) or work in an uncarpeted area to prevent static shocks. Shocks may damage the components.

Step 2



① First carefully turn the laptop over so you can access the battery.

- Switch each of the battery latches to the "unlocked" position.
- Pull battery upwards by the tab to remove from the laptop.

Step 3 — Back Cover



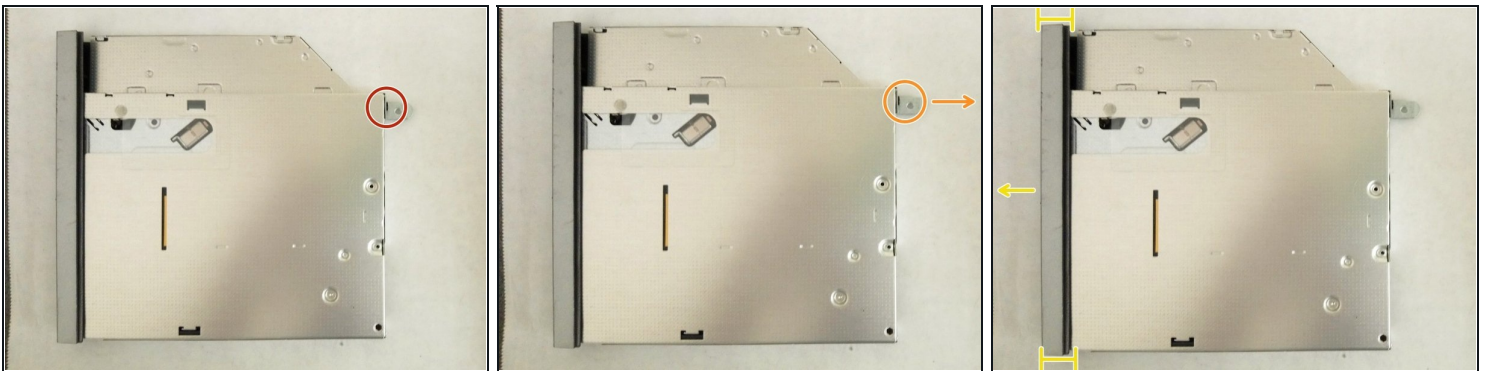
- Remove the two 5.5mm screws that secure the base cover to the computer's base.
- Using the plastic opening tool, carefully pry open the base cover starting from the center.
- Lift the base cover upwards to remove and set it aside.

Step 4 — Optical Drive



- Remove the 5.5mm screw that secures the optical-drive assembly to the computer base
- Using your fingertips, slide the optical-drive assembly out of the optical drive bay.

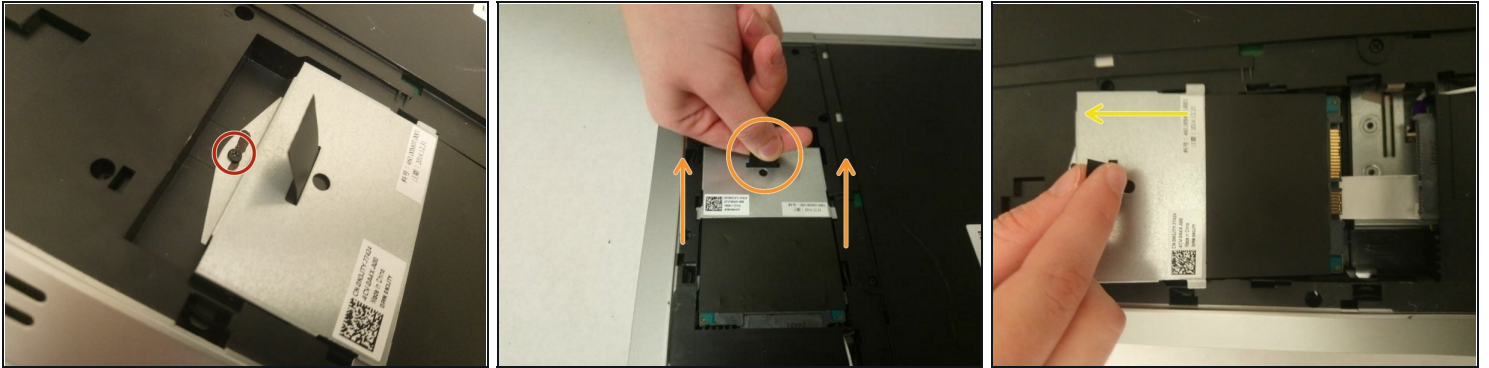
Step 5



***i* This step is only needed if replacing the optical drive.**

- Remove the 2.5mm screw that secures the optical-drive bracket to the optical drive assembly.
- Remove the optical-drive bracket from the optical-drive assembly.
- Carefully pull the optical-drive bezel and remove it from the optical drive.

Step 6 — Hard Drive



- Remove the 2.5mm screw that secures the hard-drive assembly to the computer base.
- Using the pull tab, slide the hard-drive assembly to disconnect it from the system board.
- Lift the hard-drive assembly off the computer base

Step 7 — Wireless Card



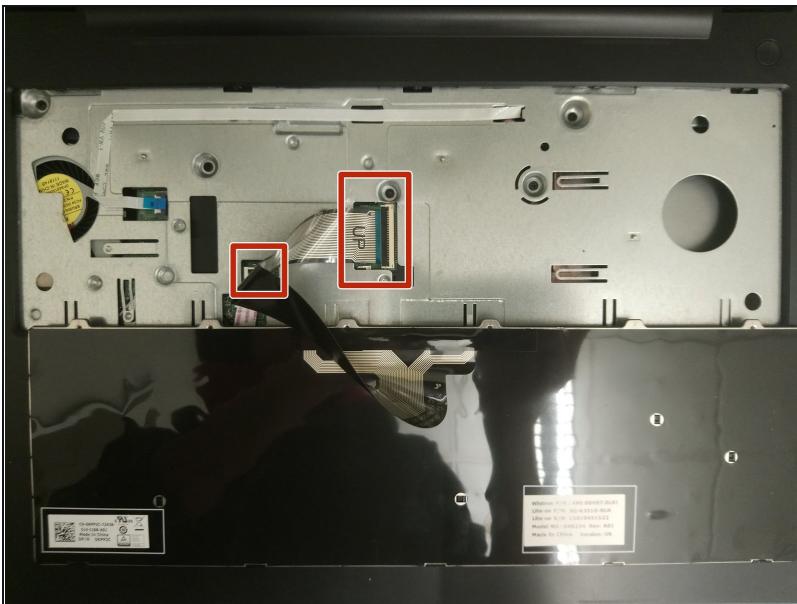
- Disconnect the antenna cables from the wireless card.
- Push the securing tab to release the wireless card.
- Slide the wireless card out of the wireless-card slot.

Step 8 — Keyboard



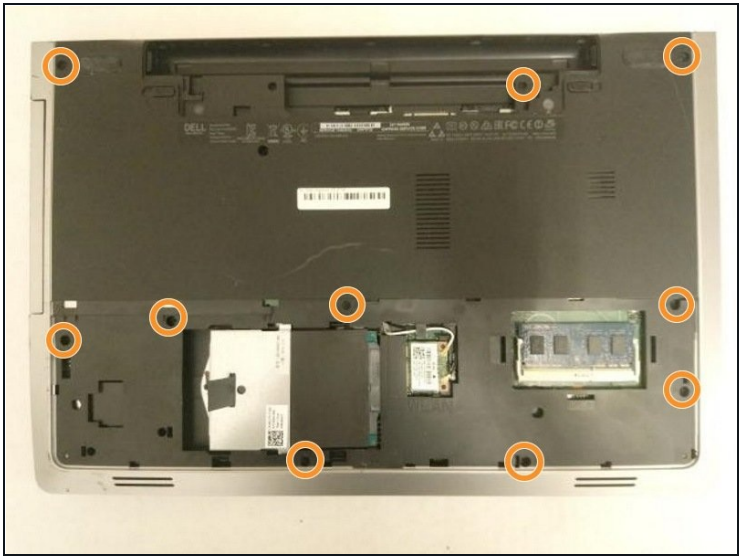
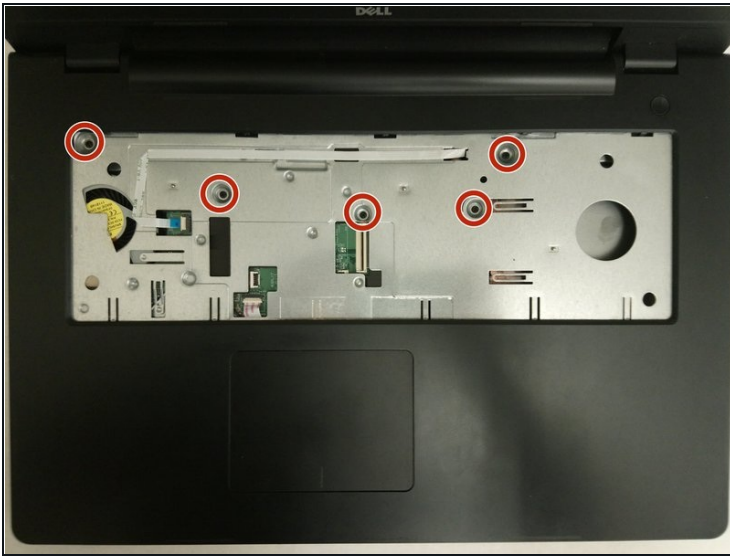
- Turn the computer over and open the display as far as possible
 - Using a plastic opening tool, release the tabs that secure the keyboard to the palm-rest assembly.
- ⚠ Before turning over the keyboard, be careful not to pull the keyboard too far away as it could damage the connected ribbon cables.

Step 9



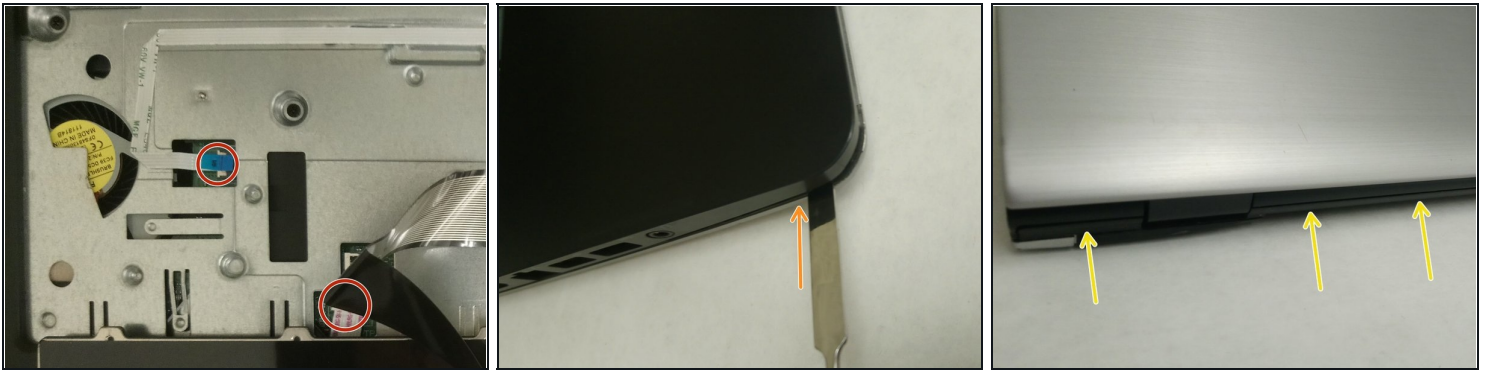
- Carefully turn the keyboard over and place it on the palm rest assembly.
- Lift the latches and disconnect the keyboard cable and keyboard back-light cable from the system board.
- Lift the keyboard along with the cables, off the palm-rest assembly and set it aside.

Step 10 — Palm Rest



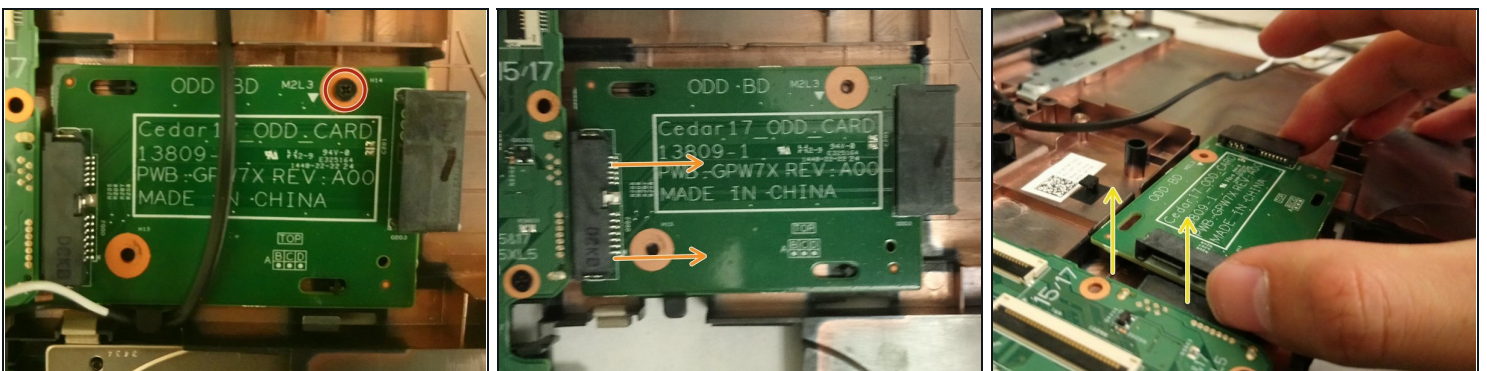
- Remove the (5) 5.5mm screws that secure the palm rest to the system board.
- Close the display and turn the computer over.
- Remove the (10) 5.5mm screws that secure the palm rest to the computer base.

Step 11



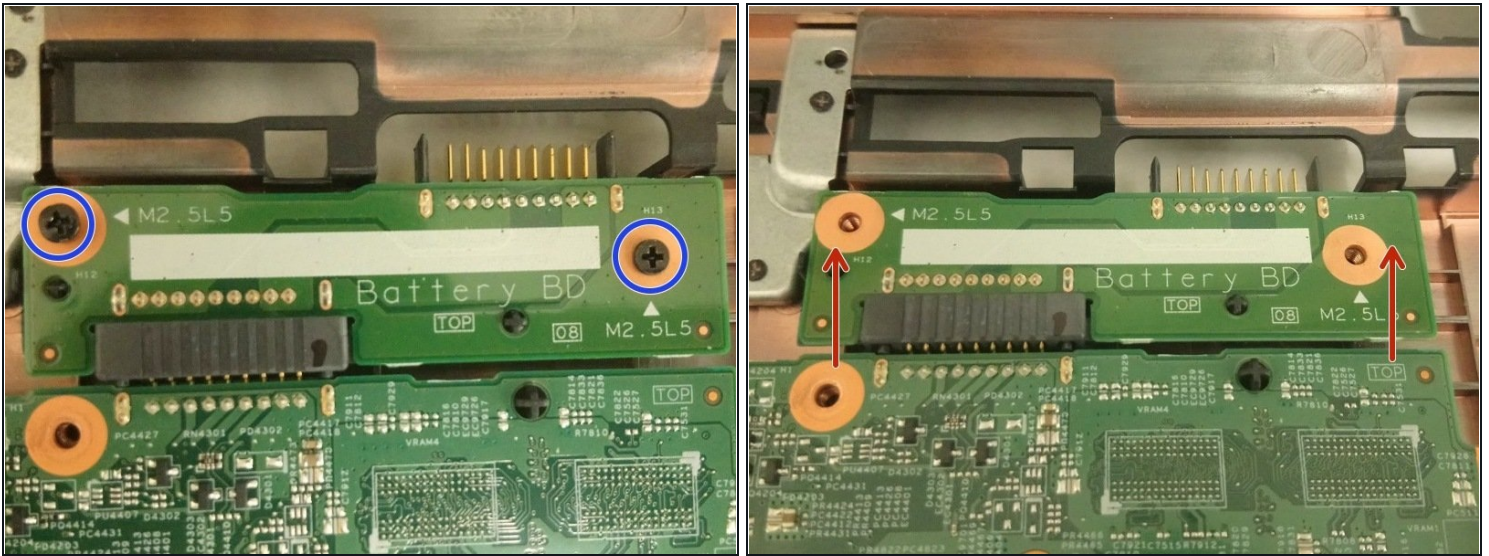
- Turn the computer over and open the display as far as possible.
- Lift the connector latches and disconnect the power-button board cable and the touchpad cable from the system board.
- Using a plastic scribe, gently lift and release the tabs on the palm rest around the computer base including the backside.
- Lift the palm rest away from the display assembly.

Step 12 — Optical-Drive Connector Board



- Remove the 2.5mm screw that secures the optical-drive connector board to the computer base.
- Move wireless card wires covering the board away from the board.
- Slide the optical-drive connector board away from the computer base.
- Lift the optical-drive connector board away from the computer base.

Step 13 — Battery-Connector Board



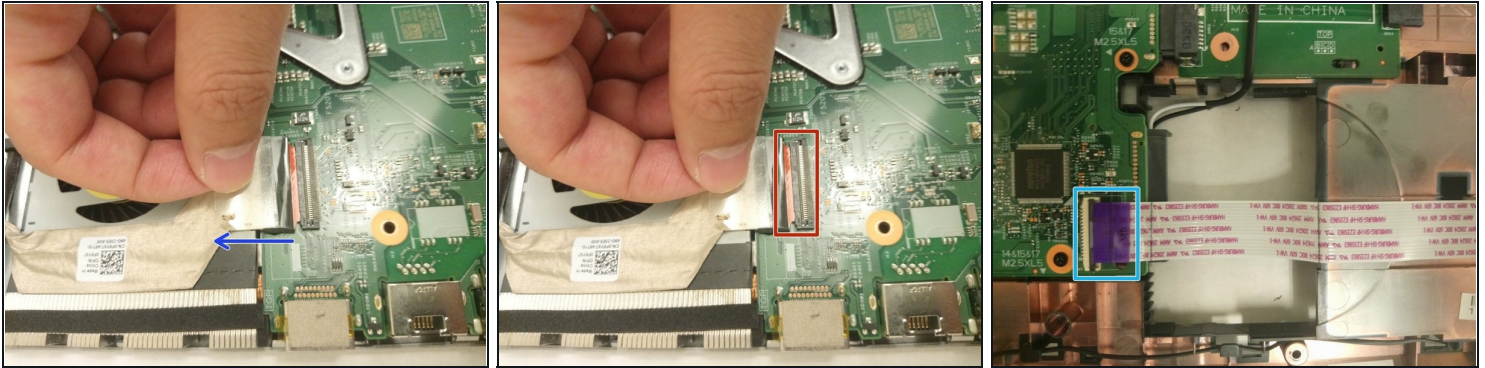
- Remove the 5.5mm screws that secure the battery-connector board to the computer base.
- Carefully lift the battery-connector board to disconnect it from the system board.

Step 14 — System Board



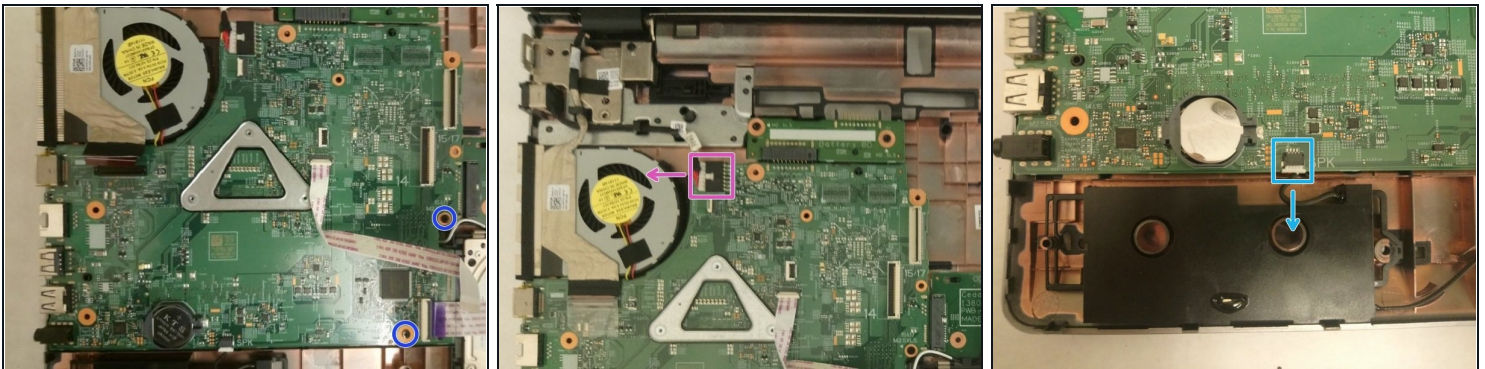
- Close the display and turn the computer over.
- Remove the antenna cables from the routing guides on the computer base.
- Slide the antenna cables through the slot on the computer base.

Step 15



- Turn the computer over and open the display as far as possible.
- Peel off the tape that secures the display cable to the system-board assembly.
- Lift the connector latch and disconnect the display cable from the system board.
- Lift the connector latch and disconnect the I/O board cable from the system board.

Step 16



- Disconnect the speaker cable from the system board.
- Disconnect the power-adaptor port cable from the system board.
- Remove the 5.5mm screws that secure the system-board assembly to the computer base.
- Lift the system-board assembly off the computer base.

Step 17 — Heat-sink Assembly



- Turn the system-board assembly over and place it on a flat and clean surface.
- In sequential order (indicated on the heat sink), loosen the (3) captive 5.5mm screws that secure the heat-sink assembly to the system board.
- Disconnect the fan cable from the system board.
- Lift the heat-sink assembly off the system board.

To reassemble your device, follow these instructions in reverse order.