



LG Tribute HD Motherboard Replacement

A guide for removal and replacement of a faulty LG Tribute HD LS676 motherboard due to overheating, water and sand damage.

Written By: Aalia Mohammed



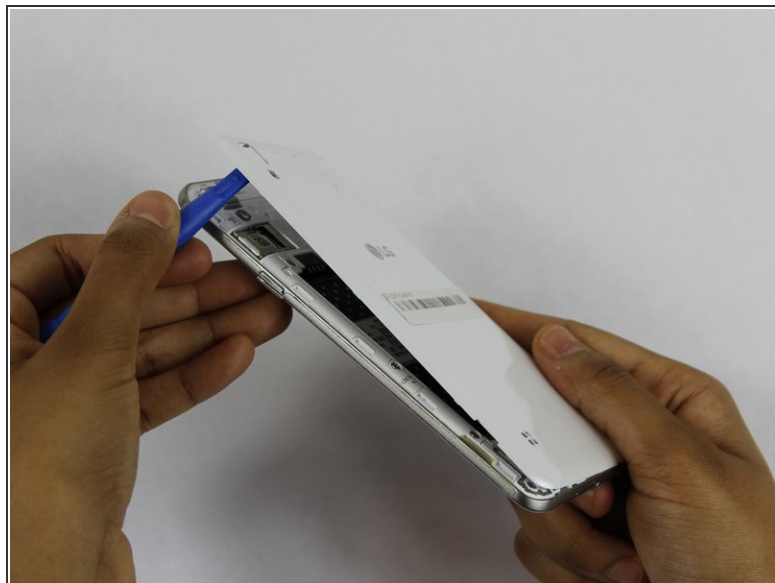
INTRODUCTION

This guide will teach you how to properly replace the motherboard in the LG Tribute HD LS676. The motherboard is a key component that connects and controls all the other phone components. Caution should be taken when replacing it since it is a delicate component that can be easily damaged. Replacement of the motherboard will result in loss of old data and documents previously stored on the phone. It is recommended to externally back-up any important data from the phone before proceeding to replace the motherboard.

TOOLS:

- [iFixit Opening Tools](#) (1)
 - [JIS #00 Screwdriver](#) (1)
-

Step 1 — Battery and SD Card



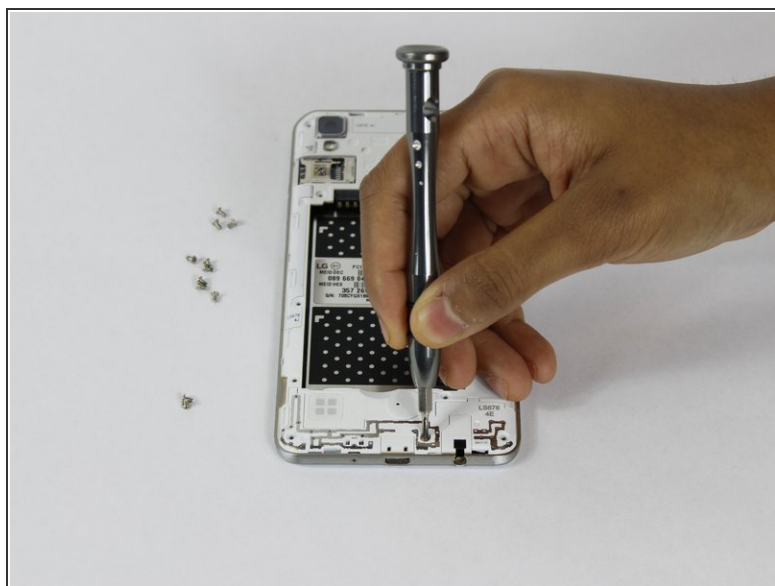
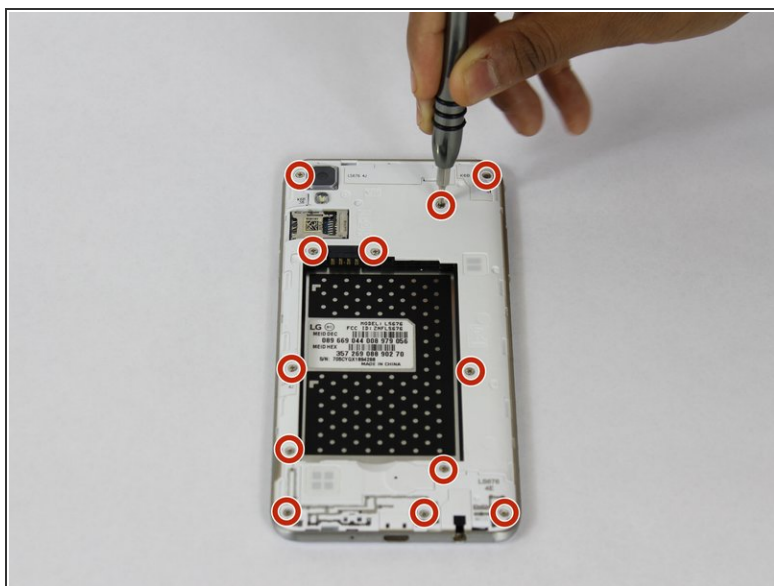
- Insert a fingernail, or plastic opening tool, into the cutout on the back cover and pry outward to remove.

Step 2



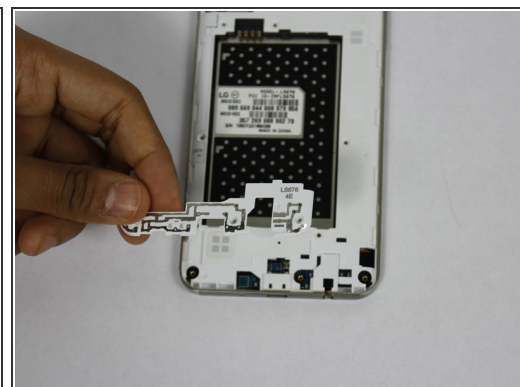
- Pull the battery out of the phone.
- Remove the SD Card by sliding the card out as shown.

Step 3 — Motherboard



- Remove the twelve 2mm JIS #00 screws from the mid-frame.

Step 4



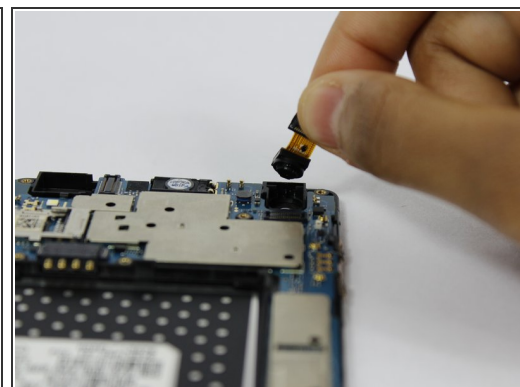
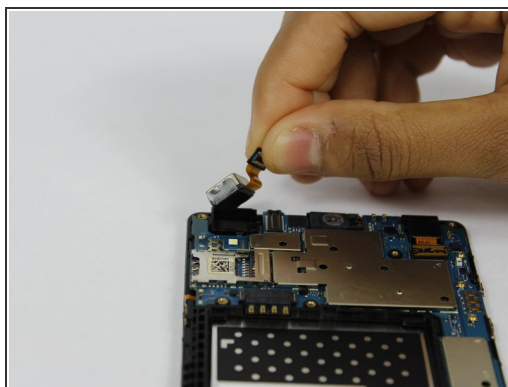
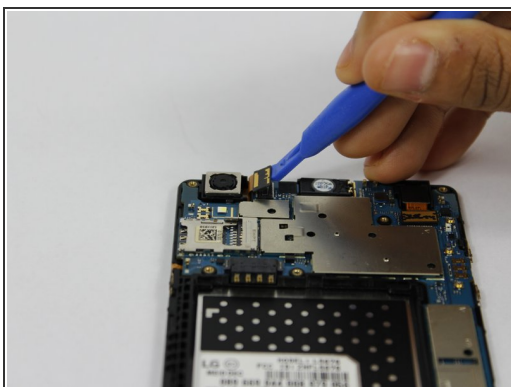
- Using a plastic opening tool, remove the antenna extender from the mid-frame.

Step 5



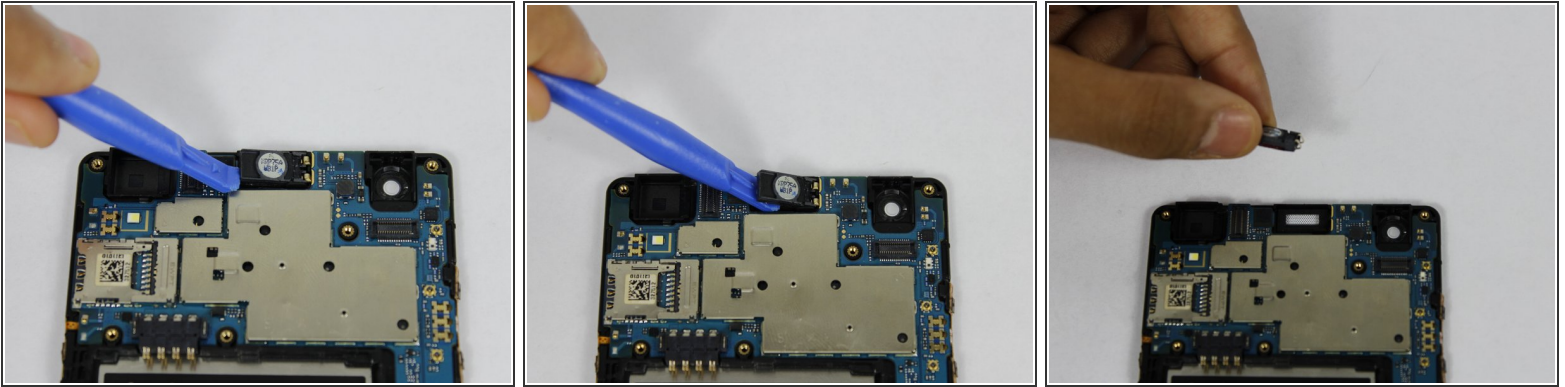
- Using your fingers, remove the mid-frame.

Step 6



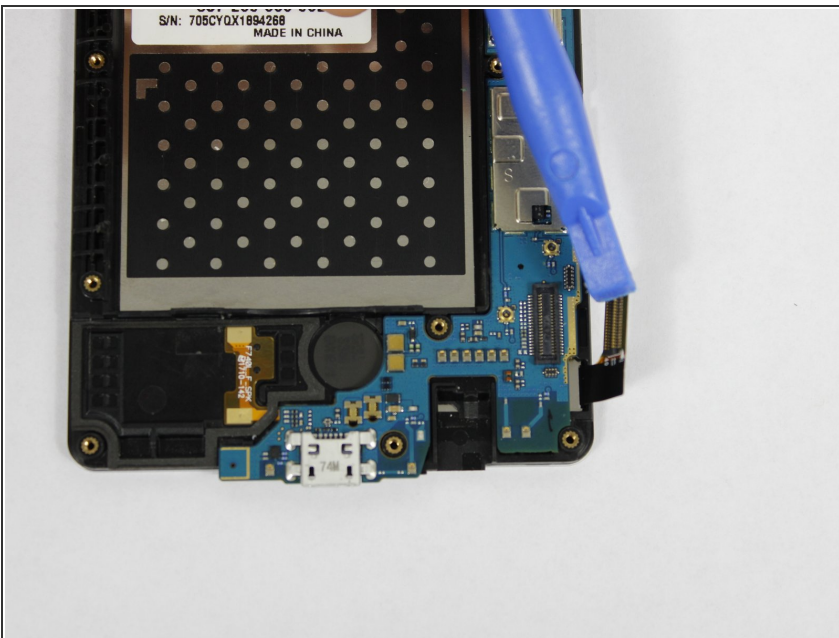
- Use a plastic opening tool to disconnect the front and rear cameras from the motherboard and pull out to remove.

Step 7



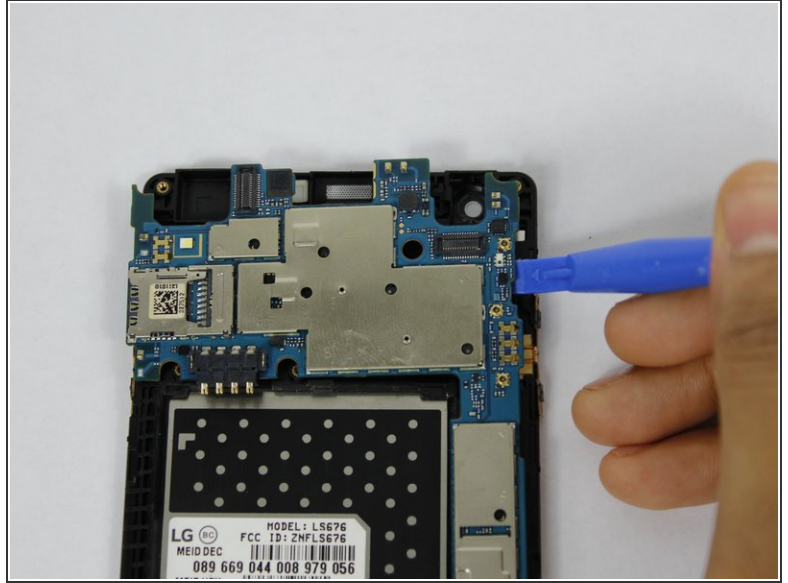
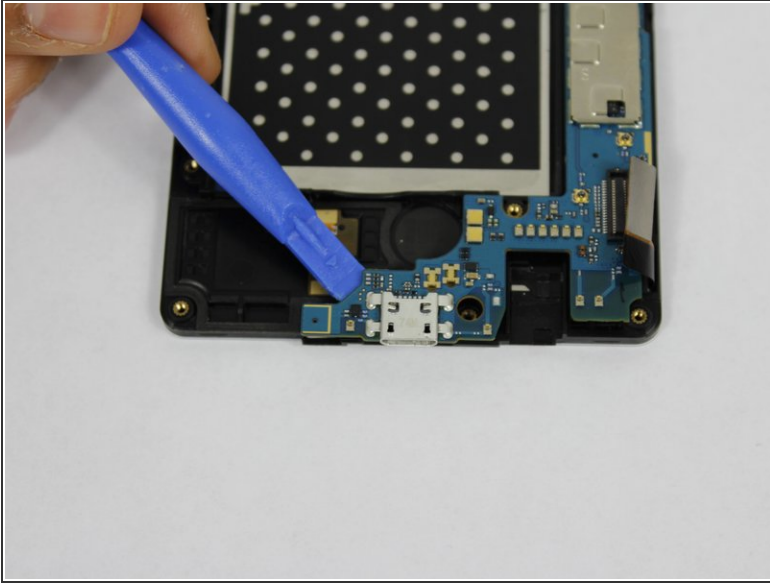
- Using a plastic opening tool, pry up the front facing speaker and remove from the phone.

Step 8



- Disconnect the display from the motherboard.

Step 9



- Use a plastic opening tool to pry up the motherboard and pull out to remove.

To reassemble your device, follow these instructions in reverse order.