



# Sony DVD-ROM Unit(DDU1615) Teardown

This is a tutorial on how to perform a teardown of this DVD-ROM Unit. Many people perform this to remove the laser diode.

Written By: Owen Preece



---

## INTRODUCTION

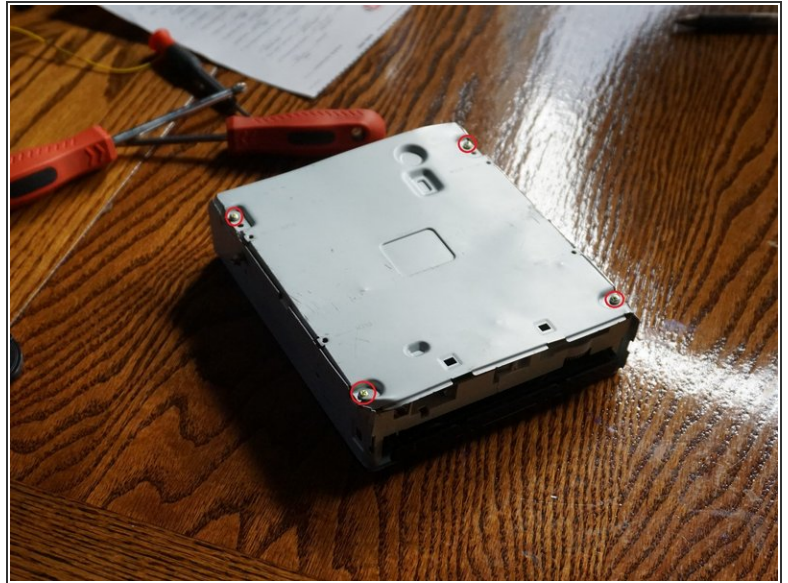
I will teach you how to deconstruct a DVD-ROM unit into it's base assembly and then show what many people use to build a burning laser.

---

### TOOLS:

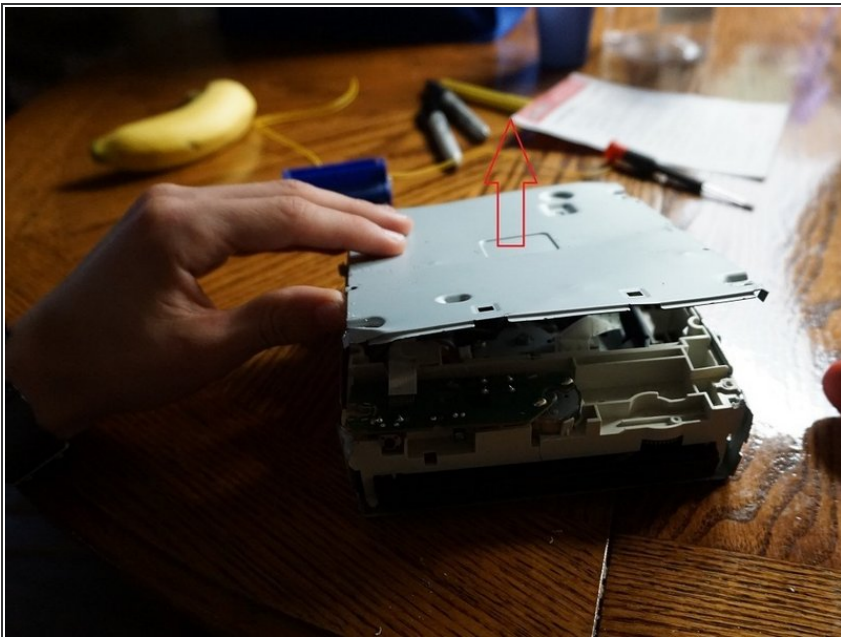
- [M3x6 fitting screwdriver](#) (1)
-

## Step 1 — Sony DVD-ROM Unit(DDU1615) Teardown



- Remove outside screws using a screwdriver that fits a M3x6 screw

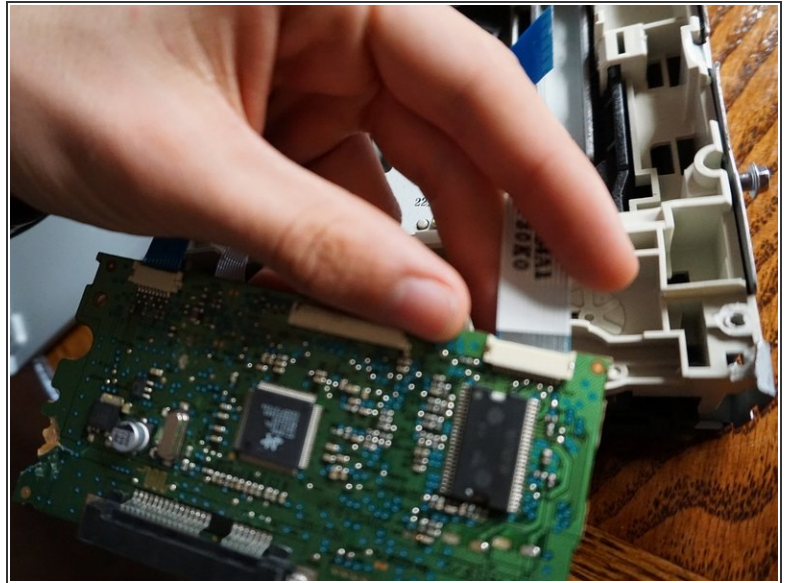
## Step 2



- Gently pry up the top casing with the model sticker facing down. Apply a wiggling motion side to side if necessary

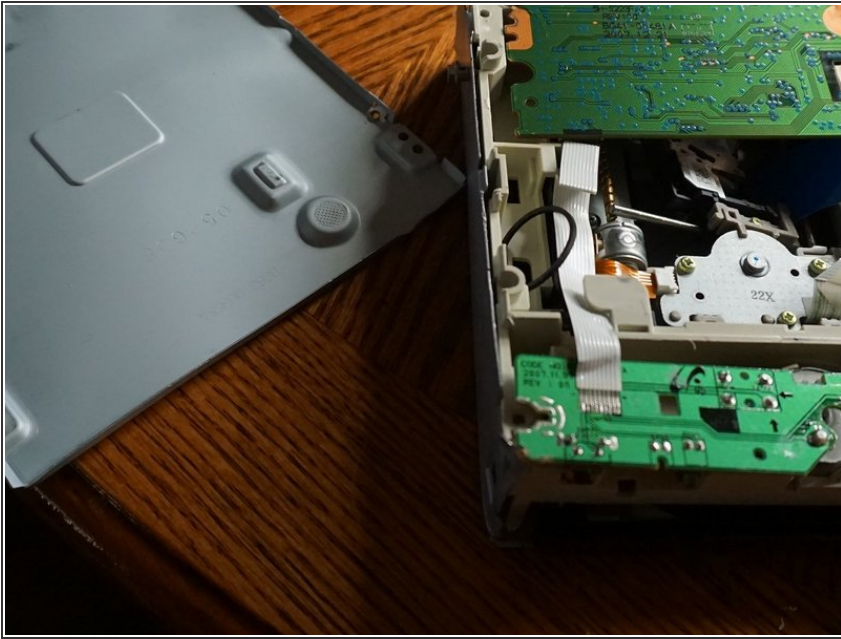


### Step 3



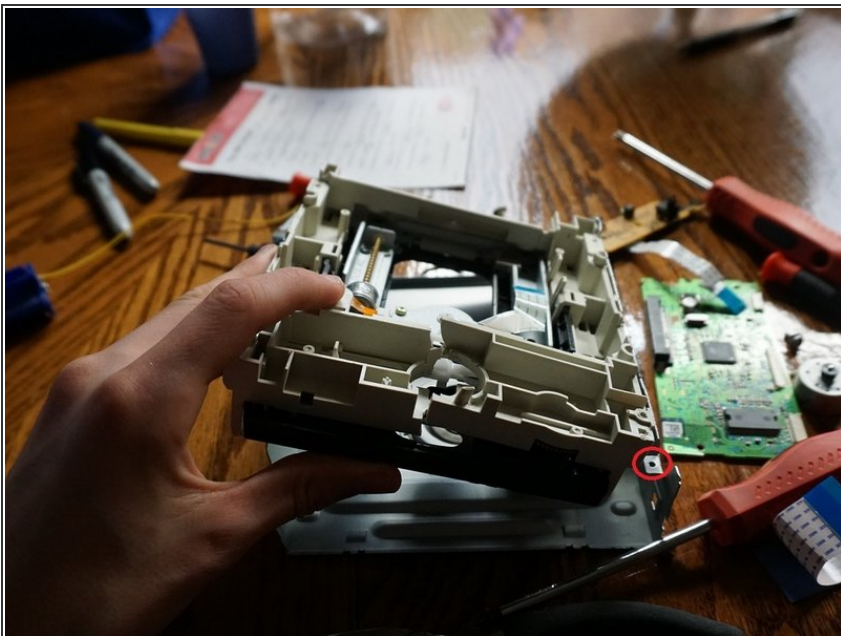
- Remove all detachable ribbons by wiggling back and forth on a horizontal axis

## Step 4



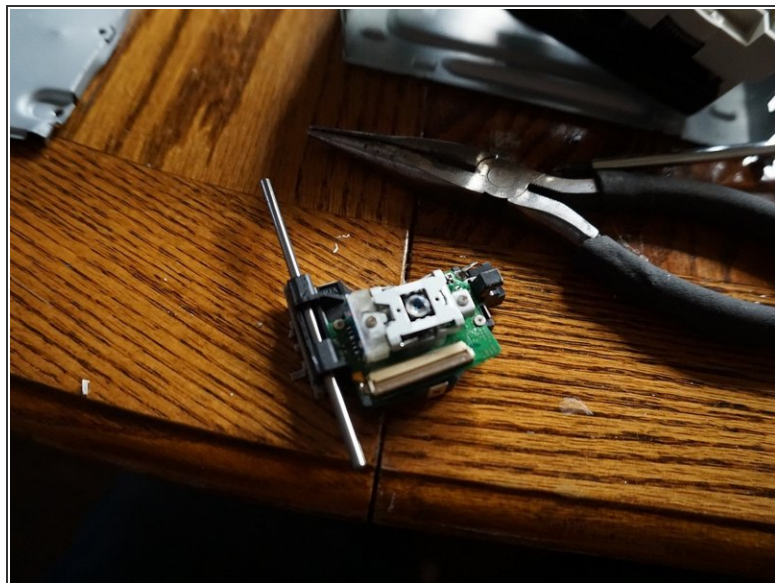
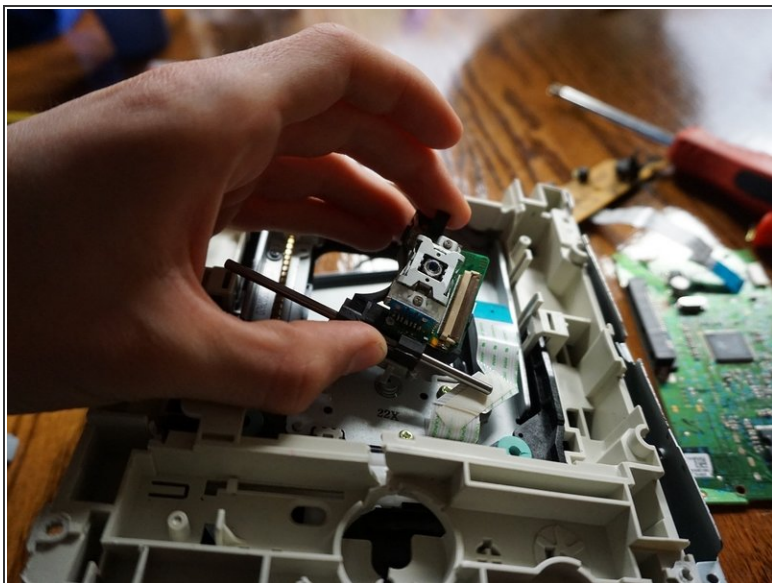
- Check for any remaining screws around the edge of the board, if there are none apparent double check the ribbons and the slide the board back until it slides free

## Step 5



- To remove the tan plastic, ensure all of the screws have been removed on the metal tabs shown in red
  - apply a teetering pull apply more lift to one side that the other
- ⚠ My part was already broken! It might be slightly different for you

## Step 6

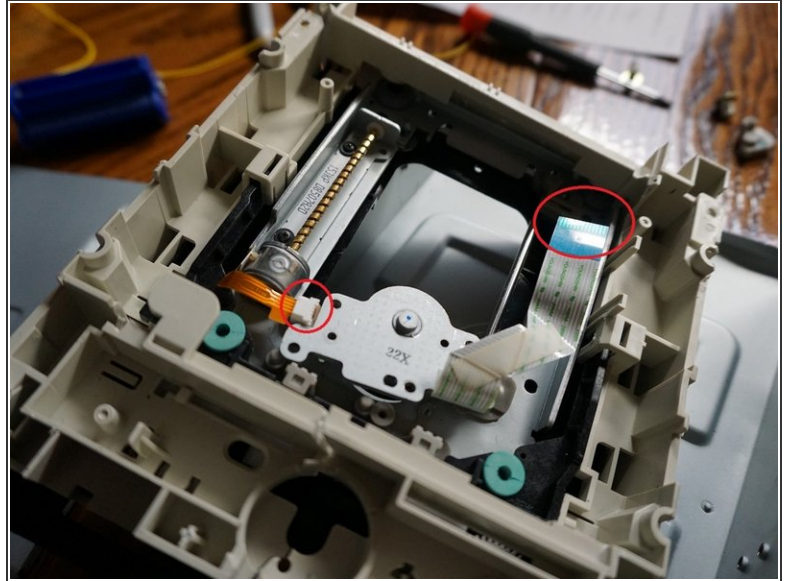
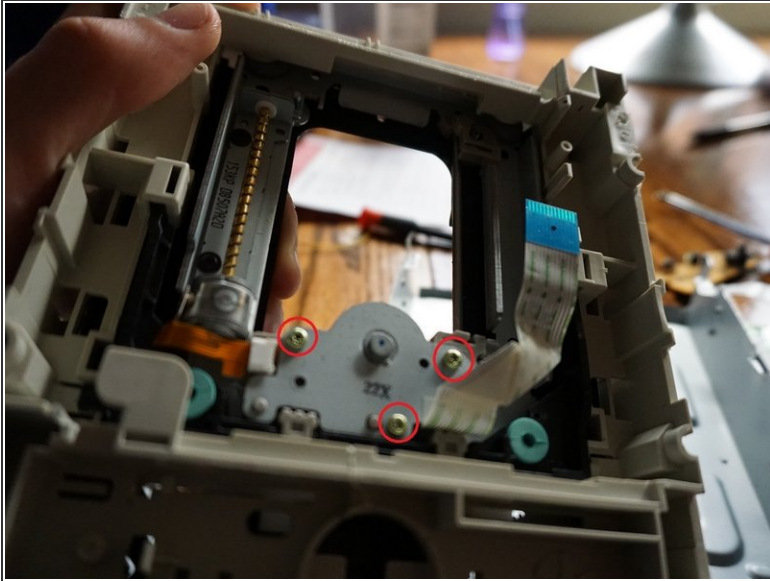


- Now most inside components should be loose and removable
- This is a picture of the removal process of the laser diode component(it is still encased in the moving and refraction related parts)

⚠ Ensure to hand this with care!

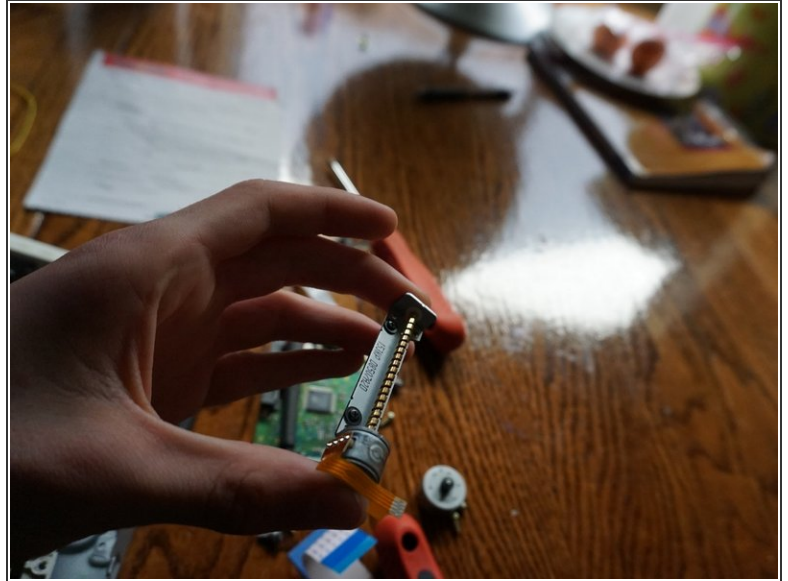
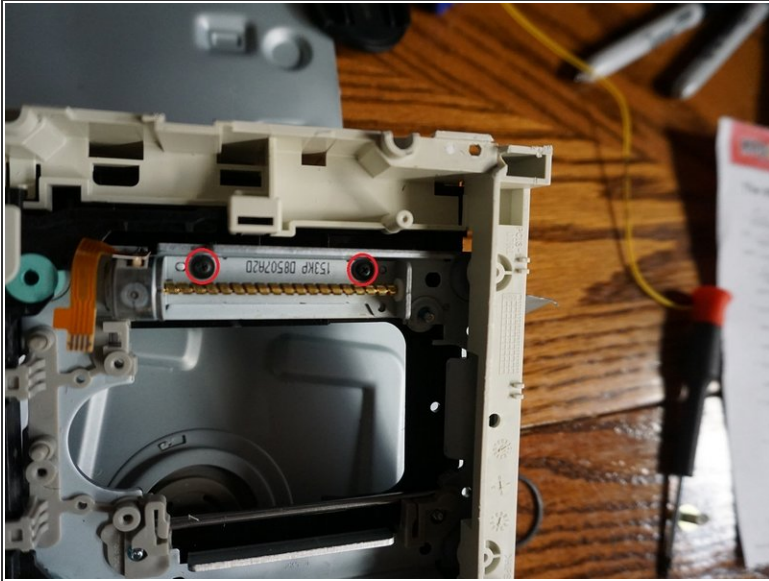


## Step 7



- Remove the three screws surrounding the second component
- Remove and check for removal of all ribbons on this component(note the orange is labeled "lead free")

## Step 8



- Undo the screws on the side of the stepper component with A DIFFERENT SCREWDRIVER TO AVOID STRIPPING
- The screwdriver will be smaller than the M3x6 fit
- Gently extract after screw removal



## Step 9



- flip the leftovers over and slide the peice of black plastic far forward to remove the screws holding the metal in place
- Slide the disk tray back if you can not remove it completely and proceed to unscrew the final and 3rd screw.

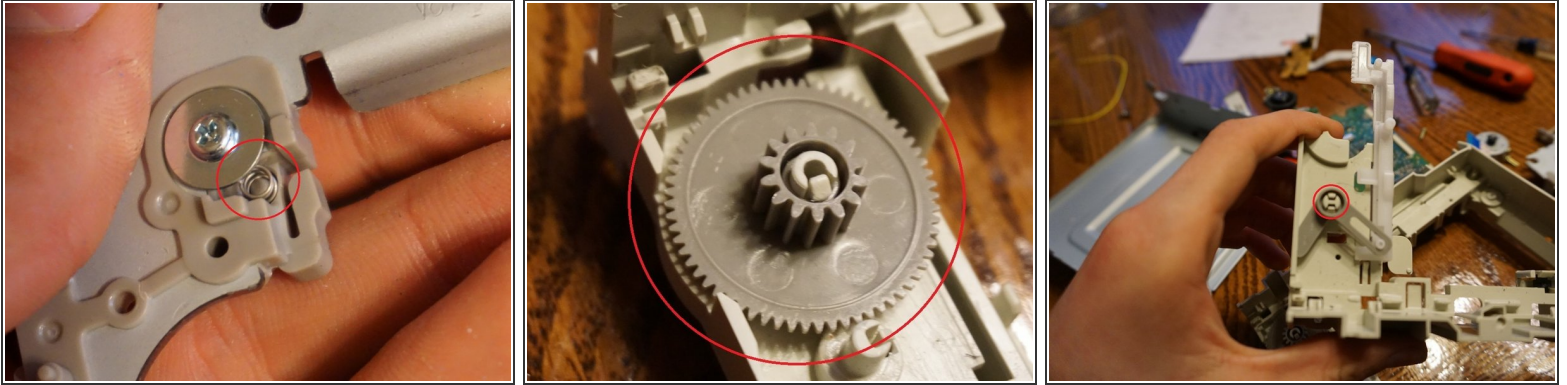
⚠ You will need a different screwdriver! Use the wiggle test to find the right fit! They will strip extremely easily!

## Step 10



- Gently remove any clips to allow the only holder to be the rubber wheels to be holding it(circled in red)
- Gently apply pressure to pull away from the main casing
- Un-clip the clips seen in photo 2

## Step 11



- To remove the pole that was in the picture before it was removed, push down on the spring with a screw at one end removed the tilt one end up and remove
- To remove toothed gears push the clip inside the spire in the middle of the gear, and maintaining pressure on the clip pull away the gear
- Apply the same technique as in picture 2 but with the clip in picture 3

## Step 12 — Finished!



- Your pretty much done with this deconstruction

 If you wish to remove the laser diode be careful! Picture #3 is evidence of my failure to this