



Shark Professional Steam Pocket Mop Water Tank Replacement

If your Shark Professional Steam Pocket Mop water tank is cracked or leaking this guide will take you through the process of removing it.

Written By: Brett Wilson



INTRODUCTION

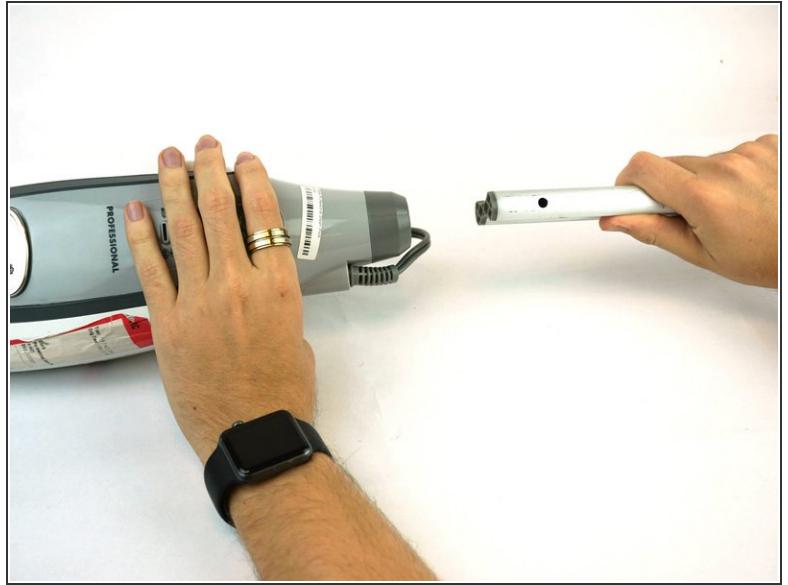
Removing the water tank will require removing the front panel and opening the mop body. Once accessible though, replacement is quite simple. Before doing any disassembly on your Shark Professional Steam Pocket Mop, make sure to unplug the mop and empty the water tank for your safety.



TOOLS:

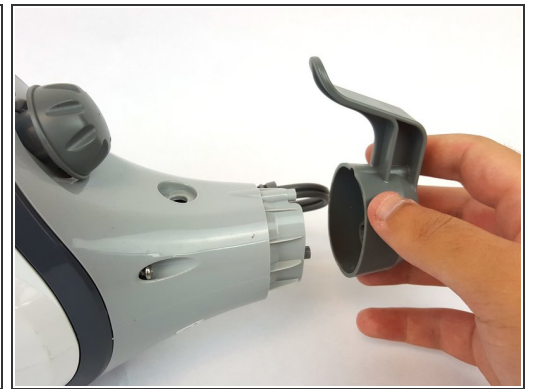
- [T10 Torx Security Bit Screwdriver](#) (1)
 - [Phillips #2 Screwdriver](#) (1)
 - [Metal Spudger](#) (1)
-

Step 1 — Shark Professional Steam Pocket Mop Front Panel Disassembly



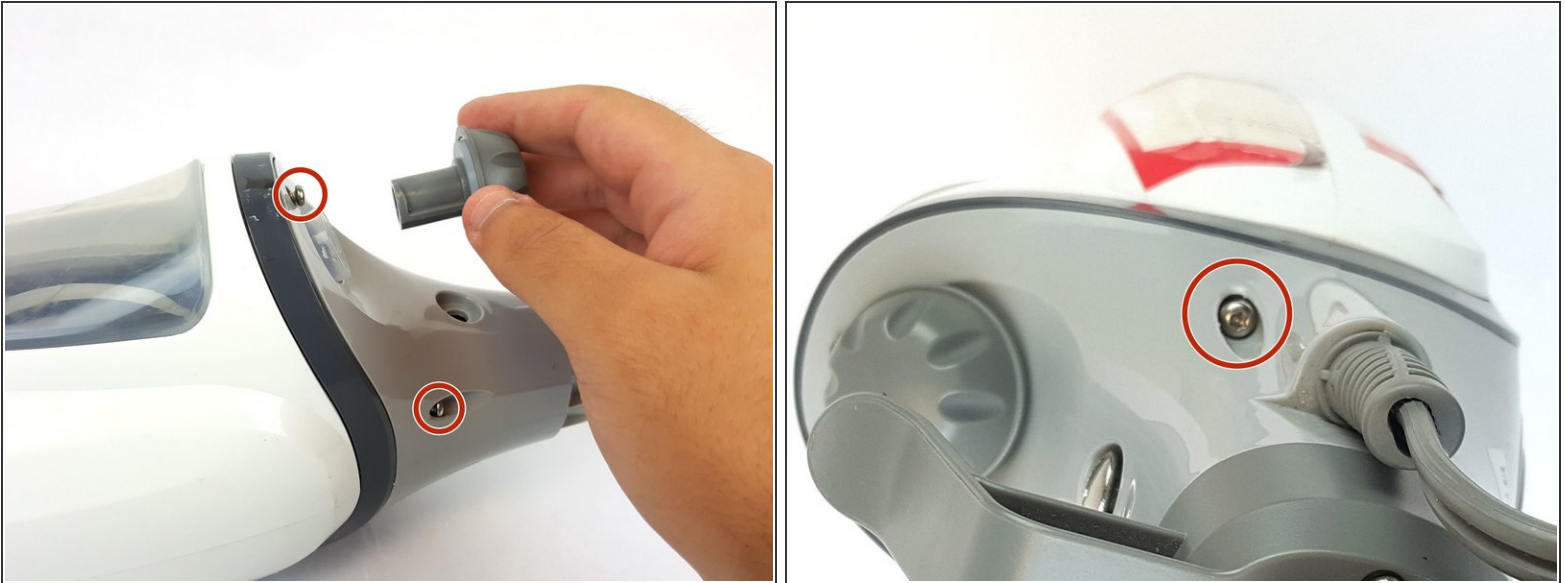
- Unwrap the power cord from the handle.
- Remove the 56.0 mm Phillips head #2 screw located above the water tank cap.
- Pull the handle to separate it from the body.

Step 2




- Remove the three 12.0 mm Phillips head #2 screws where the handle connects to the body.
- Remove the plastic cap.

Step 3



- Remove the three 16.0 mm T10 Torx screws near the top of the body and remove the water tank cap.

 The third screw is directly on other side of the bottom screw in the photo.

Step 4



- Remove steam control button cover with a metal spudger.
- Remove the two 12.0 mm Phillips head #2 screws underneath.
- Remove the plastic rim with clear plastic cover.

Step 5



- Remove the Shark logo decal on the front of body using a metal spudger.
- Remove the two 12.0 mm Phillips head #2 screws underneath.
- Pull out the plastic cover to remove.

Step 6



- Pop off the grey front plate to expose the control panel and screws necessary to open mop body.

Step 7 — Shark Professional Steam Pocket Mop Open Mop Body



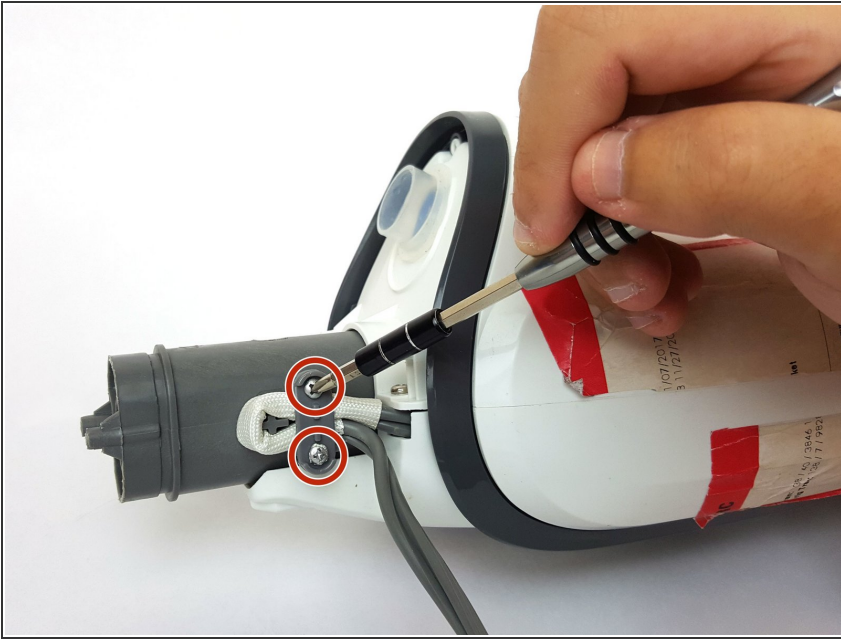
- Remove the three 12.0 mm Philips head #2 screws connected to the dark grey plastic trim.

Step 8



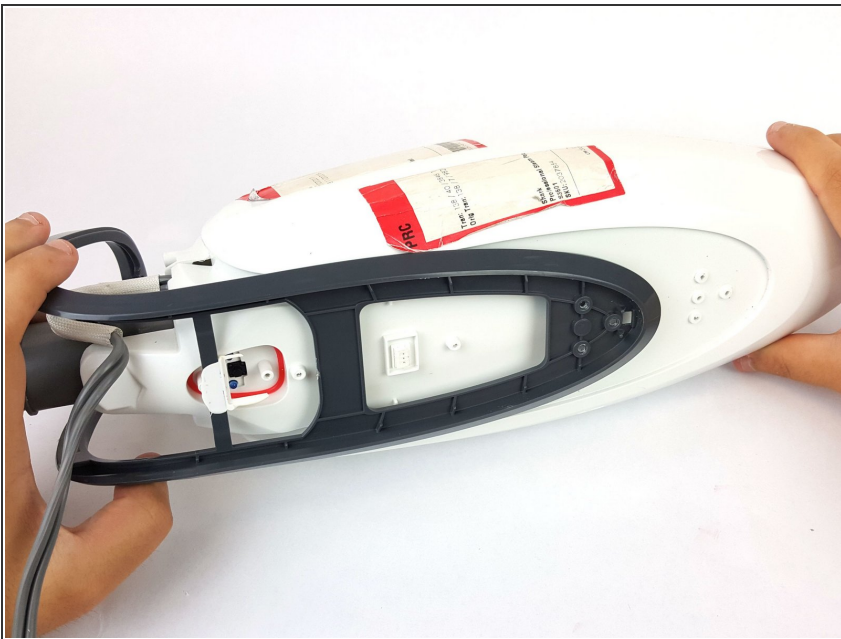
- Remove the four 16.0 mm T10 Torx screws located on the back of the mop.

Step 9



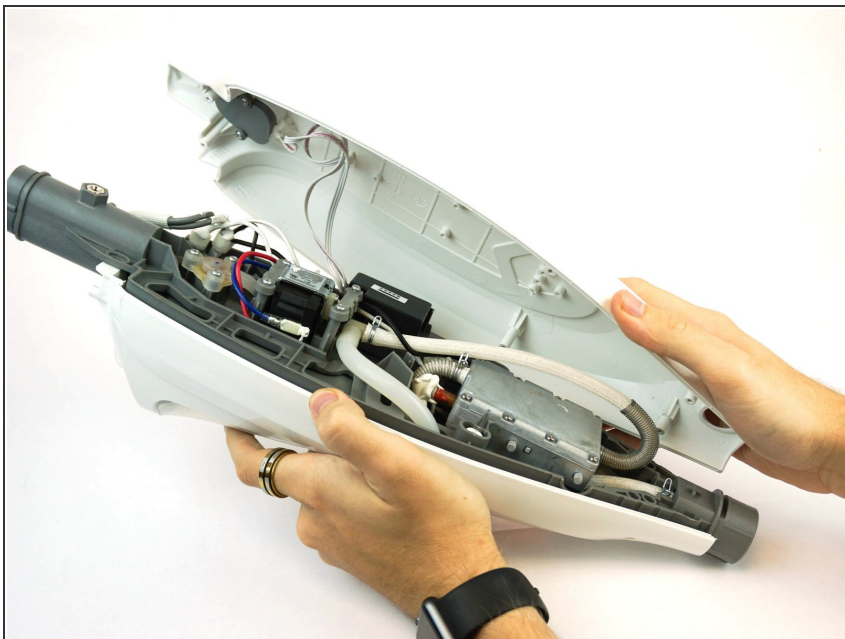
- Remove the two 12.0 mm Phillips head #2 screws that hold the power cord to the device.

Step 10



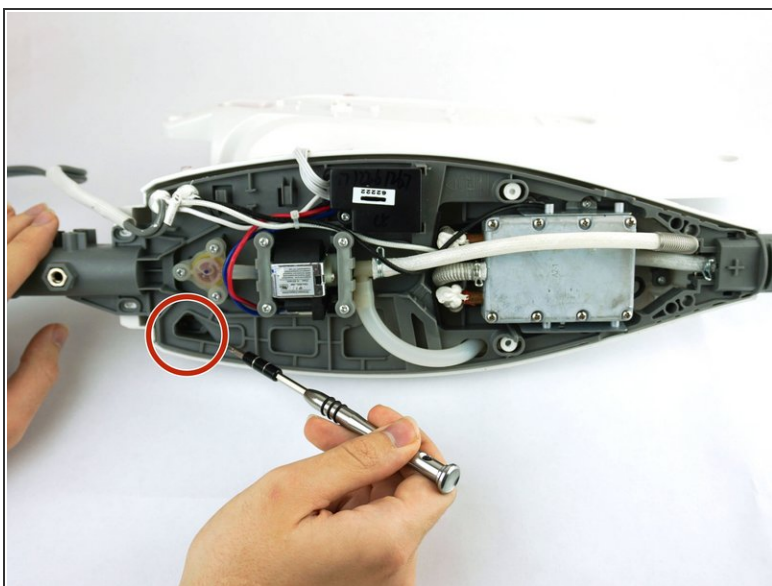
- Pop off the dark grey plastic trim cover.

Step 11



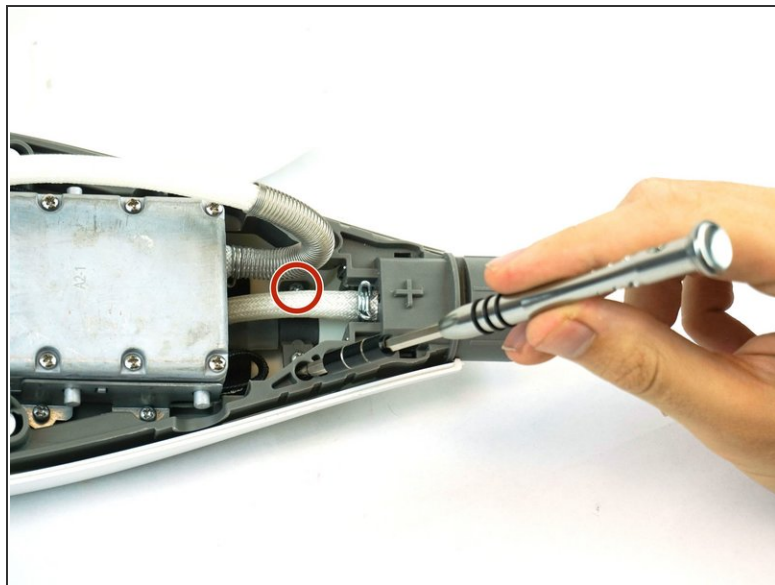
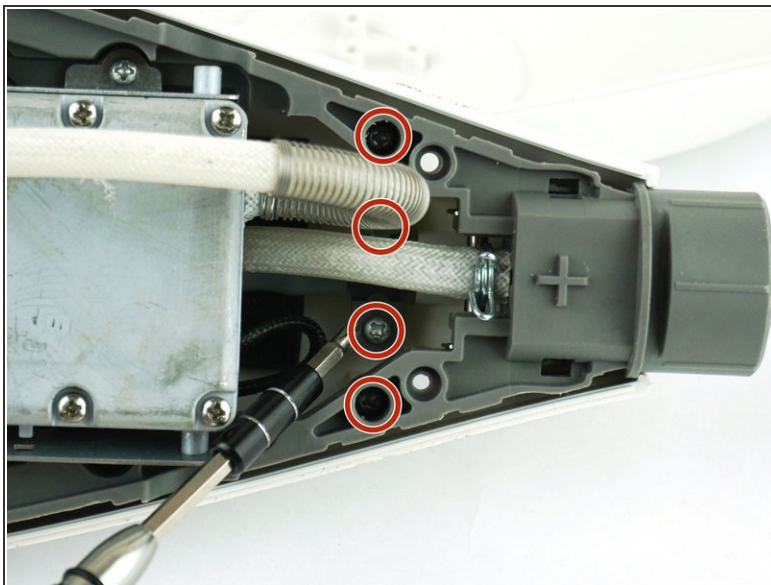
- Pop open the white plastic mop body by pulling apart from the front and back side.

Step 12 — Water Tank



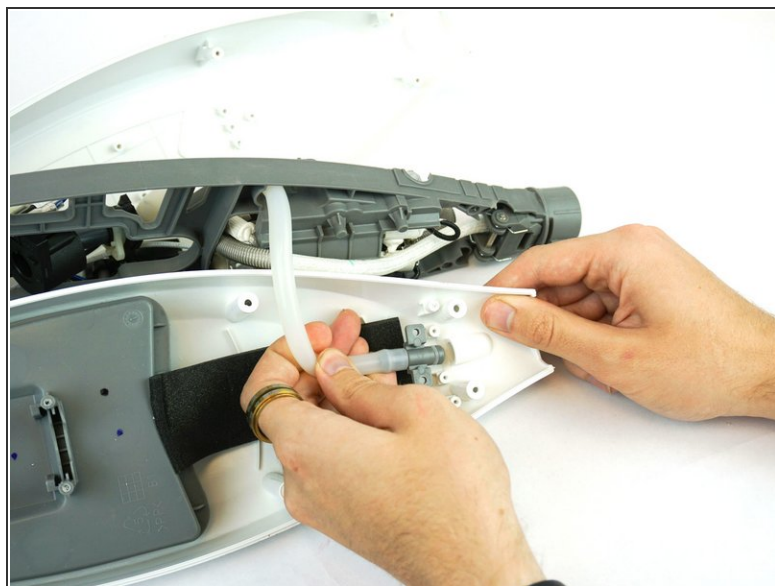
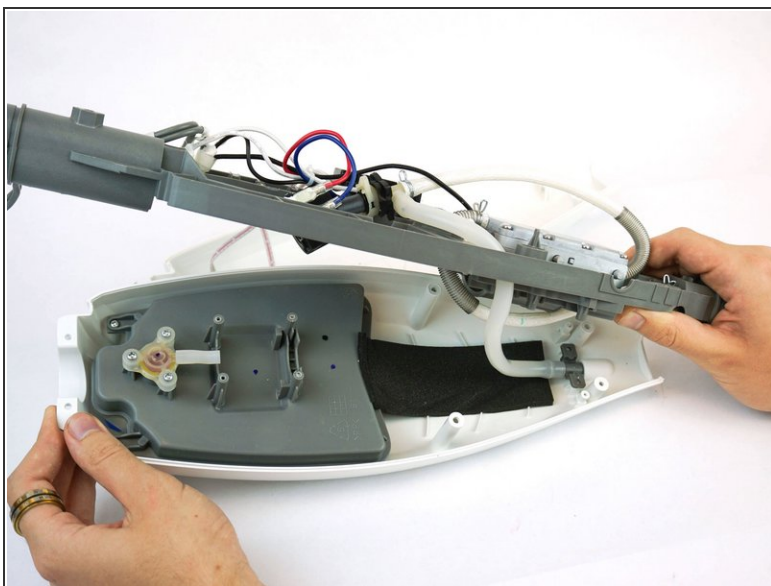
- Remove the top left 12.0 mm Phillips head #2 screw from inside body.

Step 13



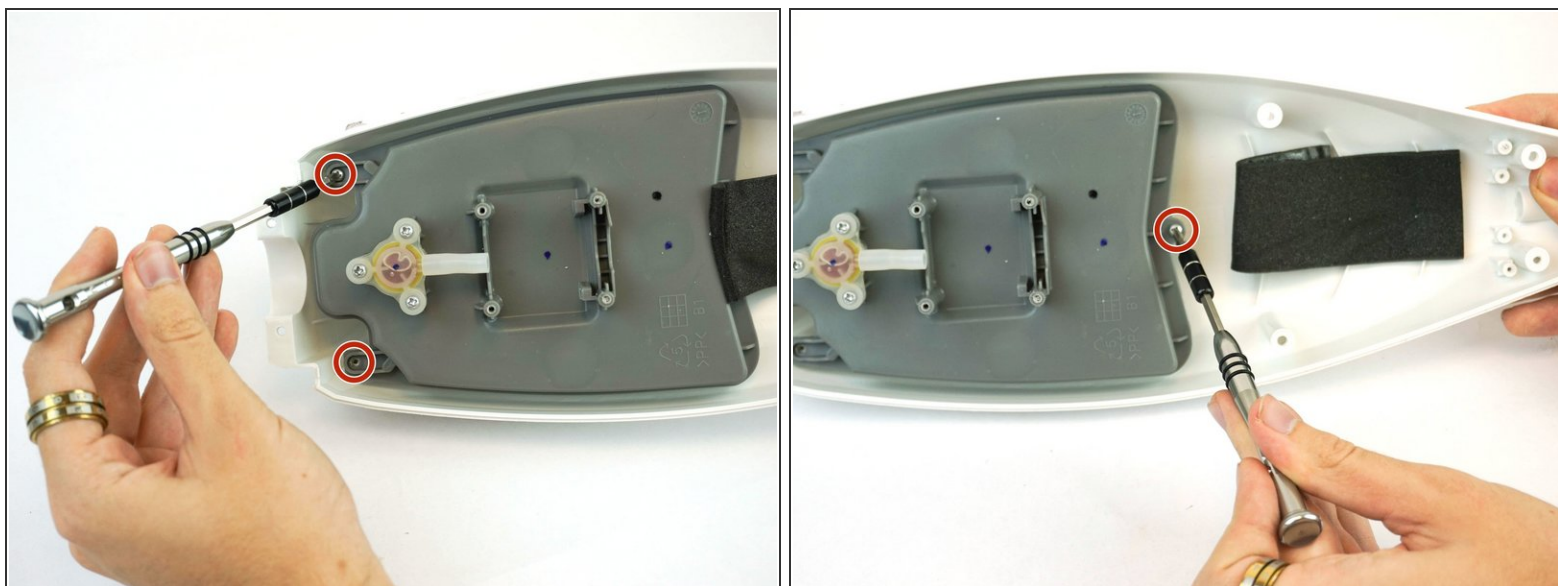
- Remove four 12.0 mm Phillips head #2 screws from the inside of the mop body.

Step 14



- Pull apart the bottom of the mop body from the dark grey connector.
- Disconnect the tube from the bottom

Step 15



- Remove two 12.0 mm Phillips head #2 screws on the top and then pull back the black foam to reveal and remove the third 12.0 mm Phillips head #2 screw.

Step 16



- Pull apart the mop body from the water tank to separate.

To reassemble your device, follow these instructions in reverse order.

This document was generated on 2020-11-28 06:41:26 AM (MST).

