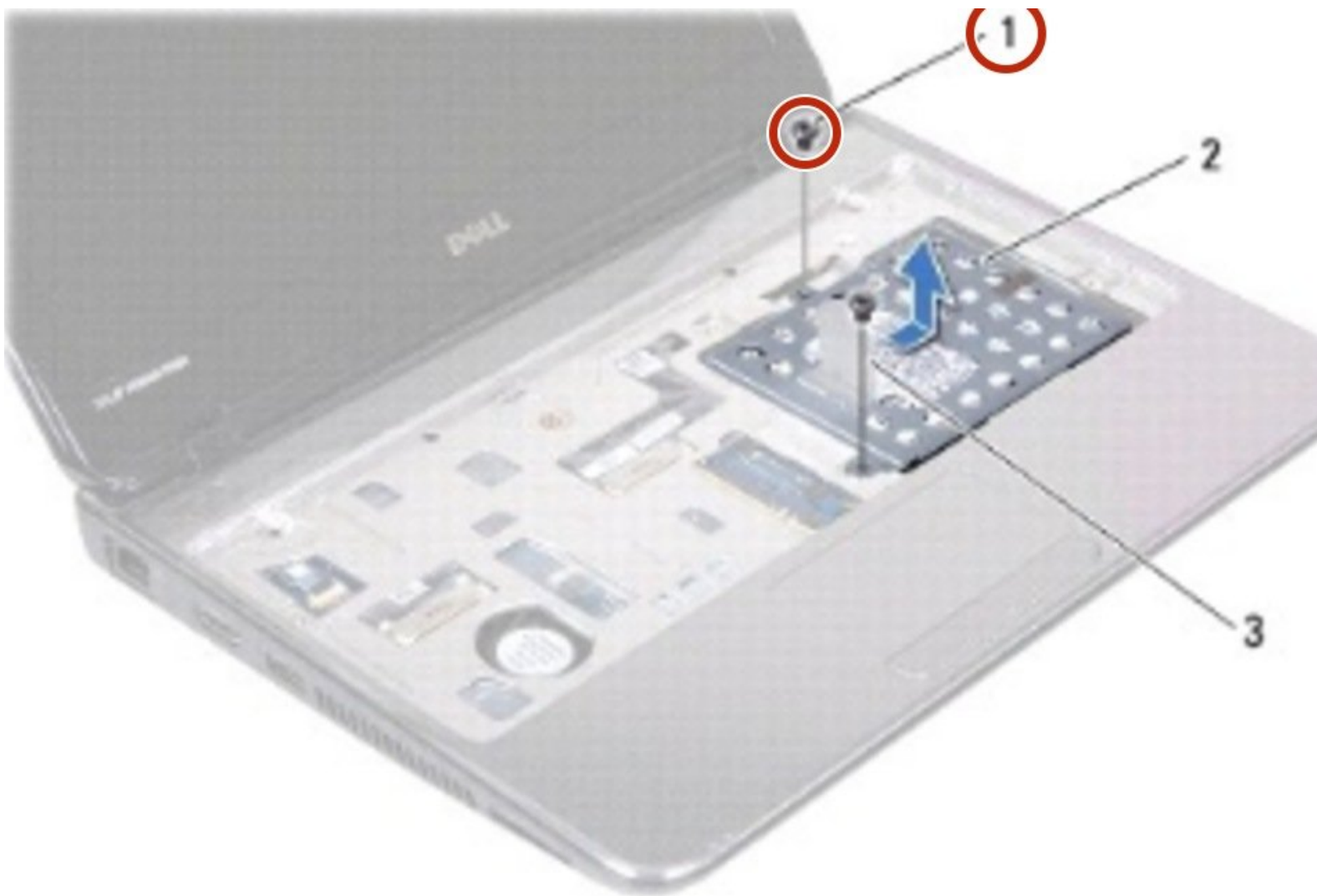




Dell Inspiron 1122 M102z Hard Drive Replacement

Written By: Terrence15



INTRODUCTION

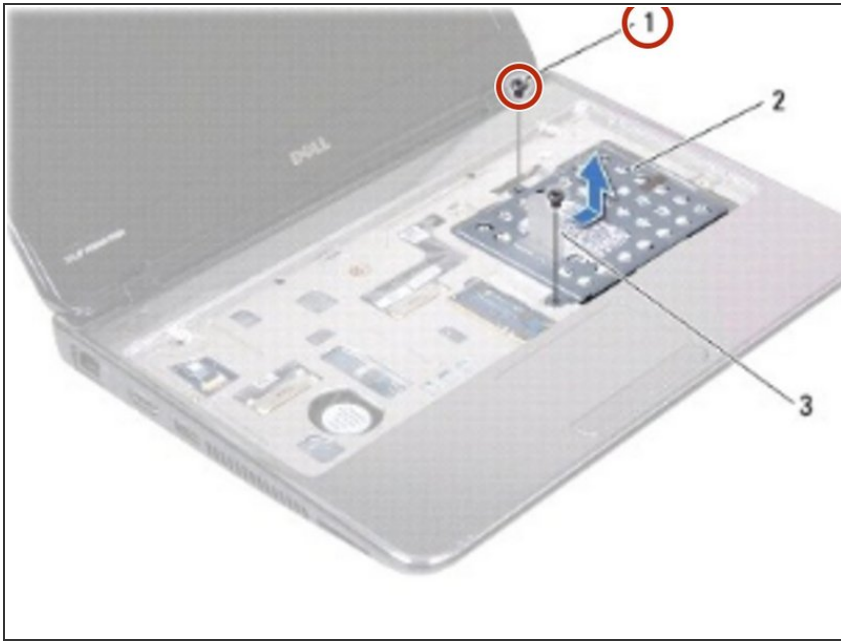
In this guide, we will show you how to remove and replace the Hard Drive.



TOOLS:

- [Essential Electronics Toolkit](#) (1)
-

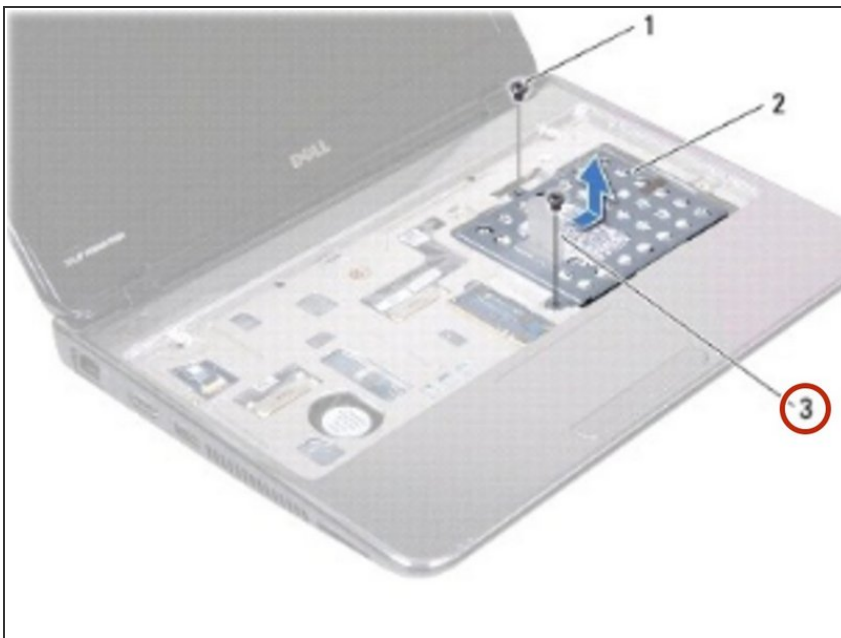
Step 1 — Remove the Screws



⚠ Follow the instructions in [Before You Begin](#).

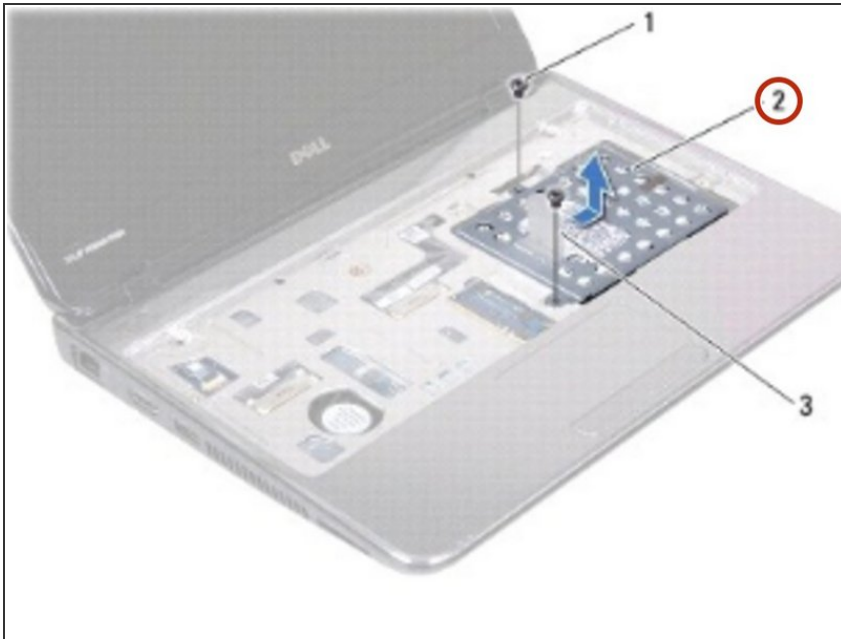
- Remove the two screws that secure the hard-drive assembly to the computer base.

Step 2 — Disconnecting the Hard Drive



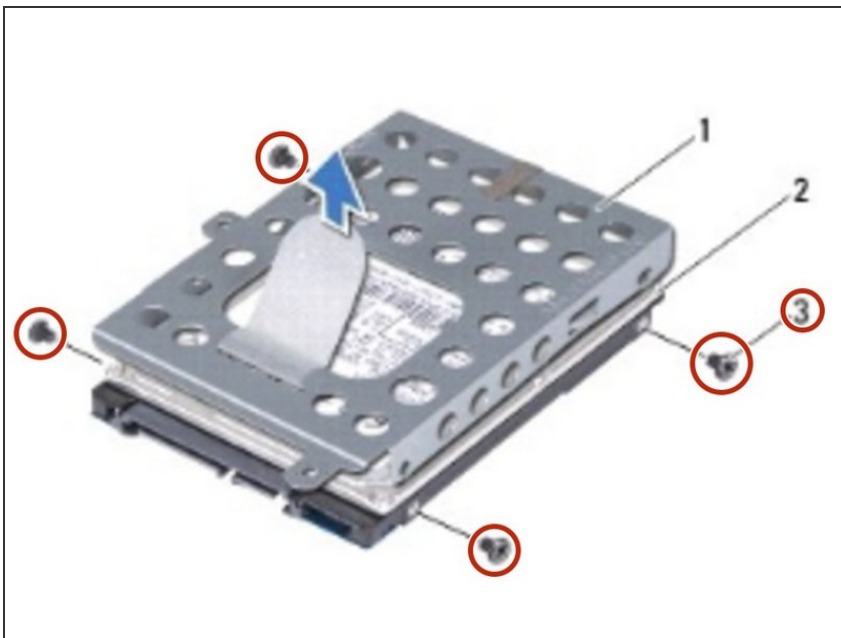
- Using the pull-tab, slide the hard-drive assembly to the side to disconnect it from the connector on the system board.

Step 3 — Lifting the Hard-Drive Assembly



- Lift the hard-drive assembly out of the computer base.

Step 4 — Remove the Screws



- Remove the four screws that secure the hard-drive bracket to the hard drive.

Step 5 — Lifting the Hard-Drive Bracket



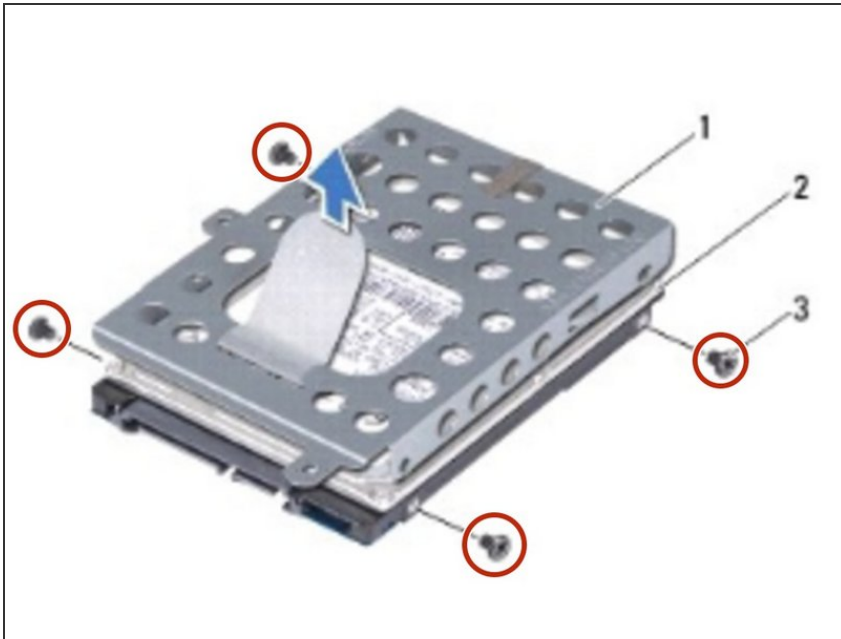
- Lift the hard-drive bracket off the hard drive.

Step 6 — Placing the Hard Drive



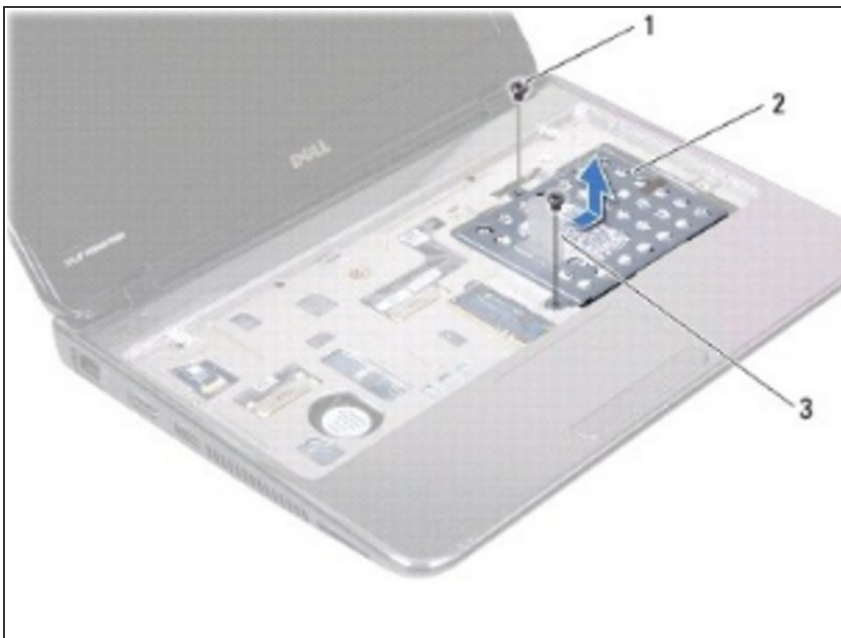
- Place the **NEW** hard drive in the hard-drive bracket.

Step 7 — Replace the Screws



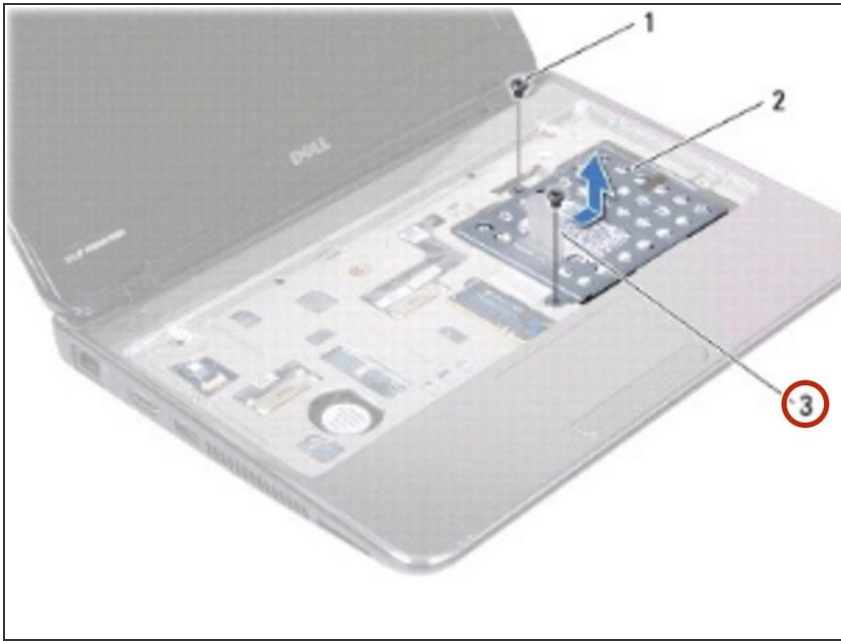
- Replace the four screws that secure the hard-drive bracket to the hard drive.

Step 8 — Placing the Hard-Drive Assembly



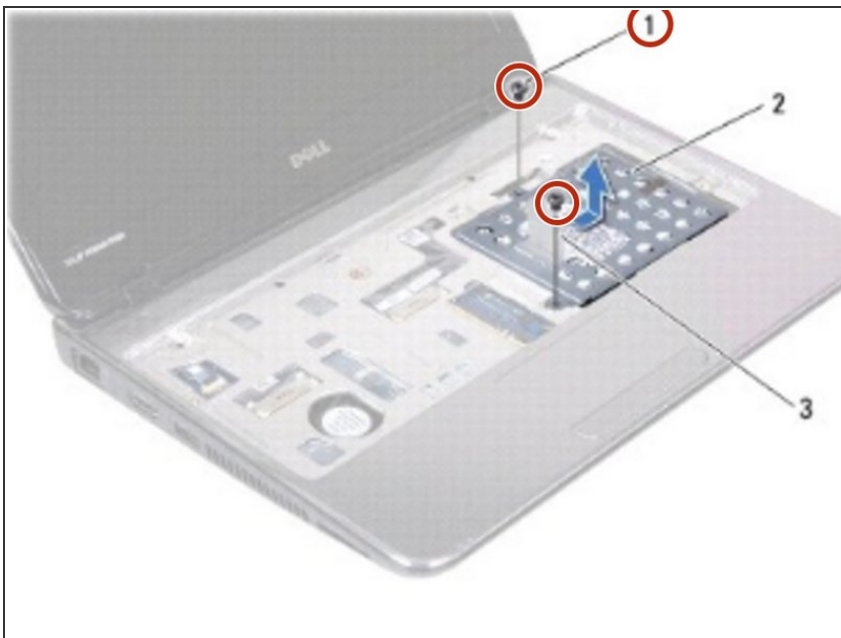
- Place the hard-drive assembly in the computer base.

Step 9 — Sliding the Hard-Drive Assembly



- Using the pull-tab, slide the hard-drive assembly into the connector on the system board.

Step 10 — Replace the Screws



- Replace the two screws that secure the hard-drive assembly to the computer base.

To reassemble your device, follow these instructions in reverse order.