



# Razer Blackwidow Tournament Edition Chroma Spacebar Metal Bar Replacement

Written By: Jacob Hughes



---

## TOOLS:

Phillips #1 Screwdriver (1)

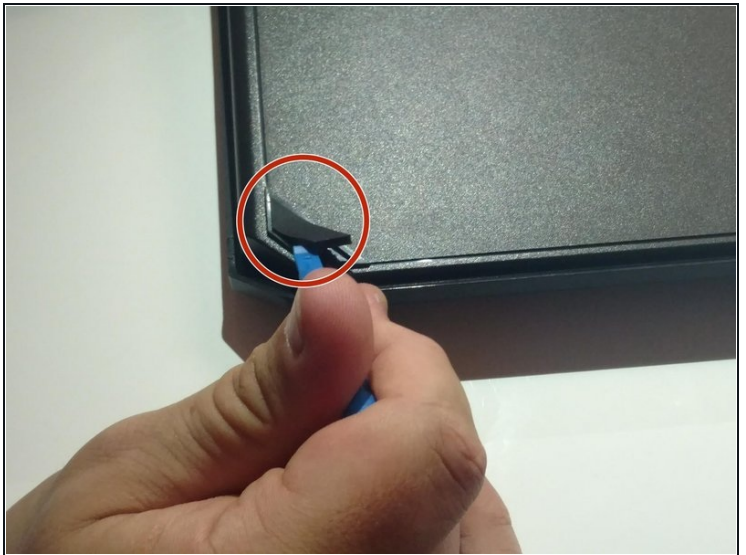
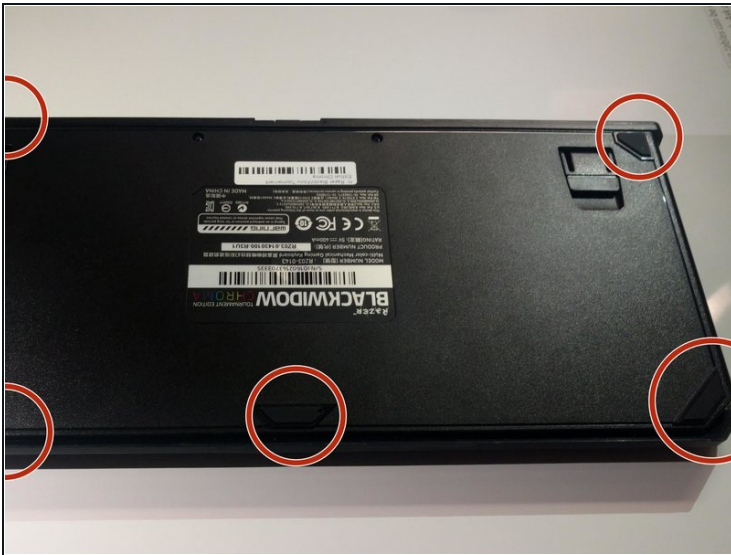
Phillips #1 Screwdriver (1)

iFixit Opening Tool (1)

Tweezers (1)

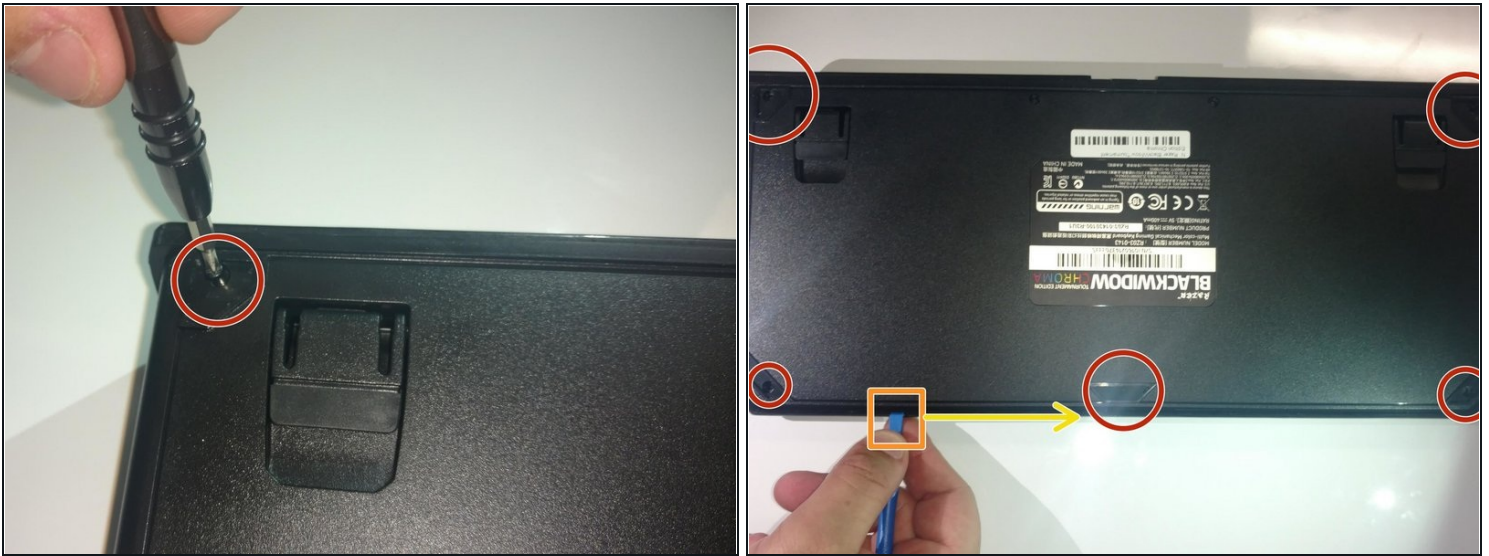
---

### Step 1 — Rubber Feet



- Turn the keyboard over so that it is lying flat on its face.
- Use the iFixit opening tool to pry the rubber feet off the keyboard.

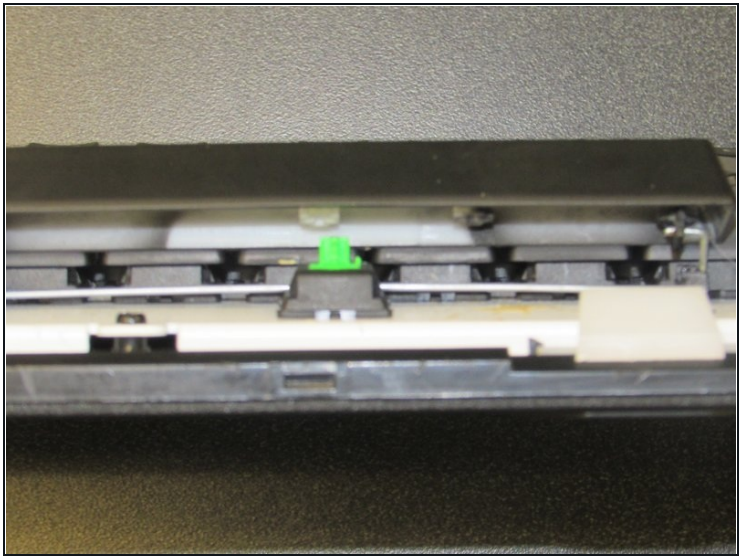
## Step 2 — Front Panel



- Use a Phillips #1 screwdriver to remove the six screws on the back of the keyboard.
- Use an opening tool as a wedge between the front and back panel to pry open the front panel.
  - ⚠ If the front and back panel won't separate, **DO NOT** use excessive force. This may result in damaging the keyboard.
  - Instead, slide the opening tool across the keyboard in between the front and back panel. Go around the edges of the keyboard until the panels disconnect.
- Flip the keyboard over so the keys are facing up.
- Grabbing the left and right lips of the front panel, lift both ends up, removing the front panel.



### Step 3 — Spacebar Metal Bar



- Pinch the top and bottom of the key of the metal bar that you wish to replace and gently lift.
- Tilt the key upwards so that you may see underneath it.

### Step 4



- Using [tweezers](#) unfasten the metal bar from the key both places that they are connected.
- Using tweezers unfasten the metal bar from the keyboard itself both places that they are connected.

---

To reassemble your device, follow these instructions in reverse order.