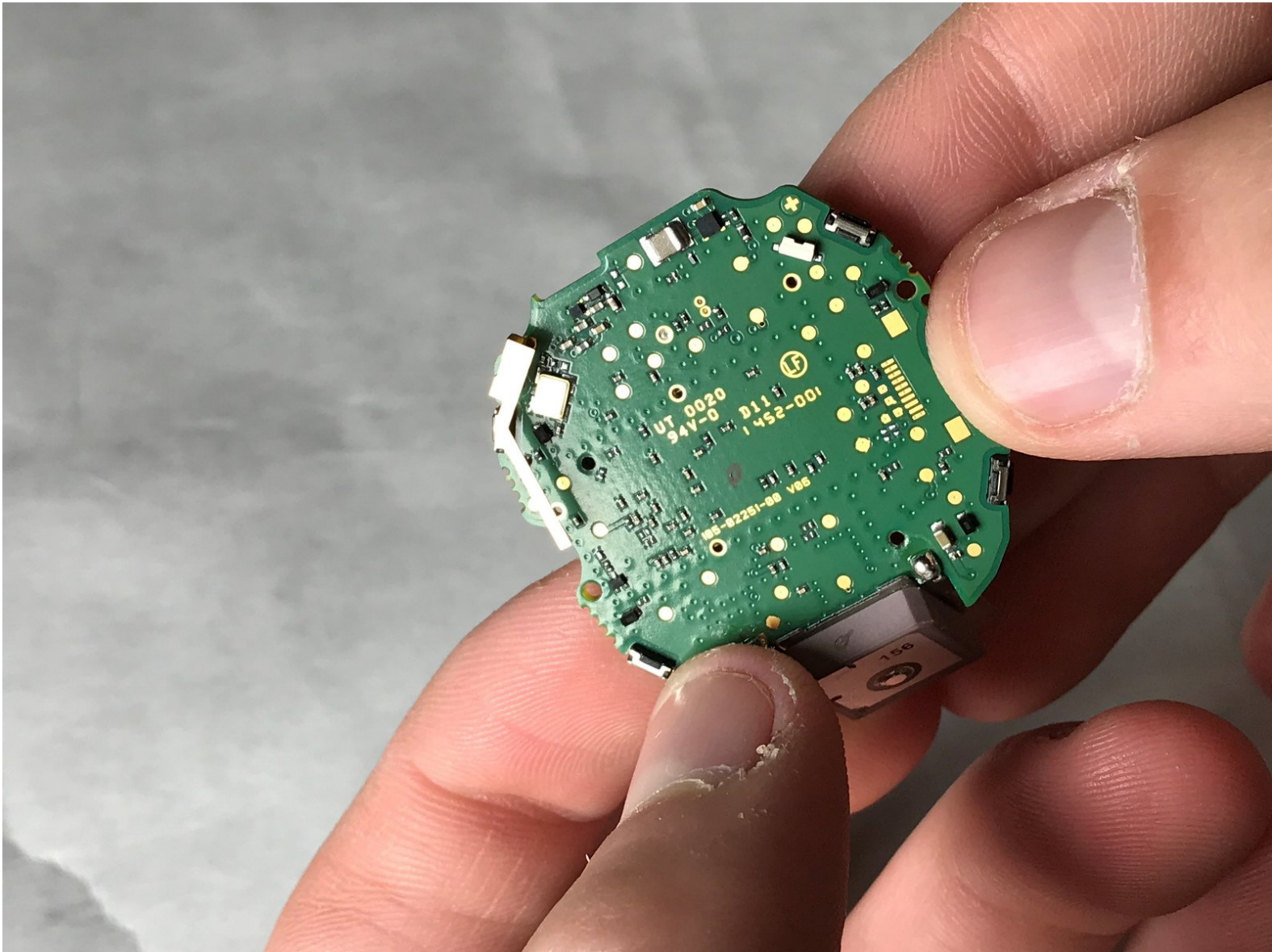




Garmin Approach S2 Motherboard Replacement

This guide will enable the user to replace the motherboard on their golf watch.

Written By: Evan Miller



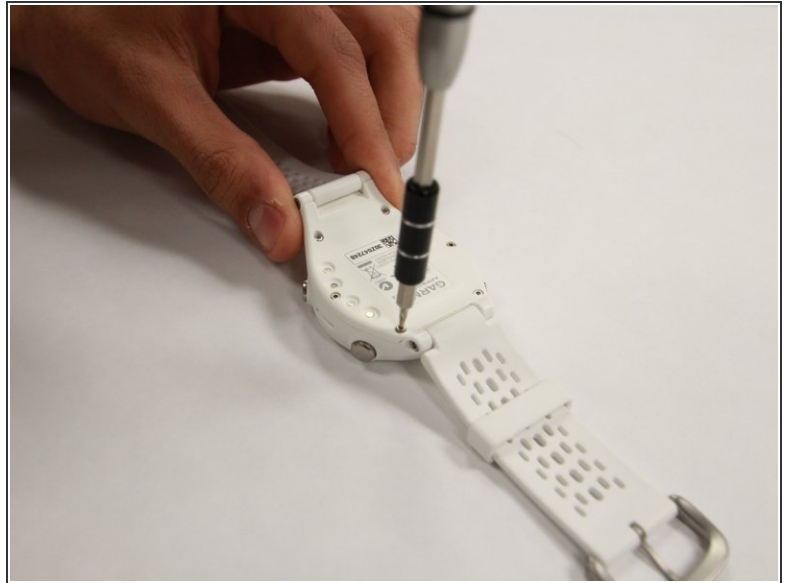
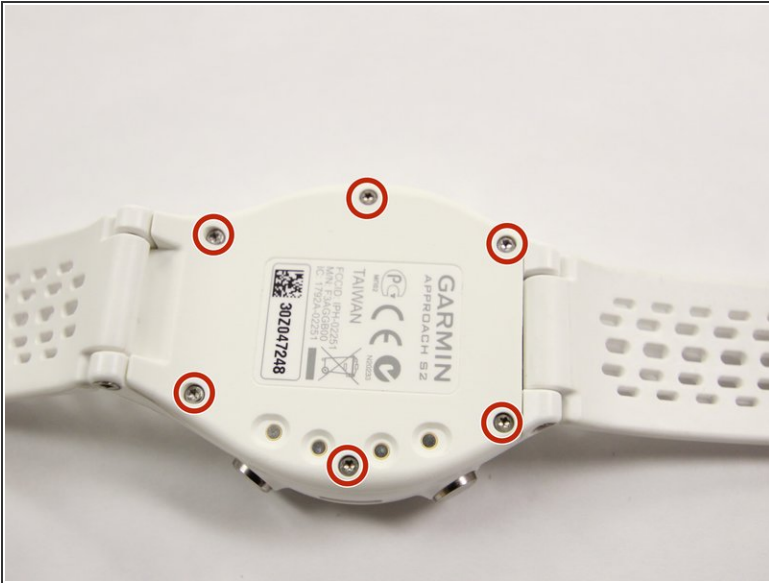
INTRODUCTION

Be very careful when handling connector wires, as they are incredibly easily broken. This guide is unique only in removing the circuit board from the screen.

TOOLS:

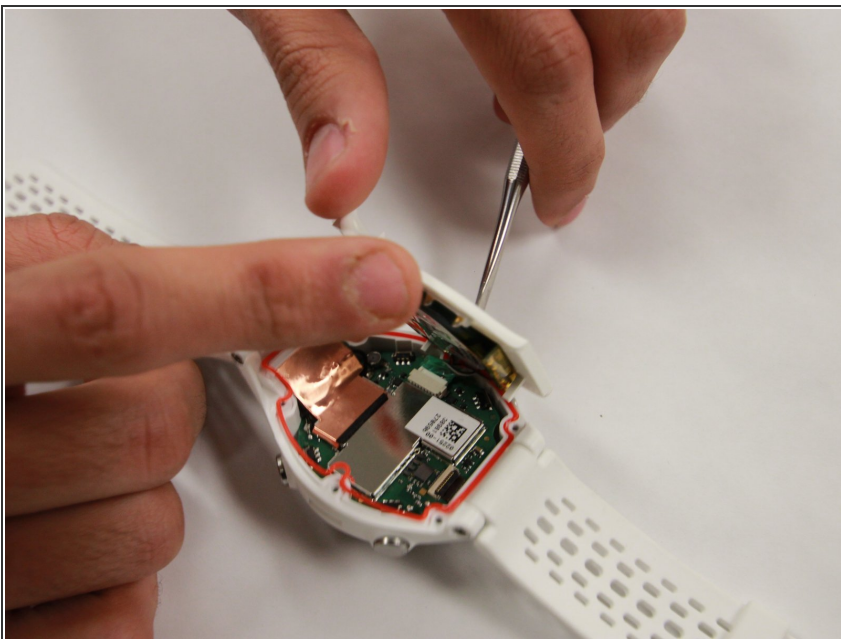
- [T5 Torx Screwdriver](#) (1)
 - [Metal Spudger](#) (1)
-

Step 1 — Back Cover



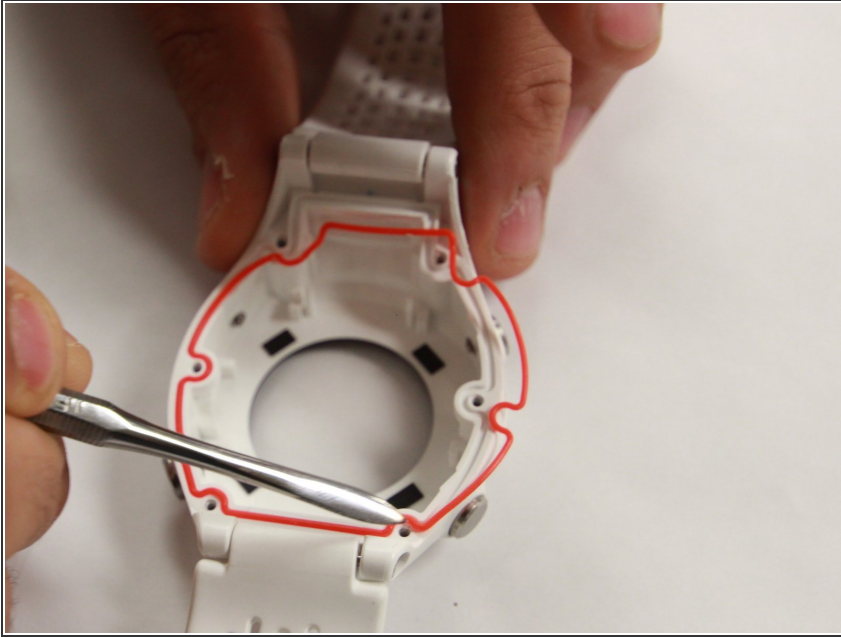
- Remove the six T5 Torx 6.32mm screws securing the back cover to the watch.

Step 2



- Remove the back cover carefully.
- ⓘ Even after the screws have been removed, the back cover can still be quite difficult to take off. Moderate to extensive prying may be required. Be gentle, but *firm*.

Step 3 — Water Proof Gasket



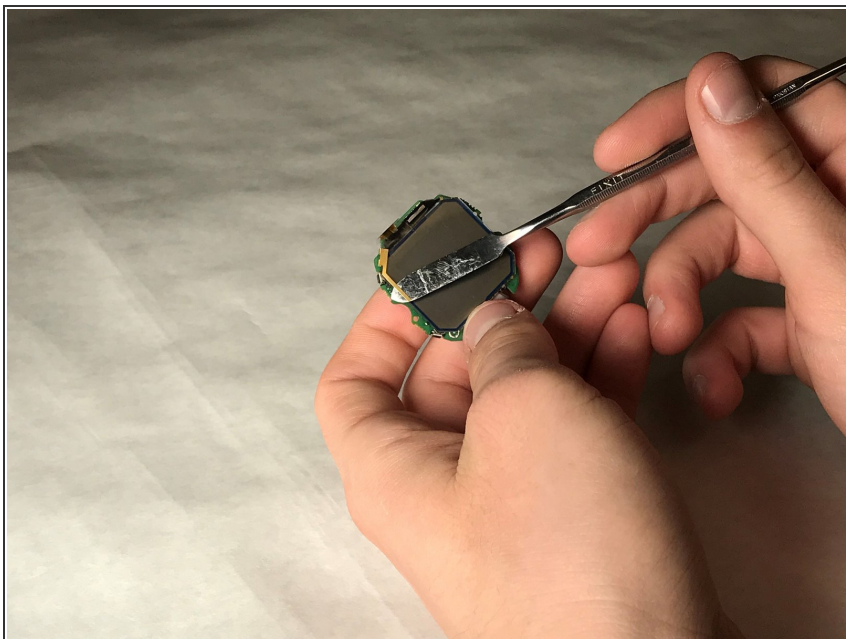
- Remove the orange gasket.

Step 4 — Screen



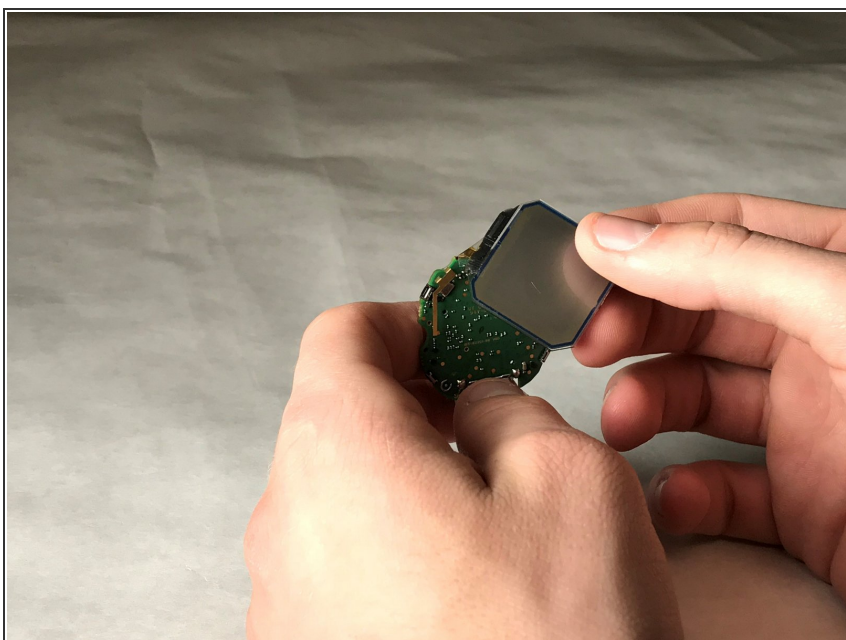
- Remove the screen and motherboard assembly from the case.

Step 5



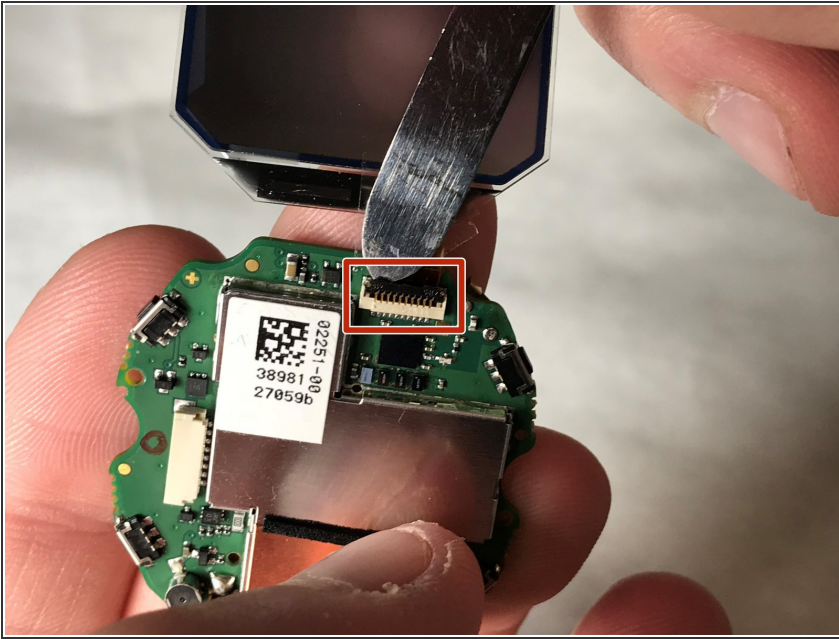
- Use a metal spudger to remove the golden retaining clip from the screen. There will be some adhesive to break.

Step 6



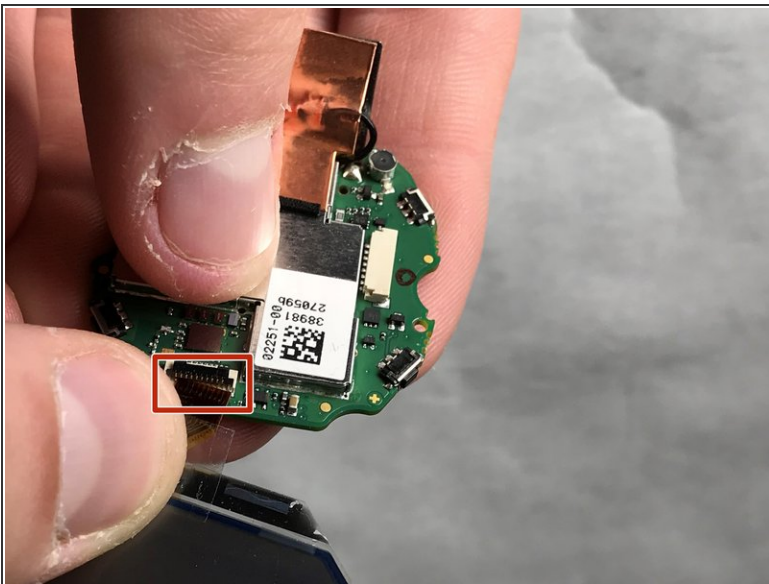
- Remove the screen from the golden metal clip.

Step 7



- Unhinge the black retaining hinge by prying it open with the metal spudger; Your fingernails will work as well.

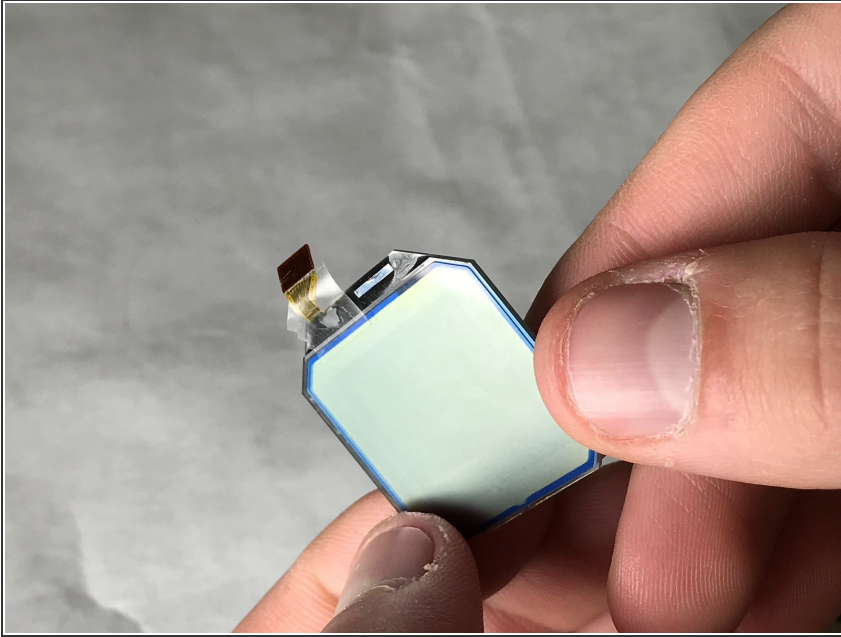
Step 8



- Remove the connector from the motherboard by pulling it free at the base.

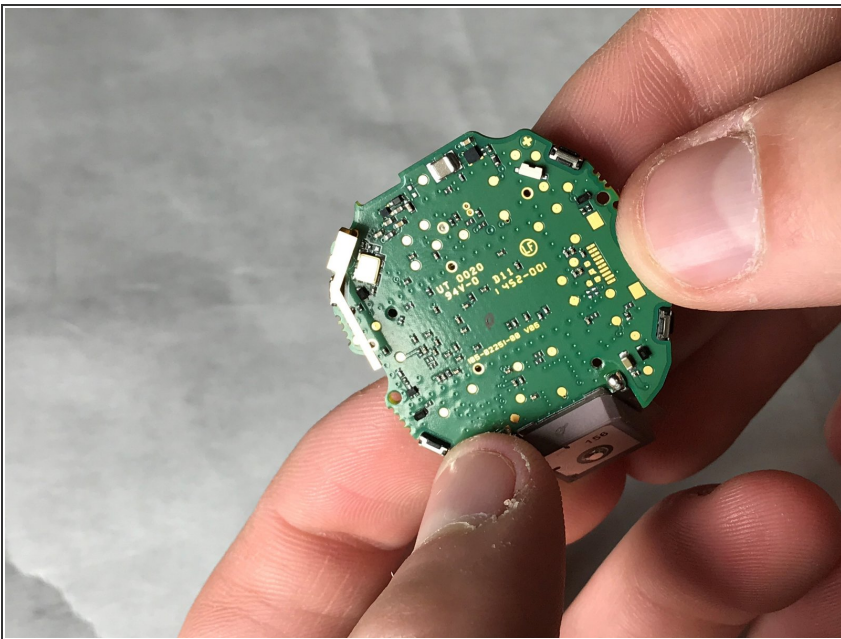
⚠ Make sure to pull from the base of the connector wire, as it is very easy to rip the wire from the screen.

Step 9



- Remove the screen from the motherboard.
- ⓘ Notice our tape retaining the connector to the screen. This is so easy to rip!

Step 10 — Motherboard



- Remove the motherboard from the screen.

To reassemble your device, follow these instructions in reverse order.