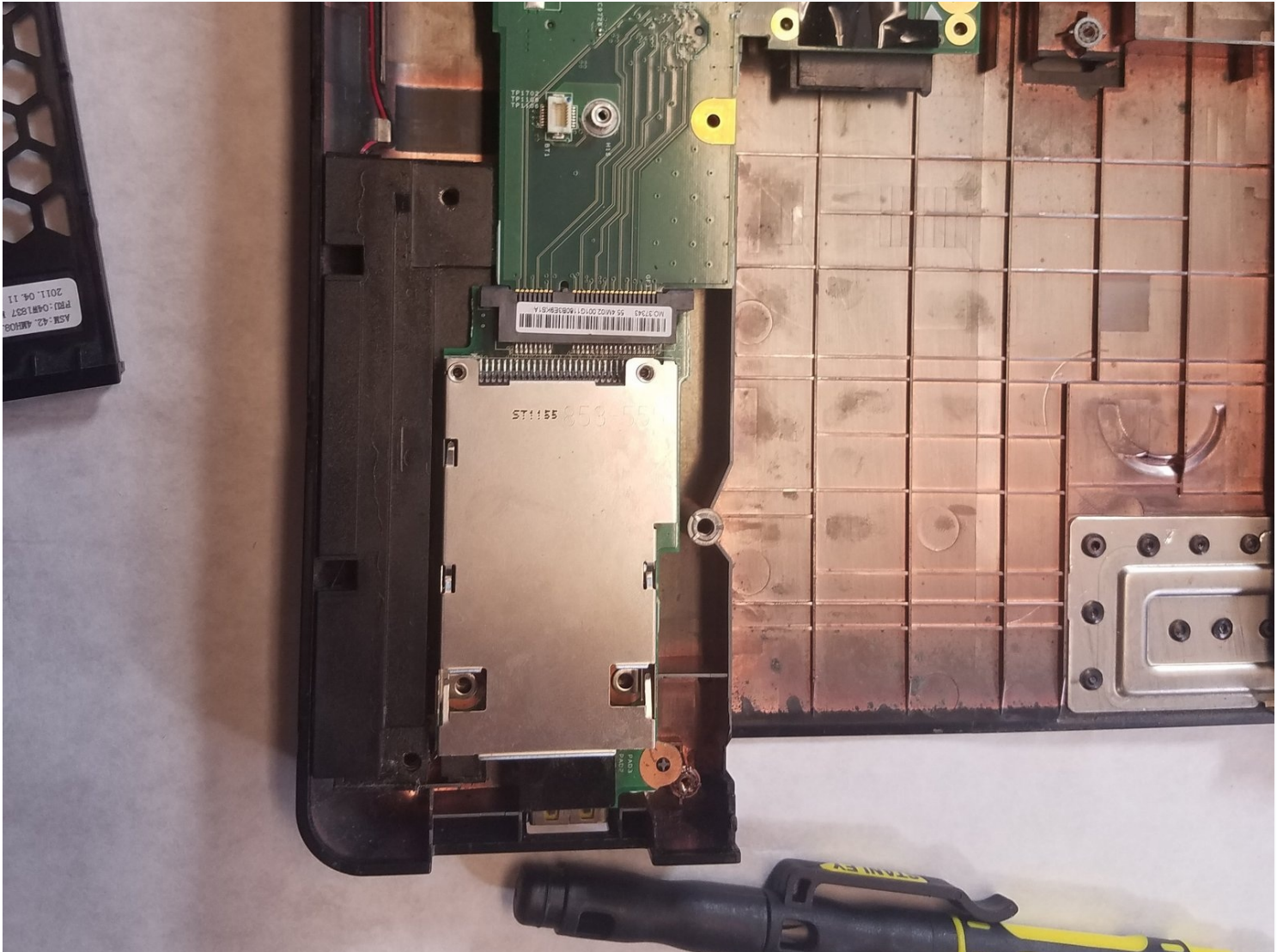




# Lenovo ThinkPad Edge E520 USB Drive Replacement

This guide assists you in replacing the USB...

Written By: Holly Dunham



# INTRODUCTION

This guide assists you in replacing the USB Drive for the Lenovo Thinkpad Edge E520.

## TOOLS:

Spudger (1)

Phillips #0 Screwdriver (1)

## Step 1 — Back Plate



- Flip over the laptop and position it with the battery being furthest away from you.
  - Remove the four screws on the edges of the T-Shaped plate with a Phillips #0 screwdriver.
  - Remove the T-Shaped plate from the back of the computer. It should come off easily if all four aforementioned screws are removed.
- ① Screw length 6.35 mm, head 3.175 mm

## Step 2 — Battery



⚠ Power off and unplug the computer before the start of these steps.

- Close the laptop lid.

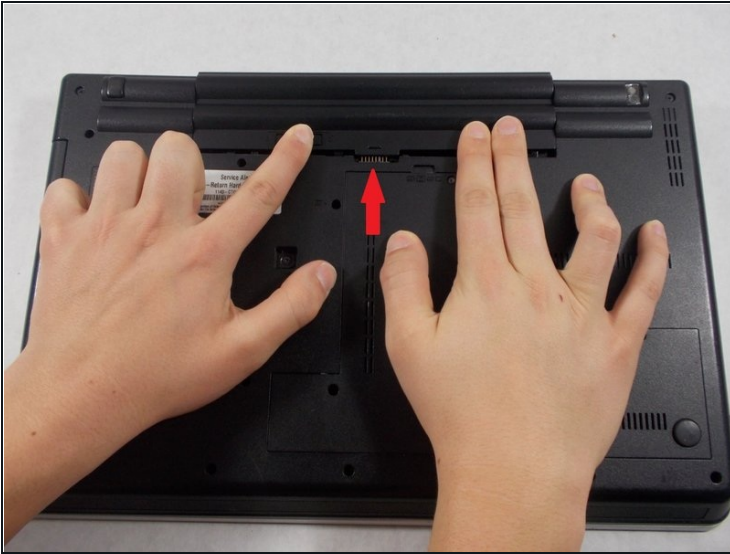
## Step 3



- Flip the computer so that the back is facing upwards.
- Locate the switch used to release the battery.
- ① The switch should be located towards the hinge of the laptop near the battery pack and have a lock icon associated with it.

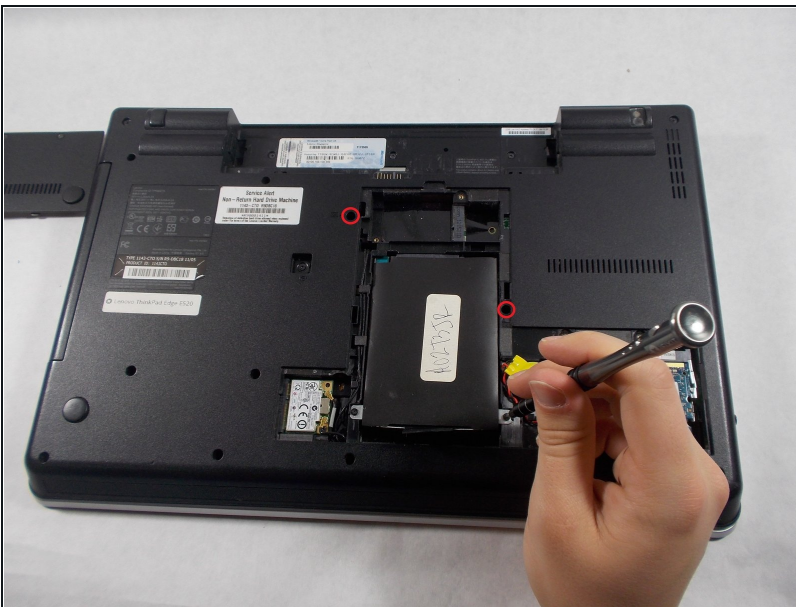


## Step 4



- Slide the switch towards the unlocked lock icon.
- While holding it in the unlocked position, slide the battery towards the hinge.
- Fully separate the battery pack from the back of the laptop.

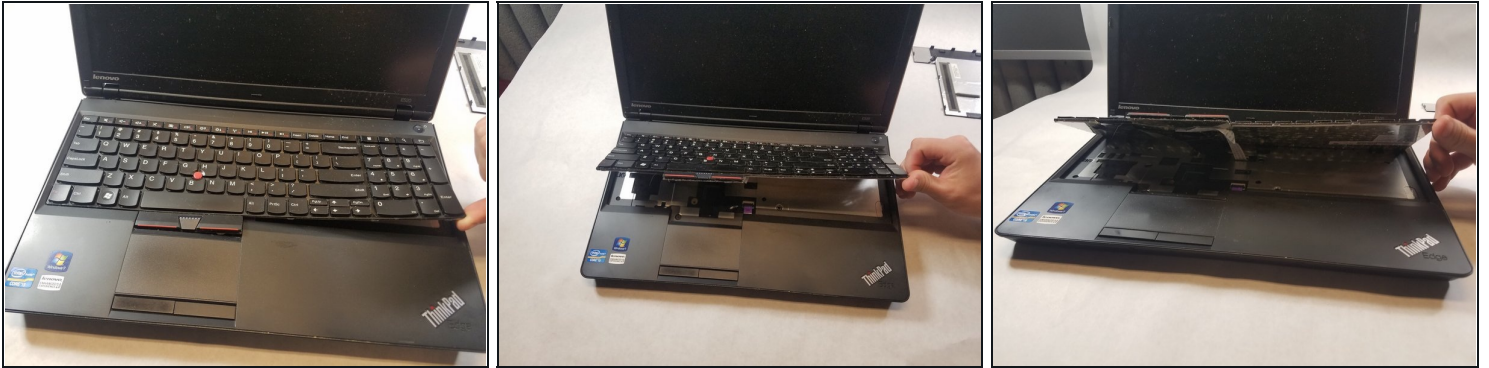
## Step 5 — Keyboard



⚠ Remove the battery from the back of the device

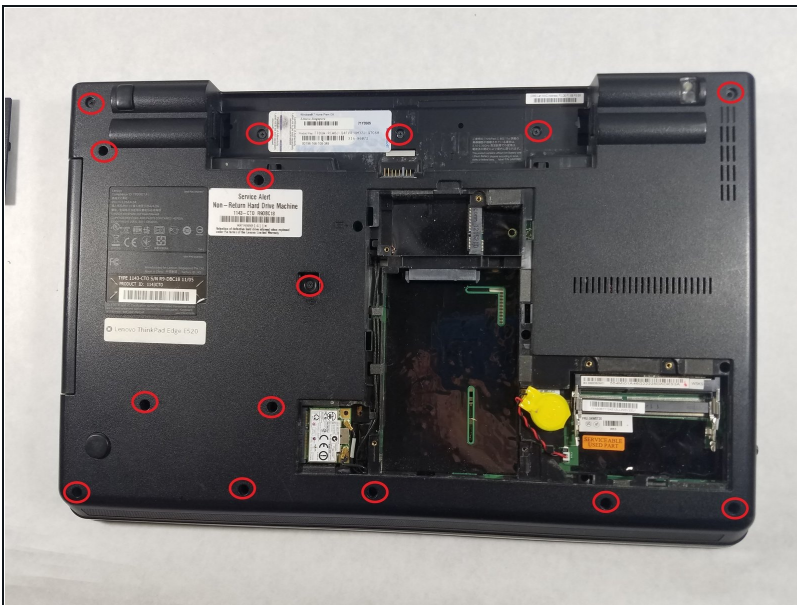
- Unscrew the two 3.175 mm diameter and 6.35 mm length screws with keyboard symbols pointing at them using a Phillips head screwdriver.

## Step 6



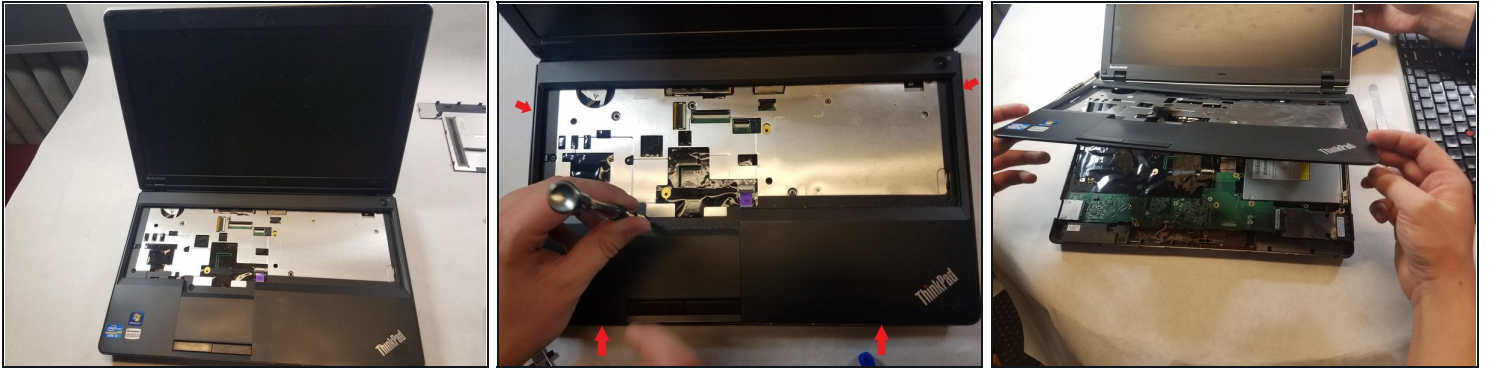
- Turn the laptop back over so that the keyboard is facing you.
- Use your hands to separate the keyboard from the laptop

## Step 7 — Front Compartment Case



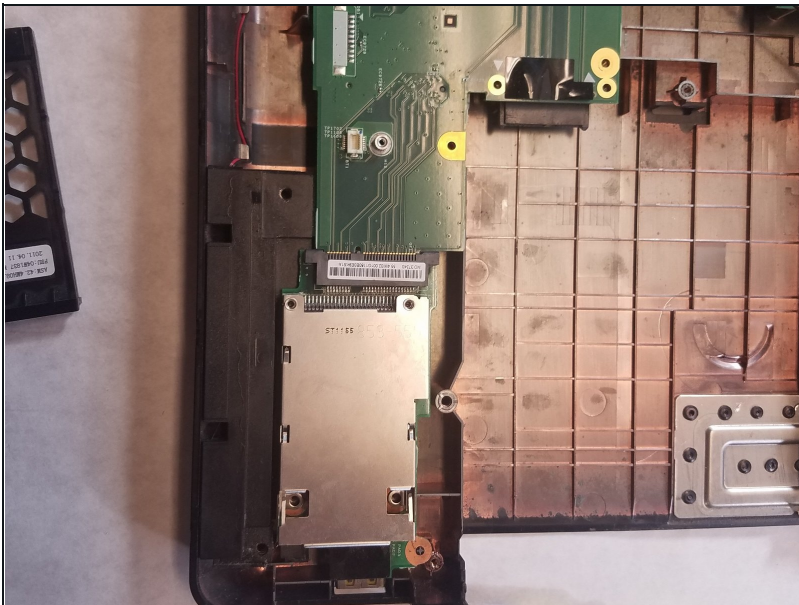
- Remove all remaining screws on the back of the device.
- Screw length 6.35 mm, head 3.175 mm Screws behind battery length 3.175 mm, head 3.175 mm

## Step 8



- Flip device back over and open the screen.
- Insert the prying tool on one edge of the case and follow along all four edges until the case frees up.
- Remove the case.

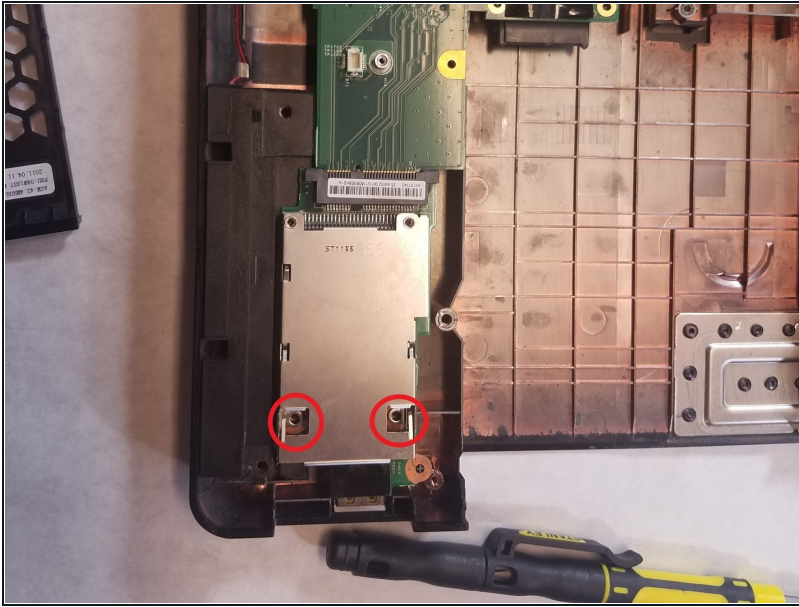
## Step 9 — USB Drive



- There is a silver rectangle next to the CD drive.
- Remove the black tray from the silver rectangular box.



## Step 10



- There are two screws that are 1/8 inch under the square cutouts in the silver rectangular box.
- Unscrew the two screws with a Phillips head screwdriver.

## Step 11



- Lift the silver rectangular box up and slide outwards to remove USB Drive.

To reassemble your device, follow these instructions in reverse order.