



Lenovo ThinkPad Edge E520 CD Disk Drive Replacement

This guide will help to replace the CD disk...

Written By: Andrew Martin



INTRODUCTION

This guide will help to replace the CD disk drive from the Lenovo Thinkpad Edge E520 CD Disk Drive.


TOOLS:

Phillips #0 Screwdriver (1)

Spudger (1)

Step 1 — Battery



 Power off and unplug the computer before the start of these steps.

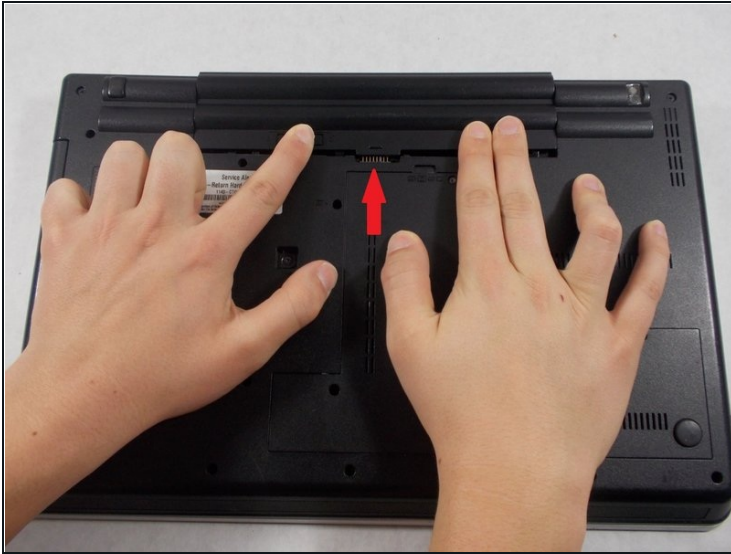
- Close the laptop lid.

Step 2



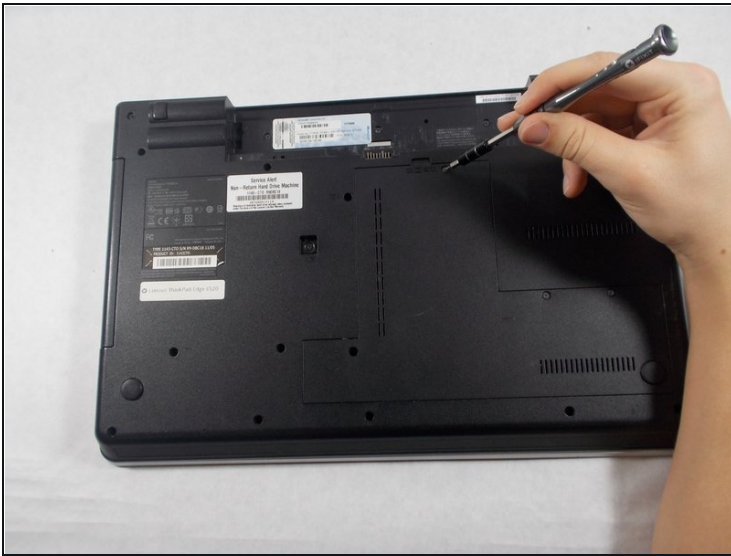
- Flip the computer so that the back is facing upwards.
- Locate the switch used to release the battery.
- ① The switch should be located towards the hinge of the laptop near the battery pack and have a lock icon associated with it.

Step 3



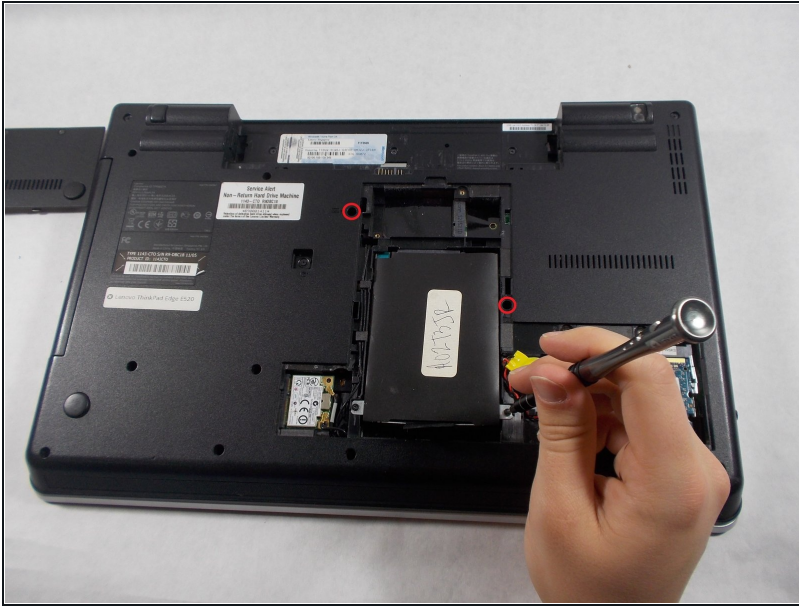
- Slide the switch towards the unlocked lock icon.
- While holding it in the unlocked position, slide the battery towards the hinge.
- Fully separate the battery pack from the back of the laptop.

Step 4 — Back Plate



- Flip over the laptop and position it with the battery being furthest away from you.
 - Remove the four screws on the edges of the T-Shaped plate with a Phillips #0 screwdriver.
 - Remove the T-Shaped plate from the back of the computer. It should come off easily if all four aforementioned screws are removed.
- ① Screw length 6.35 mm, head 3.175 mm

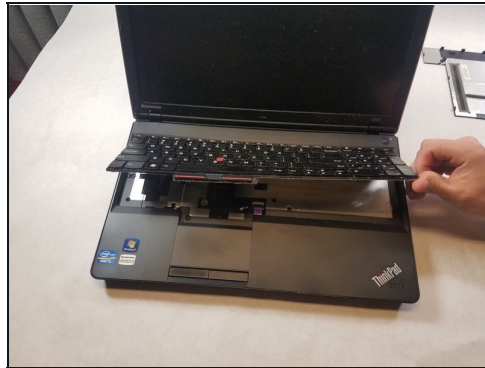
Step 5 — Keyboard



⚠ Remove the battery from the back of the device

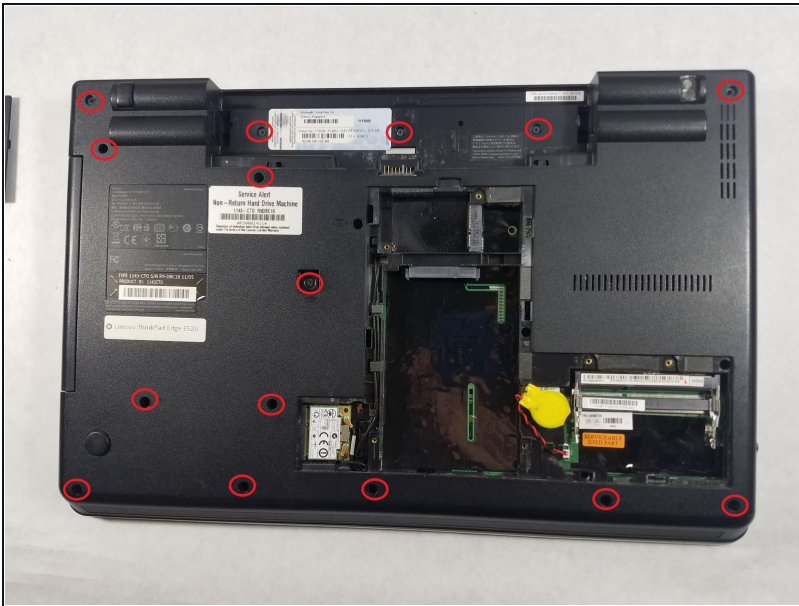
- Unscrew the two 3.175 mm diameter and 6.35 mm length screws with keyboard symbols pointing at them using a Phillips head screwdriver.

Step 6



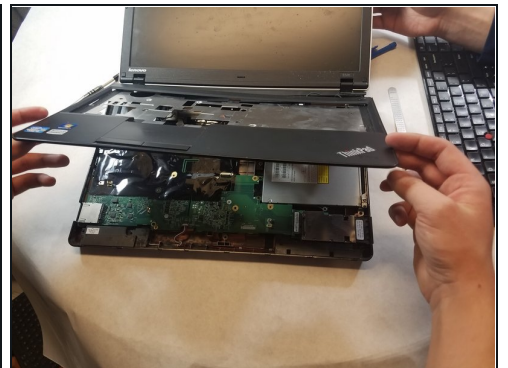
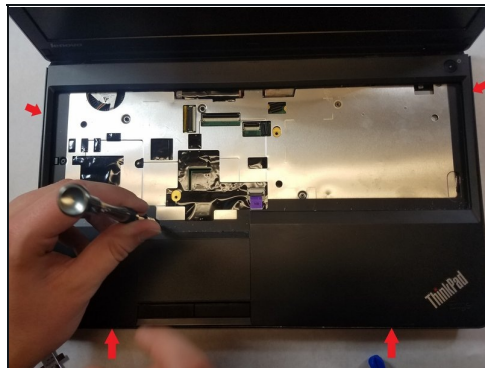
- Turn the laptop back over so that the keyboard is facing you.
- Use your hands to separate the keyboard from the laptop

Step 7 — Front Compartment Case



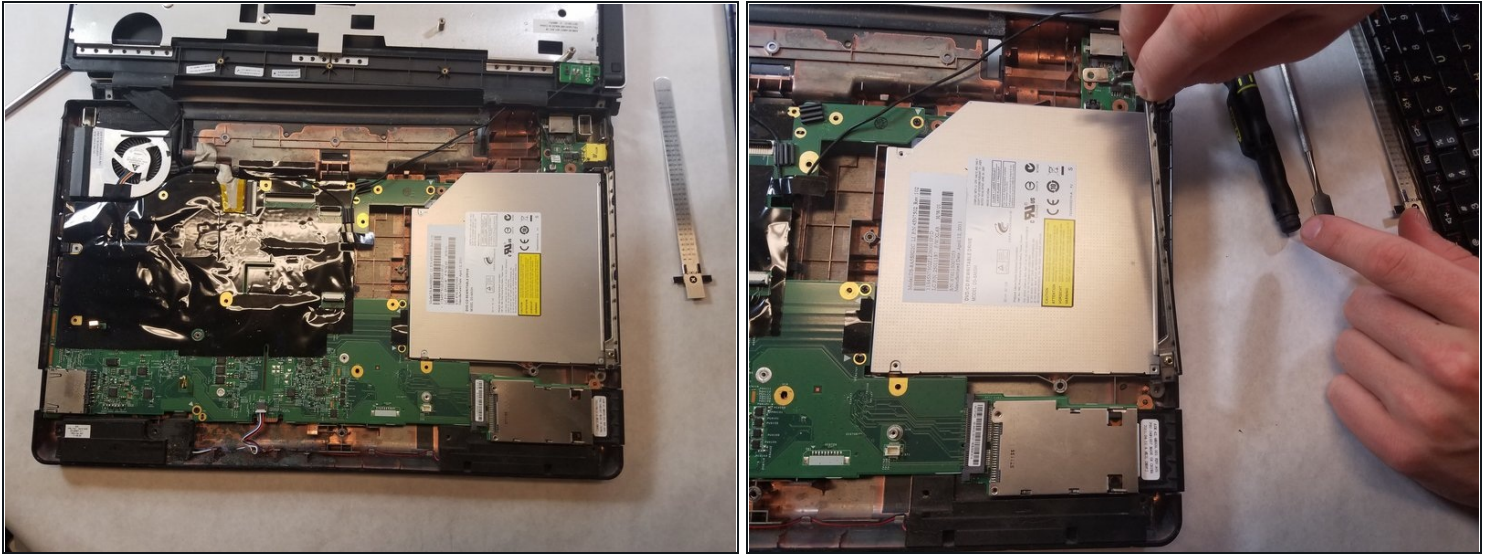
- Remove all remaining screws on the back of the device.
- Screw length 6.35 mm, head 3.175 mm Screws behind battery length 3.175 mm, head 3.175 mm

Step 8



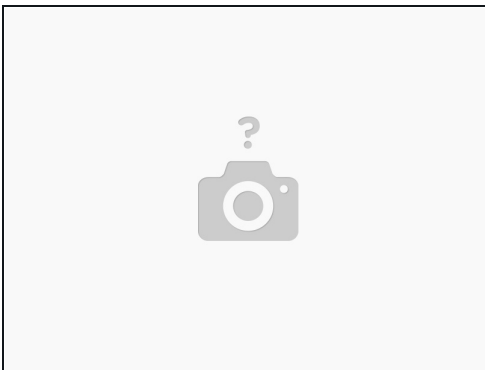
- Flip device back over and open the screen.
- Insert the prying tool on one edge of the case and follow along all four edges until the case frees up.
- Remove the case.

Step 9 — CD Disk Drive



- The silver block contains two screws.
- Unscrew the two screws to remove the clamp that holds the disk drive in place.
- Screw length 6.35 mm, head 3.175 mm

Step 10



- Remove the screws holding the disk drive in place and then slide outwards to remove
- Screw length 6.35 mm, head 3.175 mm

To reassemble your device, follow these instructions in reverse order.